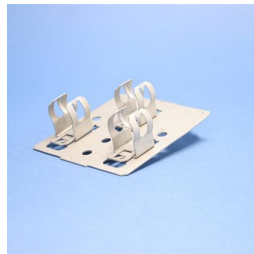
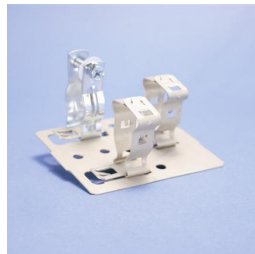
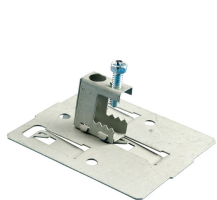
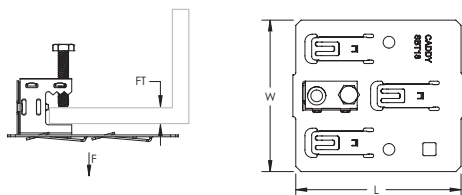


## SBT-BC Multiple Conduit Mounting Plate with Beam Clamp – SBT18BC



- Single point structure attachment and easy "snap-in" field assembly of up to three conduit clips
- No tools necessary for installation of clips
- Eliminates need for offset bending conduit
- Helps eliminate multiple beam clamps or strut assemblies



Part Number	SBT18BC
Material	Spring Steel
Finish	CADDY ARMOUR
Flange Thickness (FT)	1/2" Max
Length (L)	4.08"
Width (W)	3 5/8"
Static Load (F)	25 lb
Standard Packaging Quantity	50 pc
UPC	78285646703

Static load ratings are per tab.

### WARNING

Pentair products shall be installed and used only as indicated in Pentair's product instruction sheets and training materials. Instruction sheets are available at [erico.pentair.com](http://erico.pentair.com) and from your Pentair customer service representative. Improper installation, misuse, misapplication or other failure to completely follow Pentair's instructions and warnings may cause product malfunction, property damage, serious bodily injury and death and/or void your warranty.

© 2017 Pentair. All rights reserved.

Pentair, CADDY, CADWELD, CRITEC, ERICO, ERIFLEX, ERITECH and LENTON are owned by Pentair or its global affiliates.

All other trademarks are the property of their respective owners. Pentair reserves the right to change specifications without prior notice.

