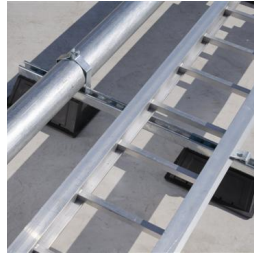
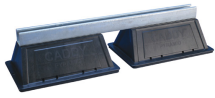
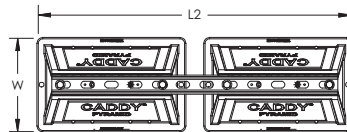
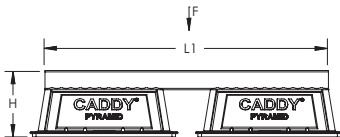


CADDY PYRAMID ST Bridge Assembly – PSB24A



- Ideal for supporting multiple pipe runs, cable tray and air handling units
- Foam bottom offers low abrasion interface for better roof membrane protection
- Compatible with roof surfaces including single ply, bituminous, metal and spray foam
- Provides superior load distribution, even with varying rooftop surfaces
- Ready to use out of the box, saving installation time and labor
- Multiple sizes and load ratings offer the ability to tailor the solution to the application
- Hot-dip galvanized and UV stabilized for long lasting performance
- Supports green building requirements; thermoplastic bases are made from recycled material and can contribute to earning LEED credits



Part Number	PSB24A
Material	Polyethylene Polypropylene Steel
Finish	Hot-Dip Galvanized
Temperature	-50 to 150 °F
Static Load Safety Factor	3:1
Length 1 (L1)	24"
Length 2 (L2)	26 1/2"
Height (H)	5.6"
Width (W)	8"
Surface Area	184 in ²
Unit Weight	5 lb
Static Load (F)	2,000 lb
Standard Packaging Quantity	2 pc
UPC	78285684315
EAN-13	8711893138962

Static loads are assumed to be uniformly distributed.

WARNING

Pentair products shall be installed and used only as indicated in Pentair's product instruction sheets and training materials. Instruction sheets are available at erico.pentair.com and from your Pentair customer service representative. Improper installation, misuse, misapplication or other failure to completely follow Pentair's instructions and warnings may cause product malfunction, property damage, serious bodily injury and death and/or void your warranty.

© 2017 Pentair All rights reserved

Pentair, CADDY, CADWELD, CRITEC, ERICO, ERIFLEX, ERITECH and LENTON are owned by Pentair or its global affiliates.

All other trademarks are the property of their respective owners. Pentair reserves the right to change specifications without prior notice.

