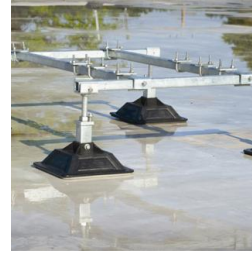
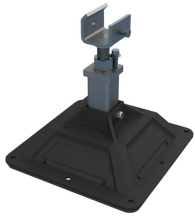
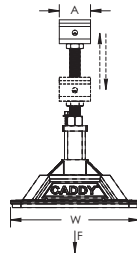
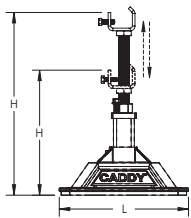


CADDY PYRAMID Equipment Support Post Base – PEB



- Ideal for use with strut channel type A and U-shaped brackets to create custom equipment supports
- Height adjustable
- Foam bottom offers low abrasion interface for better roof membrane protection
- Compatible with roof surfaces including single ply, bituminous, metal and spray foam
- Provides superior load distribution, even with varying rooftop surfaces
- Hot-dip galvanized and UV stabilized for long lasting performance
- Supports green building requirements; thermoplastic bases are made from recycled material and can contribute to earning LEED credits



Part Number	PEB
Material	Steel Polypropylene Polyethylene
Finish	Hot-Dip Galvanized
Temperature	-30 to 130 °F
Static Load Safety Factor	3:1
Height (H)	12" – 18"
Length (L)	12"
Width (W)	12"
A	3"
Surface Area	144 in ²
Unit Weight	9 lb
Static Load (F)	750 lb
Standard Packaging Quantity	2 pc
UPC	78285684534
EAN-13	8711893129021

The end user must select and evaluate the strut framing to ensure the custom assembled equipment support can properly support the applied load.



WARNING

Pentair products shall be installed and used only as indicated in Pentair's product instruction sheets and training materials. Instruction sheets are available at erico.pentair.com and from your Pentair customer service representative. Improper installation, misuse, misapplication or other failure to completely follow Pentair's instructions and warnings may cause product malfunction, property damage, serious bodily injury and death and/or void your warranty.

© 2017 Pentair All rights reserved

Pentair, CADDY, CADWELD, CRITEC, ERICO, ERIFLEX, ERITECH and LENTON are owned by Pentair or its global affiliates.

All other trademarks are the property of their respective owners. Pentair reserves the right to change specifications without prior notice.

