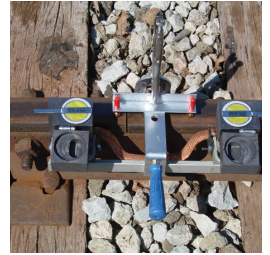
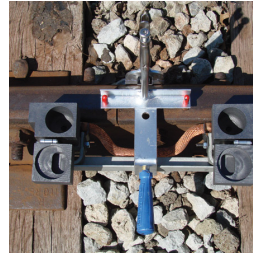
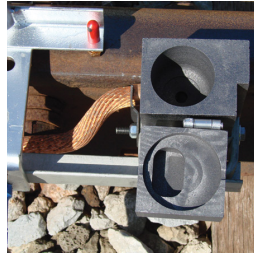
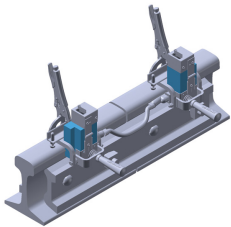


Joint Bond Mold Pair Only, Power – PBC2WM



- Pair of replacement molds with mounting parts designed for the installation of jumper bonds to the head of the rail
- Connection is made within the confines of the splice plate
- Includes mold cleaner and flint ignitor



Part Number	PBC2WM
Material	Graphite
Rail Type	85 lb to 141 lb T-Rail Sections
Bond Terminal Style	C
Conductor Size	250 kcmil Stranded
Conductor Outer Diameter, Nominal	3/4"
Mold Only	Yes
Welding Material	PB90, Sold Separately
Bond Clip	B194C, Sold Separately
Standard Packaging Quantity	1 pc
UPC	78285667304

WARNING

Pentair products shall be installed and used only as indicated in Pentair's product instruction sheets and training materials. Instruction sheets are available at erico.pentair.com and from your Pentair customer service representative. Improper installation, misuse, misapplication or other failure to completely follow Pentair's instructions and warnings may cause product malfunction, property damage, serious bodily injury and death and/or void your warranty.

© 2017 Pentair All rights reserved

Pentair, CADDY, CADWELD, CRITEC, ERICO, ERIFLEX, ERITECH and LENTON are owned by Pentair or its global affiliates.

All other trademarks are the property of their respective owners. Pentair reserves the right to change specifications without prior notice.