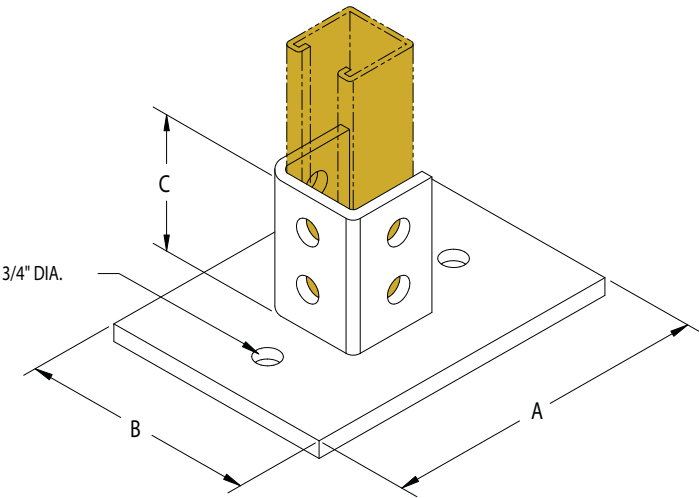


STRUT POST BASE P09

Post Base for 'A' Channel

- Surface Finish: Electro-zinc plated

Part Number	A	B	C
P090000EG	6"	3-1/2"	3-1/2"

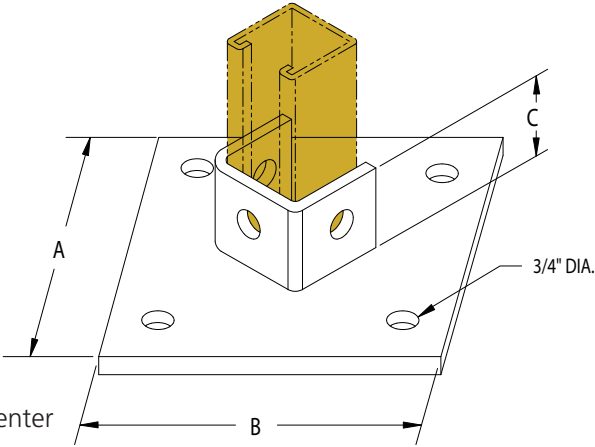


STRUT POST BASE P10

Post Base for 'A' Channel

- Surface Finish: Electro-zinc plated

Part Number	A	B	C
P100000EG	6"	6"	1-5/8"



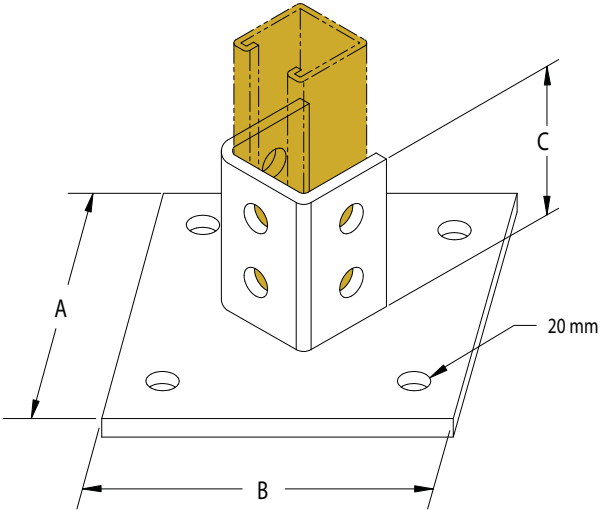
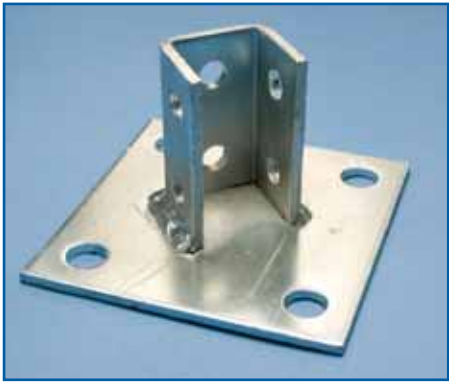
FITTING SPECIFICATIONS (unless noted otherwise):
Hole sizes 9/16", Spacing 13/16" from edge and 1-7/8" on center
Width 1-5/8", Thickness 1/4", Standard Finish: EG

STRUT POST BASE P11

Post Base for 'A' Channel

- Surface Finish: Electro-zinc plated

Part Number	A	B	C
P110000EG	6"	6"	3-1/2"

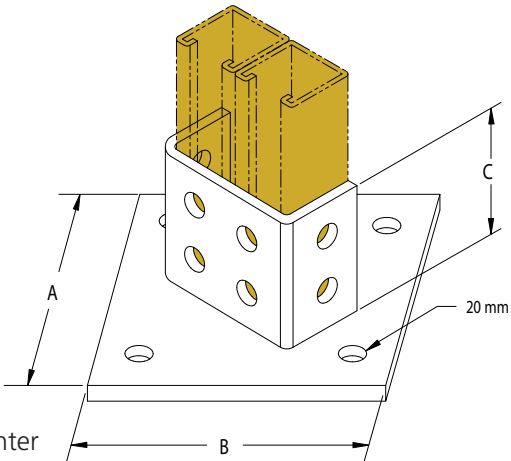
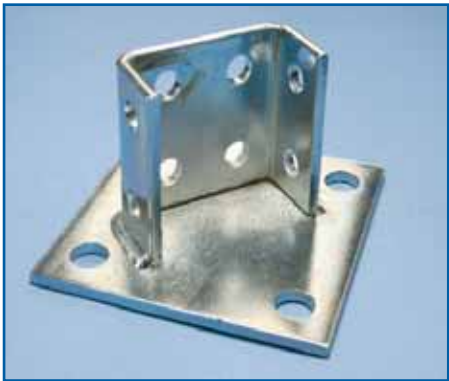


STRUT POST BASE P13

Post Base for Welded Channel

- Surface Finish: Electro-zinc plated

Part Number	A	B	C
P130000EG	6"	6"	3-1/2"



FITTING SPECIFICATIONS (unless noted otherwise):
Hole sizes 9/16", Spacing 13/16" from edge and 1-7/8" on center
Width 1-5/8", Thickness 1/4", Standard Finish: EG