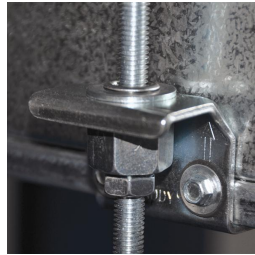
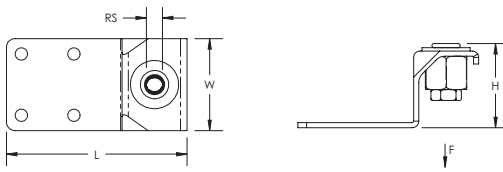


CADDY ROD LOCK Bottom-Mount Duct Bracket, Narrow – CRLD37BNEG



- Ideal for modular assembly – allows attachment of brackets to sections of duct while safely on the ground
- Non-slotted bracket allows for attachment after the final horizontal position of the duct is achieved
- Easy "push-to-install" design allows installers to simply push the threaded rod through the mounting hole, instantly holding it in position
- Ready to use out of the box and eliminates the need for cutting and preparing sections of strut, angle iron, or strap
- Integrated adjustment nut enables fine tuning the system height up or down
- Lock nut can be finger tightened, locking the rod in place
- Extremely useful in tight spaces where wrenches are difficult to use
- Includes self-tapping sheet metal screws to attach bracket to duct



| | |
|-----------------------------|----------------------|
| Part Number | CRLD37BNEG |
| Material | Steel |
| Finish | Electrogalvanized |
| Rod Size (RS) | 3/8" |
| Height (H) | 1.9" |
| Length (L) | 4.1" |
| Width (W) | 2.1" |
| Static Load (F) | 1,400 lb |
| Certifications | SMACNA Duct Brackets |
| Standard Packaging Quantity | 25 pc |
| UPC | 78285679872 |

WARNING

Pentair products shall be installed and used only as indicated in Pentair's product instruction sheets and training materials. Instruction sheets are available at erico.pentair.com and from your Pentair customer service representative. Improper installation, misuse, misapplication or other failure to completely follow Pentair's instructions and warnings may cause product malfunction, property damage, serious bodily injury and death and/or void your warranty.

© 2017 Pentair All rights reserved

Pentair, CADDY, CADWELD, CRITEC, ERICO, ERIFLEX, ERITECH and LENTON are owned by Pentair or its global affiliates.

All other trademarks are the property of their respective owners. Pentair reserves the right to change specifications without prior notice.

