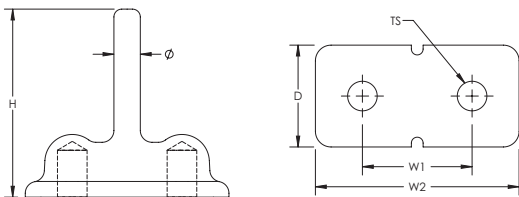


# B162 Earthpoint, Two Stud – B1622Q



- Long-lasting design
- Low ground resistance and impedance
- Superior electrical conductivity and resistance to corrosion
- Electrically and mechanically robust and reliable
- Easy to install as a Prefabricated Earthbridge once ERICO CADWELD welded to a piece of conductor



Part Number	B1622Q
Material	Brass
Width 1 (W1)	1 3/4"
Width 2 (W2)	3 1/4"
Depth (D)	1 5/8"
Height (H)	3"
Diameter (Ø)	0.53"
Thread Size (TS)	1/2 UNC
Standard Packaging Quantity	1 pc
UPC	78285632237

Assemblies require conductors and ERICO CADWELD connections, which must be ordered separately.

## WARNING

Pentair products shall be installed and used only as indicated in Pentair's product instruction sheets and training materials. Instruction sheets are available at [erico.pentair.com](http://erico.pentair.com) and from your Pentair customer service representative. Improper installation, misuse, misapplication or other failure to completely follow Pentair's instructions and warnings may cause product malfunction, property damage, serious bodily injury and death and/or void your warranty.

© 2017 Pentair All rights reserved

Pentair, CADDY, CADWELD, CRITEC, ERICO, ERIFLEX, ERITECH and LENTON are owned by Pentair or its global affiliates.

All other trademarks are the property of their respective owners. Pentair reserves the right to change specifications without prior notice.