

WIREMOLD®
Wire Management Systems
60 Woodlawn St. W. Hartford, CT 06110

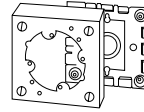
38052

V5735

QTY. 1



Listed
368B

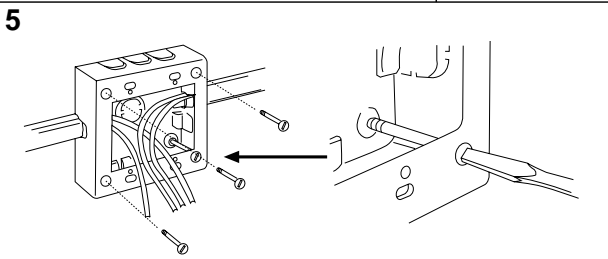
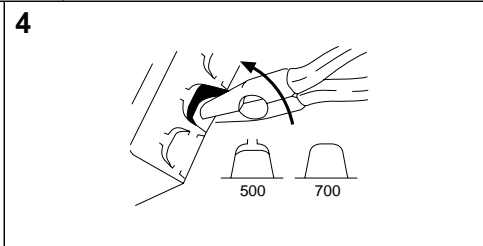
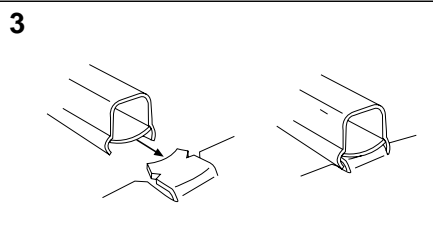
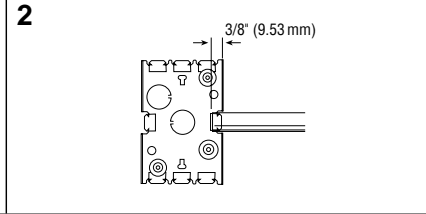
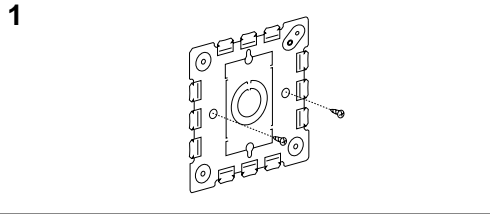


Distribution Box, 1 3/8" (35 mm) Deep
Boite de Distribution, 35 mm (1 3/8") de Profondeur
Caja de Distribución, 35 mm (1 3/8") de Profundidad

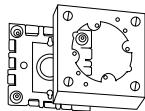
Use #8 (5/16", 7.9 mm head size) flat head fastener or equivalent to mount base to surface.

Utiliser une attache à tête plate de calibre 8 (tête de 7.9 mm, 5/16" po.) ou une fixation équivalente pour assujettir le tube guide-fils et les raccords à la surface de montage.

Use un sujetador de cabeza plana No. 8 (tamaño de cabeza: 7.9 mm, 5/16" de pulgada) o su equivalente para unir la canalita y los accesorios a la superficie de montaje.



MADE IN U.S.A.



Listed
368B



QTY. 1

V5735

Distribution Box, 1 3/8" (35 mm) Deep
Boite de Distribution, 35 mm (1 3/8") de Profondeur
Caja de Distribución, 35 mm (1 3/8") de Profundidad

WIREMOLD®
Wire Management Systems
60 Woodlawn St. W. Hartford, CT 06110