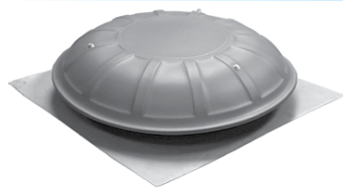


# Attic Fans

## Power Attic Mount Dome Ventilator



Note: Photograph is a representation of stocked models. Actual model may vary in appearance.

### Features

- 120V Motor / 1-Phase
- Automatic thermostat (90°-130°F)
- Insect and bird screen installed
- Powder coated metal dome and base

### Standard Models

MFG CATALOG NUMBER	MFG MODEL NUMBER	DOMES COLOR	SPEED	CFM .03 SP	VOLTS	HP	RPM	ATTIC SIZE / SQ. FT.	WT. (LBS)
08664202	PDV-305-1MB-GY	Gray	1	1000	120	1/12	1050	Average/1600	18
08664302	PDV-305-1MB-BR	Brown	1	1000	120	1/12	1050	Average/1600	18
08664402	PDV-305-1MB-BLK	Black	1	1000	120	1/12	1050	Average/1600	18

## Gable Exhaust Fan



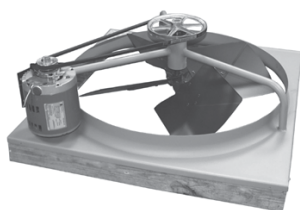
### Features

- 120V motor / 1-Phase
- Automatic adjustable thermostat (90°-130°F)
- Partially assembled (mounting tabs must be assembled)
- 15" diameter x 6" depth
- 4 mounting tabs on 16" centers

### Standard Models

MFG CATALOG NUMBER	MFG MODEL NUMBER	DESCRIPTION	CFM .03 SP	ATTIC SIZE/ ST. FT.	WT. (LBS)
08663702	GV-405-2B	Gable Mount Ventilator	1300	average/2000	11
08665202	AGD-1416B	Aluminum Damper for GV-405-2	----	----	3

## Belt Drive Wholehouse Fans



### Features

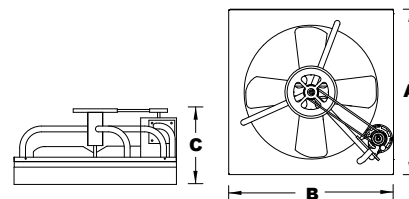
- 120V, 1-Phase, 2-Speed motors
- Shutters automatically open when fan is turned on and close tightly when fan is turned off
- Made in U.S.A.

**NOTE:** Belt Drive Fan with "No Joist Cut" Shutter.

### Standard Models

MFG CATALOG NUMBER	MFG MODEL NUMBER	SIZE	SPEED	MOTOR HP	CFM @ .1 IN. H2O PRESSURE DROP w/ SHUTTER	FAN SPEED RPM	FAN MOUNTING DIMENSIONS (IN)			EXHAUST SQ. FT. REQ'D	AMPS	WT. (LBS)
							A	B	C			
07936202	BD24-2-WHS	24"	2	1/3	4500/2700	612/410	28	29.5	14.5	7	5.7/4.8	40
07936302	BD30-2-WHS	30"	2	1/3	7600/5800	520/350	34	35.5	14.5	9	6.9/5.5	50
07936402	BD36-2-WHS	36"	2	1/3	9675/6400	395/265	40	41.5	14.5	12	6.3/3.1	64

### Fan Dimensions



## Ceiling Shutters

MFG CATALOG NUMBER	MFG MODEL NUMBER	FIT HOLE SIZE (I.D.)	OUTSIDE SIZE (O.D.)	FAN SIZE	WT. (LBS)
07944802	CS-10-W	26X26	28X28	24"	8
07944602	CS-13-W	32X34	34X36	30"	10
07945302	CS-14-W	34X34	36X36	30"	10
07944702	CS-18-W	32X43	34X45	36"	11
07945202	CS-19-W	34X43	36X45	36"	11

## Control Options

MFG CATALOG NUMBER	MFG MODEL NUMBER	DESCRIPTION	WT. (LBS)
07927002	2-SW	2 Speed wall switch & plate	1
05000802	1A22-7	SP Close on rise (Attic Thermostat) (80°-130°F)	1

"Joist out style" (For replacement only)