



Slimline and High Output Channels are ideal for maximum illumination in retail stores and commercial environments. Available in 4', 6', and 8' individual lengths as well as continuous row mounting.

Housing

High-gloss, baked white enamel finish on steel housing with removable wireway access panel. Fixture is shipped fully wired and assembled. CHX models have flip-up socket bar and turn fastener for attaching wireway cover.

Options

Options include modular wiring, plug-in systems and wire guards.

Electrical

Fully wired for 120V, 60Hz operation with thermally protected, automatic resetting, Class P, high-power-factor ballast, unless otherwise specified. UL listed, damp location.

Mounting

Combination end plate/joiner connects units for continuous row or wire through. Heavy duty joiner plate available. Surface or pendant mount, high output model must be suspended at least 6" from ceiling for cooler operation.

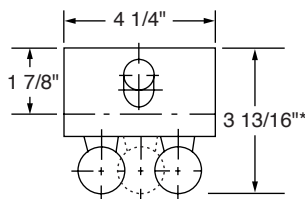
CHX Slimline And High Output Channel Ordering Information

Series	# Lamps	Lamp Length (nominal)	ELS Options
CHX	1	48 = 48"	ELS1 = Emergency Lighting (low lumens)
	2	72 = 72"	ELS2 = Emergency Lighting (medium lumens)
	3	96 = 96"	ELS3 = Emergency Lighting (high lumens)
	4		
	21 = Tandem, Two Lamps		

Ballast	Voltage
B5 = Electronic T12	UNV = 120-277V
HOB5 = High Output Electronic T12	120 = 120V
B11 = Electronic T8	277 = 277V
HOB11 = High Output Electronic T8	
HO* = High Output T12	
VHO* = Very High Output T12	

*Must be mounted at least 6" from surface

Dimensions



*HO and VHO are 4 5/8" deep

Options	Accessories
Cord and Plug CPT(x) 1 = 120V 2 = 277V CP3 = Cord & Plug - 120V Straight Blade 5-15P Plug-in Connectors <u>Ballast wired to Black:</u> PL1 - one circuit, two wires PL2 BK - two circuits, three wires <u>Ballast wired to Red:</u> PL2 RD - two circuits, three wires FB = Fast blow fuse SB = Slow blow fuse	Reflectors* (x) Enter (W) for white or (S) for specular aluminum <u>Symmetric</u> SR(x)30 = 36" (Order 2 for 72" units) SR(x)40 = 48" (Order 2 for 96" units) <u>Asymmetric</u> AR(x)30 = 36" (Order 2 for 72" units) AR(x)40 = 48" (Order 2 for 96" units) AC = Alignment Clips CA24 = Chain Hanger Assembly - (2) 18" chains, (2) "V" hooks, (2) "S" hooks for total drop 24" CS24 = "S" Hook (4) Chain Hanger Assembly (24" total drop) PM(x) = Pendant Mount, white stem - specify length in inches (24, 36, 48, 60, 72) C = Single white canopy (for use with pendant mount) CHJ = Housing Joiner SN = Snapper Brackets WG230 = 36" (Order 2 for 72" units) WG240 = 48" (Order 2 for 96" units)

*Not compatible with wire guards