

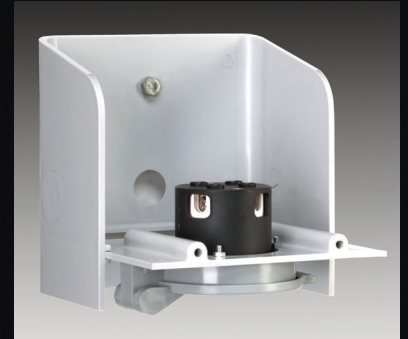
PBN Series

Non-metallic Power Inlet Boxes for use with Portable Generators.



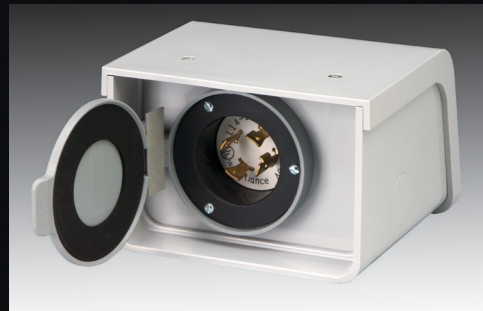
Patents Pending

The new PBN Series features an exclusive POP-FAST™ 3/4" knockout design that makes for exceptionally fast installation. The interior provides over 100 cubic inches of wiring space. The slide-out base permits easy 360° access to the terminals of the flanged inlet for fast wiring. The through-bolt design is held in place with two 4-1/8" JS500 screws. A water-resistant and bug-proof flanged inlet cover is standard.



Specifications

Enclosure: NEMA 3R, Outdoor
 Construction: .150" UV stabilized ABS
 Dimensions: 6-1/4" x 6-1/4" x 4-3/8"
 Shipping Weight: 2.5 lbs
 Wiring Space: 103 cubic in.
 Knockouts: 3@3/4"



Cat. No.	Conf.	Amps@Volts
PBN15	5-15	15A@125VAC
PBN20	L14-20	20A@125/250VAC
PBN21	L5-20	20A@125VAC
PBN30	L14-30	30A@125/250VAC
PBN31	L5-30	30A@125VAC
PBN50	CS6375	50A@125/250VAC
PBN51	CS6377	50A@125VAC

Reliance Controls Corporation
 2001 Young Court
 Racine, WI 53404 USA
 800- 634-6155
 FAX 262-634-6436
www.reliancecontrols.com

RELIANCE
 CONTROLS
 ELECTRICAL INNOVATION SINCE 1909™