



## EASILY FIX AND IMPROVE BROKEN FISH TAPE ENDS

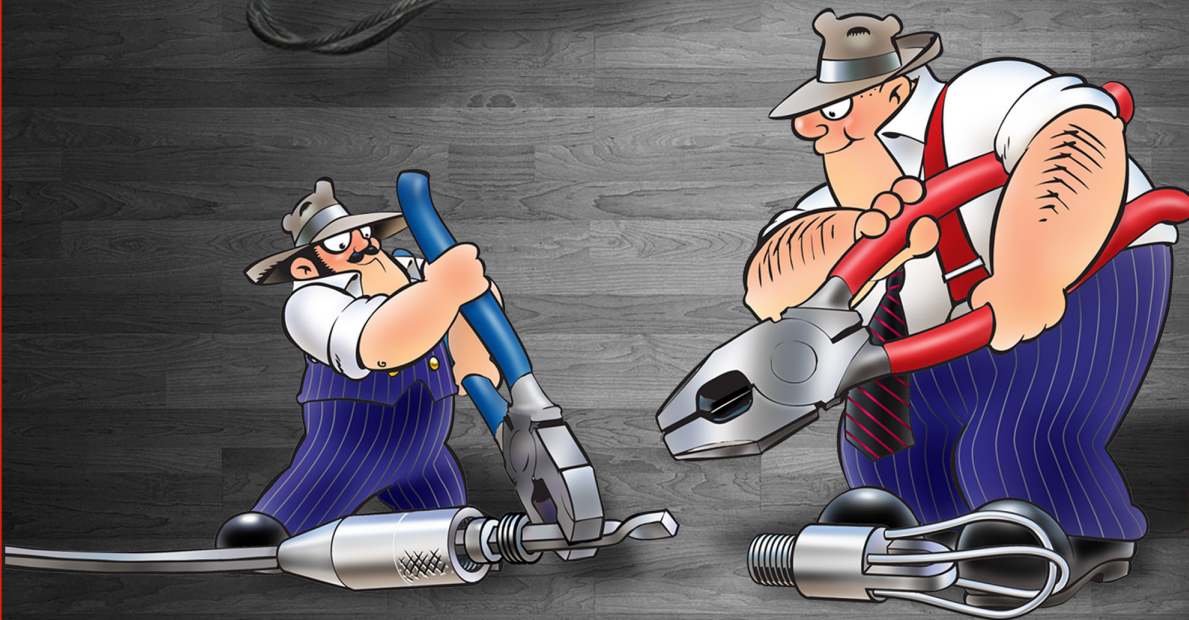
The Flex Flyer features a quick change swivel head that installs on the end of a fish tape in 20 seconds by twisting the fish tape with two pairs of pliers. The loop technology allows the leader to move smoothly through all types of conduit as well as flex. The standard 1/4" - 28 threads allow for other types of leaders to be attached to the quick change head.

- Installs in under 20 seconds using two pairs of pliers, no torch needed
- Flies through those tough conduit runs
- The loop technology allows the leader to move through all types of conduit as well as flex
- Loops allow leader to be snagged from other end of conduit run when necessary
- Standard 1/4"-28 threads allow for the use of other types of leaders on quick change base

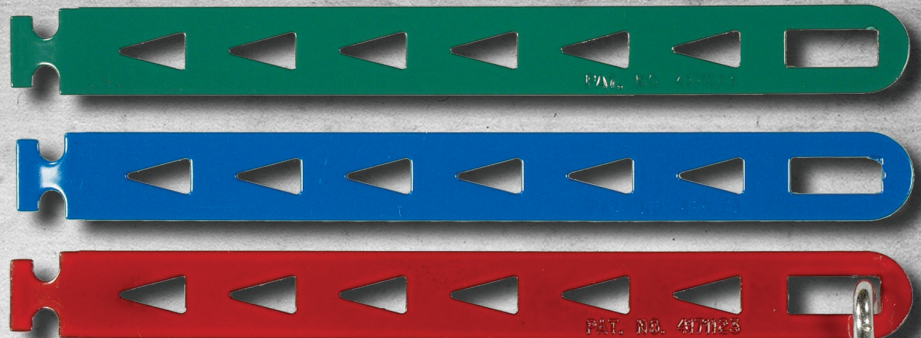
Part#

69050 - 1/2" Flex flyer

69075 - 3/4" Flex flyer



Find Out More!



**USE THE SNATCH STRAP FOR FAST ATTACHMENT ON CONDUIT PULLS.  
NO STRIPPING OR TAPING REQUIRED!**

Features

- Pull more conductors with less effort
- Can be chained together
- Colour coded for easy circuit and phase identification

Part# 69455