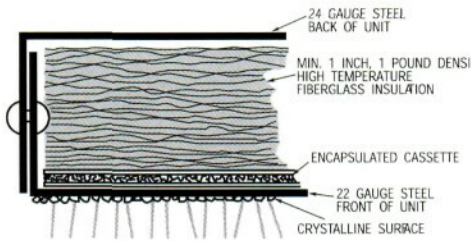


STANDARD FEATURES

CUTAWAY DRAWING OF HEATING PANEL



METAL:
 Back - 24 Gauge Galvanized or Aluminized Steel.
 Front - 22 Gauge Galvanized or Aluminized Steel.
 Sides - Overlapping Front and Back.

WIRE:
 Internal - 200°C, 14 Gauge, Teflon insulated.
 External - Pig Tails with 48" of 1/2" flexible conduit and connector for J-Box.

ELEMENT:
 The encapsulated cassette element delivers a uniform temperature distribution over entire panel surface.

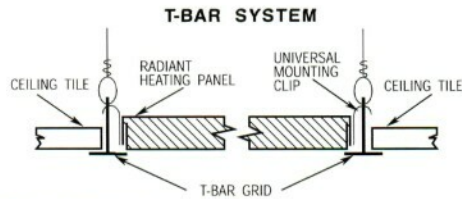
INSULATION:
 Minimum 1 inch, 1 pound density, high temperature fiberglass.

SURFACE:
 All ceiling and wall mounted panels are coated with unique crystalline surface. Birch white finish.

ACCESSORY MOUNTING FRAMES

PRODUCT	DESCRIPTION
QSF2424	Surface Mounting Frame for 24" x 24" Panels
QSF2448	Surface Mounting Frame for 24" x 48" Panels
QRF2424	Recess Mounting Frame for 24" x 24" Panels
QRF2448	Recess Mounting Frame for 24" x 48" Panels

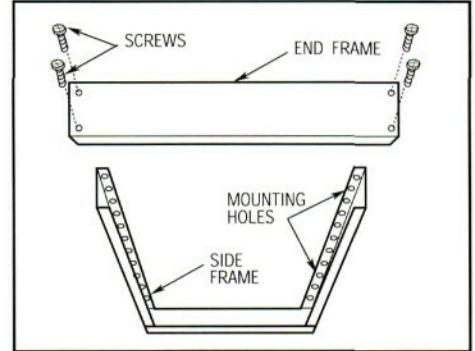
STANDARD FINISH - Standard mounting kits finished white to blend with standard panel birch white finish.



range. Without the panel's crystalline surface a panel will be less radiant, operate at higher temperature and produce energy at shorter wavelengths.

ELEMENT - Encapsulated cassette heating element assures uniform temperatures and long life.

WIRING - For connection to the main power supply, the heater is completely prewired including green ground wire, with the lead wires housed in a 48-inch length of flexible metal conduit and connector for J-Box mounting.

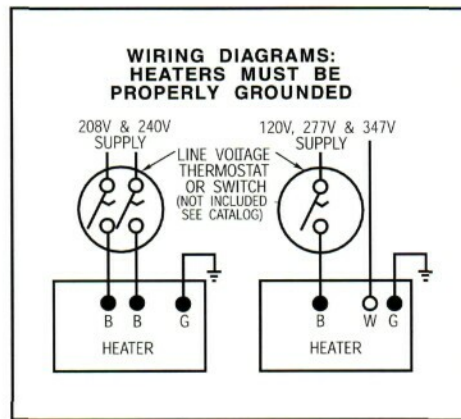


SELECTION CHART

CAT. NO.	VOLTS	WATTS	zDIM. (IN.)
CP251	120	250	24 x 24 x 1
CP258	208		
CP252	240		
CP257	277		
CP253	347		
CP311	120	310	24 x 24 x 1
CP318	208		
CP312	240		
CP317	277		
CP313	347		
CP371	120	375	24 x 48 x 1
CP378	208		
CP372	240		
CP377	277		
CP373	347		
CP501	120	500	24 x 48 x 1
CP508	208		
CP502	240		
CP507	277		
CP503	347		
CP621	120	625	24 x 48 x 1
CP628	208		
CP622	240		
CP627	277		
CP623	347		
CP751	120	750	24 x 48 x 1
CP758	208		
CP752	240		
CP757	277		
CP753	347		

CRYSTALLINE SURFACE - The panel's unique crystalline surface greatly enhances the radiant characteristics of the heating panel.

Radiant output is in the 8-10 micron wavelength. This is ideal for comfort. Human skin will absorb 99% of the radiant energy in these wavelengths. Humans themselves radiate heat predominately in that micron



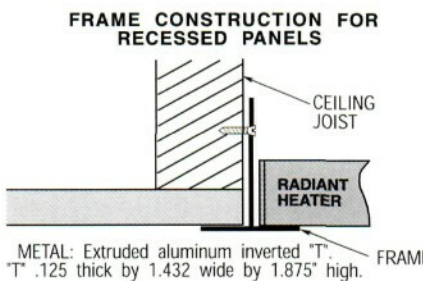
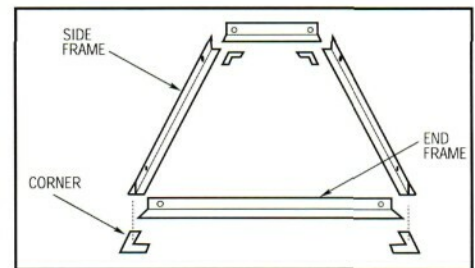
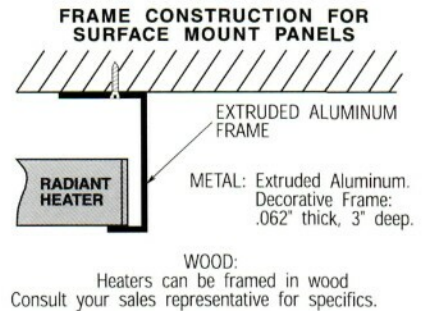
UNIVERSAL HANGING CLIPS - All radiant ceiling panels are supplied with COMBINATION EARTHQUAKE/T-BAR GRIP CLIPS as a standard feature. These clips have holes for support chains or can be folded over the T-BAR to reduce lateral movement.

CERTIFICATION AND SAFETY

FIRE RATING - Heating panels do not have a fire rating, but construction is of fire retardant materials. Panels normally are treated like light fixtures. If necessary, acoustical tile can be placed on top of the panels.

HAZARDOUS AREAS - Heating panels do not have a hazardous rating.

2. CUSTOM SIZE FRAMES



RADIANT CEILING PANELS

- For complete or supplemental heating in commercial, residential and institutional structures—new or remodeled construction of offices, classrooms, family rooms, bathrooms... whenever the utility and comfort of radiant ceiling heating is desired.

- **Radiant ceiling panel applications as primary or supplemental heat include...**

- **Commercial** building perimeters to neutralize down-drafts over glass, enclosed outside walkways, and washrooms.

- **School** locker rooms, cafeterias, laboratories and classrooms.

- **Hospital** burn and trauma areas, recovery and examination rooms.

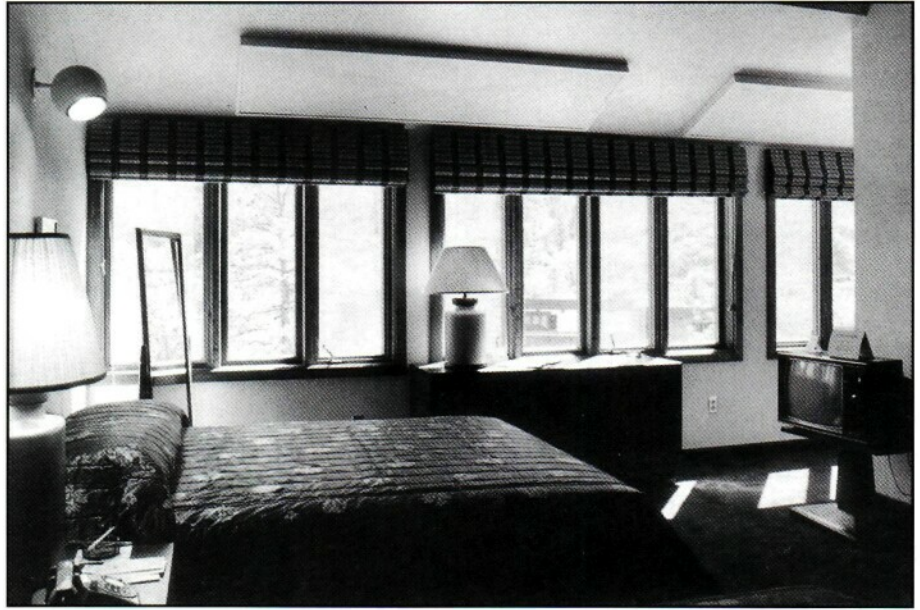
- **Residential** isolated cold spots, above sliding glass doors and floor to ceiling windows.

- Clean, gentle, comfortable heat that is ideal for offsetting perimeter heat loss; saving substantial energy over other systems by heating people and objects rather than all the air in a room or building.

- People are comfortable at lower room temperatures with a radiant system than with a hot air convective system. . . comfortable in the 60's rather than in the 70's. And lower thermostat settings can save hundreds of dollars in energy bills each year.

- Ceiling panels allow full usage of wall and floor space. No noise. No moving parts. No maintenance. No ceilings, walls or drapes to clean. No dried out air.

- A simple system, easy to install, easy to control room by room without wasting energy needlessly heating unoccupied spaces.



- **BUILDING RESTORATION:** Ceiling panels make attractive, energy saving restoration of old buildings possible or they can be used to replace expensive, outdated heating systems.

