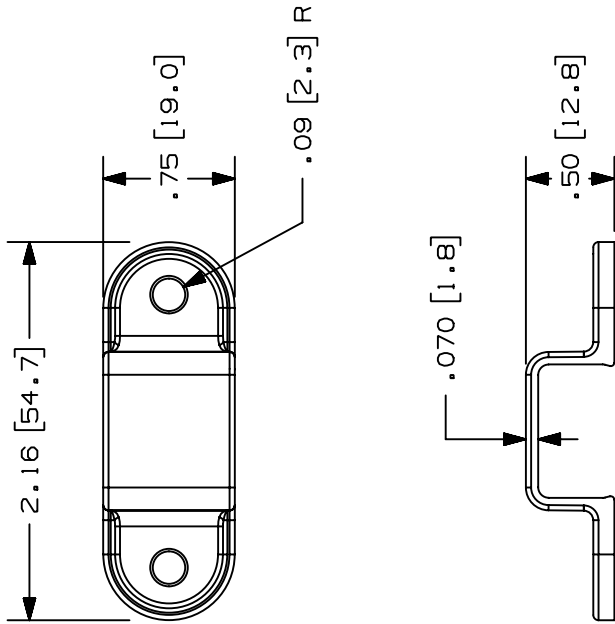


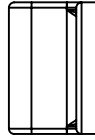
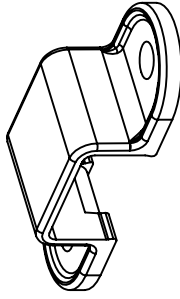
THIS COPY IS PROVIDED ON A RESTRICTED BASIS AND IS NOT TO BE USED IN ANY WAY DETRIMENTAL TO THE INTERESTS OF PANDUIT CORP.

PANDUIT P/N	WEIGHT
LMD3	.07 LBS/10 PCS. .3 G/10 PCS.



NOTES:

- SEE CURRENT CATALOG FOR ADDITIONAL PART NUMBER SUFFIXES TO INDICATE COLOR AND OR PACKAGE QUANTITY.
- DIMENSIONS IN PARENTHESIS ARE IN METRIC.
- INTERFERENCE FIT BETWEEN STRAP AND RACEWAY FOR EASE OF INSTALLATION.
- STRAPS CAN BE USED AS COUPLER BETWEEN RACEWAY SECTIONS.
- STRAPS CAN BE USED WITH LD AND LDP RACEWAYS TO PROVIDE COMPLETE TAMPER RESISTANCE.



CAO FILENAME/LAYERS D35541CR_LMD3_C_02.PRT

PANDUIT CORP. TINLEY PARK, ILLINOIS

MOUNTING STRAP FOR LDS3
DOUBLE HOLE (LMD3)
CUSTOMER DRAWING

UNLESS OTHERWISE SPECIFIED, DIMENSIONAL TOLERANCES ARE: (.X) ± (XXX) ±.010 (.3) (.XX) ±.03 (.8) ANGLES ±		UNLESS OTHERWISE SPECIFIED, ALL DIMENSIONS ARE GIVEN IN INCHES, THIRD ANGLE PROJECTION.											
2	03-08-04	JHEP	RGRO	B. REMOVED CD FROM NOTE 5	35541-44	RGRO	RGRO						
1	07-08-99	DW	HIW	A. REVISED MATERIAL AND WEIGHT	35541-44	HIW	CEF						
R	10-02-96	PM	CEF	RELEASED TO PRODUCTION	35541-44	CEF	CEF						
REV	DATE	BY	CHK	DESCRIPTION	ECN	R	CUST	SUP					
				MAT'L:	PVC	DRAWN BY: PM		SCALE: FULL		DRAWING NO. 35541-44		DWG SIZE A	