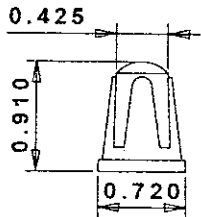


TOP-L

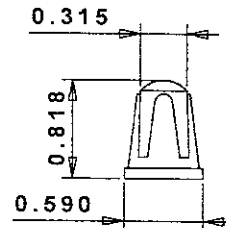


p/n: CSB-16  
 Max ID: 0.460"  
 Tapered threads  
 10 thread per inch

**CSB-16 Wire Combinations:**  
 (Others are possible)

- 2 #8
- 2 or 3 #10
- 2 to 5 #12
- 2 to 5 #14
- 1 #8 + 1 or 2 #10
- 1 #8 + 1 to 4 #10 or #16 or #18
- 2 #8 + 1 #14
- 1 #10 + 1 to 4 #12
- 1 #10 + 1 to 3 #14
- 1 #10 + 4 #16
- 1 #10 + 3 #18
- 2 #10 + 1 or 2 #12
- 2 #10 + 3 #14
- 3 #10 + 1 #12 or #14
- 3 #10 + 1 or 2 #16
- 1 #12 + 2 to 4 #14
- 2 #12 + 1 to 3 #14
- 3 #12 + 1 or 2 #14 or #16
- 3 #12 + 2 #18
- 4 #12 + 1 #14 or #16
- 3 #14 + 2 #16
- 4 #14 + 1 #16 or #18

TOP-M



p/n: CSB-17  
 Standard or Fine Thread (-A)  
 Max ID (Standard): 0.335"  
 Max ID (Fine): 0.315"  
 10 threads per inch

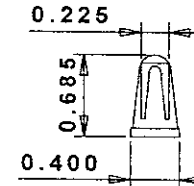
**CSB-17 Fine Thread**  
 Wire Combinations:  
 (Others are possible)

- 2 #10
- 1 #10 + 1 or 2 #12
- 1 #10 + 1 or 2 #14
- 1 #10 + 1 to 3 #16
- 3 #12
- 2 #12 + 1 #14
- 2 #12 + 1 or 2 #16
- 1 #12 + 1 to 3 #14
- 1 #12 + 1 to 4 #16
- 4 #14
- 3 #14 + 1 #16
- 2 #14 + 1 #12
- 2 #14 + 1 to 3 #16
- 1 #14 + 1 or 2 #12
- 1 #14 + 1 to 4 #16
- 5 #16
- 3 #16 + 1 #14
- 2 #16 + 1 or 2 #12
- 2 #16 + 1 or 2 #14
- 1 #16 + 1 or 2 #12
- 1 #16 + 1 to 3 #14

**CSB-17 Standard Thread**  
 Wire Combinations:  
 (Others are possible)

- 2 #10
- 1 #10 + 1 #12
- 1 #10 + 1 #14
- 1 #10 + 3 #16
- 2 #12
- 1 #12 + 1 or 2 #14
- 1 #12 + 1 to 3 #16
- 3 #14
- 2 #14 + 1 or 2 #16
- 1 #14 + 1 to 4 #16
- 1 #14 + 1 or 2 #12
- 5 #16
- 3 #16 + 1 #12

TOP-S



p/n: CSB-18  
 Max ID: 0.265"  
 Tapered Threads  
 20 threads per inch

**CSB-18 Wire Combinations:**  
 (Others are possible)

- 2 #14
- 3 #16
- 1 #12 + 1 #16
- 1 #14 + 1 #16