

TERMINAL BLOKS™
Double Row
9/16" Centers, 600V
TB SERIES



FEATURES

- Heavy duty construction with corrosion-resistant terminal plates ensures dependable, easy-access multiple terminations.
- Made from strong, glass-filled polyester.
- Screws are #8 stud size.
- Other sizes and styles available.
- Contact NSI for price and availability.

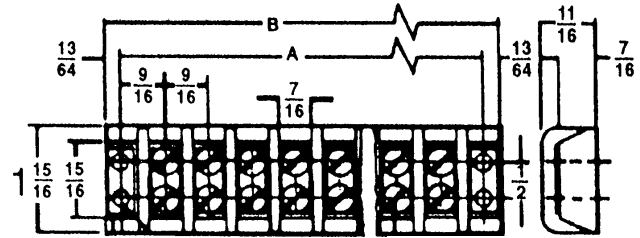
TEMPERATURE RATING:

208 °C.

VOLTAGE:

30AMP.

600V Max.



CAT. NO.	NUMBER OF CIRCUITS	DIMENSIONS		STD. CTN. QTY.
		A	B	
TB3096-2	2	1.688	2.109	10
TB3096-4	4	2.812	3.250	10
TB3096-6	6	3.938	4.375	6
TB3096-8	8	5.062	5.500	4
TB3096-10	10	6.203	6.625	4
TB3096-12	12	7.328	7.750	3
TB3096-14	14	8.453	8.875	3