



Catalog Number:
Item Description:
UPC Code:

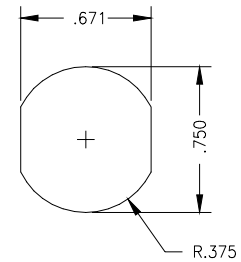
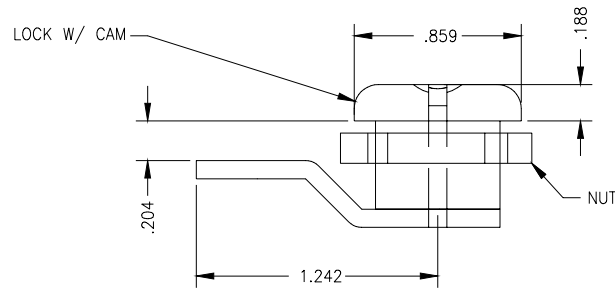
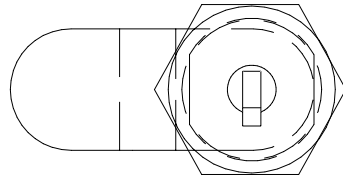
A-LK3R
SEAMWELD ENCL ACCESSORIES
784572272378

Brand Name: Milbank
Type: Locking Handle
Application: Enclosure Accessory
Material: Steel Zinc
Color: Chrome
Insulation: None
Consist Of: Handle with 2 Keys
Knockouts: False



Utility requirements may vary. Always consult the serving utility for their requirements prior to ordering or installing this equipment. This product must always be installed by a licensed electrician. Installation of this equipment may require local electrical inspector approval.

BILL OF MATERIAL		
NO.	QTY.	DESCRIPTION



REQUIRED HOLE
DETAIL

NOTES:

1. LOCK PROVIDED WITH 2 KEYS.
2. KEY CODE 642.
3. WHEN SOLD AS A-LK3R PLACE IN BAG# (704739) FOR SHIPPING.

* 4-12-00	FIRST RELEASE PDR # 2007	JEL
*19-14-01	A-LK1 TO A-LK3R PMR# 2451	DY

REV.	DATE	DESCRIPTION	BY
		MATERIAL	
		FINISH	

TOLERANCES: UNLESS NOTED OTHERWISE		CATALOG NUMBER	A-LK3R
X.X	± .1	TITLE	LOCK NATIONAL CABINET
X.XX	± .03		
X.XXX	± .015		
X	± .2		
THIRD ANGLE PROJECTION		CUSTOMER	
DRAWN: JEL		DRAWING NUMBER	705423-11
CHKD:		SCALE: NTS	MILBANK MFG. CO.
APPR:		DATE: 4-12-00	GENERAL OFFICES KANSAS CITY, MO.