

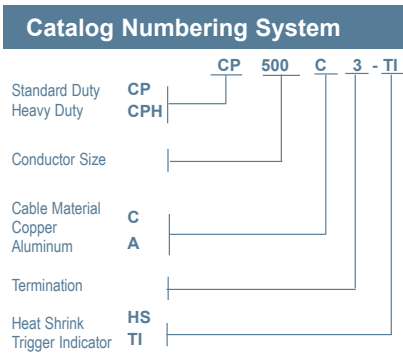
# CP 600V Cable Protectors

## Cable Protectors

Mersen CP Cable Protectors are special purpose limiters which are crimped or bolted to cables or terminals to clear and isolate faults quickly, increasing the reliability of service entrance and distribution runs. CP Cable Protectors have a 200,000A interrupting rating, yet will carry low cable overloads which are handled by standard protective devices. Cable protectors are rated in terms of cable size and material (Al or Cu). Heavier duty CPH cable protectors are available on special order. Heat shrinkable (HS) tubing can be specified for field installation. TI blown fuse trigger indicators may be available upon request. Refer to the application information section for more information.

### Features/Benefits:

- Fiberglass bodies for dimensional stability in harsh environments
- Catalog number stamped into terminal for permanent identification
- Crimp terminals for aluminum cable include oxide inhibitor
- Molded rubber boots or heat shrinkable tubing available for insulation and protection
- Current limiting device
- Permitted by National Electric Code



\*Please consult factory for special terminations.

Type	Description	Cable Size	Catalog # for Cable Type			
			Copper	Aluminum		
1	Cable to Cable	2	CP2C1	-		
		1/0	CP1/0C1	-		
		2/0	CP2/0C1	-		
		4/0	CP4/0C1	CP4/0A1		
		250kcmil	CP250C1	CP250A1		
		350kcmil	CP350C1	CP350A1		
		400kcmil	CP400C1	-		
		500kcmil	CP500C1	CP500A1		
		600kcmil	CP600C1	CP600A1		
		750kcmil	CP750C1	CP750A1		
3	Cable to Offset Bus	2	CP2C3	-		
		1/0	CP1/0C3	-		
		2/0	CP2/0C3	-		
		4/0	CP4/0C3	CP4/0A3		
		250kcmil	CP250C3	CP250A3		
		350kcmil	CP350C3	CP350A3		
		400kcmil	CP400C3	-		
		500kcmil	CP500C3	CP500A3		
		600kcmil	CP600C3	CP600A3		
		750kcmil	CP750C3	CP750A3		
5	Straight Bus to Offset Bus	2/0	CP2/0C5	CP2/0C5		
		4/0	CP4/0C5	CP4/0C5		
		250kcmil	CP250C5	CP250C5		
		350kcmil	CP350C5	CP350C5		
		500kcmil	CP500C5	CP500C5		
		600kcmil	CP600C5	CP600C5		
		750kcmil	CP750C5	CP750C5		
		6	Mole to Cable	4/0	CP4/0C6	CP4/0A6
				250kcmil	CP250C6	CP250A6
				350kcmil	CP350C6	CP350A6
400kcmil	CP400C6			-		
500kcmil	CP500C6			CP500A6		
750kcmil	CP750C6			CP750A6		
8	Mole to Offset Bus			4/0	CP4/0C8	CP4/0C8
				250kcmil	CP250C8	CP250C8
				350kcmil	CP350C8	CP350C8
				500kcmil	CP500C8	CP500C8
		750kcmil	CP750C8	CP750C8		



### Ratings:

Sizes #2 to 1000kcmil  
aluminum or copper

**Volts** : 600VAC  
**IR** : 200kA I.R. AC

### Approvals:

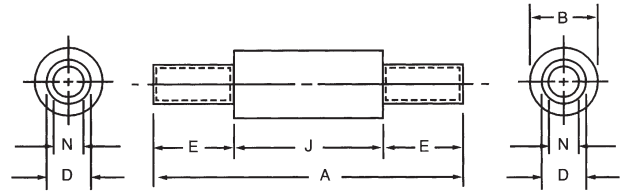
- UL listed to File E305297



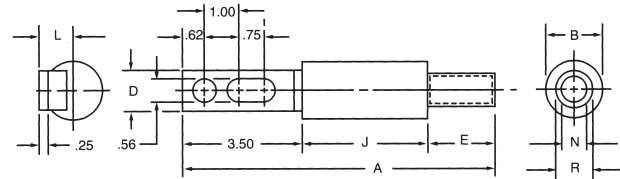
# CP 600V Cable Protectors

## Type C1 – Dimensions (Cable to Cable - Copper)

Catalog No.	Cable* Size	Dimensions - Inches (mm)					
		A	B	D	E	J	N
CP2C1	#2	7.12 (180)	1.44 (37)	.42 (11)	1.75 (44)	3.62 (92)	.31 (7.9)
CP1/OC1	1/0	7.12 (180)	1.44 (37)	.52 (13)	1.75 (44)	3.62 (92)	.39 (9.9)
CP2/OC1	2/0	7.12 (180)	1.44 (37)	.56 (14)	1.75 (44)	3.62 (92)	.44 (11)
CP4/OC1	4/0	7.12 (180)	1.44 (37)	.68 (17)	1.75 (44)	3.62 (92)	.55 (14)
CP250C1	250kcmil	7.38 (188)	1.44 (37)	.75 (19)	1.88 (48)	3.62 (92)	.62 (16)
CP350C1	350kcmil	7.62 (194)	1.62 (41)	.88 (22)	2.00 (51)	3.62 (92)	.71 (18)
CP400C1	400kcmil	7.62 (194)	1.62 (41)	.94 (24)	2.00 (51)	3.62 (92)	.75 (19)
CP500C1	500kcmil	9.38 (238)	1.88 (48)	1.05 (27)	2.88 (73)	3.62 (92)	.85 (22)
CP600C1	600kcmil	9.51 (242)	2.50 (64)	1.07 (27)	2.88 (73)	3.75 (95)	.94 (24)
CP750C1	750kcmil	9.51 (242)	2.50 (64)	1.32 (34)	2.88 (73)	3.75 (95)	1.06 (27)
CP1000C1	1000kcmil	10.00 (254)	3.00 (76)	1.50 (38)	3.13 (79)	3.75 (95)	1.16 (29)



Type C1



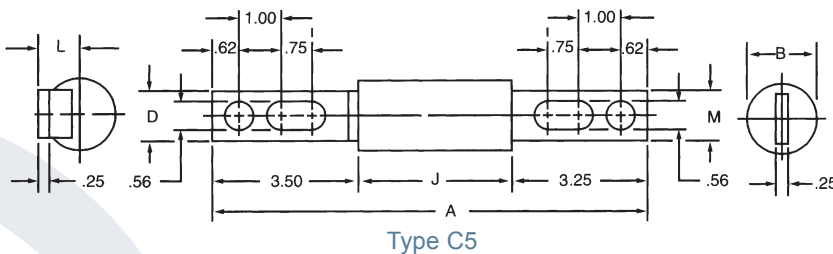
Type C3

## Type C3 – Dimensions (Cable to Offset Bus - Copper)

Catalog No.	Cable* Size	Dimensions - Inches (mm)								
		A	B	D	E	I	J	L	N	R
CP2C3	#2	8.87 (225)	1.44 (37)	1.12 (28)	1.75 (44)	3.50 (88.9)	3.62 (92)	.96 (24)	.31 (7.9)	.42 (11)
CP1/OC3	1/0	8.87 (225)	1.44 (37)	1.12 (28)	1.75 (44)	3.50 (88.9)	3.62 (92)	.96 (24)	.39 (9.9)	.52 (13)
CP2/OC3	2/0	8.87 (225)	1.44 (37)	1.12 (28)	1.75 (44)	3.50 (88.9)	3.62 (92)	.96 (24)	.44 (11)	.56 (14)
CP4/OC3	4/0	8.87 (225)	1.44 (37)	1.12 (28)	1.75 (44)	3.50 (88.9)	3.62 (92)	.96 (24)	.55 (14)	.68 (17)
CP250C3	250kcmil	9.00 (229)	1.44 (37)	1.12 (28)	1.88 (48)	3.50 (88.9)	3.62 (92)	.96 (24)	.62 (16)	.75 (19)
CP350C3	350kcmil	9.12 (232)	1.62 (41)	1.12 (28)	2.00 (51)	3.50 (88.9)	3.62 (92)	.96 (24)	.71 (18)	.88 (22)
CP400C3	400kcmil	9.12 (232)	1.62 (41)	1.12 (28)	2.00 (51)	3.50 (88.9)	3.62 (92)	.96 (24)	.75 (19)	.88 (22)
CP500C3	500kcmil	10.00 (254)	1.88 (48)	1.62 (41)	2.88 (73)	3.50 (88.9)	3.62 (92)	1.19 (30)	.85 (22)	1.05 (27)
CP600C3	600kcmil	10.13 (257)	2.50 (64)	2.00 (51)	2.88 (73)	3.50 (88.9)	3.75 (95)	1.31 (33)	.94 (24)	1.07 (27)
CP750C3	750kcmil	10.13 (257)	2.50 (64)	2.00 (51)	2.88 (73)	3.50 (88.9)	3.75 (95)	1.31 (33)	1.06 (27)	1.32 (34)
CP1000C3	1000kcmil	10.63 (270)	3.00 (76)	2.00 (51)	3.13 (79)	3.75 (95)	3.75 (95)	1.56 (40)	1.16 (29)	1.50 (38)

## Type C5 – Dimensions (Straight Bus to Offset Bus - Copper)

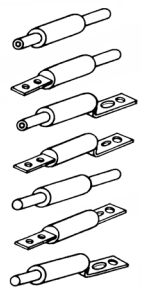
Catalog No.	Cable Size	Dimensions - Inches (mm)				
		A	B	D	J	M
CP4/OC5	4/0	10.37 (263)	1.44 (37)	1.12 (28)	3.62 (92)	1.12 (28)
CP250C5	250kcmil	10.37 (263)	1.44 (37)	1.12 (28)	3.62 (92)	1.12 (28)
CP350C5	350kcmil	10.37 (263)	1.62 (41)	1.12 (28)	3.62 (92)	1.12 (28)
CP400C5	400kcmil	10.37 (263)	1.62 (41)	1.12 (28)	3.62 (92)	1.12 (28)
CP500C5	500kcmil	10.37 (263)	1.88 (48)	1.62 (41)	3.62 (92)	1.19 (30)
CP600C5	600kcmil	10.50 (267)	2.50 (64)	2.00 (51)	3.75 (95)	1.31 (33)
CP750C5	750kcmil	10.50 (267)	2.50 (64)	2.00 (51)	3.75 (95)	1.31 (33)



Type C5

### Cable Type

- TYPE 1 —Cable to cable
- TYPE 2 —Bus to cable
- TYPE 3 —Cable to offset bus
- TYPE 5 —Bus to offset bus
- TYPE 6 —Mole to cable
- TYPE 7 —Bus to bus
- TYPE 8 —Mole to offset bus

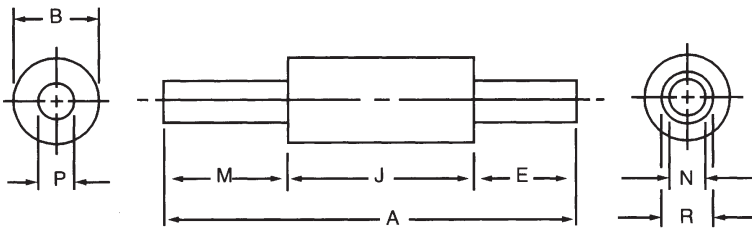


\* kcmil = MCM

# CP 600V Cable Protectors

## Type C6 – Dimensions (Mole to Cable - Copper)

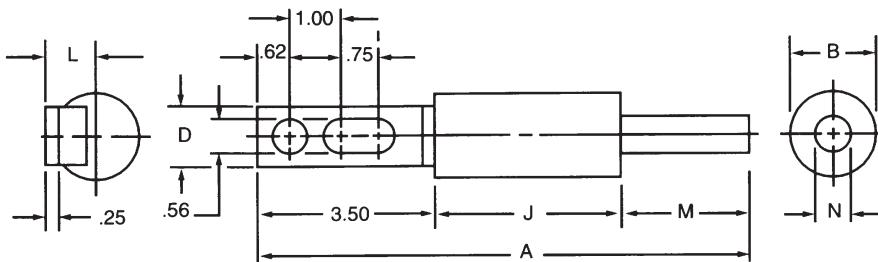
Catalog No.	Cable* Size	Dimensions - Inches (mm)							
		A	B	E	J	M	N	P	R
CP4/OC6	4/0	7.87 (200)	1.44 (37)	1.75 (44)	3.62 (92)	2.50 (64)	.55 (14)	.52 (13)	.68 (17)
CP250C6	250kcmil	8.00 (203)	1.44 (37)	1.88 (48)	3.62 (92)	2.50 (64)	.62 (16)	.58 (14)	.75 (19)
CP350C6	350kcmil	8.12 (206)	1.62 (41)	2.00 (51)	3.62 (92)	2.50 (64)	.71 (18)	.68 (17)	.88 (22)
CP500C6	500kcmil	9.38 (238)	1.88 (48)	2.88 (73)	3.62 (92)	2.88 (73)	.85 (22)	.81 (21)	1.05 (27)
CP750C6	750kcmil	9.51 (242)	2.50 (64)	2.88 (73)	3.75 (95)	2.88 (73)	1.06 (27)	1.00 (25)	1.32 (34)



Type C6

## Type C8 – Dimensions (Mole to Offset Bus - Copper)

Catalog No.	Cable* Size	Dimensions - Inches (mm)						
		A	B	D	J	L	M	N
CP4/OC8	4/0	9.62 (244)	1.44 (37)	1.12 (28)	3.62 (92)	.96 (24)	2.50 (64)	.52 (14)
CP250C8	250kcmil	9.62 (244)	1.44 (37)	1.12 (28)	3.62 (92)	.96 (24)	2.50 (64)	.58 (13)
CP350C8	350kcmil	9.62 (244)	1.62 (41)	1.12 (28)	3.62 (92)	.96 (24)	2.50 (64)	.68 (17)
CP500C8	500kcmil	10.00 (254)	1.88 (48)	1.62 (41)	3.62 (92)	1.19 (30)	2.88 (73)	.81 (21)
CP750C8	750kcmil	10.13 (257)	2.50 (64)	2.00 (51)	3.75 (95)	1.31 (33)	2.88 (73)	1.00 (25)



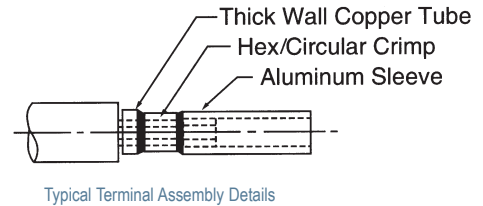
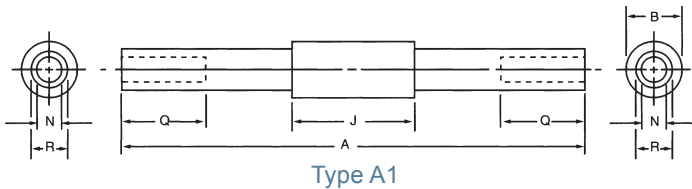
Type C8

\* kcmil = MCM

# CP 600V Cable Protectors

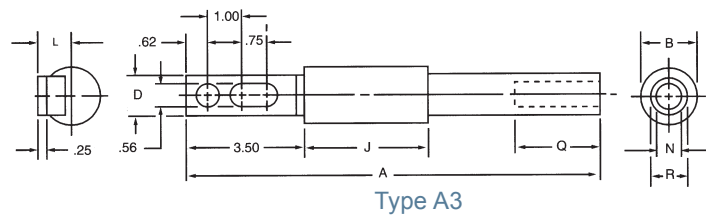
## Type A1 – Dimensions (Cable to Cable - Aluminum)

Catalog No.	Cable* Size	Dimensions - Inches (mm)					
		A	B	J	N	Q	R
CP4/0A1	4/0	13.88 (353)	1.44 (37)	3.62 (92)	.55 (14)	2.50 (64)	.85 (22)
CP250A1	250kcmil	13.88 (353)	1.44 (37)	3.62 (92)	.59 (15)	2.50 (64)	.94 (24)
CP350A1	350kcmil	13.88 (353)	1.62 (41)	3.62 (92)	.71 (18)	2.50 (64)	1.13 (29)
CP500A1	500kcmil	15.38 (391)	1.88 (48)	3.62 (92)	.85 (22)	2.88 (73)	1.33 (34)
CP750A1	750kcmil	15.50 (394)	2.50 (64)	3.75 (95)	1.06 (27)	2.88 (73)	1.62 (41)



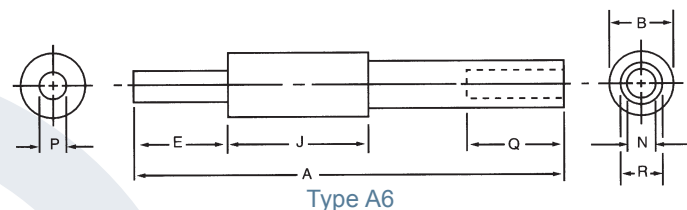
## Type A3 – Dimensions (Cable to Offset Bus - Aluminum)

Catalog No.	Cable* Size	Dimensions - Inches (mm)							
		A	B	D	J	L	N	Q	R
CP4/0A3	4/0	12.25(311)	1.44 (37)	1.12 (28)	3.62 (92)	.96 (24)	.55 (14)	2.50 (64)	.85 (22)
CP250A3	250kcmil	12.25 (311)	1.44 (37)	1.12 (28)	3.62 (92)	.96 (24)	.59 (15)	2.50 (64)	.94 (24)
CP350A3	350kcmil	12.25 (311)	1.62 (41)	1.12 (28)	3.62 (92)	.96 (24)	.71 (18)	2.50 (64)	1.13 (29)
CP500A3	500kcmil	13.00 (330)	1.88 (48)	1.62 (41)	3.62 (92)	1.19 (30)	.85 (22)	2.88 (73)	1.33 (34)
CP750A3	750kcmil	13.12 (333)	2.50 (64)	2.00 (51)	3.75 (95)	1.31 (33)	1.06 (27)	2.88 (73)	1.62 (41)



## Type A6 – Dimensions (Mole to Cable - Aluminum)

Catalog Number	Cable* Size	Dimensions - Inches (mm)							
		A	B	E	J	N	P	Q	R
CP4/0A6	4/0	11.25 (286)	1.44 (37)	2.50 (64)	3.62 (92)	.55 (14)	.52 (13)	2.50 (64)	.85 (22)
CP250A6	250kcmil	11.25 (286)	1.44 (37)	2.50 (64)	3.62 (92)	.59 (15)	.58 (14)	2.50 (64)	.94 (24)
CP350A6	350kcmil	11.25 (286)	1.62 (41)	2.50 (64)	3.62 (92)	.71 (18)	.68 (17)	2.50 (64)	1.13 (29)
CP500A6	500kcmil	12.38 (314)	1.88 (48)	2.88 (73)	3.62 (92)	.85 (22)	.81 (21)	2.88 (73)	1.33 (34)
CP750A6	750kcmil	12.50 (318)	2.50 (64)	2.88 (73)	3.75 (95)	1.06 (27)	1.00 (25)	2.88 (73)	1.59 (41)



Type 5 – Use Copper Cable Protectors Type C5  
Type 8 – Use Copper Cable Protectors Type C8

\* kcmil = MCM

Note: Inside surface of sleeve ends is coated with oxide inhibitor and capped.

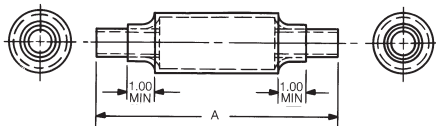
For the most current product performance data visit [ep-us.mersen.com](http://ep-us.mersen.com) and use catalog search.

# CP 600V Cable Protectors

## Copper Cable Protectors with Heat Shrinkable Tubing\*

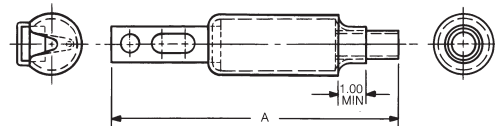
### Type C1, Copper Cable – Dimensions

Cable Size	A		Catalog No. Cable Protector With Heat Shrinkable Tubing
	Inches	(mm)	
4/0	7.12	(180)	CP4/0C1-HS
250kcmil	7.38	(188)	CP250C1-HS
350kcmil	7.62	(194)	CP350C1-HS
500kcmil	9.38	(238)	CP500C1-HS
750kcmil	9.51	(242)	CP750C1-HS



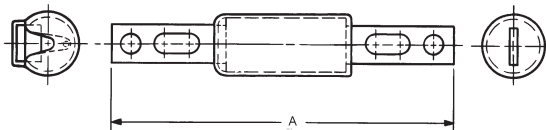
### Type C3, Copper Cable – Dimensions

Cable Size	A		Catalog No. Cable Protector With Heat Shrinkable Tubing
	Inches	(mm)	
4/0	8.87	(225)	CP4/0C3-HS
250kcmil	9.00	(229)	CP250C3-HS
350kcmil	9.12	(232)	CP350C3-HS
500kcmil	10.00	(254)	CP500C3-HS
750kcmil	10.13	(257)	CP750C3-HS



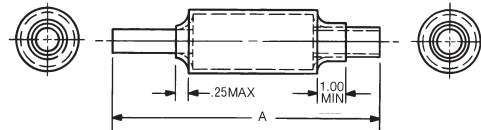
### Type C5, Copper Cable – Dimensions

Cable Size	A		Catalog No. Cable Protector With Heat Shrinkable Tubing
	Inches	(mm)	
4/0	10.37	(263)	CP4/0C5-HS
250kcmil	10.37	(263)	CP250C5-HS
350kcmil	10.37	(263)	CP350C5-HS
500kcmil	10.37	(263)	CP500C5-HS
750kcmil	10.50	(267)	CP750C5-HS



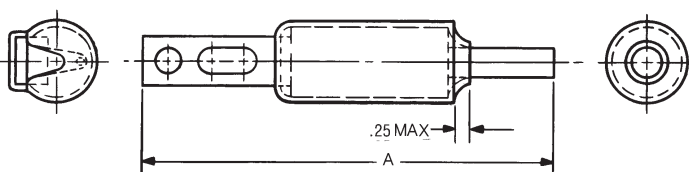
### Type C6, Copper Cable – Dimensions

Cable Size	A		Catalog No. Cable Protector With Heat Shrinkable Tubing
	Inches	(mm)	
4/0	7.87	(200)	CP4/0C6-HS
250kcmil	8.00	(203)	CP250C6-HS
350kcmil	8.12	(206)	CP350C6-HS
500kcmil	9.38	(238)	CP500C6-HS
750kcmil	9.51	(242)	CP750C6-HS



### Type C8, Copper Cable – Dimensions

Cable Size	A		Catalog No. Cable Protector With Heat Shrinkable Tubing
	Inches	(mm)	
4/0	9.62	(244)	CP4/0C8-HS
250kcmil	9.62	(244)	CP250C8-HS
350kcmil	9.62	(244)	CP350C8-HS
500kcmil	10.00	(254)	CP500C8-HS
750kcmil	10.13	(257)	CP750C8-HS



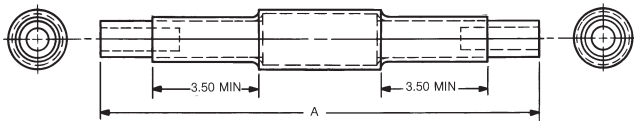
\* Transparent heat shrinkable tubing is supplied separately with -HS Catalog No. Maximum curing conditions: 5 seconds at 450°F.

# CP 600V Cable Protectors

## Aluminum Cable Protectors with Heat Shrinkable Tubing\*

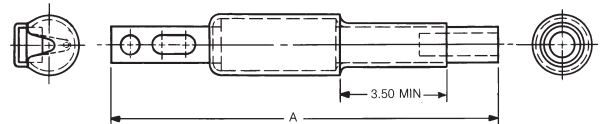
### Type A1, Aluminum Cable – Dimensions

Cable Size	A		Catalog No. Cable Protector With Heat Shrinkable Tubing
	Inches	(mm)	
4/0	13.88	(353)	CP4/0A1-HS
250kcmil	13.88	(353)	CP250A1-HS
350kcmil	13.88	(353)	CP350A1-HS
500kcmil	15.38	(391)	CP500A1-HS
750kcmil	15.50	(394)	CP750A1-HS



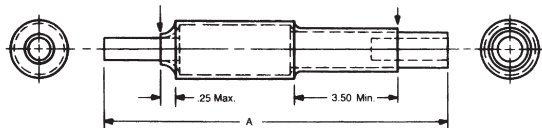
### Type A3, Aluminum Cable – Dimensions

Cable Size	A		Catalog No. Cable Protector With Heat Shrinkable Tubing
	Inches	(mm)	
250kcmil	12.25	(311)	CP250A3-HS
350kcmil	12.25	(311)	CP350A3-HS
4/0	12.25	(311)	CP4/0A3-HS
500kcmil	13.00	(330)	CP500A3-HS
750kcmil	13.12	(333)	CP750A3-HS



### Type A6, Aluminum Cable – Dimensions

Cable Size	A		Catalog No. Cable Protector With Heat Shrinkable Tubing
	Inches	(mm)	
4/0	11.25	(286)	CP4/0A6-HS
250kcmil	11.25	(286)	CP250A6-HS
350kcmil	11.25	(286)	CP350A6-HS
500kcmil	12.38	(314)	CP500A6-HS
750kcmil	12.50	(318)	CP750A6-HS



\* Transparent heat shrinkable tubing is supplied separately with -HS Catalog Numbers. Maximum curing conditions: 5 seconds at 450°F.

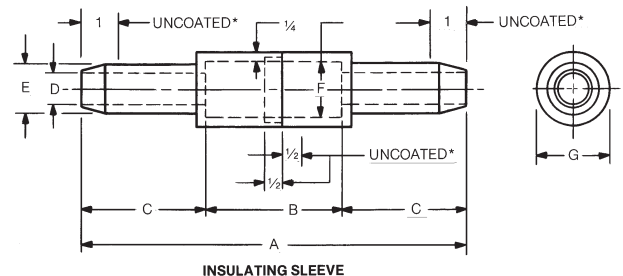
Type 5 – Use Copper Cable Protectors Type C5

Type 8 – Use Copper Cable Protectors Type C8

## Molded Rubber Insulating Sleeves\*\*

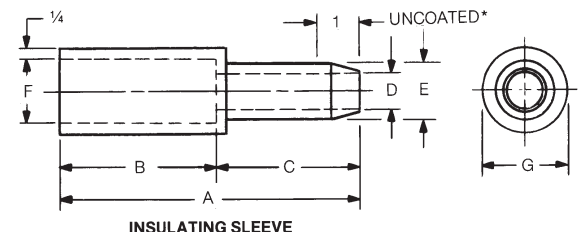
### For Type C1 Copper Cable Protectors – Dimensions

Catalog No.	Cable Size	Dimensions - Inches (mm)						
		A	B	C	D	E	F	G
4/0CCR	4/0	10.44 (265)	3.69 (94)	3.38 (86)	.83 (21)	1.33 (33)	1.50 (38)	2.00 (51)
500CCR	500kcmil	14.19 (360)	3.69 (94)	5.25 (133)	1.31 (33)	1.81 (46)	1.94 (49)	2.44 (62)



### For Type C3 Copper Cable Protectors – Dimensions

Catalog No.	Cable Size	Dimensions - Inches (mm)						
		A	B	C	D	E	F	G
4/0C3BR	4/0	7.06 (179)	3.69 (94)	3.38 (86)	.83 (21)	1.33 (33)	1.50 (38)	2.00 (51)
500C3BR	500kcmil	8.94 (227)	3.69 (94)	5.25 (133)	1.31 (33)	1.81 (46)	1.94 (49)	2.44 (62)



\*\* Molded rubber insulating sleeves are ordered by their own catalog numbers, and not as suffixes to the cable protector catalog numbers. Neoprene coated except as noted.

# CP 600V Cable Protectors

Mersen Cable Protectors have standard commercial splicing sleeve dimensions. Any crimping tool suitable for standard splicing sleeves, can be used. Follow crimping tool manufacturers instructions. Some crimping tool examples are shown below. It is recommended to use at least 2 crimps.

## Cable Protector Splicing Sleeve Dimensions

Cable Size (MCM or kcmil)	Copper		Aluminum	
	ID	OD	ID	OD
#2	0.31 (7.87)	0.42 (10.69)	-	-
1/0	0.39 (9.91)	0.52 (13.21)	-	-
2/0	0.44 (11.18)	0.56 (14.22)	-	-
4/0	0.55 (13.97)	0.68 (17.27)	0.54 (13.8)	0.84 (21.5)
250	0.62 (15.75)	0.75 (19.05)	0.59 (15.1)	0.94 (23.7)
350	0.71 (18.03)	0.88 (22.35)	0.71 (18.0)	1.13 (28.7)
400	0.75 (19.05)	0.94 (23.88)	-	-
500	0.82 (20.83)	1.05 (26.67)	0.84 (21.2)	1.31 (33.3)
600	0.94 (23.88)	1.07 (27.18)	0.92 (23.4)	1.44 (36.6)
750	1.06 (26.92)	1.32 (33.53)	1.03 (26.2)	1.59 (40.4)
1000	1.16 (29.46)	1.50 (38.1)	-	-

## Panduit - Copper

Cable Size (MCM or kcmil)	CT-920, CT-920CH, CT-930, CT-930CH, CT-2920	
	Die	Die Color & Die No.
#2	CD-920-2	Brown P33
1/0	CD-920-1/0	Pink P42
2/0	CD-920-2/0	Black P45
4/0	CD-920-4/0	Purple P54
250	CD-920-250*	Yellow P62
350	CD-920-350	Red P71
400	CD-920-400	Blue P76
500	CD-920-500	Brown P87
600	CD-920-600	Green P94
750	CD-920-750	Black P106

\* Copper Tap Connector Part Nos: HTCT250-8, HTCT250-2, HTCT250-250

\* Tap Connector Die Part No: CD-930H-250

## Panduit - Aluminum

Cable Size (MCM or kcmil)	CT-920, CT-920CH, CT-930, CT-930CH, CT-2920	
	Die	Die Color & Die No.
#2	CD-920-1/0	Pink P42
1/0	CD-920-3/0**	Tan P50 (Orange P50)
2/0	CD-920-4/0	Olive P54 (Purple 54)
4/0	CD-920-300	White P66
250	CD-920-350	Red P71
350	CD-920-500	Brown P87
400	CD-920-600	Green P94
500	CD-920-500A	Pink P99
600	CD-920-750	Black P106
750	-	-

\*\* Aluminum Tap Connector Part No: HTAP2-8-L (PANDUIT Die Color & Die No)

Note: Crimp Tools CT 2940 and CT940H may be used with adapter CD-940-DA

# CP 600V Cable Protectors

## Thomas & Betts - Copper

Cable Size (MCM or kcmil)	13642M (13400) Hydraulic Head		TBM14 (14 TON) Head		TBM15 (15 TON) Head		Head	
	Die Cat No.	Die Code	Die Cat No.	Die Code	Die Cat No.	Die Code	Die Cat No.	Die Code
#2	11735	33	15528	33	15528	33	11402	33
1/0	11737	42	15508	42	15508	42	11334	42
2/0	11738	45	15526	45	15526	45	11405	45
4/0	11740	54	15511	54	15511	54H	11407	54H
250	11771	62	15510-CK	62	15510-CK	62	297-31669-7	62
350	11743	71H	15514-CK	71H	15514-CK	71H	11363	71
400	11744	76H	15512	76H	15512	76H	11410	76
500	11746-TB	87H	15506	87H	15506	87H	11423	87
600	11748	99H	15536-CK	94H	15536-CK	94H	11364	94
750	-	-	15515-CK	106H	15515-CK	106H	74506	106
1000	-	-	-	-	15603	125H	11416	125

## Thomas & Betts - Aluminum

Cable Size (MCM or kcmil)	13642M (13400) Hydraulic Head		TBM14 Head		TBM15 Head		21940 (40 TON) Head	
	Die Cat No.	Die Code	Die Cat No.	Die Code	Die Cat No.	Die Code	Die Cat No.	Die Code
4/0	11742	66H	15534	66H	15534	66H	11409	66
250	11744	76H	15512	76H	15512	76H	11410	76
350	11747	94H	15536-CK	94H	15536-CK	94H	11364	94
400	-	-	-	-	-	-	-	-
500	11749	106H	15515-CK	106H	15515-CK	106H	74506	106
600	11751	112H	15504	115H	15609	112H	11426	112
750	-	-	-	-	15602	140H	11418	140

## Burndy - Copper

Cable Size (MCM or kcmil)	Burndy Hypress and Die Set			
	Y35	Y39	Y750	Y46*
#2	U2CRT	U2CRT	U2CRT	U2CRT
1/0	U25RT	U25RT	U25RT	U25RT
2/0	U26RT	U26RT	U26RT	U26RT
4/0	U28RT	U28RT	U28RT	U28RT
250	U29RT	U29RT	U29RT	U29RT
350	U31RT	U31RT	U31RT	U31RT
400	U32RT	U32RT	U32RT	U32RT
500	-	U34RT	U34RT	U34RT
600	-	U36RT	U36RT	U36RT
750	-	U39RT	U39RT	U39RT
1000	-	-	-	P44RT**

\* Requires PUADP-1 Adapter

\*\* PUADP-1 Adapter not required

Note: Use Burndy Dies with IlSCO ILC-15H crimp tool by installing adapter part no ILD-PADP

## Burndy - Aluminum

Cable Size (MCM or kcmil)	Burndy Hypress and Die Set	
	Y35	Y39
#2	-	-
1/0	-	-
2/0	U26ART	U26ART
4/0	U28ART	U28ART
250	U29ART	U29ART
350	U31ART	U31ART
400	U32ART	U32ART
500	-	U34ART
600	-	U36ART
750	-	U39ART-2
1000	-	-

\* Requires PUADP-1 Adapter

\*\* PUADP-1 Adapter not required