

LARGE 68000-69000 SERIES/POWER DISTRIBUTION BLOCKS

Sizes, Ratings, Catalog Numbers – Large Series 68000 and 69000

Ampere rating based on NEC Table 310-16 for 75° copper wire.



PRIMARY		SECONDARY		AMPERE RATING	CATALOG NUMBER								SHORT CIRCUIT CURRENT RATING
WIRE RANGE AWG/kcmil	OPENINGS PER POLE	WIRE RANGE AWG/kcmil	OPENINGS PER POLE		ALUMINUM (90° C Cu/Al wire)				COPPER (75° C Cu wire only)				
					ADDER	1 POLE	2 POLE	3 POLE	ADDER	1 POLE	2 POLE	3 POLE	
Box to Box													
350-#6	1	2/0-#14 #4-14 #10-14*	6 12 20	310	69170 69150 69630**	69171 69151 69631**	69172 69152 69632**	69173 69153 69633**	68170 68150 68630**	68171 68151 68631**	68172 68152 68632**	68173 68153 68633**	• •
500-#4	1	500-#4 350-#6	1 2	380	69050 69060	69051 69061	69052 69062	69053 69063	68050 68060	68051 68061	68052 68062	68053 68063	• •
		4/0-#6 4/0-#10	4 4		69510** -	69511** -	69512** -	69513** -	- 68510**	- 68511**	- 68512**	- 68513**	
		2/0-#14 #4-14	6 12		69070 69080	69071 69081	69072 69082	69073 69083	68070 68080	68071 68081	68072 68082	68073 68083	• •
600-#2	1	600-#2	1	420	69640	69641	69642	69643	68640	68641	68642	68643	•
1000-250	1	1000-250 500-#4 350-#6 4/0-#6	1 2 2 4	545	69000 69010 69020 69300**	69001 69011 69021 69301**	69002 69012 69022 69302**	69003 69013 69023 69303**	68000 68010 68020 -	68001 68011 68021 -	68002 68012 68022 -	68003 68013 68023 -	• • •
		4/0-#10 2/0-#14 #2-14 #4-14	4 6 10 12		- 69030 69530** 69040	- 69031 69531** 69041	- 69032 69532** 69042	- 69033 69533** 69043	68300** 68030 68530** 68040	68301** 68031 68531** 68041	68302** 68032 68532** 68042	68303** 68033 68533** 68043	• •
#4-14	2	#4-14	12	170	69180	69181	69182	69183	68180	68181	68182	68183	•
2/0-#14	2	#4-14 #10-14*	12 20	350	69160 69600	69161 69601	69162 69602	69163 69603	68160 68600	68161 68601	68162 68602	68163 68603	• •
350-#6	2	350-#6 4/0-#6 4/0-#10 2/0-#14 #4-14	2 4 4 6 12	620	69120 69320** -	69121 69321** -	69122 69322** -	69123 69323** -	68120 - 68320**	68121 - 68321**	68122 - 68322**	68123 - 68323**	• • •
		69130 69140	69131 69141		69132 69142	69133 69143	68130 68140	68131 68141	68132 68142	68133 68143			
500-#4	2	500-#4 4/0-#6 4/0-#10 2/0-#14 #4-14	2 4 4 6 12	760	69090 69310 -	69091 69311 -	69092 69312 -	69093 69313 -	68090 - 68310	68091 - 68311	68092 - 68312	68093 - 68313	• • • •
		69100 69110	69101 69111		69102 69112	69103 69113	68100 68110	68101 68111	68102 68112	68103 68113			
600-#2	2	600-#2 #14-4 & 3/0-#10	2 4	840	69650 69540	69651 69541	69652 69542	69653 69543	- 68540**	- 68541**	- 68542**	- 68543**	
1000-250	2	500-#4	4	1090	-	69561**†	-	-	-	68561**†	-	-	
600-#2	3	600-#2	3	1260	-	69331**†	-	-	-	-	-	-	
500-#4	4	#6-14 #6-14 & 2/0-#14	30 22 4	1520	-	69191**†	-	-	-	68191**†	-	-	
					-	69521**†	-	-	-	68521**†	-	-	
600-#2	4	600-#2	4	1680	-	69341**†	-	-	-	-	-	-	
500-#4	3	4/0-#10	6	1140	-	-	-	-	-	800011**†	-	-	
500-#4	7	500-#4	7	2660	-	-	-	-	-	800061***	-	-	
500-#4	3	2/0-#14	8	1140	-	900061**†	-	-	-	-	-	-	
500-#4	4	500-#4	4	1520	-	900071**†	-	-	-	800031**†	-	-	
500-#4	4	2/0-#12	6	1050	-	900121†	-	-	-	800121**†	-	-	

*Copper wire only

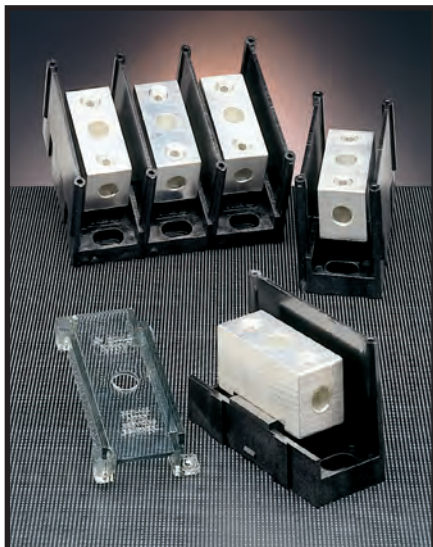
**Not UL Recognized or CSA Certified

***These pole blocks are triple width (7.81")

†These 1 pole blocks are double width (5.31")

• Short Circuit current rating with correctly sized fuse 100kA except adder block. Contact Ferraz technical services for fuse type and maximum ampere required.

62000-69000 SERIES POWER DISTRIBUTION BLOCKS



VERSATILE POWER DISTRIBUTION BLOCKS FOR CABLE TERMINATIONS

Ferraz Shawmut Power Distribution Blocks afford a safe, convenient way of splicing cables, splitting primary power into a variety of secondary circuits or providing a fixed junction tap-off point. Power block options include single or dual primary connections with up to 30 secondary connections.

Features/Benefits

- **Adder Poles**
All series have optional adder poles which snap onto the 1, 2 or 3- pole blocks and lock together to form as many poles as required. Adder poles with a variety of terminations can be combined to match special wire size combinations.
- **Wire Connectors**
Standard aluminum box connectors accommodate aluminum or copper wire, 1 conductor per opening. Standard copper box connections are for copper wire only, 1 conductor per opening. Connectors are all 1 piece and tin plated.
- **Insulators**
Insulators are virtually unbreakable, glass-filled polycarbonate on all series. "See-Through" Safety Covers are available which give greater safety and provide Service Entrance ratings for large and intermediate series blocks.

Ratings

- Ampere ratings from 90 to 2660
- 600V rated
- Short Circuit current rating 100kA with proper fuse. Contact technical services for sizing table.

Approvals

- Most sizes are UL Recognized Component - Guide XCFR2, File E73571
- Most sizes are CSA Certified:
Series 62, 63, 66, 68 - Class 6228, File 69363
Series 67, 69 - Class 3211, File 15469

HIGHLIGHTS:

- **Mini -**
62000 and 63000 Series
- **Intermediate -**
66000 and 67000 Series
- **Large -**
68000 and 69000 Series

APPLICATIONS:

- Box, stud and quick-connect terminations for copper and/or aluminum cables

LARGE 68000-69000 SERIES/POWER DISTRIBUTION BLOCKS

Sizes, Ratings, Catalog Numbers – Large Series 68000 and 69000 (continued)

Ampere rating based on NEC Table 310-16 for 75° copper wire.

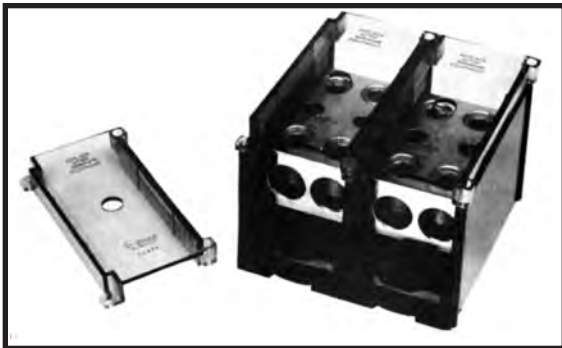


PRIMARY		SECONDARY		AMPERE RATING	CATALOG NUMBER							
WIRE RANGE AWG/kcmil or STUD SIZE*	OPENINGS or STUDS PER POLE	WIRE RANGE AWG/kcmil or STUD SIZE	OPENINGS or STUDS PER POLE		ALUMINUM (90° C Cu/Al wire)				COPPER (75° C Cu wire only)			
					ADDER	1 POLE	2 POLE	3 POLE	ADDER	1 POLE	2 POLE	3 POLE
Box to Stud												
500-#4	1	3/8-16 x 1	1	Cu 380	69210	69211	69212	69213	68210	68211	68212	68213
500-#4	2	3/8-16 x 1	2	Al 310	69270	69271	69272	69273	68270	68271	68272	68273
500-#4	2	3/8-16 x 1	2	Cu 380	-	69221	69222	69223	-	68221	-	-
1000-250	1	1/2-13 x 1-3/16	1	Cu 545	69280	69281	69282	69283	68280	68281	68282	68283
		3/8-16 x 1	2	Al 445	69240	69241	69242	69243	68240	68241	68242	68243
1/2-13 x 1	1	2/0-#14	4	545	69260	69261	69262	69263	-	-	-	-
			12	545	69290	69291	69292	69293	-	-	-	-
			4	1000	-	-	-	-	68260	68261	68262	68263
			12	1000	-	-	-	-	68290	68291	68292	68293
500-#4	4	3/8-16 x 1	4	1520	-	900091†	-	-	-	-	-	
Stud to Stud												
1/2-13 x 1-3/8	1	1/2-13 x 1-3/8	1	400	-	-	-	-	68200**	68201**	68202**	68203**

*Stud type connectors are furnished with nuts and washers. Recommended stud torque: (3/8-16) - 228 in.-lbs; (1/2-13) - 496 in.-lbs.

**Not UL Recognized or CSA Certified

† These 1 pole blocks are double width (5.31")



08590 cover and 69092 PDB with 2-08590 covers installed

SAFETY COVER - Catalog number 08590

Polycarbonate safety cover provides dead-front protection to 68000 and 69000 series power distribution blocks. One cover is needed for each pole (1-pole block requires 1 cover, 3-pole requires 3 covers, etc.) Each cover has a test prod hole in the center for circuit checking and each is marked with the reminder "REPLACE AFTER SERVICING EQUIPMENT". Mounting screws are supplied with cover.

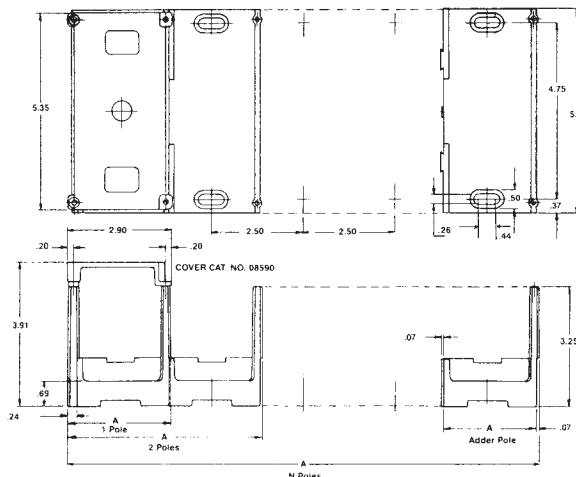
To order, simply determine the total number of poles to be protected and specify the same number of 08590 safety covers.

Recommended mounting screws for all 68000-69000 series: 1/4" (.250 dia.).

For double wide blocks use 08592W safety cover.

END BARRIER - Catalog number U09911

Polycarbonate end barriers snap on to PDB Adder blocks to form 1-pole blocks. Use one barrier per block.



Dimensions – 68000 and 69000 Series PDB

NUMBER OF POLES	DIMENSION A (Inches)
ADDER	2.50
1	2.81
2	5.31
3	7.81
N	(2.50 x N) + .31

Example for 10 poles:

$$A = (2.50 \times 10) + .31 = 25.31$$