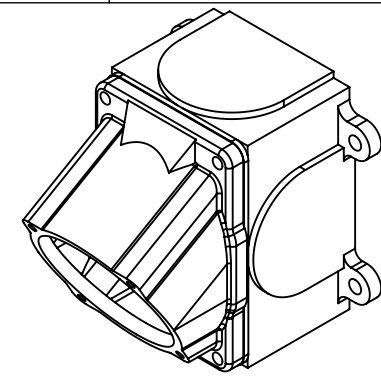
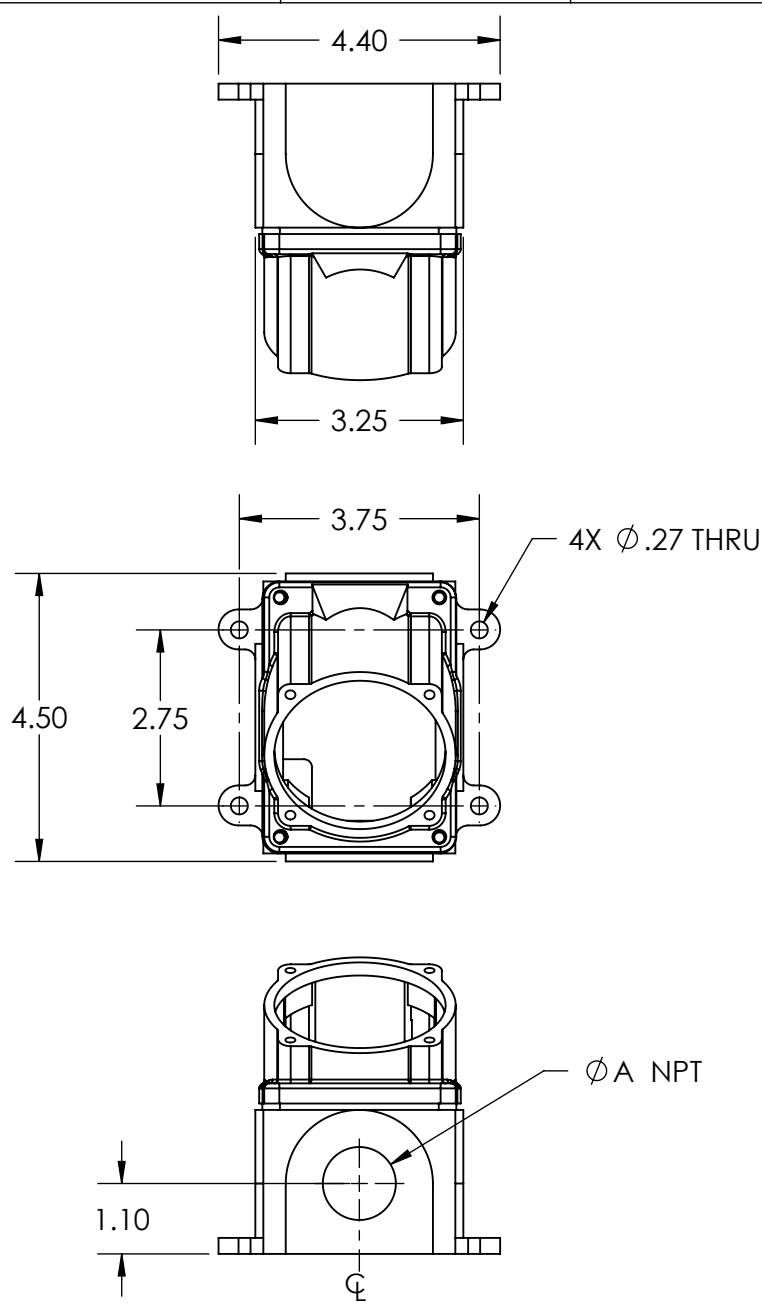


This drawing is the property of MELTRIC Corporation, Franklin (Milwaukee) Wisconsin, USA. Any unauthorized copying of this drawing by any means, ENG/RD/06 REV: 20 ISSUED DATE: 11/15/11 or disclosure of its contents to any person not authorized by MELTRIC Corporation or its agents to receive it, is strictly prohibited.



PART NUMBER	NPT "A"
31-3A053-080-12	1/2" NPT
31-3A053-080-34	3/4" NPT
31-3A053-080-1	1" NPT
31-3A053-080-114	1-1/4" NPT

TOLERANCES UNLESS OTHERWISE SPECIFIED			
MACHINED SURFACES $\sqrt{125 \text{ MAX}}$	ENGLISH 0.X ± 0.05 0.XX ± 0.01 0.XXX ± 0.005	DRAWN	APPROVED
GROUND SURFACES $\sqrt{32 \text{ MAX}}$		DATE:	SCALE
ANGLE TOLERANCE $\pm 1^\circ$		NTS	MATERIAL:
REMOVE BURRS & SHARP EDGES TO .015 MAX.		PAINTED METAL & BLUE POLY	
DIMENSIONS SHOWN IN OVALS ARE INSPECTION DIMENSIONS.		SHEET: 1 OF 1	PART NUMBER 31-3A053-080-xxx
			REVISION