



Features and Ratings	p. 141
DR30	p. 143
DR50	p. 145
DR100	p. 147
DR150	p. 149
DR 250	p. 151
Spare parts	p. 153
Dimensions	p. 155



Robust construction and high amperage capabilities

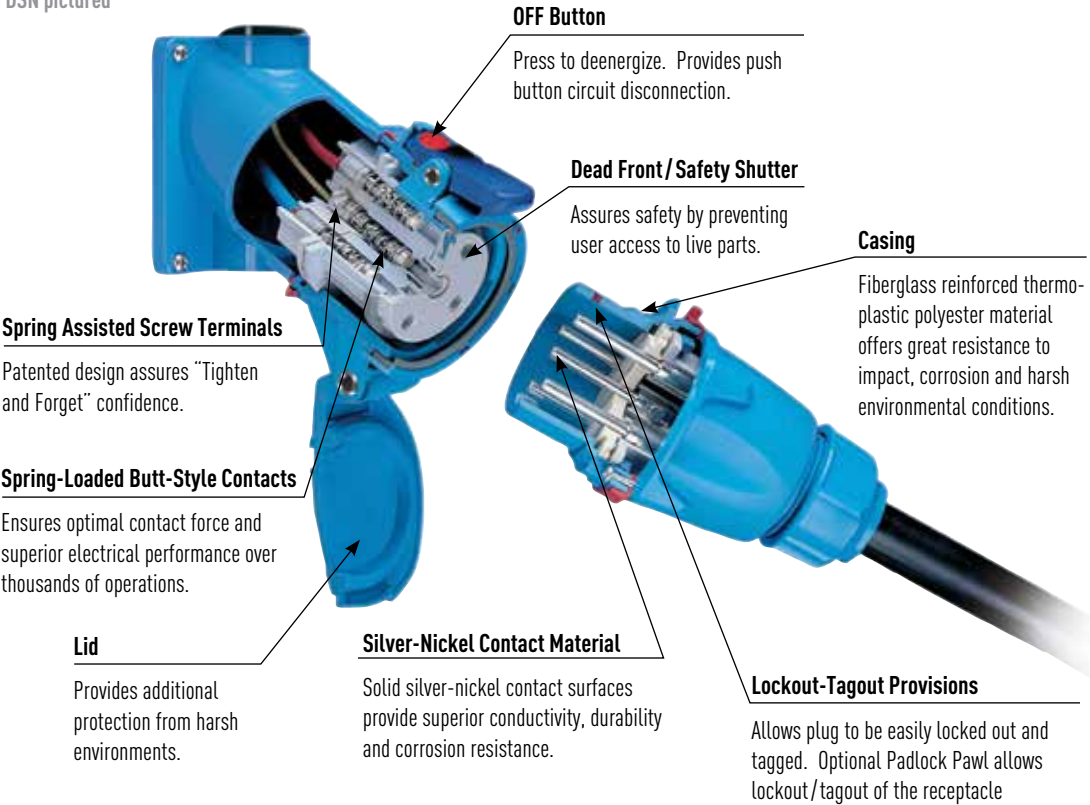
DR series plugs and receptacles provide safe, economical and robust connections for applications up to 250A. Some DR models are non-current interrupting rated, while others are suitable for current interruption on resistive loads (see table on next page). The DR's spring-loaded, silver-nickel butt contacts and dead front construction provide more consistent and reliable connections and significant improvements in operator safety compared to competitive devices.

Main Advantages

- ▶ High amperage capacity
- ▶ Up to 6 auxiliary contacts
- ▶ Robust Metal or Poly construction

Product Features

DSN pictured



General Ratings

Amperage	30 to 250A
Voltage	600 VAC
Frequency	50-400 Hz
Short-Circuit (Withstand)	10kA to 100kA*
Environmental	Type 3R, IP54/IP55**
Temperature	min -40°F/max 140°F

* DR30, 50 and 100 are 100kA; DR150 and 250 are 10kA
Testing was performed with RK1 current limiting fuses sized at at least 100% of the devices ampacity ratings.

** IP54 rated when receptacle and plug are mated, when not mated receptacle alone is IP55 rated provided that the lid is latched closed.

Listings

Category	UL	CSA	IEC
Plugs and Receptacles	UL 1682	C22.2 No. 182.1	60309-1

CE ratings available upon request

Operating Instructions



When the plug and receptacle are latched together, the circuit is connected.



Pressing the pawl causes the DR to break the circuit. The plug is ejected to its rest position; its contacts are now dead.



Rotating the 'dead' plug 30° counterclockwise closes the safety shutter and frees the plug to be withdrawn from the receptacle.



The plug and the receptacle are separated. The safety shutter prevents access to live parts.

5 To reconnect, insert plug into receptacle, twist slightly, and apply insertion force.

DR30

DR – 30A

Standard Duty Plugs & Receptacles

Ratings

- Voltage**
600 VAC
- Current Interruption Capability**
Not for current interrupting

For Switch-Rated devices, see DS & DSN sections.

- Short Circuit Rating**
100kA
Testing was performed with RK1 current limiting fuses sized at least 100% of the devices ampacity rating.

- Environmental Ratings**
Type 3R, IP54/IP55*

* IP54 when the plug & receptacle are mated. IP55 on the receptacle alone when the lid is latched closed.

- Temperature Range**
Min -40°F/Max 140°F
See pg 220 for temps below -15°F.

- Wiring Capacity**
Min 14 AWG Max 8 AWG
Aux Contacts - Max 14 AWG
* Based on THHN wire sizes

- Listings**
UL, CSA, IEC, CE*

* Contact Customer Service

Receptacle (female)



Don't forget to add installation accessories to your order



Voltage	Polarity	Part # Poly
120/208V	3P+N+G	31-14237-K16
125V	1P+N+G	31-14175-K07
125/250V	2P+N+G	31-14176-K07
208V	2P+G	31-14232-K16
208V	3P+G	31-14233-K16
250V	2P+G	31-14172-K07
250V	3P+G	31-14173-K07
277V	1P+N+G	31-14245-K04
277/480V	3P+N+G	31-14247-K04
347/600V	3P+N+G	31-14187-K14
480V	2P+G	31-14242-K04
480V	3P+G	31-14243-K04
600V	2P+G	31-14182-K14
600V	3P+G	31-14183-K14

Inlet (male)



Voltage	Polarity	Part # Poly
120/208V	3P+N+G	31-18237-K16
125V	1P+N+G	31-18175-K07
125/250V	2P+N+G	31-18176-K07
208V	2P+G	31-18232-K16
208V	3P+G	31-18233-K16
250V	2P+G	31-18172-K07
250V	3P+G	31-18173-K07
277V	1P+N+G	31-18245-K04
277/480V	3P+N+G	31-18247-K04
347/600V	3P+N+G	31-18187-K14
480V	2P+G	31-18242-K04
480V	3P+G	31-18243-K04
600V	2P+G	31-18182-K14
600V	3P+G	31-18183-K14

Other voltage configurations are available – contact customer service at 800.433.7642.

Main Options



Auxiliary Contacts



Mushroom Pawl



Padlock Pawl



Closed Lid Configuration

Recommended for cord applications to keep lid tucked in to avoid damage.

Receptacle Options

Part

With 2 Auxiliary/Pilot Contacts	Recept # - 972
Type 4X & closed lid configuration	Recept # - 4X
Mushroom Pawl	Recept # - 375
Padlock Pawl	Recept # - 843
Padlockable Mushroom Pawl	Recept # -375-843
Locking Mushroom Pawl	Recept # - 845
Metal Pawl (on poly receptacle)	Recept # - 824
Closed Lid Configuration	Recept # - NC
With Auxiliary Switch	Recept # - 270*

Notes: * Not UL/CSA Listed

Inlet Options

Part

With 2 Auxiliary/Pilot contacts	Inlet # - 972
Type 4X Watertightness	Inlet # - 4X
With no lockout hole	Inlet # - A155
For Auxiliary Switch*	Inlet # - NNF

Notes: * Order inlet with P+N+G configuration and receptacle with P+G configuration

DR30 Order Example:

To order 2 auxiliary/pilot contacts on an inlet and receptacle add **-972** to the part numbers.

DR30 Inlet 3P+G = 31-18243-K04-**972**

DR30 Receptacle 3P+G = 31-14243-K04-**972**

Appropriate accessory part numbers must also be included on the order.

Installation Accessories

Handles



Not NEMA 3R

NPT	Poly Handle	Cable Range	Nylon Handle	Neoprene Handle	Poly Handle w/Clamp & Bushing
1/2"	1PH12	.20 - .83	FH111	-	-
3/4"	1PH34	.32 - .88	-	31-111	-
1"	1PH1	.750 - .875	-	-	1PM514
1 1/4"	1PH114	.875 - 1.000	-	-	1PM516
		1.000 - 1.125	-	-	1PM518
		1.125 - 1.250	-	-	1PM520
		1.250 - 1.375	-	-	1PM522

- Notes:**
- Finger draw plates are recommended for easier connector closure on cord to cord assemblies.
 - For available cord grips, see pgs 193-194.

Angles



Nylon 30° Angle	Metal 30° Angle	Metal Angle FS/FD Box 30°	Metal Straight Adapter
MP2	MA2	MAFS2	MS2

NPT Guidelines

Cable Range	NPT
.312 - .625	1/2"
.438 - .812	3/4"
.660 - 1.000	1"
.875 - 1.375	1 1/4"

NPT sizes are determined by the cable diameter and third party cord grip.

Junction Boxes



NPT	Metal Box	Metal Box with Nylon Angle	Poly* Conduit Entry	Poly 70°*** Wall Box
1/2"	MB312	31-1A053-080-12	MC212	51-BA058
3/4"	MB334	31-1A053-080-34	MC234	51-BA058
1"	MB31	31-1A053-080-1	-	51-BA058
1 1/4"	MB3114	31-1A053-080-114	-	51-BA058

- * For poly devices only
 ** 70° boxes are not drilled. Contact customer service if factory drilling is required.
 * Interior volume with receptacle installed.

Miscellaneous Accessories



* Set of Two (2)



For Male Devices Only



For Male Devices Only



Finger Drawplates	Protective Cap	Padlockable Cap Poly	Inlet Spring-loaded Cap
FDP2	31-1A126	DS1PC	31-1A226

- * Recommended for cord to cord assembly applications, for easier connector closure

Order Example

A typical order should include an inlet part number, a receptacle part number **AND** the matching handles, angles or other required accessories.



Male Inlet with Handle (Plug)
31-18243-K04 + FH111



Female Receptacle with Angle Adapter
31-14243-K04 + MP2

DR50

DR – 50A

Standard Duty Plugs & Receptacles

Ratings

- Voltage**
600 VAC
- Current Interruption Capability**
For current interrupting up to 250 VAC

For Switch-Rated devices, see DS & DSN sections.

- Short Circuit Rating**
100kA
Testing was performed with RK1 current limiting fuses sized at at least 100% of the devices ampacity rating.

- Environmental Ratings**
Type 3R, IP54/IP55*

* IP54 when the plug & receptacle are mated. IP55 on the receptacle alone when the lid is latched closed.

- Temperature Range**
Min -40°F/Max 140°F
See pg 220 for temps below -15°F.

- Wiring Capacity**
Min 14 AWG Max 6 AWG
Aux Contacts - Max 14 AWG

* Based on THHN wire sizes

- Listings**
UL, CSA, IEC, CE*

* Contact Customer Service

Receptacle (female)



Don't forget to add installation accessories to your order



Voltage	Polarity	Part # Poly
120/208V	3P+N+G	31-34237-K16
125V	1P+N+G	31-34175-K07
125/250V	2P+N+G	31-34176-K07
208V	2P+G	31-34232-K16
208V	3P+G	31-34233-K16
250V	2P+G	31-34172-K07
250V	3P+G	31-34173-K07
277V	1P+N+G	31-34245-K04
277/480V	3P+N+G	31-34247-K04
347/600V	3P+N+G	31-34187-K14
480V	2P+G	31-34242-K04
480V	3P+G	31-34243-K04
600V	2P+G	31-34182-K14
600V	3P+G	31-34183-K14

Inlet (male)



Voltage	Polarity	Part # Poly
120/208V	3P+N+G	31-38237-K16
125V	1P+N+G	31-38175-K07
125/250V	2P+N+G	31-38176-K07
208V	2P+G	31-38232-K16
208V	3P+G	31-38233-K16
250V	2P+G	31-38172-K07
250V	3P+G	31-38173-K07
277V	1P+N+G	31-38245-K04
277/480V	3P+N+G	31-38247-K04
347/600V	3P+N+G	31-38187-K14
480V	2P+G	31-38242-K04
480V	3P+G	31-38243-K04
600V	2P+G	31-38182-K14
600V	3P+G	31-38183-K14

Other voltage configurations are available – contact customer service at 800.433.7642.

Main Options



Auxiliary Contacts



Mushroom Pawl



Padlock Pawl



Closed Lid Configuration

Recommended for cord applications to keep lid tucked in to avoid damage.

Receptacle Options

Part

With 2 Auxiliary/Pilot Contacts	Recept # - 972
With 3 Auxiliary/Pilot Contacts	Recept # - 973*
With 4 Auxiliary/Pilot Contacts	Recept # - 974*
Type 4X & closed lid configuration	Recept # - 4X
Mushroom Pawl	Recept # - 375
Padlock Pawl	Recept # - 843
Padlockable Mushroom Pawl	Recept # - 375-843
Locking Mushroom Pawl	Recept # - 845
Metal Pawl (on poly receptacle)	Recept # - 824
Closed Lid Configuration	Recept # - NC
With Auxiliary Switch	Recept # - 270*

Inlet Options

Part

With 2 Auxiliary/Pilot Contacts	Inlet # - 972
With 3 Auxiliary/Pilot Contacts	Inlet # - 973*
With 4 Auxiliary/Pilot Contacts	Inlet # - 974*
Type 4X Watertightness	Inlet # - 4X
With No Lockout Hole	Inlet # - A155
For Auxiliary Switch*	Inlet # - NNF

Notes: * Order inlet with P+N+G configuration and receptacle with P+G configuration

DR50 Order Example:

To order 2 auxiliary/pilot contacts on an inlet and receptacle add **-972** to the part numbers.

DR50 Inlet 3P+G = 31-38243-K04-**972**

DR50 Receptacle 3P+G = 31-34243-K04-**972**

Appropriate accessory part numbers must also be included on the order.

Notes: * Not UL/CSA Listed

See pgs 197-206 for detailed information on these options

Installation Accessories

Handles



Not NEMA 3R

Makes connector closures easier

NPT	Poly Handle	Cable Range	Nylon Handle	Neoprene Handle	Poly Handle w/Clamp & Bushing	Poly Handle w/built in Draw Grip
1/2"	3PH12	.32 - 1.25	-	-	-	FH311-473
3/4"	3PH34	.38 - 1.12	-	31-311	-	-
1"	3PH1	.39 - 1.18	FH311	-	-	-
1 1/4"	3PH114	.750 - .875	-	-	3PM514	-
		.875 - 1.000	-	-	3PM516	-
		1.000 - 1.125	-	-	3PM518	-
		1.125 - 1.250	-	-	3PM520	-
		1.250 - 1.375	-	-	3PM522	-

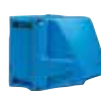
- Notes:**
- For available cord grips, see pgs 193-194.
 - For a guideline of NPT sizes based on cable ranges, see DR30 on pg 144.

Angles



Nylon 30° Angle	Metal 30° Angle	Metal 70° Angle	Metal Angle FS/FD Box 30°	Metal Straight Adapter
MP3	MA3	89-3A027	MAFS3	MS3

Junction Boxes



29.6 in³

13.5 in³

185.7 in³

NPT	Metal Box	Metal Box with Nylon Angle	Poly* Conduit Entry	Poly 70°** Wall Box
1/2"	MB312	31-3A053-080-12	-	51-CA058
3/4"	MB334	31-3A053-080-34	MC334	51-CA058
1"	MB31	31-3A053-080-1	MC31	51-CA058
1 1/4"	MB3114	31-3A053-080-114	-	51-CA058

* For poly devices only

** 70° boxes are not drilled. Contact customer service if factory drilling is required.

* Interior volume with receptacle installed.

Miscellaneous Accessories



* Set of Two (2)



For Male Devices Only



For Male Devices Only



Finger Drawplates	Protective Cap	Padlockable Cap Poly	Inlet Spring-Loaded Cap
FDP3	31-3A126	DS3PC	31-3A226

Accessory Spotlight

Finger Drawplates



Finger drawplates are recommended for easier connector closure on cord to cord assemblies.

Order Example

A typical order should include an inlet part number, a receptacle part number **AND** the matching handles, angles or other required accessories.



Male Inlet with Handle (Plug)
31-38243-K04 + FH311



Female Receptacle with Angle Adapter
31-34243-K04 + MP3

DR100



DR – 100A Standard Duty Plugs & Receptacles

Ratings

- **Voltage**
600 VAC
- **Current Interruption Capability**
For current interrupting up to 600 VAC
For Switch-Rated devices, see DS & DSN sections.
- **Short Circuit Rating**
100kA
Testing was performed with RK1 current limiting fuses sized at at least 100% of the devices ampacity rating.

- **Environmental Ratings**
Type 3R, IP54/IP55*

* IP54 when the plug & receptacle are mated. IP55 on the receptacle alone when the lid is latched closed.

- **Temperature Range**
Min -40°F/Max 140°F
See pg 220 for temps below -15°F.

- **Wiring Capacity**
Min 10 AWG Max 2 AWG
Aux Contacts - Max 14 AWG
* Based on THHN wire sizes

- **Listings**
UL, CSA, IEC, CE*
* Contact Customer Service

Receptacle (female)



Don't forget to add installation accessories to your order



Voltage	Polarity	Part #	
		Poly	Metal
120/208V	3P+N+G	31-64237-K16	39-64237-K16
125V	1P+N+G	31-64175-K07	39-64175-K07
125/250V	2P+N+G	31-64176-K07	39-64176-K07
208V	2P+G	31-64232-K16	39-64232-K16
208V	3P+G	31-64233-K16	39-64233-K16
250V	2P+G	31-64172-K07	39-64172-K07
250V	3P+G	31-64173-K07	39-64173-K07
277V	1P+N+G	31-64245-K04	39-64245-K04
277/480V	3P+N+G	31-64247-K04	39-64247-K04
347/600V	3P+N+G	31-64187-K14	39-64187-K14
480V	2P+G	31-64242-K04	39-64242-K04
480V	3P+G	31-64243-K04	39-64243-K04
600V	2P+G	31-64182-K14	39-64182-K14
600V	3P+G	31-64183-K14	39-64183-K14

Inlet (male)



Voltage	Polarity	Part #	
		Poly	Metal
120/208V	3P+N+G	31-68237-K16	39-68237-K16
125V	1P+N+G	31-68175-K07	39-68175-K07
125/250V	2P+N+G	31-68176-K07	39-68176-K07
208V	2P+G	31-68232-K16	39-68232-K16
208V	3P+G	31-68233-K16	39-68233-K16
250V	2P+G	31-68172-K07	39-68172-K07
250V	3P+G	31-68173-K07	39-68173-K07
277V	1P+N+G	31-68245-K04	39-68245-K04
277/480V	3P+N+G	31-68247-K04	39-68247-K04
347/600V	3P+N+G	31-68187-K14	39-68187-K14
480V	2P+G	31-68242-K04	39-68242-K04
480V	3P+G	31-68243-K04	39-68243-K04
600V	2P+G	31-68182-K14	39-68182-K14
600V	3P+G	31-68183-K14	39-68183-K14

Other voltage configurations are available – contact customer service at 800.433.7642.

Main Options



Auxiliary Contacts



Mushroom Pawl



Padlock Pawl



Closed Lid Configuration

Recommended for cord applications to keep lid tucked in to avoid damage.



See pgs 197-206 for detailed information on these options

Receptacle Options

Part

With 2 Auxiliary/Pilot Contacts	Recept # - 972
With 3 Auxiliary/Pilot Contacts	Recept # - 263*
Type 4X & closed lid configuration	Recept # - 4X
Mushroom Pawl	Recept # - 375
Padlock Pawl	Recept # - 843
Padlockable Mushroom Pawl	Recept # -375-843
Locking Mushroom Pawl	Recept # - 845
Metal Pawl (on poly receptacle)	Recept # - 824
Closed Lid Configuration	Recept # - NC
With Auxiliary Switch	Recept # - 270**

Notes: + Not available for metal devices, not UL/CSA listed
++ Not UL/CSA listed

Inlet Options

Part

With 2 Auxiliary/Pilot Contacts	Inlet # - 972
With 3 Auxiliary/Pilot Contacts	Inlet # - 263*
Type 4X Watertightness	Inlet # - 4X
With No Lockout Hole	Inlet # - A155
For Auxiliary Switch*	Inlet # - NNF

Notes: * Order inlet with P+N+G configuration and receptacle with P+G configuration

DR100 Order Example:

To order 2 auxiliary/pilot contacts on an inlet and receptacle add -972 to the part numbers.

DR100 Inlet 3P+G = 31-68243-K04-**972**

DR100 Receptacle 3P+G = 31-64243-K04-**972**

Appropriate accessory part numbers must also be included on the order.

Installation Accessories

Unless indicated otherwise, accessories can be used with either poly or metal plugs and receptacles

Handles



Not NEMA 3R



Makes connector closures easier

NPT	Poly Handle	Metal* Handle	Cable Range	Nylon Handle	Neoprene Handle	Poly Handle w/Clamp & Bushing	Poly Handle w/built in Draw Grip
1/2"	6PH12	6H12	.50 - 1.25	-	31-611	-	-
3/4"	6PH34	6H34	.51 - 1.38	FH611	-	-	FH611-473
1"	6PH1	6H1	1.250 - 1.375	-	-	6PM622	-
1 1/4"	6PH114	6H114	1.438 - 1.562	-	-	6PM625	-
1 1/2"	6PH112	6H112	1.562 - 1.688	-	-	6PM627	-
			1.688 - 1.812	-	-	6PM629	-

- Notes:**
- For available cord grips, see pgs 193-194.
 - For a guideline of NPT sizes based on cable ranges, see DR250 on pgs 152.
 - * For metal devices only

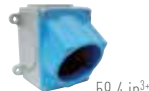
Angles



Nylon 30° Angle	Metal 30° Angle	Metal 70° Angle	Metal Angle+ Oversized 30°	Metal Straight Adapter	Metal Lateral Angle 30°
MP6	MA6	89-6A027	MA660	MS6	MAB6

* Mounts on oversize box only. Order with MB10 box. See page 150.

Junction Boxes



NPT	Metal Box	Metal Box with Nylon Angle	Metal Box with Metal Angle	Poly* Conduit Entry	Poly 70°** Wall Box
1/2"	-	-	-	MC612	51-DA058
3/4"	-	-	-	MC634	51-DA058
1"	MB61	31-6A053-080-1	39-6A053-080-1	MC61	51-DA058
1 1/4"	MB6114	31-6A053-080-114	39-6A053-080-114	MC6114	51-DA058
1 1/2"	MB6112	31-6A053-080-112	39-6A053-080-112	-	51-DA058
2"	MB62	31-6A053-080-2	39-6A053-080-2	-	51-DA058

* For poly devices only

** 70° boxes are not drilled. Contact customer service if factory drilling is required.

* Interior volume with receptacle installed.

Miscellaneous Accessories



* Set of Two (2)



For Male Devices Only



For Male Devices Only



Finger Drawplates	Protective Cap	Padlockable Cap Aluminum	Inlet Spring-Loaded Cap
FDP6	31-6A426	DS6MC	31-6A226

Specialty Products Spotlight

Poly 70° Wall Box



Entries and exits can be drilled in the field using pilot holes at top, bottom or sides. Large box size makes wiring easy. 70° angle reduces protrusion and minimizes impact risk.

Order Example

A typical order should include an inlet part number, a receptacle part number **AND** the matching handles, angles or other required accessories.



Male Inlet with Handle (Plug)
31-68243-K04 + FH611



Female Receptacle with Angle Adapter
31-64243-K04 + MP6



DR – 150A

Standard Duty Plugs & Receptacles

Ratings

- Voltage**
600 VAC
- Current Interruption Capability**
For current interrupting up to 250 VAC

For Switch-Rated devices, see DS & DSN sections.

- Short Circuit Rating**
10kA
Testing was performed with RK1 current limiting fuses sized at least 100% of the devices ampacity rating.

- Environmental Ratings**
Type 4X, IP66+IP67 (Poly Only)
Type 3R, IP54/IP55* (Metal Only)

* IP54 when the plug & receptacle are mated. IP55 on the receptacle alone when the lid is latched closed.

- Temperature Range**
Min -40°F / Max 140°F
See pg 220 for temps below -15°F.

- Wiring Capacity**
Min 8 AWG Max 2/0 AWG
Aux Contacts - Max 14 AWG

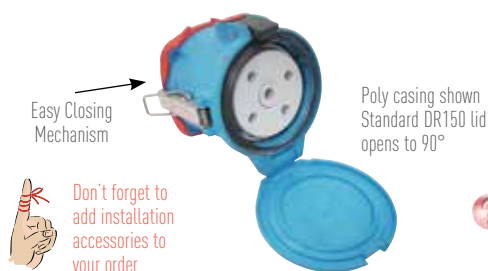
* Based on THHN wire sizes

- Listings**

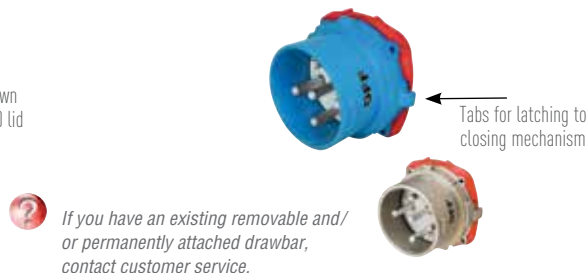
UL, CSA, IEC, CE*

* Contact Customer Service

Receptacle (female)



Inlet (male)



Voltage	Polarity	Part #	
		Poly	Metal
120/208V	3P+N+G	31-94237-K16	39-94237-K16
125V	1P+N+G	31-94175-K07	39-94175-K07
125/250V	2P+N+G	31-94176-K07	39-94176-K07
208V	2P+G	31-94232-K16	39-94232-K16
208V	3P+G	31-94233-K16	39-94233-K16
250V	2P+G	31-94172-K07	39-94172-K07
250V	3P+G	31-94173-K07	39-94173-K07
277V	1P+N+G	31-94245-K04	39-94245-K04
277/480V	3P+N+G	31-94247-K04	39-94247-K04
347/600V	3P+N+G	31-94187-K14	39-94187-K14
480V	2P+G	31-94242-K04	39-94242-K04
480V	3P+G	31-94243-K04	39-94243-K04
600V	2P+G	31-94182-K14	39-94182-K14
600V	3P+G	31-94183-K14	39-94183-K14

Voltage	Polarity	Part #	
		Poly	Metal
120/208V	3P+N+G	31-98237-K16	39-98237-K16
125V	1P+N+G	31-98175-K07	39-98175-K07
125/250V	2P+N+G	31-98176-K07	39-98176-K07
208V	2P+G	31-98232-K16	39-98232-K16
208V	3P+G	31-98233-K16	39-98233-K16
250V	2P+G	31-98172-K07	39-98172-K07
250V	3P+G	31-98173-K07	39-98173-K07
277V	1P+N+G	31-98245-K04	39-98245-K04
277/480V	3P+N+G	31-98247-K04	39-98247-K04
347/600V	3P+N+G	31-98187-K14	39-98187-K14
480V	2P+G	31-98242-K04	39-98242-K04
480V	3P+G	31-98243-K04	39-98243-K04
600V	2P+G	31-98182-K14	39-98182-K14
600V	3P+G	31-98183-K14	39-98183-K14

Other voltage configurations are available – contact customer service at 800.433.7642.

Main Options



Auxiliary Contacts



Mushroom Pawl



Padlock Pawl



Closed Lid Configuration

Recommended for cord applications to keep lid tucked in to avoid damage.



See pgs 197-206 for detailed information on these options

Receptacle Options

Part

With 2 Auxiliary/Pilot contacts	Recept # - 262
With 3 Auxiliary/Pilot contacts	Recept # - 263
With 4 Auxiliary/Pilot contacts	Recept # - 264
With 5 Auxiliary/Pilot contacts	Recept # - 975
With 6 Auxiliary/Pilot contacts	Recept # - 976
Type 4X & closed lid configuration	Recept # - 4X
Mushroom Pawl	Recept # - 375
Padlock Pawl	Recept # - 843
Padlockable Mushroom Pawl	Recept # - 375-843
Locking Mushroom Pawl	Recept # - 845
Metal Pawl (on poly receptacle)	Recept # - 824
180° Opening Lid	Recept # - 180**
Closed Lid configuration	Recept # - NC
With Auxiliary Switch	Recept # - 270***

Notes: ** Required when mating to rigid mounted male inlet
*** Not UL/CSA listed

Inlet Options

Part

With 2 Auxiliary/Pilot contacts	Inlet # - 262
With 3 Auxiliary/Pilot contacts	Inlet # - 263
With 4 Auxiliary/Pilot contacts	Inlet # - 264
With 5 Auxiliary/Pilot contacts	Inlet # - 975
With 6 Auxiliary/Pilot contacts	Inlet # - 976
Type 4X Watertightness	Inlet # - 4X
With No Lockout Hole	Inlet # - A155
For Auxiliary Switch*	Inlet # - NNF

Notes: * Order inlet with P+N+G configuration and receptacle with P+G configuration

DR150 Order Example:

To order 2 auxiliary contacts on an inlet and receptacle add **-262** to the part numbers.

DR150 Inlet 3P+G = 31-98243-K04-**262**

DR150 Receptacle 3P+G = 31-94243-K04-**262**

Appropriate accessory part numbers must also be included on the order.

Installation Accessories

Unless indicated otherwise, accessories can be used with either poly or metal plugs and receptacles

Handles



IP 66/67



NPT	Poly Handle	Metal* Handle
3/4"	9PH34	9H34
1"	9PH1	9H1
1 1/4"	9PH114	9H114
1 1/2"	9PH112	9H112
2"	9PH2	9H2

Cable Range	Santoprene™ Handle	Poly Handle w/Clamp & Bushing
.70 - 1.00	65-9A013-D25	–
1.00 - 1.375	65-9A013-D35	–
1.250 - 1.375	–	9PM622
1.375 - 1.750	65-9A013-D45	–
1.438 - 1.562	–	9PM625
1.562 - 1.688	–	9PM627
1.688 - 1.812	–	9PM629

- Notes:**
- Finger draw plates are recommended for easier connector closure on cord to cord assemblies.
 - For available cord grips, see pgs 193-194.
 - * For metal devices only

- For a guideline of NPT sizes based on cable ranges, see DR250 on pg 152.

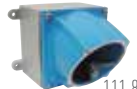
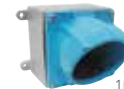
Angles



Nylon 30° Angle	Metal 30° Angle	Metal 70° Angle	Metal Angle+ Oversized 30°	Metal Straight Adapter
MP10	MA10	89-9A027	MA110	MS10

* Mounts on oversize box only. Order with MB220 box. See page 152.

Junction Boxes



108.7 in³*

111.8 in³*

NPT	Metal Box	Metal Box with Nylon Angle	Metal Box with Metal Angle
1 1/4"	MB10114	31-9A053-080-114	39-9A053-080-114
1 1/2"	MB10112	31-9A053-080-112	39-9A053-080-112
2"	MB102	31-9A053-080-2	39-9A053-080-2
2 1/2"	MB10212	31-9A053-080-212	39-9A053-080-212

* Interior volume with receptacle installed.

Miscellaneous Accessories



For Male Devices Only



For Male Devices Only



Cord Grip with Mesh

Protective Cap	Padlockable Cap Aluminum	Cord Grip with Mesh
31-9A126	DS9MC	see pgs 183-184

Feature Spotlight – Easy Closing Mechanism

A new and simplified closing mechanism is now standard on the DS100 and DS200 plugs and receptacles. This compact mechanism enables easy connection of the plug to the receptacle.

- Notes:** After connection, the mechanism must be released to allow disconnection of the device.

1



The plug is partially inserted, clamps are placed around tab, ready to pull the plug into the receptacle.

2



The handles are pushed down, the plug is fully drawn into the receptacle.

Order Example

A typical order should include an inlet part number, a receptacle part number **AND** the matching handles, angles or other required accessories.



Male Inlet with Handle (Plug)
39-98243-K04 + 65-9A013-D25



Female Receptacle with Angle Adapter
39-94243-K04 + MA10

DR250



DR – 250A Standard Duty Plugs & Receptacles

Ratings

- Voltage**
600 VAC
- Current Interruption Capability**
Not for current interrupting

For Switch-Rated devices, see DS & DSN sections.

- Short Circuit Rating**
10kA
Testing was performed with RK1 current limiting fuses sized at least 100% of the devices ampacity rating.

- Environmental Ratings**
Type 3R, IP54/IP55*

* IP54 when the plug & receptacle are mated. IP55 on the receptacle alone when the lid is latched closed.

- Temperature Range**
Min -40°F/Max 140°F
See pg 220 for temps below -15°F.

- Wiring Capacity**
Min 4 AWG Max 3/0+ AWG
Aux Contacts - Max 14 AWG
* Based on THHN wire sizes
+ 4/0 is available upon request by adding suffix "A06" to the inlet or receptacle.

- Listings**
UL, CSA, IEC, CE*

* Contact Customer Service

Receptacle (female)



Voltage	Polarity	Part # Metal
120/208V	3P+N+G	39-24237-K16
125V	1P+N+G	39-24035-K07
125/250V	2P+N+G	39-24036-K07
208V	2P+G	39-24232-K16
208V	3P+G	39-24233-K16
250V	2P+G	39-24032-K07
250V	3P+G	39-24033-K07
277V	1P+N+G	39-24245-K04
277/480V	3P+N+G	39-24247-K04
347/600V	3P+N+G	39-24027-K14
480V	2P+G	39-24242-K04
480V	3P+G	39-24243-K04
600V	2P+G	39-24022-K14
600V	3P+G	39-24023-K14

Inlet (male)



Voltage	Polarity	Part # Metal
120/208V	3P+N+G	39-28237-K16
125V	1P+N+G	39-28035-K07
125/250V	2P+N+G	39-28036-K07
208V	2P+G	39-28232-K16
208V	3P+G	39-28233-K16
250V	2P+G	39-28032-K07
250V	3P+G	39-28033-K07
277V	1P+N+G	39-28245-K04
277/480V	3P+N+G	39-28247-K04
347/600V	3P+N+G	39-28027-K14
480V	2P+G	39-28242-K04
480V	3P+G	39-28243-K04
600V	2P+G	39-28022-K14
600V	3P+G	39-28023-K14

Other voltage configurations are available – contact customer service at 800.433.7642.

Main Options



Auxiliary Contacts



Mushroom Pawl



Padlock Pawl



Closed Lid Configuration

Recommended for cord applications to keep lid tucked in to avoid damage.

See pgs 197-206 for detailed information on these options

Receptacle Options

Part

With 2 Auxiliary/Pilot Contacts	Recept # - 172
With 3 Auxiliary/Pilot Contacts	Recept # - 173*
With 4 Auxiliary/Pilot Contacts	Recept # - 174*
With 5 Auxiliary/Pilot Contacts	Recept # - 175*
Type 4X & closed lid configuration	Recept # - 4X
Mushroom Pawl	Recept # - 375
Padlock Pawl	Recept # - 843
Padlockable Mushroom Pawl	Recept # - 375-843
Locking Mushroom Pawl	Recept # - 845
Metal Pawl (on poly receptacle)	Recept # - 824
180° Opening Lid	Recept # - 180**
Closed Lid Configuration	Recept # - NC
With Auxiliary Switch	Recept # - 270***

Notes: * DR250 devices with 3 or more auxiliary/pilot contacts are not UL/CSA listed
** Required when mating to rigid mounted male inlet
*** Not UL/CSA listed

Inlet Options

Part

With 2 Auxiliary/Pilot Contacts	Inlet # - 172
With 3 Auxiliary/Pilot Contacts	Inlet # - 173*
With 4 Auxiliary/Pilot Contacts	Inlet # - 174*
With 5 Auxiliary/Pilot Contacts	Inlet # - 175*
Type 4X Watertightness	Inlet # - 4X
With No Lockout Hole	Inlet # - A155
For Auxiliary Switch*	Inlet # - NNF

Notes: * Order inlet with P+N+G configuration and receptacle with P+G configuration

DR250 Order Example:

To order 2 auxiliary/pilot contacts on an inlet and receptacle add **-172** to the part numbers.

DR250 Inlet 3P+G = 39-28243-K04-**172**

DR250 Receptacle 3P+G = 39-24243-K04-**172**

Appropriate accessory part numbers must also be included on the order.

Installation Accessories

Handles



IP 66/67

NPT	Poly Handle	Metal Handle
1"	-	2H1
1 1/4"	-	2H114
1 1/2"	2PH112	2H112
2"	2PH2	2H2
2 1/2"	2PH212	2H212
3"	-	2H3

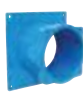
Cable Range	Santoprene™ Handle
1.00 - 1.375	35-2A013-D35
1.375 - 1.750	35-2A013-D45
1.750 - 1.900	35-2A013-D49

NPT Guidelines

Cable Range	NPT
.312 - .625	1/2"
.438 - .812	3/4"
.660 - 1.000	1"
.875 - 1.375	1 1/4"
.890 - 1.812	1 1/2"
1.190 - 2.438	2"
2.062 - 2.438	2 1/2"

- Notes:**
- Finger draw plates are recommended for easier connector closure on cord to cord assemblies.
 - For available cord grips, see pgs 193-194.

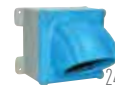
Angles



Metal 60° Angle	Metal Angle+ Oversized 45°	Metal Straight Adapter
MA20	MA220	MS20

* Mounts on oversize box only.

Junction Boxes

248.4 in³*

	Metal Box	Metal Box for Metal Angle Oversized	Metal Box with Metal Angle
1 1/2"	MB20112	-	39-2A053-080-112
2"	MB202	-	39-2A053-080-2
2 1/2"	MB20212	MB22212	39-2A053-080-212

* Interior volume with receptacle installed.

Miscellaneous Accessories



For Male Devices Only



For Male Devices Only



Protective Cap	Padlockable Cap Aluminum	Cord Grip with Mesh
31-2A126	DS2MC	see pgs 193-194

Feature Spotlight – Easy Closing Mechanism

A new and simplified closing mechanism is now standard on the DS100 and DS200 plugs and receptacles. This compact mechanism enables easy connection of the plug to the receptacle.

Notes: After connection, the mechanism must be released to allow disconnection of the device.

1



The plug is partially inserted, clamps are placed around tab, ready to pull the plug into the receptacle.

2



The handles are pushed down, the plug is fully drawn into the receptacle.

Order Example

A typical order should include an inlet part number, a receptacle part number **AND** the matching handles, angles or other required accessories.



Male Inlet with Handle (Plug)
39-28247-K04 + 35-2A013-D35



Female Receptacle with Angle Adapter
39-24247-K04 + MA20