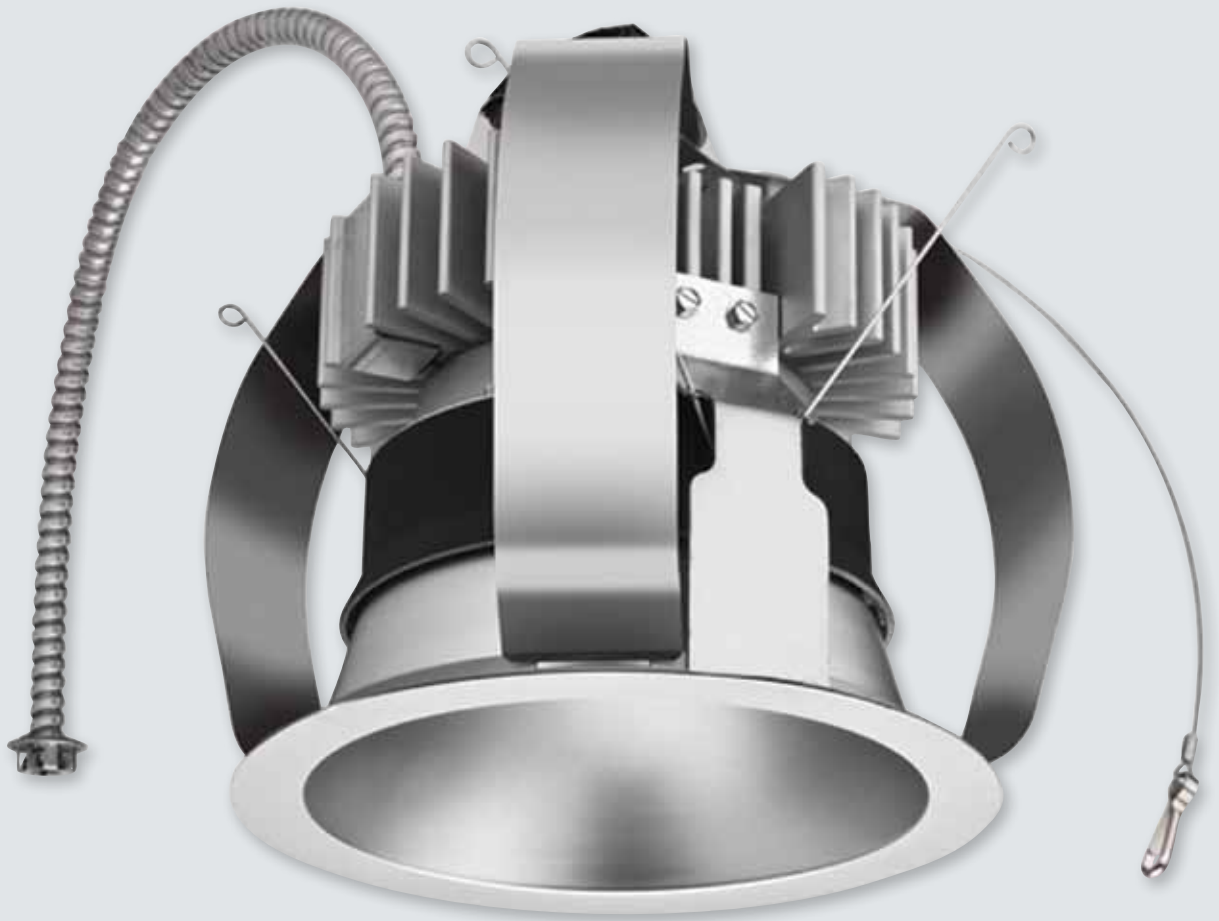


Accomplish More With Your **Facility Budget...**



NEW! Retrofit Commercial LED Downlight to replace installed traditional source products.

RV Series Retrofit Commercial
LED Downlight

By Reducing 3 Key Elements — Maintenance Costs, Energy Bills & Installation Time

1. 50,000 hours life to L70 gives 10 years of maintenance free operation

- NO MORE** {
- ✓ Calls for unscheduled lamp replacement
 - ✓ Lamp closets and inventory to maintain
 - ✓ Dark areas in your space
 - ✓ Maintenance staff on ladders for extended time

10 YEAR TOTAL COST OF OWNERSHIP			
	70w ED17 HID	2/32 TRT CFL	RV8 3000
Total 10 YR. Energy Cost	\$420.48	\$362.66	\$110.38
Total 10 YR. Maintenance Cost	\$62.00	\$93.00	—
Total Cost of Ownership	\$482.00	\$455.66	\$110.38
RV 10 YR. Total Savings	\$372.10	\$345.28	—

Based on \$0.12 per kWh and 4,380 hours annual usage



3. Upgrade existing downlights in less than 5 minutes

- ✓ **Product Selection Sheet and Lumen Equivalency Chart** help customers easily identify the right product to install.
- ✓ **One piece housing** designed for easy install from below applications — eliminating ceiling plane breakage.
- ✓ **Single unit installation time of < 5 minutes** — entire areas can be changed out after hours without disrupting occupants.



Competitor Product

2. Energy Efficient Design

High efficacy LED light engine provides high quality light at > 60 lumens per watt with excellent line voltage dimming performance.

DELIVERED LUMEN VALUES						
Product	600	1000	1500	2000	2500	3000
6" Open Retrofit	●	●	●			
6" Wallwash Retrofit	●	●	●			
8" Open Retrofit				●	●	●
8" Wallwash Retrofit				●	●	●
Approx. LED Wattage	9.5w	15w	23w	31w	39w	46w
Comparable Fluorescent	18w CFL	26w CFL	32w CFL	1/42w CFL 2/26w CFL	2/32w CFL	>2/32w CFL
Comparable HID	n/a	n/a	n/a	n/a	50w ED17	70w ED17
Comparable Incandescent	65w BR30	120w BR40	150w A21	200w A21	n/a	300w BR40
Comparable Halogen PAR	50w	75w	90w	100w	n/a	n/a



Product Attributes

- Available for 120 or 277 volt line voltage input
- High efficacy light engine provides > 60 LPW with 83 CRI
- Innovative commercial luminaire design retains and centers fixture into a range of existing mounting pans
- 8" apertures from 7-3/4" to 8-7/8"; 6" apertures from 5-5/8" to 6-3/4"
- Line voltage dimmable – allows dimming without pulling additional wires
- ENERGY STAR® listed to qualify for Utility Incentives

Revitalize Existing Spaces.

RELIGHT is an integrated lighting solution for renovating existing spaces. Quick and easy-to-install without breaking the ceiling plane; RELIGHT refreshes the space while enhancing the lighting quality and reducing energy, labor and maintenance costs. The RV Series Retrofit Commercial LED Downlight is part of the RELIGHT collection of retrofit solutions by Lithonia Lighting. RV Series one piece housing and one piece reflector is specifically designed for install from below applications that allows for quick and easy installation.



REUSE

Leave the downlight pan and wiring in place to reuse with the commercial retrofit LED. **No need to enter the ceiling or rewire.**



REDUCE

Upgrade the lamp and reflector with the RV series LED providing 50,000 hour L70 life and **reduce energy use by up to 50%.**



RECYCLE

Recycle the reflectors and lamps in an environmentally friendly way.

REALIZE RELIGHT

IMPROVE THE LOOK of your space and your ceiling **WITHOUT THE HASSLES** of full-fixture replacement.

www.lithonia.com/RELIGHT

ORDERING INFORMATION

Lead times will vary depending on options selected. Consult with your sales representative.

Example: RV8 35/30 R08AR LS 120

RV8

Series	Color Temperature	Nominal light output	Reflector	Trim color	Finish	Voltage	Options
RV8	27 2700K	20 2000 lumens ¹	R08	AR Clear	(blank) Semi-specular	120	TRW White painted flange
	30 3000K	25 2500 lumens ¹		PR Pewter	LD Matte diffuse	277	TRBL Black-painted flange
	35 3500K	30 3000 lumens ¹		WTR Wheat	LS Specular		
	40 4000K			WR ¹ White ²			



Notes:

¹Approximate lumen output
²Not available with finishes

Ordering Tree Notes:

*As part of our ongoing improvement and development process, the RV Series products will change over time. Please consult our website for the latest product information.
**For other commercial aperture sizes, wallwash or variations, please consult the factory for additional solutions.