



# JUNO HD COMMERCIAL TRAC

277V, 2-Circuit/2-Neutral Trac System

## TRAC SECTIONS, JOINERS, FEEDS, ACCESSORIES & FIXTURES

**HTEK Series**

Project: \_\_\_\_\_

Fixture Type: \_\_\_\_\_

Location: \_\_\_\_\_

Contact/Phone: \_\_\_\_\_

### PRODUCT DESCRIPTION

Juno HD Commercial 2-Circuit/2-Neutral Trac is ideal for dimming intensive applications. The independent neutrals guarantee that the two circuits are completely isolated. The potential for cross-circuit interference and neutral harmonics is completely eliminated to ensure trouble-free dimming. The HD Commercial 2-Circuit/2-Neutral Trac's extruded aluminum construction and continuously crimped conductors ensure mechanical strength and electrical reliability. Its integral suspension rail and predrilled mounting holes simplify installation. A wide variety of Juno trac fixtures may be specified for use with the HD Commercial Trac system.



### PRODUCT SPECIFICATIONS

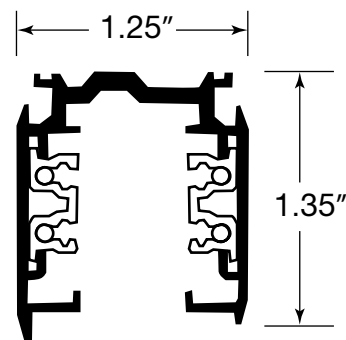
**Construction** Rugged, heavy gauge extruded aluminum channel • Firmly crimped insulation and conductors for superior mechanical strength and electrical reliability • Integral mounting channel simplifies installation • Integral polarity ridge ensures proper connector and fixture installation • Fixtures supported by aluminum trac extrusion to provide maximum weight bearing capacity and to ensure reliable contact with electrical conductors • Available in white or black painted finishes.

**Electrical** Two circuit operation with independent neutrals • Each circuit is rated for 20 Amp, 277 Volt operation • Trac extrusion serves as 100% capacity ground • May be powered using a number of standard electrical feeds, or current limiting end feeds if necessitated by local codes.

**Fixture Adapter** System specific and assembled to trac fixture • Integrally polarized construction to prevent reverse installation – only allows insertion in proper orientation • Rotary circuit selector enables simple switching between circuits • Integral on/off switch enables individual fixtures to be switched for servicing • See compatible trac fixture selection on page 2 – contact factory for additional fixture choices.

**Labels** UL Listed • cUL Listed • Current Limiting Feeds approved by the California Energy Commission to meet requirements of Title 24 • Current Limiting Feeds comply with ASHRAE 90.1 and IECC Section 805.5.1.4 for trac current limiting.

### DIMENSIONS



### PRODUCT INSTALLATION

**Installation** May be installed in linear or grid configurations (see examples on page 2) • Trac sections can be cut in the field • Conductors of field cut trac sections must be bent using XTSV12 Bending Tool to ensure proper electrical connections.

**Mounting** May be mounted directly to hard ceiling using suitable anchors (supplied by others) at pre-drilled mounting holes or using SKB10 Mounting Clip and integral suspension rail • May be mounted to T-bar ceiling using appropriate SKBT12 or SKBX12 Mounting Clips and integral suspension rail • Can also be suspended from ceilings using SPUS Pendant Stem Kits, SKB34 Cable Suspension Kits or 1/4"-20 threaded rod (by others) • Mounting points should be spaced no further than 4' apart and within 6" of any trac feed point, junction or end point.

# JUNO HD COMMERCIAL TRAC

277V, 2-Circuit/2-Neutral Trac System

## TRAC SECTIONS, JOINERS, FEEDS, ACCESSORIES & FIXTURES

**HTEK Series**

### TRAC SECTIONS

#### PRODUCT CODES

Catalog Number	Description	Finish	Actual Length
HTEK44-BL	4' Trac Section	Black	48"
HTEK44-WH	4' Trac Section	White	48"
HTEK48-BL	8' Trac Section	Black	96"
HTEK48-WH	8' Trac Section	White	96"
HTEK412-BL	12' Trac Section	Black	144"
HTEK412-WH	12' Trac Section	White	144"

#### HD Commercial Trac Compatible Fixtures

A variety of Juno trac fixture designs can be adapted to operate with the Juno HD Commercial Trac system. Each fixture has a factory-assembled 2-circuit trac adapter that is uniquely keyed to the 277V HD Commercial Trac system. **To order, simply replace the "T" prefix in the standard fixture catalog number with the "HTEK" prefix and eliminate all dashes to indicate fixtures for use with the HD Commercial Trac system – see examples below.**

Compatible fixture families include (consult factory for additional choices):

**T209LED, T209LG2** LED Conix  
**T255LED, T255LG2** LED Cylindra  
**T256LED, T257LED, T258L, T259L** LED Flood/Wall Washers  
**T261LG2, T262L, T263LG2,**  
**T265LG2, T267L** LED Conix II Series  
**T275L** LED Arc XL  
**T5T** T5HO Wall Washers  
**TBX18** Biax Wall Washer  
**TM201** CMH Vertical Ballast Universal (39W & 70W only)  
**TM202** CMH Vertical Ballast R-111 Swivel (39W & 70W only)  
**TM203** CMH Vertical Ballast Pro-Gimbal  
**TM204** CMH Vertical Ballast Pro-Gimbal (70W only)  
**TM207** CMH Vertical Ballast Conix PAR (39W only)  
**TM208** CMH Vertical Ballast Conix PAR  
**TM209** CMH Vertical Ballast Conix PAR (70W only)  
**TM210, TM211, TM212** CMH Vertical Ballast Conix ED17  
**TM213, TM214, TM215** CMH Vertical Ballast Conix T6, G12  
 (50W, 70W & 100W only)  
**TM216, TM217, TM218** CMH Vertical Ballast Conix T4, G8.5  
**TM232** CMH Vertical Ballast Concentric Cylinder T4, G8.5  
 (20W & 39W only)  
**TM241** CMH Vertical Ballast Cylindra MR16 (39W & 50W only)  
**TM244, TM245, TM246** CMH Vertical Ballast Cylindra PAR  
**TM250** CMH Vertical Ballast Cylindra ED17  
**TM251** CMH Vertical Ballast Cylindra T6, G12  
**TM252** CMH Vertical Ballast Cylindra T4, G8.5

**TM254** CMH Vertical Ballast Cylindra T4, GU6.5  
 (15W & 39W only)

**TM256** CMH Vertical Ballast Flood/Wall Wash T6, G12

**TM257** CMH Vertical Ballast Flood/Wall Wash T4, G8.5

**Ordering Examples:** "T253LED-3K-NFL-WH" becomes  
 "HTEK253LED3KNFLWH" and "TM208-70EMH-WH" becomes  
 "HTEKM20870EMHWH"



1300 S. Wolf Road • Des Plaines, IL 60018 • Phone (847) 827-9880 • Fax (847) 827-2925  
 220 Chrysler Drive • Brampton, Ontario • Canada L6S 6B6 • Phone (905) 792-7335 • Fax (905) 792-0064  
 Visit us at [www.junolightinggroup.com](http://www.junolightinggroup.com)

Printed in U.S.A. ©2015 Juno Lighting, LLC.

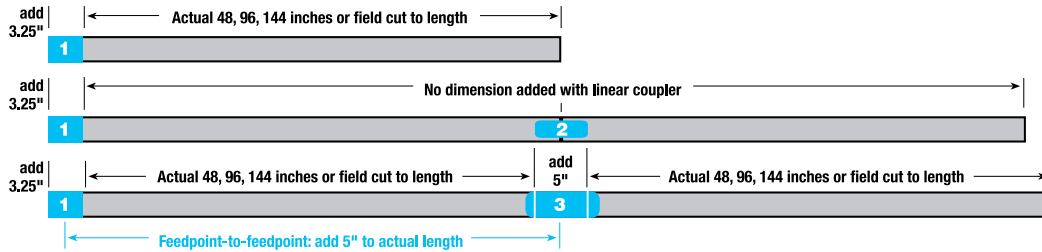
# JUNO HD COMMERCIAL TRAC

277V, 2-Circuit/2-Neutral Trac System

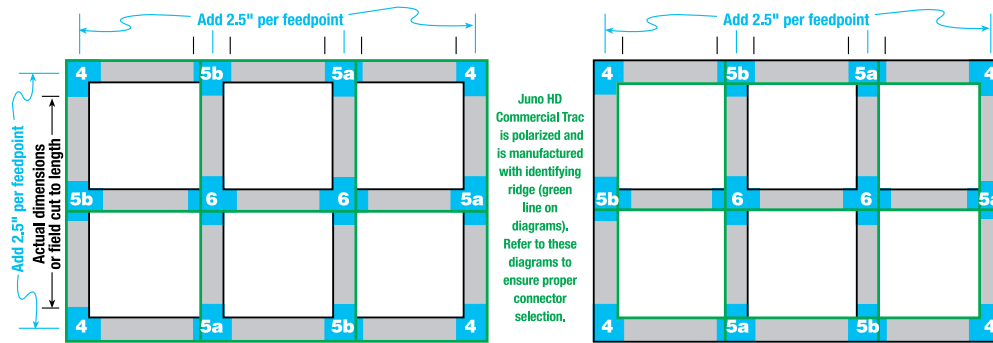
## TRAC SECTIONS, JOINERS, FEEDS, ACCESSORIES & FIXTURES

HTEK Series

### POSSIBLE TRAC CONFIGURATION & RECOMMENDED COMPONENTS



- 1. HTEK11** End Feed (left) - standard
- HTEK12** End Feed (right) (used for conduit feed also)
- 2. HTEK21** Miniature Straight Connector
- 3. HTEK14** Center Feed
- 4. HTEK34** 90° "L" Connector (adjustable universal polarity)
- 5a. HTEK39** "T" Connector (adjustable right polarity)
- 5b. HTEK40** "T" Connector (adjustable left polarity)
- 6. HTEK38** "X" Connector



# JUNO HD COMMERCIAL TRAC

277V, 2-Circuit/2-Neutral Trac System

## TRAC SECTIONS, JOINERS, FEEDS, ACCESSORIES & FIXTURES

### HTEK Series

#### SYSTEM COMPONENTS



**HTEK11-BL, HTEK11-WH**  
End Feed - Left Polarity  
Enables feeding of HTEK Trac from top.  
Use as Conduit End Feed also.



**HTEK12-BL, HTEK12-WH**  
End Feed - Right Polarity  
Enables feeding of HTEK Trac from top.  
Use as Conduit End Feed also.



**HTEK11CL-BL, HTEK11CL-WH**  
Current Limiting End Feed - Left Polarity  
Enables feeding of HTEK Trac from top.  
Requires two HTCL Current Limiters (one per circuit) to provide trac current limiting per national, state and local energy codes.



**HTEK12CL-BL, HTEK12CL-WH**  
Current Limiting End Feed - Right Polarity  
Enables feeding of HTEK Trac from top.  
Requires two HTCL Current Limiters (one per circuit) to provide trac current limiting per national, state and local energy codes.



**HTCLO.25BL, HTCLO.25WH**  
**HTCLO.50BL, HTCLO.50WH**  
**HTCLO.75BL, HTCLO.75WH**  
**HTCL1.00BL, HTCL1.00WH**  
**HTCL2.50BL, HTCL2.50WH**  
**HTCL5.00BL, HTCL5.00WH**  
**HTCL7.50BL, HTCL7.50WH**  
**HTCL10.0BL, HTCL10.0WH**  
**HTCL15.0BL, HTCL15.0WH**  
Screw-In Current Limiters  
For use with HTEK11 or HTEK12 Current Limiting End Feeds. Available in 0.25A (69W), 0.50A (138W), 0.75A (207W), 1A (277W), 2.5A (692W), 5A (1385W), 7.5A (2077W), 10A (2770W) and 15A (4155W) ratings.



**HTEK14-BL, HTEK14-WH**  
Center Feed  
Joins two HTEK trac sections in-line both electrically and mechanically. Enables feeding of HTEK Trac from top at intersection.



**HTEK21-BL, HTEK21-WH**  
Miniature Straight Connector  
Joins two HTEK trac sections in-line both electrically and mechanically.



**HTEK24-BL, HTEK24-WH**  
Adjustable Connector  
Capable of joining two HTEK Trac sections at 90° to 180°. Ideal for applications where using an "L" connector is not practical; also useful for installing Trac around curved architectural details.



**HTEK34-BL, HTEK34-WH**  
90° "L" Connector  
Joins HTEK Trac sections to make a 90° angle with continued electrical feed. May be used to feed HTEK Trac from top.



**HTEK38-BL, HTEK38-WH**  
"X" Connector  
Joins four HTEK Trac sections to make an "X" intersection with continued electrical feed. May be used to feed HTEK Trac from top.



**HTEK39-BL, HTEK39-WH**  
"T" Connector - Adjustable Right Polarity  
Joins three HTEK Trac sections to make a "T" intersection with continued electrical feed. May be used to feed HTEK Trac from top.



**HTEK40-BL, HTEK40-WH**  
"T" Connector - Adjustable Left Polarity  
Joins three HTEK Trac sections to make a "T" intersection with continued electrical feed. May be used to feed HTEK Trac from top.



**GES15-BL, GES15-WH**  
Outlet Box Cover  
Thermoplastic outlet box cover for use when feeding HTEK Trac directly over outlet box using HTEK11, HTEK12, HTEK14, HTEK34, HTEK38, HTEK39 or HTEK40.



**TEK41-BL, TEK41-WH**  
Dead End  
Not supplied with HTEK Trac sections — must be ordered separately.



**XTSV12**  
Trac Conductor Bending Tool  
All-in-one hand tool bends the trac conductors and measures the correct length to ensure proper electrical contact. Required only if trac sections are cut in the field.



**SKB10-BL, SKB10-WH**  
Mounting Bracket  
For mounting direct to ceiling.



**SKBT12-BL, SKBT12-WH**  
Mounting Bracket  
For mounting to flush tile T-bar ceiling.



**SKBX12-BL, SKBX12-WH**  
Mounting Bracket  
For mounting to drop tile recessed T-bar ceiling.



**SKB30-BL, SKB30-WH**  
Ceiling Cup Kit  
Use to suspend HTEK Trac from the ceiling when using steel cable or threaded rod. Included bracket provides suspension attachment point and ceiling cup covers the bracket for an aesthetically pleasing result. Combine with SP4P and SKB34 or 1/4"-20 threaded rod (supplied by others) for a complete suspension solution.



**SKB34-5, SKB34-9**  
Cable Suspension Kit  
Use to suspend HTEK Trac from the ceiling with supplied 5" or 9" steel cable. Includes cable and cable adjustment fitter. Combine with SP4P and SKB30 for a complete suspension solution.



**SPUS12-BL, SPUS12-WH,**  
**SPUS18-BL, SPUS18-WH,**  
**SPUS24-BL, SPUS24-WH,**  
**SPUS48-BL, SPUS48-WH**  
Mounting Stem Kit  
Use to suspend HTEK Trac from the ceiling. Combine with SP4P for suspension-only points. Available in 12", 18", 24" and 48" lengths.



**SP4P-BL, SP4P-WH**  
Universal Suspension Coupler  
Use with SPUS Stem Kit or SKB34 Cable Kit or 1/4"-20 threaded rod (supplied by others) to suspend HTEK Trac except at feed or connection points.

Finishes: BL - Black, WH - White



1300 S. Wolf Road • Des Plaines, IL 60018 • Phone (847) 827-9880 • Fax (847) 827-2925  
220 Chrysler Drive • Brampton, Ontario • Canada L6S 6B6 • Phone (905) 792-7335 • Fax (905) 792-0064  
Visit us at [www.junolightinggroup.com](http://www.junolightinggroup.com)

Printed in U.S.A. ©2015 Juno Lighting, LLC.