

FEATURES & SPECIFICATIONS

INTENDED USE — Ideal for retail areas, coves, corridors and lobbies.

CONSTRUCTION — Housing formed from cold-rolled steel. No asbestos is used in this product.

Channel is offset at both ends to provide continuous illumination without shadows. Sturdy channel cover secured by quarter-turn latch for easy access to wireway. Channel connectors provided (standard).

Accepts plug-in options for 1, 2 or 3 primary circuits.

Available in tandem-wired lengths.

Aluminum fixture available for use in harsh locations. See options.

Finish: High-gloss, baked white polyester finish. Five-stage iron-phosphate pretreatment ensures superior paint adhesion and rust resistance. Painted parts finished with high-gloss, baked white polyester.

ELECTRICAL — Fixture conforms to UL 1570 and is suitable for damp locations. AWM, TFN or THHN wire used throughout, rated for required temperatures.

Thermally protected, resetting, Class P, HPF, non-PCB, UL listed, CSA certified ballast is standard. Magnetic ballasts are sound rated C. Standard combinations are CBM approved and conform to UL 935. Electronic ballasts provide a sound rating of A.

LISTINGS — UL listed and labeled. Listed and labeled to comply with Canadian and Mexican Standards (see options). Listed for 25° C ambient temperature.

WARRANTY — 1-year limited warranty. Complete warranty terms located at www.acuitybrands.com/CustomerResources/Terms_and_conditions.aspx.

Note: Actual performance may differ as a result of end-user environment and application.

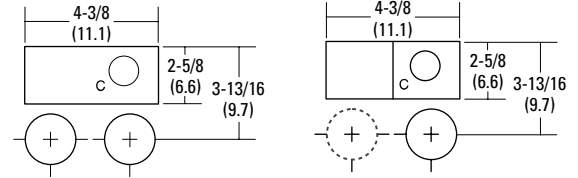
Specifications subject to change without notice.

Catalog Number
Notes
Type

Staggered Strip

SS

T5, T5HO, T8, T12



All dimensions are inches (centimeters) unless otherwise noted.

ORDERING INFORMATION

For shortest lead times, configure products using **bolded options**.

Example: SS 2 32 MVOLT GEB10IS

SS					
Series	Lamps	Lamp Type		Voltage	Options
SS Staggered strip For tandem double-length unit, add prefix T. Example: TSS	1	<u>T8</u>	<u>T5</u>	120	GEB Electronic ballast, ≤20% THD
	2 Not included.	17 17W (24") 25 25W (36") 32 32W (48")	14T5 14W (22") 21T5 21W (34") 28T5 28W (46")	277 347 MVOLT Others available	GEB10PS T5 electronic ballast, ≤10% THD, program start (not available with T12) GEB10IS T8 electronic ballast, ≤10% THD, instant start (not available with T12)
		<u>HQ</u>	<u>Slimline</u>		GEB10RS T8 electronic ballast, ≤10% THD, rapid start (not available with T12)
		24T5HO 24W (22") 39T5HO 39W (34") 54T5HO 54W (46") 24HO 35W 800MA T12 (24") 36HO 45W 800MA T12 (36") 48HO 60W 800MA T12 (48") 72HO 85W 800MA T12 (72") 96HO 110W 800MA T12 (96") 96T8HO 86W T8HO 380 MA (96")	24 20W T12 Slimline (24") 36 36W T12 Slimline (36") 48 48W T12 Slimline (48") 96 75W T12 Slimline (96")		EL5 Emergency battery pack (nominal 500 lumens); see Life Safety Section ¹ EL14 Emergency battery pack (nominal 1400 lumens); see Life Safety Section ¹ GLR Internal fast-blow fuse (add X for external) ¹ GMF Internal slow-blow fuse (add X for external) ¹ PLR_ Plug-in wiring; specify 1, 2 or 3 branch circuits and hot wires (A=black, B=red, C=blue, AB or AC) TILW Tandem in-line wiring AL Aluminum housing, white enamel finish CSA CSA-labeled for US shipment to Canada NOM NOM labeled for US shipment to Mexico

Accessories: Order as separate catalog number.

SSASR 48 1	Asymmetric reflector, 4' white for 1-lamp fixture ^{2,3}
SSASR 48 2	Asymmetric reflector, 4' white for 2-lamp fixture ³
SSSMR 48 1	Symmetric reflector, 4' white for 1-lamp fixture ^{2,3}
SSSMR 48 2	Symmetric reflector, 4' white for 2-lamp fixture ³

Notes

- Specify voltage.
- Asymmetric reflectors are recommended for dual-lamp SS fixture applications. This reflector is not recommended for single-lamp SS applications due to improper cutoff, as the focal point changes every four feet.
- SSR – Specular finish aluminum (95% reflectance).

SS Staggered Strip

MOUNTING DATA

For continuous row installation, suspended mounting.

One end plate per fixture supplied. Channel-to-channel connection uses two spade connectors inserted as shown in Fig A.

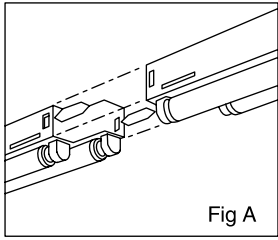


Fig A

A = 11/16 (1.74) Dia. K.O.
 B = 2 (5.08) Dia. K.O.*
 C = 7/8 (2.22) Dia. K.O.
 *on 68" channels and longer

DIMENSIONS

Inches (centimeters). Subject to change without notice.

1-Lamp – Deduct 4" for each overlap from the combined total lamp length. Example: Total lamp length of three SS240 fixtures is 156", less 8" for two overlaps. Installed length is 148".

2-Lamp – Add 4" to total lamp length. Example: Total lamp length of three SS 240 fixtures is 156", add 4". Installed length is 160".

Aluminum channels have different mounting details. All size channels have just (2) 7/8" K.O.s, 6" from each end.

