

FEATURES & SPECIFICATIONS

INTENDED USE — Specification premium, high performance, static T8 luminaires provide general illumination for recessed applications; ideal for restricted plenum spaces. **Certain airborne contaminants can diminish integrity of acrylic.** [Click here for Acrylic Environmental Compatibility table for suitable uses.](#)

ATTRIBUTES — Designed exclusively for use with T8 lamps, electronic ballasts and sockets.

CONSTRUCTION — Smooth hemmed sides and smooth, inward formed end flanges for safe handling. Lighter weight fixture allows safe, easy installation.

Standard steel door frame has superior structural integrity with premium extruded appearance and precision flush mitered corners. Powder-painted, steel latches provide easy, secure door closure.

Superior mechanical light seal requires no foam gasketing. Integral T-bar clips secure fixture to T-bar system. Housing formed from cold-rolled steel. Acrylic shielding material 100% UV stabilized. No asbestos is used in this product.

FINISH — Five-stage iron-phosphate pretreatment ensures superior paint adhesion and rust resistance. Painted parts finished with high-gloss, baked white enamel.

OPTICAL — A12 lens features reverse apex technology for superior lamp obscuration and improved visual comfort.

ELECTRICAL — Standard ballast is electronic, thermally protected, resetting, Class P, HPF, non-PCB, UL Listed, CSA certified ballast. Energy-saving and electronic ballasts sound rated A.

Luminaire is suitable for damp locations. AWM, TFN or THHN wire used throughout, rated for required temperatures.

LISTINGS — Standard: UL. Optional: Canada — CSA or cUL; Mexico — NOM.

WARRANTY — 1-year limited warranty. Complete warranty terms located at www.acuitybrands.com/CustomerResources/Terms_and_conditions.aspx

Note: Actual performance may differ as a result of end-user environment and application.

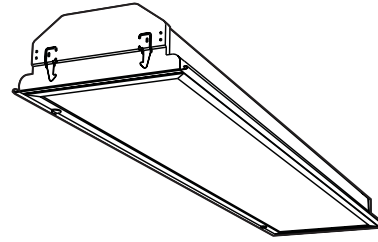
Specifications subject to change without notice.

Catalog Number
Notes
Type

Specification Premium Static Troffer

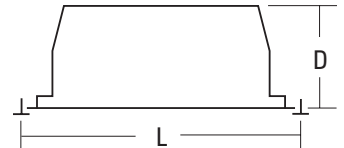
SP8 1'X4'

1, 2 or 3 Lamps



Specifications

Length: 48 (121.8)
 Width: 12 (30.5)
 Depth: 4-1/2 (11.4)
 Weight: 17 lbs (7.7 kg)
 All dimensions are inches (centimeters).



ORDERING INFORMATION

For shortest lead times, configure products using **bolded options**.

Example: SP8 G 3 32 A12 MVOLT GEB10IS

Series	Trim type	Number of lamps	Lamp type	Door frame	Diffuser type	Voltage	Options
SP8 1' wide	G Grid F Overlapping flanged	1 2 3 Not included	32 32W T8 (48")	(blank) Flush steel, white FN Flush aluminum, natural FM Flush aluminum, matte black FW Flush aluminum, white RN Regressed aluminum, natural RW Regressed aluminum, white	A12 #12 pattern acrylic A12125 #12 pattern acrylic, .125" thick RA125 #12 pattern acrylic, 0.125" thick, reverse apex A19 #19 pattern acrylic, .156" thick A15 #15 pattern acrylic, .2" thick PC1S 1/2" x 1/2" x 1/2" plastic cube louver, silver PC2S 1-1/2" x 1-1/2" x 1" plastic cube louver, silver w/ flange PC3S 3/4" x 3/4" x 1/2" plastic cube louver, silver	120 277 347 MVOLT ¹ Others available	1/3 One 3-lamp ballast GEB10IS Electronic ballast, <10% THD, instant start GEB10RS Electronic ballast, <10% THD, rapid start EL Emergency battery pack (nominal 500 lumens) EL14 Emergency battery pack (nominal 1400 lumens) GLR Internal fast-blow fuse ² GMF Internal slow-blow fuse ² PWS1836 6' prewire, 3/8" dia., 18-gauge, 1 circuit LP_ Lamped, specify lamp type and color PAF Painted after fabrication (white enamel) SSR Specular silver interior finish (95% reflective) JP Palletized and stretch-wrapped without individual cartons; grid trim only CSA CSA Certified NOM NOM Certified

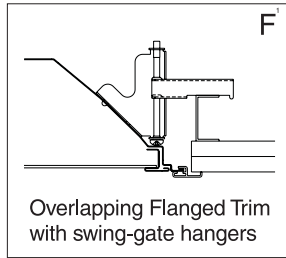
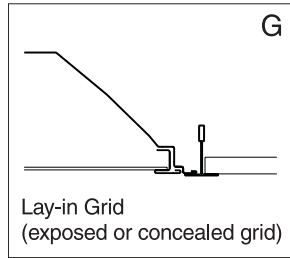
NOTES:

- MVOLT standard for 120-277V applications, 50-60 hz operation. Some options require voltage specified.
- Must specify voltage 120 or 277.

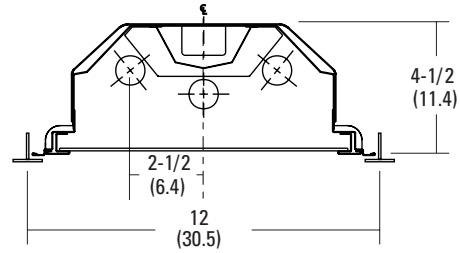
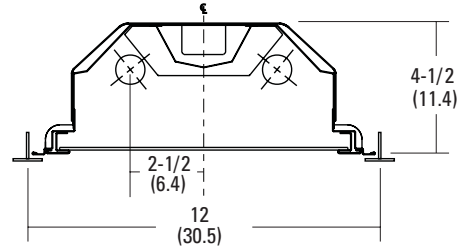
SP8 1'x4' Static Troffer, Straight Lamps

MOUNTING DATA

Continuous row mounting of flanged units requires CRE and CRM trim options (see Options).



DIMENSIONS



NOTE:

1 Recommended rough-in dimensions for F-trim fixtures 12"x48". (Tolerance is +1/4"-0".) Swing-gate range 1-9/16" to 3-3/4". Swing-gate span 10-3/4" to 14-3/4".

PHOTOMETRICS

Calculated using the zonal cavity method in accordance with IESNA LM41 procedure. Floor reflectances are 20%. Lamp configurations shown are typical. Full photometric data on these and other configurations available upon request.

SP8 2 32 A12

Report: **LTL12537**

LUMENS PER LAMP: **2850**

Luminaire Efficiency: 76.3%

Coefficients of Utilization

RCR	pw	20%								
		80%			50%			30%		
		70%	50%	30%	50%	30%	10%	50%	30%	10%
0	91	91	91	85	85	85	81	81	81	
1	84	81	78	76	74	72	73	71	69	
2	77	72	67	67	64	61	65	62	59	
3	71	64	58	60	56	52	58	55	51	
4	66	57	51	55	50	46	53	48	45	
5	61	52	46	49	44	40	48	43	40	
6	57	47	41	45	40	36	44	39	35	
7	53	43	37	41	36	32	40	35	32	
8	49	39	33	38	33	29	37	32	29	
9	46	36	31	35	30	26	34	30	26	
10	43	34	28	33	28	24	32	27	24	

Zonal Lumen Summary

Zone	Lumens	% Lamp	% Fixture
0° - 30°	1525	26.8	35.0
0° - 40°	2434	42.7	56.0
0° - 60°	3753	65.8	86.3
0° - 90°	4351	76.3	100.0
90° - 180°	0	0.0	0.0
0° - 180°	4351	76.3	100.0