

FEATURES & SPECIFICATIONS

INTENDED USE — Intended for low to medium mounting heights where dust, dirt, humidity, moisture, or corrosive elements are present. Ideal for canopies, dock areas, wastewater treatment, refrigerated areas, food processing and other non-hazardous environments. **Certain airborne contaminants can diminish integrity of acrylic.** [Click here for Acrylic Environmental Compatibility table for suitable uses.](#)

CONSTRUCTION — Housing formed from impact resistant, UV stabilized, fiberglass reinforced polyester with cold-rolled steel enclosed wireway. Poured in gasketing provides a seal between housing and diffuser. Captive, corrosion-resistant cam-action latches secure the diffuser; six on 4' units, and ten on 8' units. Stainless steel latches available.

Finish: Painted parts pretreated with a five-stage iron-phosphate process to ensure superior paint adhesion and corrosion resistance, then finished with a high-gloss, baked white enamel.

OPTICS — High-impact acrylic diffuser with a stippled interior surface to spread lamp image.

PLEASE NOTE: The standard 4' diffuser is 2-1/4" deep, and the standard 8' diffuser is 3" deep. To order the 4' diffuser so that it matches the depth of the 8' diffuser, order the ARDP option. The 8' diffuser is not available in the 2-1/4" depth.

ELECTRICAL — Thermally protected, resetting, Class P, HPF, non-PCB, UL Listed and CSA Certified ballast is standard.

AWM, TFN, THHN wire throughout, rated for required temperatures.

INSTALLATION — For unit or row installations, surface (ceiling or wall) or suspended mounting. Wall mounting; horizontal orientation only for use in damp locations.

LISTINGS — 120V, 277V and MVOLT are UL Listed and CSA Certified (standard). Listed for 25°C ambient and wet locations for covered-ceiling applications. IP65 rated. Optional IP67 rating available. Compliance to FDA/USDA requirements and/or NSF splash-zone certification.

WARRANTY — 1-year limited warranty. Complete warranty terms located at www.acuitybrands.com/CustomerResources/Terms_and_conditions.aspx

Actual performance may differ as a result of end-user environment and application.

Note: Specifications subject to change without notice.

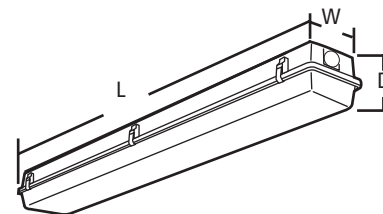
Catalog Number
Notes
Type

Enclosed and Gasketed Industrial

DMW

SLIMLINE

8' Length
One or Two Lamps



Specifications

Length:	50 (127.0)
	98 (248.9)
Width:	8-1/8 (20.6)
Fixture depth:	5-5/8 (14.3)

All dimensions are shown in inches (centimeters) unless otherwise noted.

ORDERING INFORMATION

Lead times will vary depending on options selected. Consult with your sales representative.

Example: DMW 2 96T8 120 GEB

DMW		96T8				
Series	Number of lamps	Lamp type	Diffuser	Voltage	Ballast	Options
DMW Wet location	1 2 Not included.	96T8 59W T8 Slimline (96")	(blank) 3" Deep high-impact acrylic (50% DR)	120 277 347 MVOLT others available	GEB Electronic ballasts, ≤20% THD GEB10IS Electronic ballast, ≤10% THD, instant start	EL6DW Emergency battery pack (nominal 600 lumens) ¹ EL14DW Emergency battery pack (nominal 1400 lumens) ¹ GLR Internal fast-blow fusing ² GMF Internal slow-blow fusing ² RIF1 Radio interference filter, one per fixture STSL Stainless steel latches WLF Wet location fittings (one pair; installed, top) IP67 IP67 rated; requires 14 latches CSA CSA certified (only required for 347V) NOM NOM certified CS89 6' white cord, 16/3, no plug, wet location CS88 6' Brad Harrison 16/3 cord and straight blade plug set ² MSI_ Wet location occupancy sensor pre-wired ^{2,3}

Accessories: Order as separate catalog number.	
BCD	Bracket for hanger chain mounting. Two per package ⁴
HC36	Chain hangers (1 pair, 36" long); Requires BCD
WLF	Wet location fittings (1 pair, not installed)
DMW/VRISMB	Surface mounting brackets (pair) ⁵

Notes

1. Must specify voltage; 120 or 277 only.
2. Must specify voltage. Not available with MVOLT.
3. For mounting up to 8' specify MS18; for mounting up to 20' specify MS120.
4. For stainless steel, specify STS (ex: BCD STS).
5. Brackets ship standard with fixture. For replacement purposes.

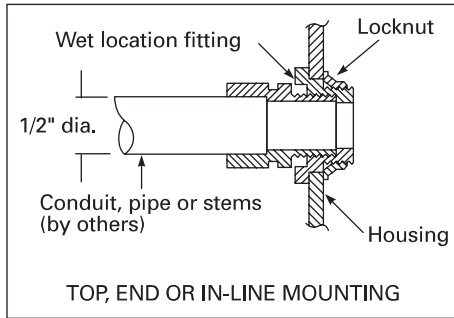
MOUNTING DATA

For unit or row installation, surface (ceiling or wall) or suspended mounting.

DMW — Drill holes through housing and channel at appropriate locations. Includes gasketed wet location fittings on ends for power feeding/mounting. Fitting is threaded for 1/2" rigid conduit (optional WLF for top mounting). Attach to surface using fasteners and sealing washers (by others) appropriate to ceiling materials.

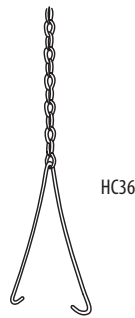
Unit installation — Minimum of two hangers required.

Row installation — Minimum of two hangers required. Recommended 1/2" nipple with union (by others) for DMW.



DIMENSIONS

Inches (centimeters). Subject to change without notice.

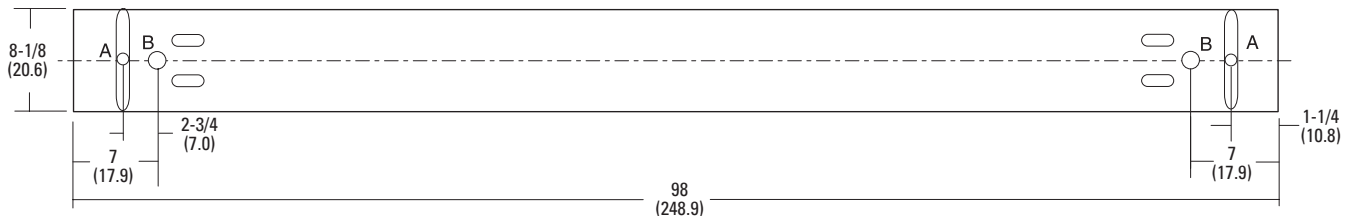
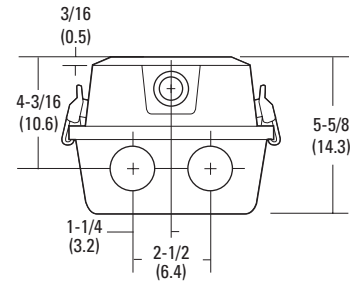
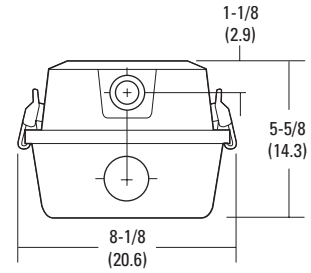


HC36

A = 11/16 (17) Dia.

B = 1-1/8 (29) Dia.

Recommended mounting locations
(field drilling required)



PHOTOMETRICS

Calculated using the zonal cavity method in accordance with IESNA LM41 procedure. Floor reflectances are 20%. Lamp configurations shown are typical. Full photometric data on these and other configurations available upon request.