

FEATURES & SPECIFICATIONS

INTENDED USE — Intended for mounting heights up to 25' that require high light levels. Ideal for the medium to heavy-duty areas, warehousing, storage or task lighting.

CONSTRUCTION — Channel and embossed reflector constructed of die-formed cold rolled steel with longitudinal V-grooves in the channel for strength. Rotor style, locking lampholders with enclosed contacts and an audible click are standard with deep endplates that exceed the height of the lampholders. Available in 4', or 8' tandem wired lengths. Accepts plug-in option for 1, 2 or 3 primary circuits.

Finish: Five-stage iron phosphate pretreatment ensuring superior paint adhesion and corrosion-resistance. Reflector and channel to be finished with a high-gloss baked white enamel. Reflector is painted after fabrication.

OPTICAL — Solid-top or apertured uplight reflector is die-embossed, constructed of heavy-gauge cold rolled steel and painted after fabrication. Baked white enamel finish standard, porcelain is available.

ELECTRICAL — Thermally protected, resetting, Class P, HPF, non-PCB, UL listed, CSA certified ballast standard. Sound rating depends on lamp/ballast combination. AWM, TFN and THHN wire used through-out, rated for required temperatures.

INSTALLATION — For unit or row installations, surface or suspended mounting.

LISTINGS — UL Listed for 25°C ambient temperatures. UL Listed (standard). CSA Certified or NOM Certified (see Options). UL Listed for damp locations.

WARRANTY — 1-year limited warranty. Full warranty terms located at www.acuitybrands.com/CustomerResources/Terms_and_conditions.aspx.

Actual performance may differ as a result of end-user environment and application.

Note: Specifications subject to change without notice.

| |
|----------------|
| Catalog Number |
| Notes |
| Type |

Heavy-Duty Industrial

AFP

HIGH OUTPUT
4' or 8' Length
1, 2, or 3 Lamps

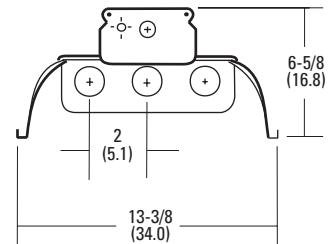
T5
Technology



Specifications

Length: 48 (121.9)
Width: 13-3/8 (34.0)
Height: 6-5/8 (16.8)
Weight: 16.3 lbs (7.4 kg)

All dimensions are inches (centimeters) unless otherwise indicated.



ORDERING INFORMATION

Lead times will vary depending on options selected. Consult with your sales representative.

Example: AFP 2 32 MVOLT GEB10IS

| Series | Number of lamps | Lamp type | Voltage | Options |
|--|-----------------|----------------------|------------------|--|
| AFPST Solid reflector | 1 | 32 32W T8 (48") | 120 | GEB10IS Electronic ballast, ≤10% THD, instant start, T8 |
| AFP 10% uplight apertured reflector | 2 | 28 28W T5 (46") | 277 | GEB10PS Electronic ballast, ≤10% THD, program start |
| For tandem double-length unit, add prefix T. Example: TAFPST | 3 | 545T5HO 54W T5 (46") | 347 | EL14 Emergency battery pack (nominal 1400 lumens), see Life Safety Section ^{1,2} |
| | Not included | | MVOLT | EL55 Emergency battery pack (nominal 390-700 lumens), see Fluorescent Battery Pack Section ^{1,2} |
| | | | Others available | GLR Internal fast-blow fusing (add X for external) ² |
| | | | | GMF Internal slow-blow fusing (add X for external) ² |
| | | | | PLF Plug-in wiring, Specify 1, 2 or 3 branch circuits & hot wires (A = black, B = red, C = blue, AB or AC) |
| | | | | TILW Tandem in-line wiring |
| | | | | PAF Paint after fabrication |
| | | | | SSR Specular silver reflector finish (95% reflective) |
| | | | | CSA CSA Certified |
| | | | | NOM NOM Certified |

Accessories: Order as separate catalog number.

| | |
|----------|--|
| ACEP | Full-depth endplates (1 pair) |
| HRUN | Hooker® T-bar hanger for 5" channel (flush to ceiling) |
| HRUN1 | Hooker® T-bar hanger for 5" channel (1-1/2" from ceiling) |
| SQ_ | Swivel-stem hanger (specify length in 2" increments) |
| 1B | Ceiling spacer (1-1/2" to 2-1/2" from ceiling). |
| HC36 | Chain hangers (1 pair, 36" long). |
| THUN | Tong hanger for 5" channel |
| WGAFPV | Wire guard, 4' white, for AF or PV (order 2 for 8' fixtures) |
| DLAF ME | 4' 30° x 30° metal eggcrate louver (order 2 for 8' fixtures) |
| DLAF A12 | 4' framed acrylic prismatic lens (order 2 for 8' fixtures) |

Notes

- Specify voltage; 120 or 277 only.
- Not available with MVOLT.

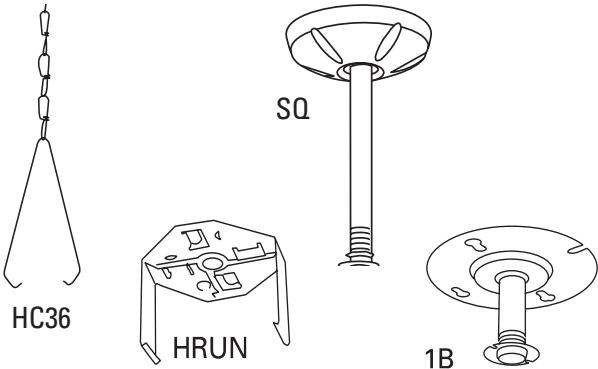
MOUNTING DATA

For unit or row installation. Surface or suspended mounting.

UNIT INSTALLATION — two hanging devices per fixture required

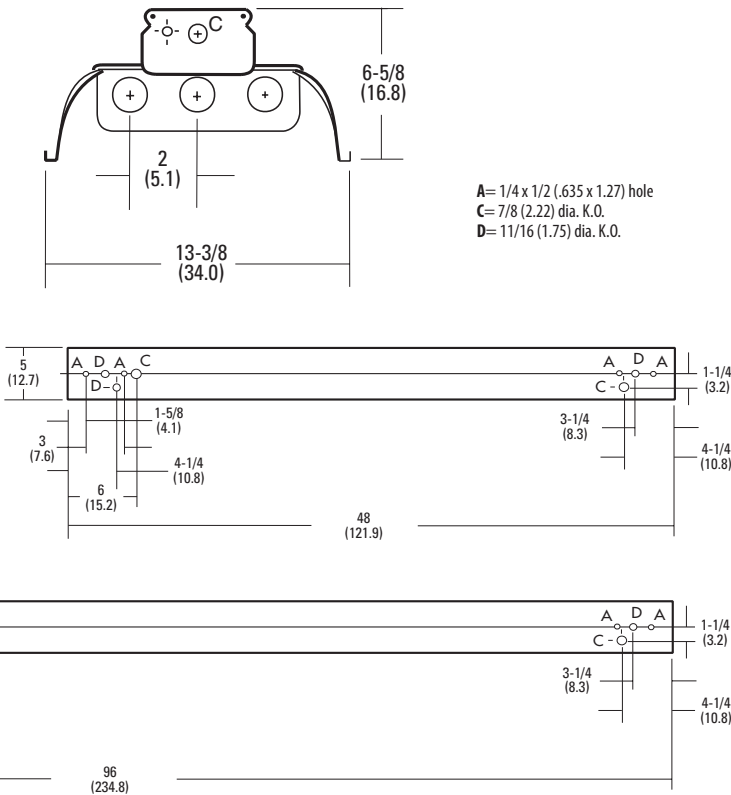
ROW INSTALLATION — one hanging device per fixture plus one per row required

HOOKER® (HRUN) and HC Hangers — minimum two per channel (unit and row)



DIMENSIONS

Inches (centimeters). Subject to change without notice.



| Cord Set Option | |
|---|-----------------------|
| Add suffix to end of catalog number, specify voltage. | |
| All cord sets are 6', black. Other configurations available, consult factory. | |
| Suffix | Description |
| CS1 | Straight plug, 120V |
| CS3 | Twist lock, 120V |
| CS7 | Straight plug, 277V |
| CS11 | Twist-lock, 277V |
| CS25 | Twist-lock, 347V |
| CS97 | Twist-lock, 480V |
| CS93 | 600V SO cord, no plug |

| Energy (Calculated in accordance with NEMA standard LE-5) | | | | | |
|---|---------------------|------------------|-------------|---------------|-------|
| LER.FL | ANNUAL ENERGY COST* | LAMP DESCRIPTION | LAMP LUMENS | BALLST FACTOR | WATTS |
| 72 | \$3.31 | F54T5HO | 4,450 | 1 | 117 |
| *Based on 3000 hrs./ year at .08/kwh | | | | | |

High Output T5

PHOTOMETRICS

See www.lithonia.com.