

PHILIPS LIGHTOLIER

Downlighting

LyteCaster

6" Round downlight
1500 Lumens



Project: _____
Location: _____
Cat.No: _____
Type: _____
Lamps: _____ Qty: _____
Notes: _____

Philips Lightolier LyteCaster LED Downlights feature a 3.5" luminaire height that conserves plenum space without compromising the 70° physical and reflected cutoff. The modular and interchangeable light engine allows for an easy future upgrade. The downlight is wet location listed and comes in 3 standard options.

Complete product = Frame-in kit + Adjustable light engine / Trim Order each separately

Ordering guide: Frame-In kit

Example: L6RAE1VA

Series	Frame type	Dimming	Input voltage	Version
L6R				VA
L6R LyteCaster 6" Round	A AirSeal IC, New Construction, Screw AN AirSeal IC, New Construction, Nail	E ELV dimming	1 120V	VA Version A ¹
		Z10 0-10V	U Universal	

Ordering guide: Light engine

Example: L6R15827VA

Series	Lumens	CRI	CCT	Version
L6R	15			VA
L6R LyteCaster 6" Round	15 1500	8 80	27 2700K	VA Version A ¹
			30 3000K	
			35 3500K	
			40 4000K	
		9 90	27 2700K	

Note: Lumen output is calculated based on 80 CRI and 3500K CCT. Please consult adjustment factors table on page 4 for other lumen outputs.

Ordering guide: Trim

Example: L6RDW

Series	Luminaire type	Finish
L6R		
L6R LyteCaster 6" Round	D Open Downlight	D Clear diffuse (with white flange) W White (with white flange)
	B Baffle Downlight	W White (with white flange)

1. Version A (VA) frames and light engines are not compatible with previous versions.

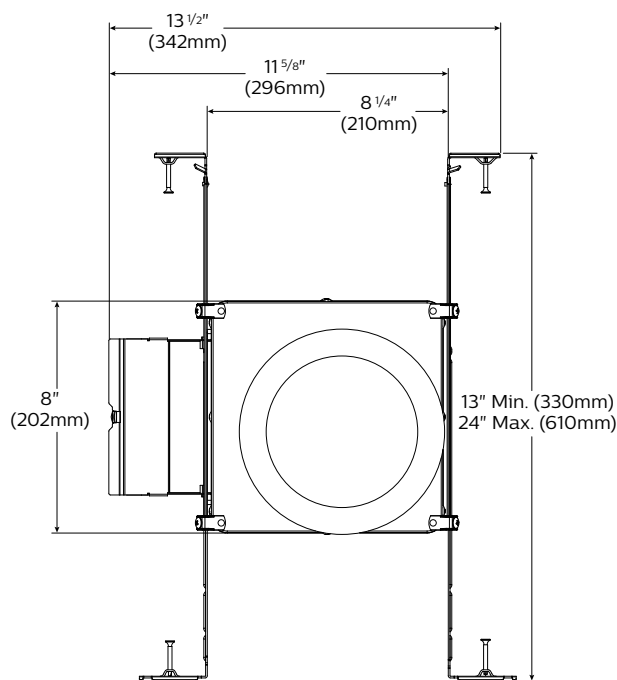


L6R LyteCaster 6" Round

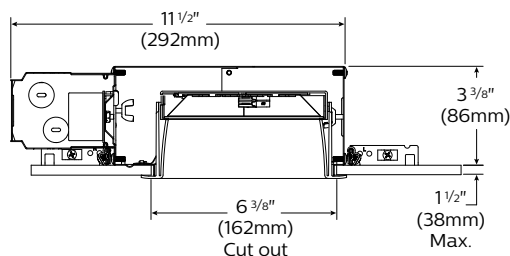
General purpose downlight, 1500 lumens

Frame-in kit

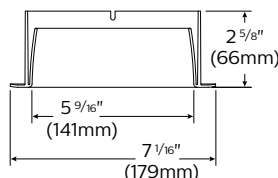
Bottom view



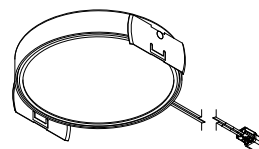
Side view



Downlight trim



Light engine



Features

- Housing:** .026" galvanized steel. UL listed for direct contact with thermal insulation. Airseal® housing minimizes air leakage to less than 2 CFM at 1.57PSF (or 75PA), which complies with Title 24, the International Energy Conservation Code, and Washington State Energy Code (Section 502.4). This reduces heat loss and condensation in ceiling. Access door for inspection of junction box.
- Lower frame and top cover:** .026" galvanized steel. Accommodates ceilings up to 1 1/2" (38mm) thick. 3/8" (9.5mm) deep integral lip with four notches at 90° apart to simplify alignment. Locks into position along length of mounting bars with locking screws.
- Junction Box:** 2.5" X 5 3/8" X 2" (27 cu. in) .032" galvanized steel. UL listed 90° supply conductors. Rated for branch circuit wiring supplying connected luminaires (daisy chaining).
- Retaining clips:** Permit easy and fast installation of light engine/trim.
- Mounting bars:** .059" galvanized steel. Bars pivot for easy attachment and wire-in below ceiling line. Bars extend to accommodate 16" (406mm) to 24" (610mm) O.C. joist spacing. Bars can accommodate 12" (305mm) O.C. joist spacing after a slight field modification (see Instruction sheet). Features integral self tapping phillips/square drive screws for secure attachment to wood or metal construction. Also available with integral nails. Attaches to T-bar ceilings without the need of accessories. Bars installed on shortest dimension of frame, but can be easily repositioned 90 degrees from original position.

- Driver:** ELV: 120V, 50/60Hz. RoHS compliant, Class 2 power supply. Complies with FCC rules per Title 47 Part 15 (Class B) for EMI/RFI (conducted & radiated). Class A sound rating. 0-10V: 120/277V, 50/60Hz. RoHS compliant, Class 2 power supply. Complies with FCC rules per Title 47 Part 15 (Class A) for EMI/RFI (conducted & radiated). Class A sound rating.
- Ceiling cutout:** 6 3/8" (162mm).

Options and Accessories

For fire rated box accessory, use Fireline:

16FR2X10	16" on center 2x10 construction
16FR2X6	16" on center 2x6 construction

See Fireline spec sheets for more information.

Electrical

Lifetime: Expected lifetime 50,000 hours and backed by a 5-year warranty. (see Philips.com/warranties for details)

Recommended dimmers

See LED-DIM Specification Sheet.

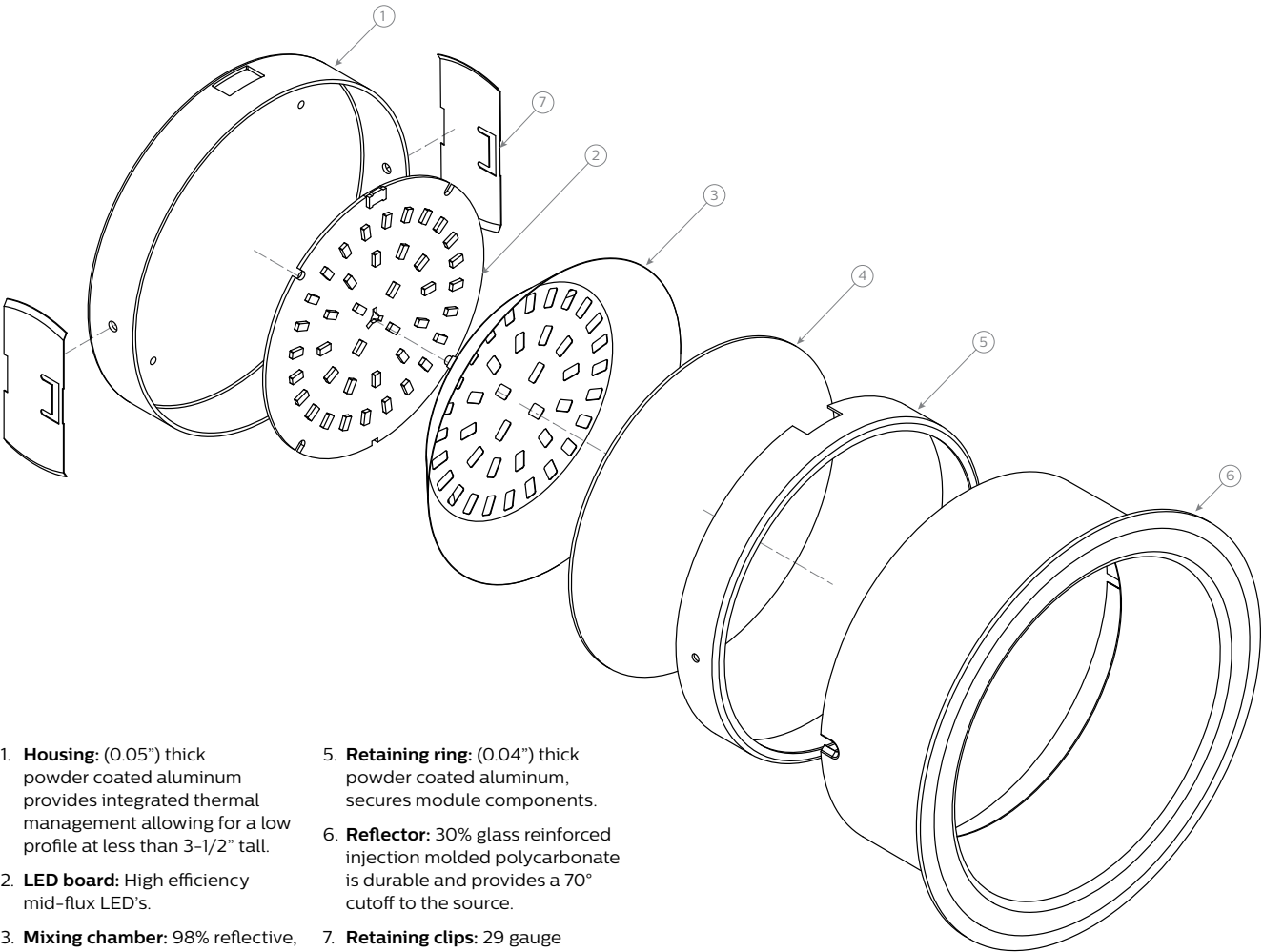
Labels

cULus Listed Type I.C. frames are suitable for damp location. Trims are cULus suitable for wet location (no shower lens unit required). Complies with Air Leakage.

L6R LyteCaster 6" Round

General purpose downlight, 1500 lumens

Reflector: Round downlight



1. **Housing:** (0.05") thick powder coated aluminum provides integrated thermal management allowing for a low profile at less than 3-1/2" tall.
2. **LED board:** High efficiency mid-flux LED's.
3. **Mixing chamber:** 98% reflective, highly diffuse film.
4. **Diffusion lens:** (0.06") thick acrylic opal lens provides an even source of illumination.
5. **Retaining ring:** (0.04") thick powder coated aluminum, secures module components.
6. **Reflector:** 30% glass reinforced injection molded polycarbonate is durable and provides a 70° cutoff to the source.
7. **Retaining clips:** 29 gauge Stainless Steel, allows tool-less installation of light engine to trim.

Electrical

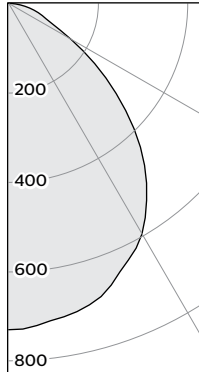
Screw / Nail Frame-in kit Electrical specifications	Input volts	Input freq.	Input current	LED drive current	Input power	LED power	THD factor	Power factor
L6RAE1VA	120V	50/60Hz	0.14A	350mA	16W	13W	<20%	>0.9
L6RAZ10UVA	120V	50/60Hz	0.14A	350mA	17W	13W	<10%	>0.9
	277V	50/60Hz	0.07A	350mA	17W	15W	<15%	>0.9

L6R LyteCaster 6" Round

General purpose downlight, 1500 lumens

80 CRI, 1500 lumens

Candela Curves



Frame: L6RAE1VA
Light engine: L6R15835VA
Trim: L6RDW

Output lumens: 1599 lm
Input Watts: 16 W
Spacing Criterion: 1.2

Angle	Mean CP	Lumens
0	730	
5	724	69
10	412	
15	698	197
20	671	
25	634	292
30	596	
35	538	336
40	473	
45	397	304
50	314	
55	235	210
60	161	
65	107	111
70	80	
75	59	62
80	37	
85	16	18
90	0	

Single unit data

Height to Lighted Plane	Initial Center Beam Foot-Candles	Beam Dia. (ft)*
5'	29	6.0'
6'	20	7.2'
7'	15	8.4'
8'	11	9.6'
9'	9	10.8'

* Beam diameter is where foot-candles drop to 50% of maximum.

Multiple unit data - RCR 2

Spacing on center	Initial Center Beam Foot-Candles	Watts per Sq. Ft.
5'	66.8	0.71
6'	43.8	0.47
7'	31.3	0.33
8'	26.1	0.28
9'	20.9	0.22

38'x38'x10' Room, Workplane 2.5' above floor, 80/50/20% Reflectances

Coefficients of utilization

Ceiling	80%				70%		50%		30%		0%	
Wall	70	50	30	10	50	10	50	10	50	10	0	
RCR	Zonal cavity method - Effective floor reflectance = 20%											
Room Cavity Ratio	0	119	119	119	119	116	116	111	111	106	106	100
	1	110	106	102	99	104	97	100	94	96	92	87
	2	102	94	88	83	92	82	89	80	86	79	75
	3	94	84	77	71	83	71	80	69	77	68	65
	4	86	76	68	62	74	61	72	60	70	60	57
	5	80	68	60	54	67	54	65	53	63	53	50
	6	74	62	54	48	61	48	59	47	58	47	45
	7	69	57	48	43	56	43	54	42	53	42	40
	8	65	52	44	38	51	38	50	38	49	38	36
	9	60	48	40	35	47	35	46	35	45	34	33
10	57	44	37	32	44	32	43	32	42	31	30	

Zonal lumens & percentages

Zone	Lumens	%Luminaire
0-30	5558	347.6%
0-40	893	55.9%
0-60	1408	88.1%
0-90	1599	100.0%

CRI and CCT adjustment factors

90CRI 2700K: = 0.71
80CRI 2700K: = 0.89
80CRI 3000K: = 0.97
80CRI 3500K: = 1.00

1. Wattage: controlled to within $\pm 5\%$
2. Correlated Color Temperature: within specs as defined in ANSI_NEMA_ANSLG C78.377-2008: Specifications for the Chromaticity of Solid State Lighting Products.
3. Tested using absolute photometry as specified in LM79: IESNA Approved Method for the Electrical and Photometric Measurements of Solid-State Lighting Products.

© 2015 Koninklijke Philips N.V. All rights reserved.
Philips reserves the right to make changes in specifications and/or to discontinue any product at any time without notice or obligation and will not be liable for any consequences resulting from the use of this publication.
philips.com/luminaires



Philips Lighting, North America Corporation
200 Franklin Square Drive, Somerset, NJ 08873
Tel. 855-486-2216

Philips Lighting Canada Ltd.
281 Hillmount Rd, Markham, ON, Canada L6C 2S3
Tel. 800-668-9008