

1101 Rectangular Boxes—Covers & Flanges

CATALOG #	DESCRIPTION
1101-SMB	One gang, deep stamped steel floor box »»» 3 7/8" H x 4 13/16" L x 4 13/16" W; 50.3 Cu. In.
1102-SMB	Two gang, deep stamped steel floor box »»» 3 7/16" H x 7 7/8" L x 4 13/16" W; 48.5 Cu. In. per gang
1103-SMB	Three gang, deep stamped steel floor box »»» 3 3/8" H x 11 1/16" L x 4 11/16" W; 38.3 Cu. In. per gang
SH-1101-SMB	One gang, shallow stamped steel floor box »»» 2 13/16" H x 4 13/16" L x 4 13/16" W; 31.5 Cu. In.
SH-1102-SMB	Two gang, shallow stamped steel floor box »»» 2 9/16" H x 7 7/8" L x 4 13/16" W; 33.5 Cu. In. per gang
SH-1103-SMB	Three gang, shallow stamped steel floor box »»» 2 15/32" H x 11 1/16" L x 4 11/16" W; 25.5 Cu. In. per gang
1101-DBE ① ②	One gang, brass frame »»» 4 5/16" L x 3 11/32" W
1102-DBE ① ②	Two gang, brass frame »»» 6 3/8" L x 4 3/8" W
1103-DBE ① ②	Three gang, brass frame »»» 9 5/16" L x 4 5/16" W

① Add -A for Aluminum tile frame; ② Add -B for Brass tile frame

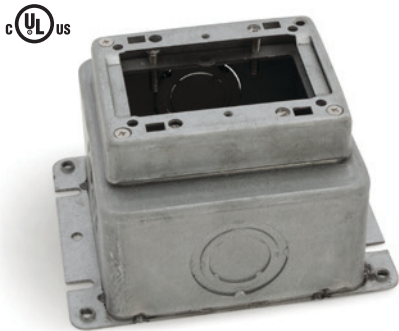
>>>> All boxes UL listing #514A

>>>> Tile frames not included with stamped steel floor box. All tile frames 5/8" overall height

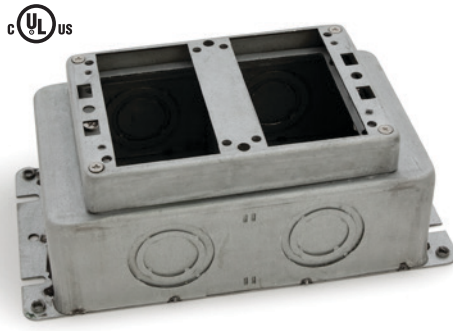
>>>> All boxes pre-pour adjustment of 2 1/4" and after pour adjustment 1/2"

>>>> Knockouts: Deep – Sides and Bottom: 3/4", 1", 1 1/4"; Shallow – Sides: 1/2" and 3/4"; Bottom: 3/4", 1" and 1 1/4"

1101-SMB



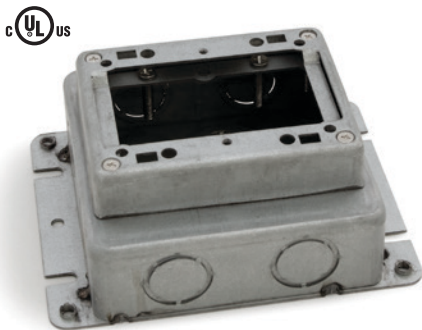
1102-SMB



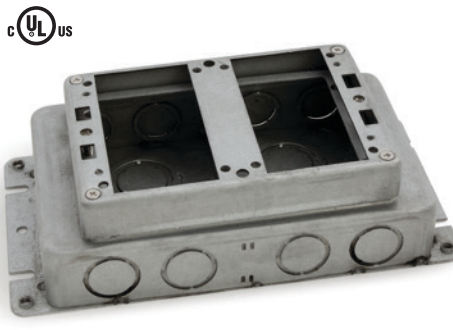
1103-SMB



SH-1101-SMB



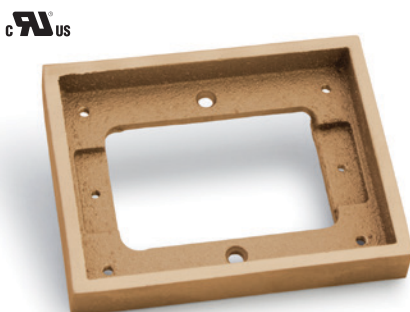
SH-1102-SMB



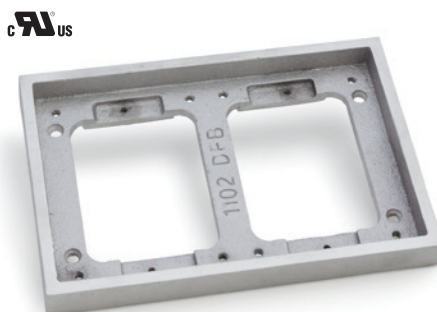
SH-1103-SMB



1101-DBE-B



1102-DBE-A



1103-DBE-B

