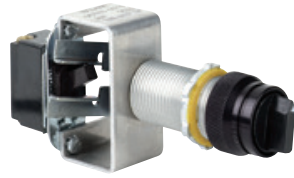




SPECIALTY OPERATORS

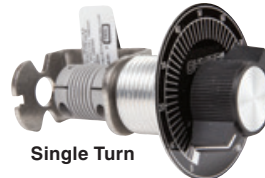


Snap Switch



Multi Turn

Potentiometer and Rheostat
(electrical device not included)



Single Turn

Class I, Div. 1 & 2, Groups B, C, D^①
Class I, Zones 1 & 2, Groups IIB, IIA
Class II, Div. 1 & 2, Groups E, F, G
Class III
NEMA 3, 4, 4X, 7 (B, C, D) 9 (E, F, G)

See Area Classification Chart
page C62 for Details

Certified - File LR11714
See files for details or call Killark.



Rotary or Motor Shaft



Capillary Seal



Reset

FEATURES-SPECIFICATIONS

G SNAP SWITCH OPERATOR					
CATALOG NUMBER ^①		TYPE SWITCH	RATINGS		NAMEPLATE MARKING ^②
SHORT ^④	LONG		125 VAC	250 VAC	
GO30-31F	GO10-31F N34	SPST	10 AMP	5 AMP	OFF/ON OR BLANK
GO30-33F	GO10-33F N34	SPDT (3-WAY)	10 AMP	10 AMP	OFF/ON OR BLANK

(UL File E10501)

G ROTARY OR MOTOR SHAFT OPERATOR			
CATALOG NUMBER ^①	SHAFT DIAMETER	TYPE	DESCRIPTION ^①
GO-16 ^⑤	1/4"	MALE-FEMALE	Rotary or motor shaft operator used to transfer rotary motion through wall of explosion proof enclosure.
GO-18 ^⑤	3/8"		
GO-17 ^⑤	1/4"	MALE-MALE	
GO-19 ^⑤	3/8"		
GO-51	1/2"		

G POTENTIOMETERS AND RHEOSTATS OPERATOR				
CATALOG NUMBER ^①			TYPE	DESCRIPTION ^①
SHORT ^④	LONG	EXTENDED		
GO133	GO113 N34	GOL113	SINGLE TURN	Control operator for use with potentiometers or rheostats having a 1/4" diameter by 7/8" long shaft.
GO134	GO114 N34	GOL114	TWENTY TURN	

(UL File E150827)

G CAPILLARY SEALS			
CATALOG NUMBER ^①	CAPILLARY SIZE	TYPE	DESCRIPTION ^①
GO-11388-078 ^⑤	0.078± .002 DIA.	ACCEPTS CAPILLARY WITH MAX. BULB DIA. OF 9/16".	Use where a mechanical means for passing a thermostat or similar capillary tube through the wall of a hazardous location enclosure.
GO-11372-093 ^⑤	0.093± .002 DIA.		

G RESET OPERATOR				
CATALOG NUMBER ^①			NAMEPLATE ^②	TYPE OPERATION ^①
SHORT ^④	LONG	EXTENDED		
GO40-KX2C	GO-RST	GOLRST	RESET OR BLANK	Black plunger type reset operator, supplied with a 6" long fiber extension which can be removed or cut to desired length.

(UL File E150827)

^① Refer to catalog page C62 to select proper operator for enclosure, pages C70 & C71 for Accessories, page C62 for complete details on Area Classification of operators, page C74 for Dimensional Information.

^② Nameplates are double sided.

^③ GO40 series reset button is suitable for Class II E, F, and G locations only.

^④ Short style operators are suitable for Class I Group C & D, Class II Group E, F, G only.

^⑤ These devices are not UL or CSA approved.