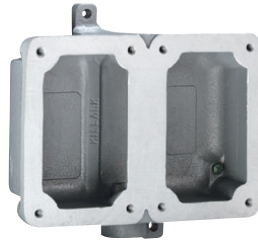




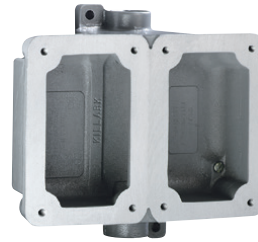
FACTORY SEALED SPLICE BOXES / SEALING METHODS



FXB-2
Dead End **FXB-5**
Feed Thru



FXB-8
Double Gang Dead End



FXB-11
Double Gang Feed Thru

Class I, Div. 1 & 2, Groups C,D
Class I, Zones 1 & 2, Groups IIB, IIA
Class II, Div. I & 2, Groups E,F,G
Class III
NEMA 3, 7(C,D) 9(E,F,G)

LISTED - File E53360

Certified- File LR11714
See files for details or call Killark.

FEATURES-SPECIFICATIONS

Splice Boxes

The FXB Series of splice boxes are designed for use with the FXCS and FXS Series of cover sub-assemblies.

FXB BACK BOX SELECTION AND DIMENSIONS							
CATALOG NUMBER	DESCRIPTION	HUB SIZE	EXTERNAL			MOUNTING	
			LENGTH	WIDTH	DEPTH	VERTICAL	HORIZONTAL
FXB-1	SINGLE GANG/DEAD-END	1/2"	6-13/16"	3-11/16"	1-3/4"	6-3/16"	2-1/4"
FXB-2	SINGLE GANG/DEAD-END	3/4"	6-13/16"	3-11/16"	1-3/4"	6-3/16"	2-1/4"
FXB-3	SINGLE GANG/DEAD-END	1"	6-13/16"	3-11/16"	1-3/4"	6-3/16"	2-1/4"
FXB-4	SINGLE GANG/FEED-THRU	1/2"	6-13/16"	3-11/16"	1-3/4"	6-3/16"	2-1/4"
FXB-5	SINGLE GANG/FEED-THRU	3/4"	6-13/16"	3-11/16"	1-3/4"	6-3/16"	2-1/4"
FXB-6	SINGLE GANG/FEED-THRU	1"	6-13/16"	3-11/16"	1-3/4"	6-3/16"	2-1/4"
FXB-7	DOUBLE GANG/DEAD-END	1/2"	6-13/16"	7-17/32"	2	6-3/16"	2-1/4"
FXB-8	DOUBLE GANG/DEAD-END	3/4"	6-13/16"	7-17/32"	2	6-3/16"	2-1/4"
FXB-9	DOUBLE GANG/DEAD-END	1"	7	7-17/32"	2	6-3/16"	2-1/4"
FXB-10	DOUBLE GANG/FEED-THRU	1/2"	6-13/16"	7-17/32"	2	6-3/16"	2-1/4"
FXB-11	DOUBLE GANG/FEED-THRU	3/4"	6-13/16"	7-17/32"	2	6-3/16"	2-1/4"
FXB-12	DOUBLE GANG/FEED-THRU	1"	7	7-17/32"	2	6-3/16"	2-1/4"

FXB BLANK COVER	
CATALOG NUMBER	DESCRIPTION
FX-10	BLANK COVER FOR FXB



FXB SPACER ①	
CATALOG NUMBER	DESCRIPTION
FXB075SPCR	SPACER, 3/4" ADDITIONAL DEPTH
FXB10SPCR	SPACER, 1" ADDITIONAL DEPTH
FXB15SPCR	SPACER, 1 1/2" ADDITIONAL DEPTH
FXB20SPCR	SPACER, 2" ADDITIONAL DEPTH

① When using FXB spacers, application of hazardous area derates control station to Class I Div. 2, Class II, III Grps. C,D,E,F,G hazardous locations only

