

### TYPE GGB

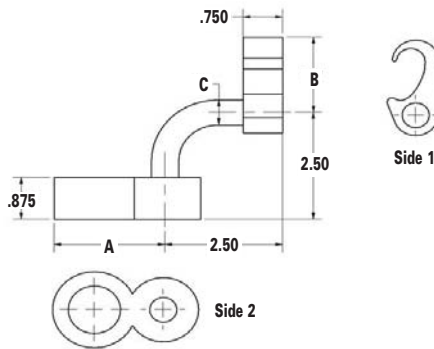
#### Features

- Manufactured from high strength copper alloy
- Clearly marked with wire size and die index
- Each size accepts a wide range of cable sizes
- Side 1 & Side 2 can be rotated to any position before crimping
- UL Listed and CSA Certified for grounding and bonding
- Prefilled with DE-OX® oxide inhibiting compound
- TN in catalog number designates tin plated

#### Benefits

- Provides maximum conductivity
- Provides easy identification and tooling recommendation
- Application flexibility and reduced inventory
- Ease of installation
- Direct burial in earth or concrete
- Prevents oxides from forming
- For use with galvanized steel ground rod

**A**



Catalog Number	Commercial Copper Cable Range Side 1	Metric Copper Cable Range Side 1	Copper Weld Cable Range Side 1	Ground Rod Diameter Side 2	Rebar Side 2	Dimensions - in. (mm)		
						A	B	C
GGB-1	250kcmil (.575 dia.) thru 2str (.292 dia.)	120mm <sup>2</sup> (14.40mm dia.) thru 35mm <sup>2</sup> (7.62mm dia.)	248.8kcmil (.572 dia.) thru 91.65kcmil (.343 dia.)	1/2"	#3	1.390 (35.3)	1.660 (42.2)	0.312 (7.9)
GGB-2	250kcmil (.575 dia.) thru 2str (.292 dia.)	120mm <sup>2</sup> (14.40mm dia.) thru 35mm <sup>2</sup> (7.62mm dia.)	248.8kcmil (.572 dia.) thru 91.65kcmil (.343 dia.)	5/8"	#4	1.455 (37.0)	1.660 (42.2)	0.312 (7.9)
GGB-3	250kcmil (.575 dia.) thru 2str (.292 dia.)	120mm <sup>2</sup> (14.40mm dia.) thru 35mm <sup>2</sup> (7.62mm dia.)	248.8kcmil (.572 dia.) thru 91.65kcmil (.343 dia.)	3/4"	#5	1.644 (41.8)	1.660 (42.2)	0.500 (12.7)
GGB-4	250kcmil (.575 dia.) thru 2str (.292 dia.)	120mm <sup>2</sup> (14.40mm dia.) thru 35mm <sup>2</sup> (7.62mm dia.)	248.8kcmil (.572 dia.) thru 91.65kcmil (.343 dia.)	1"	#6-7	2.025 (51.4)	1.677 (42.6)	0.500 (12.7)
GGB-5	500kcmil (.813 dia.) thru 250kcmil (.575 dia.)	240mm <sup>2</sup> (20.35mm dia.) thru 120mm <sup>2</sup> (14.40mm dia.)	498.8kcmil (.810 dia.) thru 248.8kcmil (.572 dia.)	1/2"	#3	1.390 (35.3)	2.075 (52.7)	0.312 (7.9)
GGB-6	500kcmil (.813 dia.) thru 250kcmil (.575 dia.)	240mm <sup>2</sup> (20.35mm dia.) thru 120mm <sup>2</sup> (14.40mm dia.)	498.8kcmil (.810 dia.) thru 248.8kcmil (.572 dia.)	5/8"	#4	1.455 (37.0)	2.075 (52.7)	0.312 (7.9)
GGB-7	500kcmil (.813 dia.) thru 250kcmil (.575 dia.)	240mm <sup>2</sup> (20.35mm dia.) thru 120mm <sup>2</sup> (14.40mm dia.)	498.8kcmil (.810 dia.) thru 248.8kcmil (.572 dia.)	3/4"	#5	1.644 (41.8)	2.075 (52.7)	0.500 (12.7)
GGB-8	500kcmil (.813 dia.) thru 250kcmil (.575 dia.)	240mm <sup>2</sup> (20.35mm dia.) thru 120mm <sup>2</sup> (14.40mm dia.)	498.8kcmil (.810 dia.) thru 248.8kcmil (.572 dia.)	1"	#6-7	2.025 (51.4)	2.075 (52.7)	0.500 (12.7)
GGB-3TN	250kcmil (.575 dia.) thru 2str (.292 dia.)	120mm <sup>2</sup> (14.40mm dia.) thru 35mm <sup>2</sup> (7.62mm dia.)	248.8kcmil (.572 dia.) thru 91.65kcmil (.343 dia.)	3/4"	N/A	1.644 (41.8)	1.660 (42.2)	0.500 (12.7)
GGB-6TN	500kcmil (.813 dia.) thru 250kcmil (.575 dia.)	240mm <sup>2</sup> (20.35mm dia.) thru 120mm <sup>2</sup> (14.40mm dia.)	498.8kcmil (.810 dia.) thru 248.8kcmil (.572 dia.)	5/8"	N/A	1.455 (37.0)	2.075 (52.7)	0.312 (7.9)

All wire sizes, unless noted otherwise, are American Wire Gauge (AWG)  
Tested to UL467, UL File E34440

#### Notes:

1. When used with ground rods, it is recommended to rough up the end of ground rod where GGB is to be placed. This provides good rotational resistance. **Perform a "pre-crimp" on ground rod prior to installing GGB connector. Use an indent type of die such as Burndy's U2CABT (Die Index #348) or UPRECRIMP-12, -58, -34.**
2. UPRECRIMP and U2CABT are registered trademarks of Burndy/FCI

# Compression Grounding

## Figure 6 - 8 Grounding Grid Tooling

**A**

### TYPE GGB

#### Features

- Manufactured from high strength copper alloy
- Clearly marked with wire size and die index
- Each size accepts a wide range of cable sizes
- Side 1 & Side 2 can be rotated to any position before crimping
- UL Listed and CSA Certified for grounding and bonding
- Prefilled with DE-OX® oxide inhibiting compound
- TN in catalog number designates tin plated

#### Benefits

- Provides maximum conductivity
- Provides easy identification and tooling recommendation
- Application flexibility and reduced inventory
- Ease of installation
- Direct burial in earth or concrete
- Prevents oxides from forming
- For use with galvanized steel ground rod

Catalog Number	INSTALLATION TOOLING					
	ILSCO		Burdny		Thomas & Betts (w/Burdny Dies)	
	ILC-12-N, ILC-12H-N, ILCB-12-N & ILC-15 Series† Die (No. of Crimps)		Y35, Y39, Y46, Y750, PAT750 & PAT46 Series Die (No. of Crimps)		TBM14, TBM15, BPLT14 & BPLT15 Series, 1300A Die (No. of Crimps)	
	Side 1	Side 2	Side 1	Side 2	Side 1	Side 2
GGB-1	997 (1)	998 (1)	997 (1)	998 (1)	997 (1)	998 (1)
GGB-2	997 (1)	998 (1)	997 (1)	998 (1)	997 (1)	998 (1)
GGB-3	997 (1)	998 (1)	997 (1)	998 (1)	997 (1)	998 (1)
GGB-4	997 (1)	998 (1)	997 (1)	998 (1)	997 (1)	998 (1)
GGB-5	998 (1)	998 (1)	998 (1)	998 (1)	998 (1)	998 (1)
GGB-6	998 (1)	998 (1)	998 (1)	998 (1)	998 (1)	998 (1)
GGB-7	998 (1)	998 (1)	998 (1)	998 (1)	998 (1)	998 (1)
GGB-8	998 (1)	998 (1)	998 (1)	998 (1)	998 (1)	998 (1)
GGB-3TN	997 (1)	998 (1)	997 (1)	998 (1)	997 (1)	998 (1)
GGB-6TN	998 (1)	998 (1)	998 (1)	998 (1)	998 (1)	998 (1)

997 and 998 are Burdny die indexes

† Adaptor required when using ILC-15 Series tools

# Compression Grounding

## Figure 6 - 8 Grounding Grid

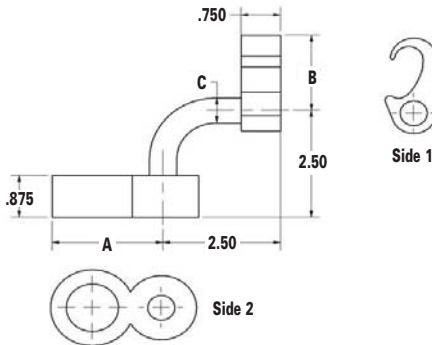
### TYPE GGB

#### Features

- Manufactured from high strength copper alloy
- Clearly marked with wire size and die index
- Each size accepts a wide range of cable sizes
- Side 1 & Side 2 can be rotated to any position before crimping
- UL Listed and CSA Certified for grounding and bonding
- Prefilled with DE-OX® oxide inhibiting compound
- TN in catalog number designates tin plated

#### Benefits

- Provides maximum conductivity
- Provides easy identification and tooling recommendation
- Application flexibility and reduced inventory
- Ease of installation
- Direct burial in earth or concrete
- Prevents oxides from forming
- For use with galvanized steel ground rod



Catalog Number	Commercial Copper Cable Range Side 1	Metric Copper Cable Range Side 1	Copper Weld Cable Range Side 1	Ground Rod Diameter Side 2	Rebar Side 2	Dimensions - in. (mm)		
						A	B	C
GGB-1	250kcmil (.575 dia.) thru 2str (.292 dia.)	120mm <sup>2</sup> (14.40mm dia.) thru 35mm <sup>2</sup> (7.62mm dia.)	248.8kcmil (.572 dia.) thru 91.65kcmil (.343 dia.)	1/2"	#3	1.390 (35.3)	1.660 (42.2)	0.312 (7.9)
GGB-2	250kcmil (.575 dia.) thru 2str (.292 dia.)	120mm <sup>2</sup> (14.40mm dia.) thru 35mm <sup>2</sup> (7.62mm dia.)	248.8kcmil (.572 dia.) thru 91.65kcmil (.343 dia.)	5/8"	#4	1.455 (37.0)	1.660 (42.2)	0.312 (7.9)
GGB-3	250kcmil (.575 dia.) thru 2str (.292 dia.)	120mm <sup>2</sup> (14.40mm dia.) thru 35mm <sup>2</sup> (7.62mm dia.)	248.8kcmil (.572 dia.) thru 91.65kcmil (.343 dia.)	3/4"	#5	1.644 (41.8)	1.660 (42.2)	0.500 (12.7)
GGB-4	250kcmil (.575 dia.) thru 2str (.292 dia.)	120mm <sup>2</sup> (14.40mm dia.) thru 35mm <sup>2</sup> (7.62mm dia.)	248.8kcmil (.572 dia.) thru 91.65kcmil (.343 dia.)	1"	#6-7	2.025 (51.4)	1.677 (42.6)	0.500 (12.7)
GGB-5	500kcmil (.813 dia.) thru 250kcmil (.575 dia.)	240mm <sup>2</sup> (20.35mm dia.) thru 120mm <sup>2</sup> (14.40mm dia.)	498.8kcmil (.810 dia.) thru 248.8kcmil (.572 dia.)	1/2"	#3	1.390 (35.3)	2.075 (52.7)	0.312 (7.9)
GGB-6	500kcmil (.813 dia.) thru 250kcmil (.575 dia.)	240mm <sup>2</sup> (20.35mm dia.) thru 120mm <sup>2</sup> (14.40mm dia.)	498.8kcmil (.810 dia.) thru 248.8kcmil (.572 dia.)	5/8"	#4	1.455 (37.0)	2.075 (52.7)	0.312 (7.9)
GGB-7	500kcmil (.813 dia.) thru 250kcmil (.575 dia.)	240mm <sup>2</sup> (20.35mm dia.) thru 120mm <sup>2</sup> (14.40mm dia.)	498.8kcmil (.810 dia.) thru 248.8kcmil (.572 dia.)	3/4"	#5	1.644 (41.8)	2.075 (52.7)	0.500 (12.7)
GGB-8	500kcmil (.813 dia.) thru 250kcmil (.575 dia.)	240mm <sup>2</sup> (20.35mm dia.) thru 120mm <sup>2</sup> (14.40mm dia.)	498.8kcmil (.810 dia.) thru 248.8kcmil (.572 dia.)	1"	#6-7	2.025 (51.4)	2.075 (52.7)	0.500 (12.7)
GGB-3TN	250kcmil (.575 dia.) thru 2str (.292 dia.)	120mm <sup>2</sup> (14.40mm dia.) thru 35mm <sup>2</sup> (7.62mm dia.)	248.8kcmil (.572 dia.) thru 91.65kcmil (.343 dia.)	3/4"	N/A	1.644 (41.8)	1.660 (42.2)	0.500 (12.7)
GGB-6TN	500kcmil (.813 dia.) thru 250kcmil (.575 dia.)	240mm <sup>2</sup> (20.35mm dia.) thru 120mm <sup>2</sup> (14.40mm dia.)	498.8kcmil (.810 dia.) thru 248.8kcmil (.572 dia.)	5/8"	N/A	1.455 (37.0)	2.075 (52.7)	0.312 (7.9)

All wire sizes, unless noted otherwise, are American Wire Gauge (AWG)  
Tested to UL467, UL File E34440

#### Notes:

1. When used with ground rods, it is recommended to rough up the end of ground rod where GGB is to be placed. This provides good rotational resistance. **Perform a "pre-crimp" on ground rod prior to installing GGB connector. Use an indent type of die such as Burndy's U2CABT (Die Index #348) or UPRECRIMP-12, -58, -34.**
2. UPRECRIMP and U2CABT are registered trademarks of Burndy/FCI

# Compression Grounding

## Figure 6 - 8 Grounding Grid Tooling

### TYPE GGB

#### Features

- Manufactured from high strength copper alloy
- Clearly marked with wire size and die index
- Each size accepts a wide range of cable sizes
- Side 1 & Side 2 can be rotated to any position before crimping
- UL Listed and CSA Certified for grounding and bonding
- Prefilled with DE-OX® oxide inhibiting compound
- TN in catalog number designates tin plated

#### Benefits

- Provides maximum conductivity
- Provides easy identification and tooling recommendation
- Application flexibility and reduced inventory
- Ease of installation
- Direct burial in earth or concrete
- Prevents oxides from forming
- For use with galvanized steel ground rod

Catalog Number	INSTALLATION TOOLING					
	ILSCO		Burdy		Thomas & Betts (w/Burdy Dies)	
	ILC-12-N, ILC-12H-N, ILCB-12-N & ILC-15 Series† Die (No. of Crimps)		Y35, Y39, Y46, Y750, PAT750 & PAT46 Series Die (No. of Crimps)		TBM14, TBM15, BPLT14 & BPLT15 Series, 1300A Die (No. of Crimps)	
	Side 1	Side 2	Side 1	Side 2	Side 1	Side 2
GGB-1	997 (1)	998 (1)	997 (1)	998 (1)	997 (1)	998 (1)
GGB-2	997 (1)	998 (1)	997 (1)	998 (1)	997 (1)	998 (1)
GGB-3	997 (1)	998 (1)	997 (1)	998 (1)	997 (1)	998 (1)
GGB-4	997 (1)	998 (1)	997 (1)	998 (1)	997 (1)	998 (1)
GGB-5	998 (1)	998 (1)	998 (1)	998 (1)	998 (1)	998 (1)
GGB-6	998 (1)	998 (1)	998 (1)	998 (1)	998 (1)	998 (1)
GGB-7	998 (1)	998 (1)	998 (1)	998 (1)	998 (1)	998 (1)
GGB-8	998 (1)	998 (1)	998 (1)	998 (1)	998 (1)	998 (1)
GGB-3TN	997 (1)	998 (1)	997 (1)	998 (1)	997 (1)	998 (1)
GGB-6TN	998 (1)	998 (1)	998 (1)	998 (1)	998 (1)	998 (1)

997 and 998 are Burndy die indexes

† Adaptor required when using ILC-15 Series tools



# Compression Grounding

## Figure 6 - 8 Grounding Grid

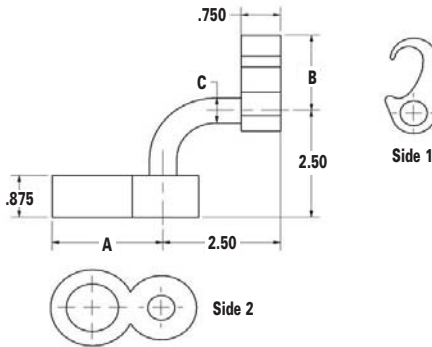
### TYPE GGB

#### Features

- Manufactured from high strength copper alloy
- Clearly marked with wire size and die index
- Each size accepts a wide range of cable sizes
- Side 1 & Side 2 can be rotated to any position before crimping
- UL Listed and CSA Certified for grounding and bonding
- Prefilled with DE-OX® oxide inhibiting compound
- TN in catalog number designates tin plated

#### Benefits

- Provides maximum conductivity
- Provides easy identification and tooling recommendation
- Application flexibility and reduced inventory
- Ease of installation
- Direct burial in earth or concrete
- Prevents oxides from forming
- For use with galvanized steel ground rod



Catalog Number	Commercial Copper Cable Range Side 1	Metric Copper Cable Range Side 1	Copper Weld Cable Range Side 1	Ground Rod Diameter Side 2	Rebar Side 2	Dimensions - in. (mm)		
						A	B	C
GGB-1	250kcmil (.575 dia.) thru 2str (.292 dia.)	120mm <sup>2</sup> (14.40mm dia.) thru 35mm <sup>2</sup> (7.62mm dia.)	248.8kcmil (.572 dia.) thru 91.65kcmil (.343 dia.)	1/2"	#3	1.390 (35.3)	1.660 (42.2)	0.312 (7.9)
GGB-2	250kcmil (.575 dia.) thru 2str (.292 dia.)	120mm <sup>2</sup> (14.40mm dia.) thru 35mm <sup>2</sup> (7.62mm dia.)	248.8kcmil (.572 dia.) thru 91.65kcmil (.343 dia.)	5/8"	#4	1.455 (37.0)	1.660 (42.2)	0.312 (7.9)
GGB-3	250kcmil (.575 dia.) thru 2str (.292 dia.)	120mm <sup>2</sup> (14.40mm dia.) thru 35mm <sup>2</sup> (7.62mm dia.)	248.8kcmil (.572 dia.) thru 91.65kcmil (.343 dia.)	3/4"	#5	1.644 (41.8)	1.660 (42.2)	0.500 (12.7)
GGB-4	250kcmil (.575 dia.) thru 2str (.292 dia.)	120mm <sup>2</sup> (14.40mm dia.) thru 35mm <sup>2</sup> (7.62mm dia.)	248.8kcmil (.572 dia.) thru 91.65kcmil (.343 dia.)	1"	#6-7	2.025 (51.4)	1.677 (42.6)	0.500 (12.7)
GGB-5	500kcmil (.813 dia.) thru 250kcmil (.575 dia.)	240mm <sup>2</sup> (20.35mm dia.) thru 120mm <sup>2</sup> (14.40mm dia.)	498.8kcmil (.810 dia.) thru 248.8kcmil (.572 dia.)	1/2"	#3	1.390 (35.3)	2.075 (52.7)	0.312 (7.9)
GGB-6	500kcmil (.813 dia.) thru 250kcmil (.575 dia.)	240mm <sup>2</sup> (20.35mm dia.) thru 120mm <sup>2</sup> (14.40mm dia.)	498.8kcmil (.810 dia.) thru 248.8kcmil (.572 dia.)	5/8"	#4	1.455 (37.0)	2.075 (52.7)	0.312 (7.9)
GGB-7	500kcmil (.813 dia.) thru 250kcmil (.575 dia.)	240mm <sup>2</sup> (20.35mm dia.) thru 120mm <sup>2</sup> (14.40mm dia.)	498.8kcmil (.810 dia.) thru 248.8kcmil (.572 dia.)	3/4"	#5	1.644 (41.8)	2.075 (52.7)	0.500 (12.7)
GGB-8	500kcmil (.813 dia.) thru 250kcmil (.575 dia.)	240mm <sup>2</sup> (20.35mm dia.) thru 120mm <sup>2</sup> (14.40mm dia.)	498.8kcmil (.810 dia.) thru 248.8kcmil (.572 dia.)	1"	#6-7	2.025 (51.4)	2.075 (52.7)	0.500 (12.7)
GGB-3TN	250kcmil (.575 dia.) thru 2str (.292 dia.)	120mm <sup>2</sup> (14.40mm dia.) thru 35mm <sup>2</sup> (7.62mm dia.)	248.8kcmil (.572 dia.) thru 91.65kcmil (.343 dia.)	3/4"	N/A	1.644 (41.8)	1.660 (42.2)	0.500 (12.7)
GGB-6TN	500kcmil (.813 dia.) thru 250kcmil (.575 dia.)	240mm <sup>2</sup> (20.35mm dia.) thru 120mm <sup>2</sup> (14.40mm dia.)	498.8kcmil (.810 dia.) thru 248.8kcmil (.572 dia.)	5/8"	N/A	1.455 (37.0)	2.075 (52.7)	0.312 (7.9)

All wire sizes, unless noted otherwise, are American Wire Gauge (AWG)  
Tested to UL467, UL File E34440

#### Notes:

1. When used with ground rods, it is recommended to rough up the end of ground rod where GGB is to be placed. This provides good rotational resistance. **Perform a "pre-crimp" on ground rod prior to installing GGB connector. Use an indent type of die such as Burndy's U2CABT (Die Index #348) or UPRECRIMP-12, -58, -34.**
2. UPRECRIMP and U2CABT are registered trademarks of Burndy/FCI

# Compression Grounding

## Figure 6 - 8 Grounding Grid Tooling

### TYPE GGB

#### Features

- Manufactured from high strength copper alloy
- Clearly marked with wire size and die index
- Each size accepts a wide range of cable sizes
- Side 1 & Side 2 can be rotated to any position before crimping
- UL Listed and CSA Certified for grounding and bonding
- Prefilled with DE-OX® oxide inhibiting compound
- TN in catalog number designates tin plated

#### Benefits

- Provides maximum conductivity
- Provides easy identification and tooling recommendation
- Application flexibility and reduced inventory
- Ease of installation
- Direct burial in earth or concrete
- Prevents oxides from forming
- For use with galvanized steel ground rod

Catalog Number	INSTALLATION TOOLING					
	ILSCO		Burdny		Thomas & Betts (w/Burdny Dies)	
	ILC-12-N, ILC-12H-N, ILCB-12-N & ILC-15 Series† Die (No. of Crimps)		Y35, Y39, Y46, Y750, PAT750 & PAT46 Series Die (No. of Crimps)		TBM14, TBM15, BPLT14 & BPLT15 Series, 1300A Die (No. of Crimps)	
	Side 1	Side 2	Side 1	Side 2	Side 1	Side 2
GGB-1	997 (1)	998 (1)	997 (1)	998 (1)	997 (1)	998 (1)
GGB-2	997 (1)	998 (1)	997 (1)	998 (1)	997 (1)	998 (1)
GGB-3	997 (1)	998 (1)	997 (1)	998 (1)	997 (1)	998 (1)
GGB-4	997 (1)	998 (1)	997 (1)	998 (1)	997 (1)	998 (1)
GGB-5	998 (1)	998 (1)	998 (1)	998 (1)	998 (1)	998 (1)
GGB-6	998 (1)	998 (1)	998 (1)	998 (1)	998 (1)	998 (1)
GGB-7	998 (1)	998 (1)	998 (1)	998 (1)	998 (1)	998 (1)
GGB-8	998 (1)	998 (1)	998 (1)	998 (1)	998 (1)	998 (1)
GGB-3TN	997 (1)	998 (1)	997 (1)	998 (1)	997 (1)	998 (1)
GGB-6TN	998 (1)	998 (1)	998 (1)	998 (1)	998 (1)	998 (1)

997 and 998 are Burdny die indexes

† Adaptor required when using ILC-15 Series tools