

Airo

Luminaire / Pole Combination
10-DAY QUICK SHIPMENT PROGRAM



PRONTO COMBO

AIRO 10 DAY QUICK SHIPMENT PROGRAM

One of our most popular area lights paired with our most popular poles!

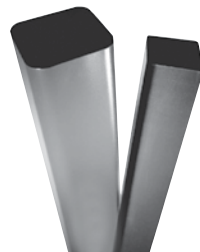
Airo Series Luminaire

- Three Sizes Up to 18,000 Lumens
- Single & Double 180 deg. Configurations 4000K & 5000K CCT (70 CRI)
- Type III & IV Distributions
- Optional 7-pin ANSI Twist-Lock PC Receptacle for Daylight and Wireless Control
- Dark Bronze Powder Paint (textured)



SSS Series Poles

- Square Straight Steel Construction
- 4" Square x 0.125" Wall Thickness
- 16', 20', & 25' Lengths
- Pole Base Accommodates 8"-10" bolt circles using four (4) 3/4" diameter anchor bolts
- Dark Bronze Powder Paint (textured)
- With or Without Anchor Bolts
- Select Configurations Include Vibration Damper



10-Day Quick Shipments

- All Product Manufactured and Ship From Christiansburg, VA Within 10 Days
- Consolidated Shipment – Everything Arrives On One Truck!
- All Configurations Available Less Anchor Bolts
- Stocked Anchor Bolts & Templates Available for Advanced Foundation Construction

Airo Series Luminaire AVAILABLE CONFIGURATIONS

AIRO

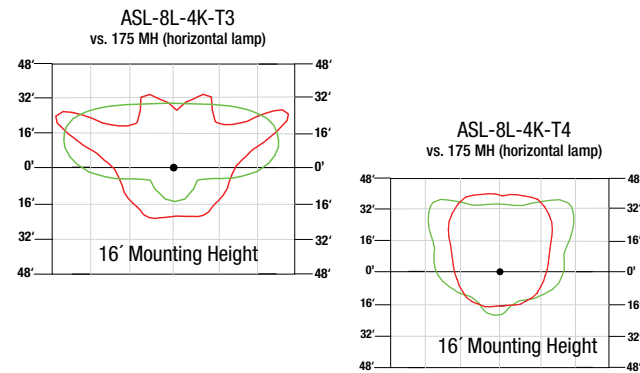
AIRO

HID Equivalent = 150W - 250W Lamp



8

16 -20 ft.
TYPICAL
MOUNTING
HEIGHT



Performance Data

Series Number	HID Equivalency		Lumens Delivered		Number of LEDs	System Watts	Lumens Per Watt Type 4	CCT	Drivers / Current
	MH	HPS	Type 3	Type 4					
ASL-8L	175w - 250w	175w - 250w	6139	6285	8	62	101	5000K	1@2100mA
			5624	5757	8	62	93	4000K	1@2100mA

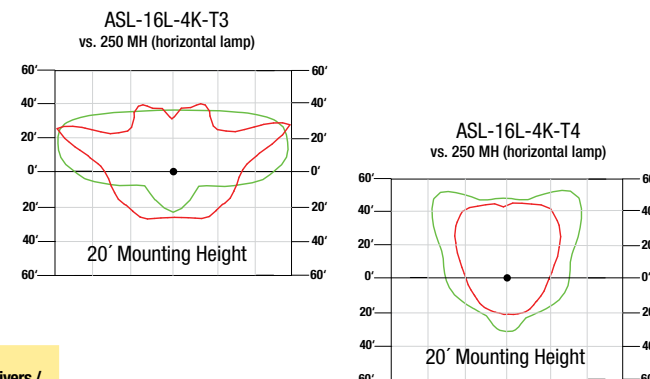
175W HID 0.5 Foot-candles
62W LED 0.5 Foot-candles
16 FT. GRID SPACING

HID Equivalent = 250W - 400W Lamp



16

20 -25 ft.
TYPICAL
MOUNTING
HEIGHT



Performance Data

Series Number	HID Equivalency		Lumens Delivered		Number of LEDs	System Watts	Lumens Per Watt Type 4	CCT	Drivers / Current
	MH	HPS	Type 3	Type 4					
ASL-16L	250w - 400w	250w - 400w	12175	12463	16	123	101	5000K	1@2100mA
			11153	11417	16	123	93	4000K	1@2100mA

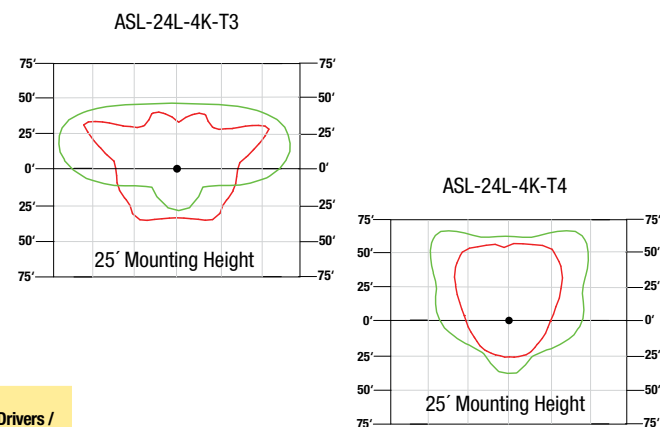
250W HID 0.5 Foot-candles
123W LED 0.5 Foot-candles
20 FT. GRID SPACING

HID Equivalent = 400W+ Lamp



24

25 ft.
TYPICAL
MOUNTING
HEIGHT

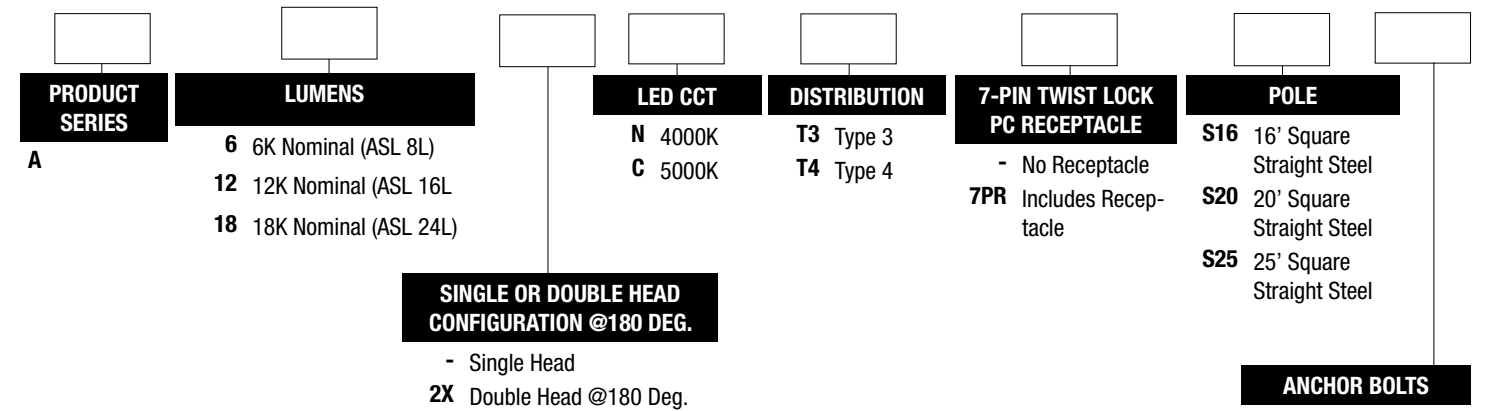


Performance Data

Series Number	HID Equivalency		Lumens Delivered		Number of LEDs	System Watts	Lumens Per Watt Type 4	CCT	Drivers / Current
	MH	HPS	Type 3	Type 4					
ASL-24L	400w+	400w+	17863	18287	24	181	101	5000K	1@2100mA
			16364	16752	24	181	93	4000K	1@2100mA

400W HID 0.5 Foot-candles
181W LED 0.5 Foot-candles
25 FT. GRID SPACING

ORDERING LOGIC*



*25 piece max order size for 10-day shipment.



ACCESSORIES - Order Separately

Catalog Number	Description
TAB30M38	3/4" x 30" x 3" anchor bolt set (four individual bolts)
93062959	SSS-H Series pole anchor bolt template
PTL-1	Photocontrol-twist-lock cell (120V) - requires 7PR option
PTL-8	Photocontrol-twist-lock cell (120V-277V) - requires 7PR option
PSC	Shorting-cap-twist-lock - requires 7PR option

Standard ASCE7-05 Wind Map																						
Pole Height (4" Sq x 0.125" wall thickness)	85 MPH Zone			90 MPH Zone			100 MPH Zone			105 MPH Zone (HI)			110 MPH Zone			120 MPH Zone			145 MPH Zone (PR)			
	16'	20'	25'	16'	20'	25'	16'	20'	25'	16'	20'	25'	16'	20'	25'	16'	20'	25'	16'	20'	25'	
Allowable EPAs (ft/sq)	19	12.7	7.3	16.7	10.9	5.9	13	7.9	3.8	11.5	6.9	2.9	7.9	4.2	0.8	7.9	4.2	0.8	4.1	1.3	NR	
ASL Series - Single																						NR
ASL Series - DBL @ 180 deg.																					NO ASL 24	NR

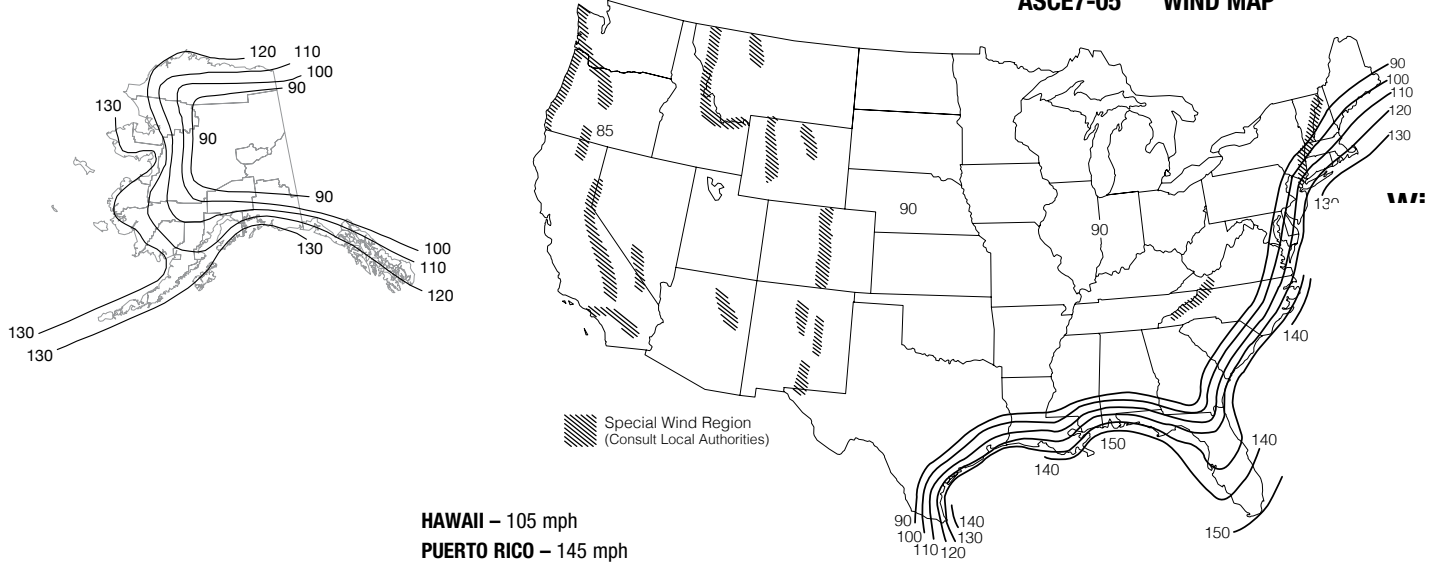
Florida Region Wind Map (2010 Building Code)																								
Pole Height (4" Sq x 0.125" wall thickness)	115 MPH Zone			120 MPH Zone			130 MPH Zone			140 MPH Zone			150 MPH Zone			160 MPH Zone			170 MPH Zone			180 MPH Zone		
	16'	20'	25'	16'	20'	25'	16'	20'	25'	16'	20'	25'	16'	20'	25'	16'	20'	25'	16'	20'	25'	16'	20'	25'
Allowable EPAs (ft/sq)	20.8	13.6	7.4	18.7	11.9	6.2	15.2	9.2	4.1	12.3	7.1	2.5	10.1	5.3	1.1	8.2	3.9	NR	6.7	2.7	NR	5.4	1.7	NR
ASL Series - Single																		NR			NR			NR
ASL Series - DBL @ 180 deg.																		NR			NR			NR

Acceptable	Includes Vibration Damper ¹	ASL-24 Exceeds Allowable Pole EPA	Not Recommended
------------	----------------------------------------	-----------------------------------	-----------------

Florida Building Code utilizes a different calculation method than ASCE, which results in different allowable EPAs. Consult your local authorities to determine which standard to use for your project

Notes: ¹ Pole used in program includes a vibration damper (VM2 style) due to low luminaire EPA and 25' mounting height. *Consult the complete list of pole notes on the pole specification sheets located on the Hubbell Lighting web site.

ASCE7-05 WIND MAP



FLORIDA REGION WIND MAP (2010 FLORIDA BUILDING CODE)

- Florida region wind map above is based upon 3-second gust winds and the 2010 Florida Building Code

