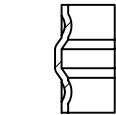
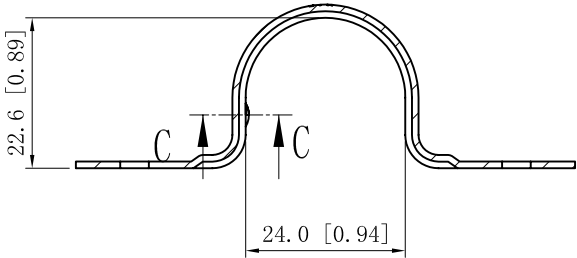


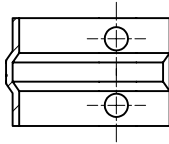
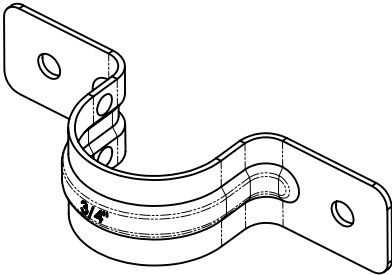
SIDES	BOTTOM
Material:Steel-0.039"-C.R.S Zinc Plated	



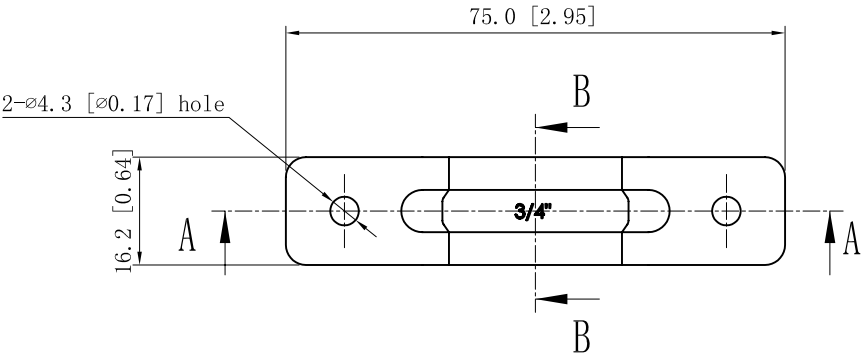
CUTAWAY VIEW C-C



CUTAWAY VIEW A-A



CUTAWAY VIEW B-B



DESCRIPTION
TRADE REFERENCE TERMS

This data sheet is for reference only .GARVIN INDUSTRIES reserves the right to make changes to the design without prior notice.

STANDARD PACKING	GARVIN INDUSTRIES			
	TWO-HOLE STRAPS			
	50 PCS	SIZE A4	DWG NO. THS-75	REV A
DATA SHEET				