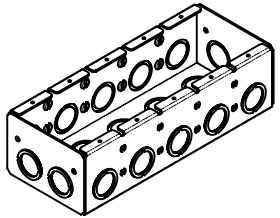
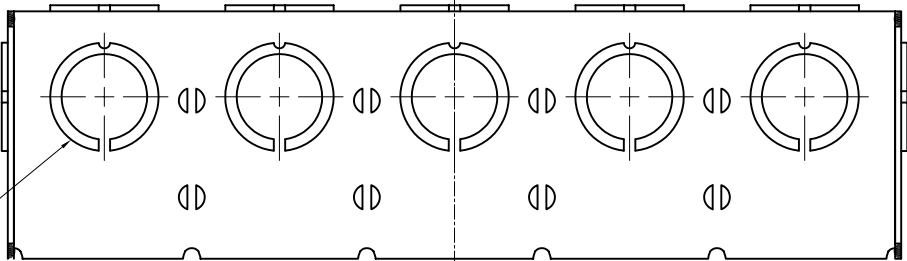
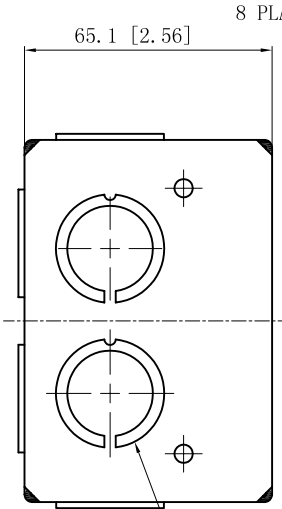


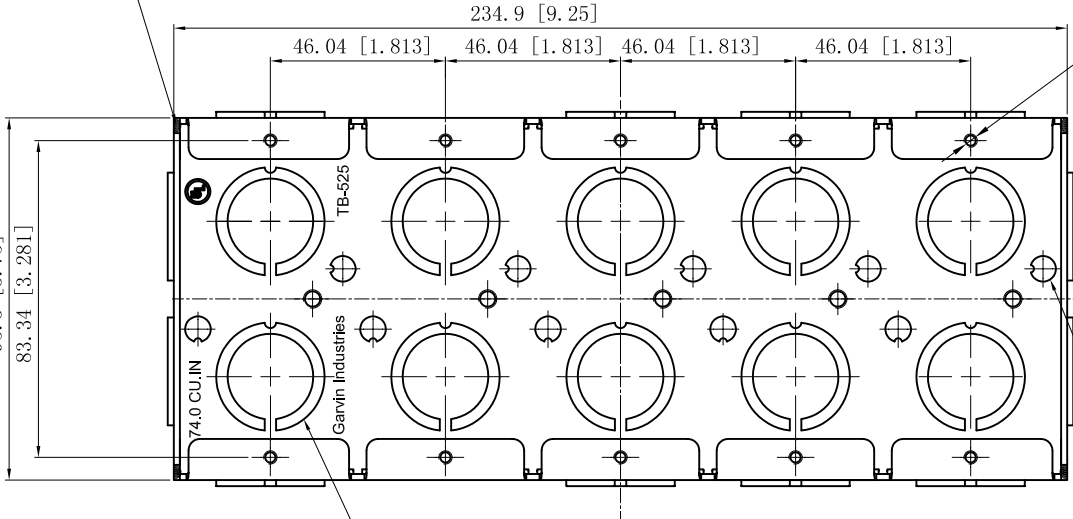
SIDES	BOTTOM
14 1/2"-3/4" MOON KNOCKOUTS	10 KNOCKOUTS
	10 1/2"-3/4" MOON KNOCKOUTS
Material: Steel-0.0625"-G60 Galvanized	



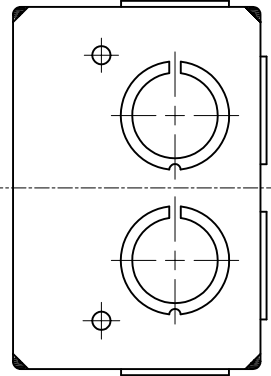
10 1/2"-3/4" MOON KNOCKOUTS $\phi=22.50$ [$\phi=0.886$]
 $\phi=28.50$ [$\phi=1.122$] MIRROR



8 PLACES SPOT WELDING



10-#6-32 UNC HOLE



4 1/2"-3/4" MOON KNOCKOUTS $\phi=22.50$ [$\phi=0.886$]
 $\phi=28.50$ [$\phi=1.122$] MIRROR

10 1/2"-3/4" MOON KNOCKOUTS $\phi=22.50$ [$\phi=0.886$]
 $\phi=28.50$ [$\phi=1.122$]

10 KNOCKOUTS $\phi=6.75$ [$\phi=0.266$]

This data sheet is for reference only .GARVIN INDUSTRIES reserves the right to make changes to the design without prior notice.

DESCRIPTION
TRADE REFERENCE TERMS

STANDARD PACKING
5 PCS

GARVIN INDUSTRIES		
TITLE SOLID MASONRY BOX 2-1/2" DEEP		
SIZE A4	DWG NO. TB-525	REV A
DATA SHEET		