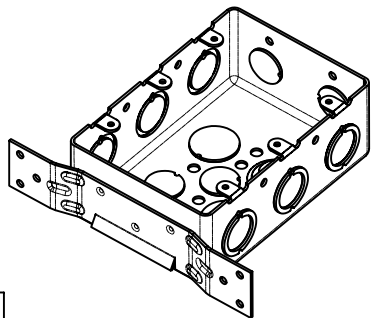
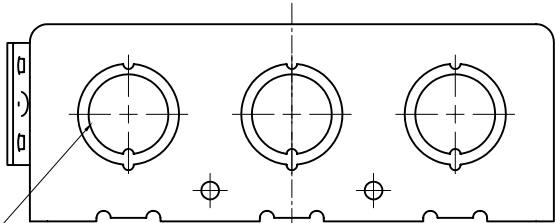
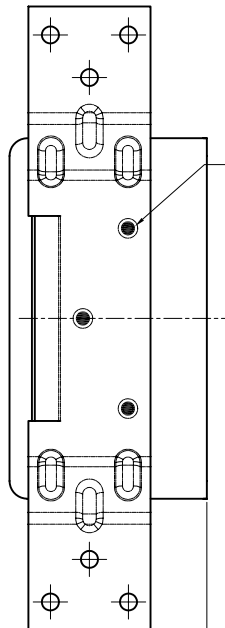


SIDES	BOTTOM
2 1/2" KNOCKOUTS	4 1/2" KNOCKOUTS
6 1/2"-3/4" MOON KNOCKOUTS	2 3/4" KNOCKOUTS
	1 Groud Hump
Material:Steel-0.0625"-G60 Galvanized	



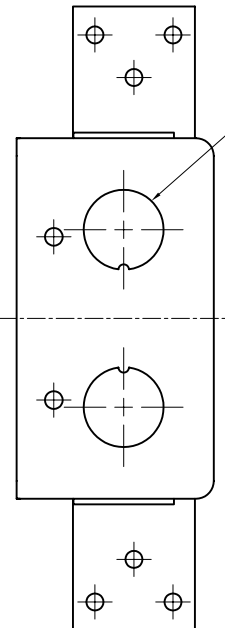
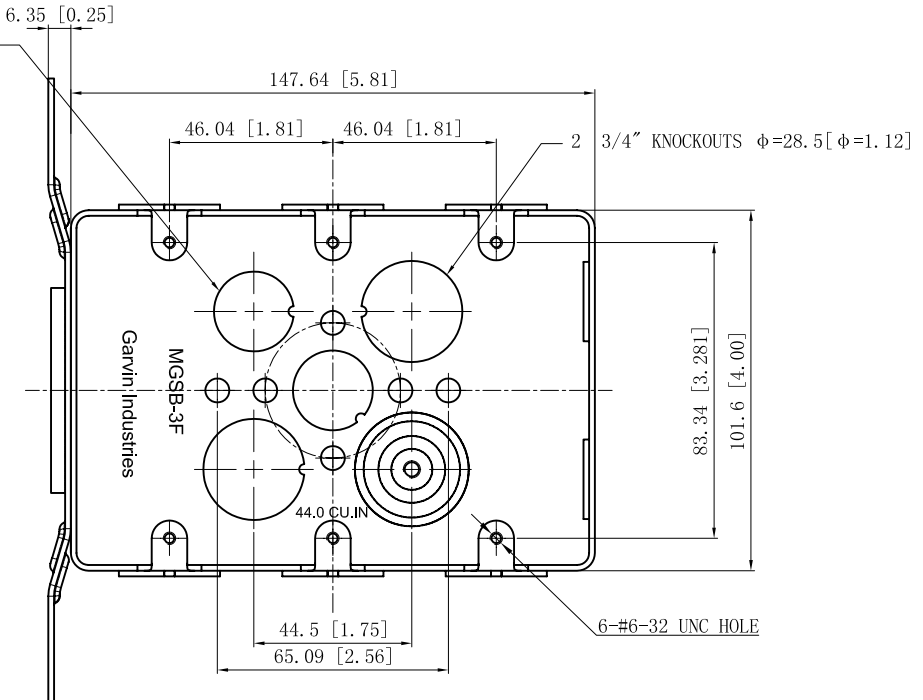
6 1/2"-3/4" MOON KNOCKOUTS  $\phi=22.5[\phi=0.89]$   
 $\phi=28.5[\phi=1.12]$

2 1/2" KNOCKOUTS  $\phi=22.5[\phi=0.89]$



3 PLACES SPOT WELDING

+1.27  
15.87 0.00 [ +0.050  
0.625 0.000 ]



2 1/2" KNOCKOUTS  $\phi=22.5[\phi=0.89]$

This data sheet is for reference only .GARVIN INDUSTRIES reserves the right to make changes to the design without prior notice.

DESCRIPTION
TRADE REFERENCE TERMS

STANDARD PACKING
20 PCS

<b>GARVIN INDUSTRIES</b>			
TITLE <b>3-GANG SWITCH BOX 2-1/8" DEEP</b>			
SIZE A4	DWG NO.	MGSB-3F	REV E
DATA SHEET			