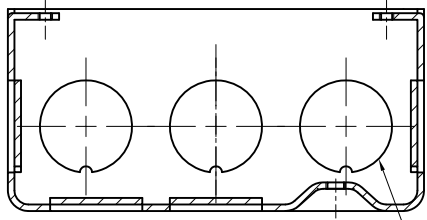
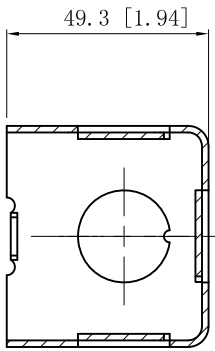
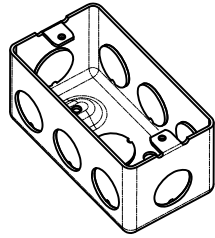


SIDES	BOTTOM
8 1/2" KNOCKOUTS	2 1/2" KNOCKOUTS
	1 Ground Hump
Material: Steel-0.0625"-G60 Galvanized	

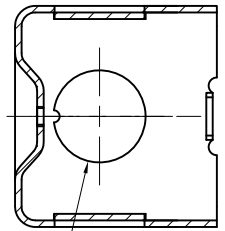
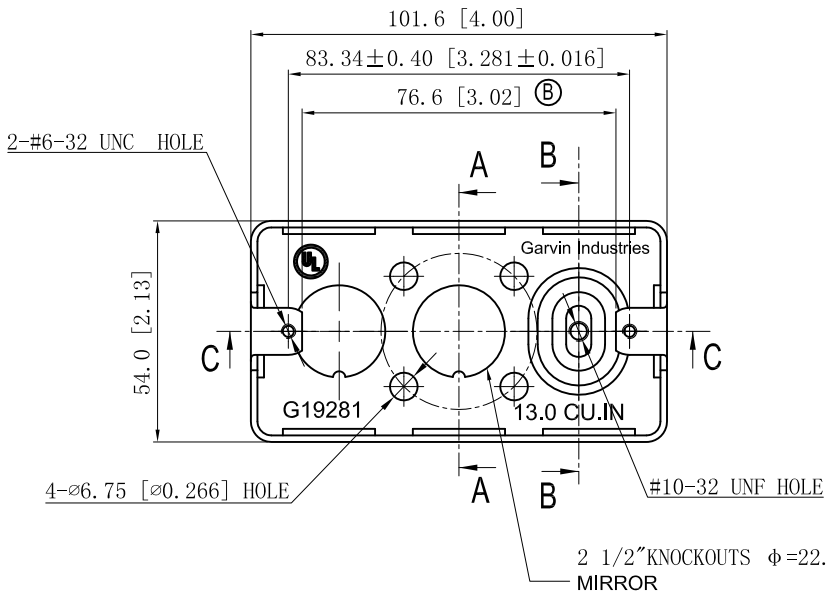


CUTAWAY VIEW C-C

6 1/2" KNOCKOUTS $\phi = 22.50 [\phi = 0.886]$
MIRROR



CUTAWAY VIEW A-A



CUTAWAY VIEW B-B

2 1/2" KNOCKOUTS $\phi = 22.50 [\phi = 0.886]$
MIRROR

DESCRIPTION
TRADE REFERENCE TERMS

This data sheet is for reference only .GARVIN INDUSTRIES reserves the right to make changes to the design without prior notice.

STANDARD PACKING	<h1>GARVIN INDUSTRIES</h1>		
50 PCS			
TITLE	HANDY UTILITY BOXES & EXTENSION RINGS		
SIZE	DWG NO.		REV
A4	G19281		B
DATA SHEET			