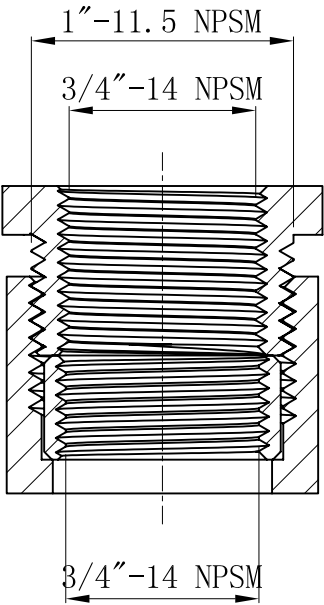
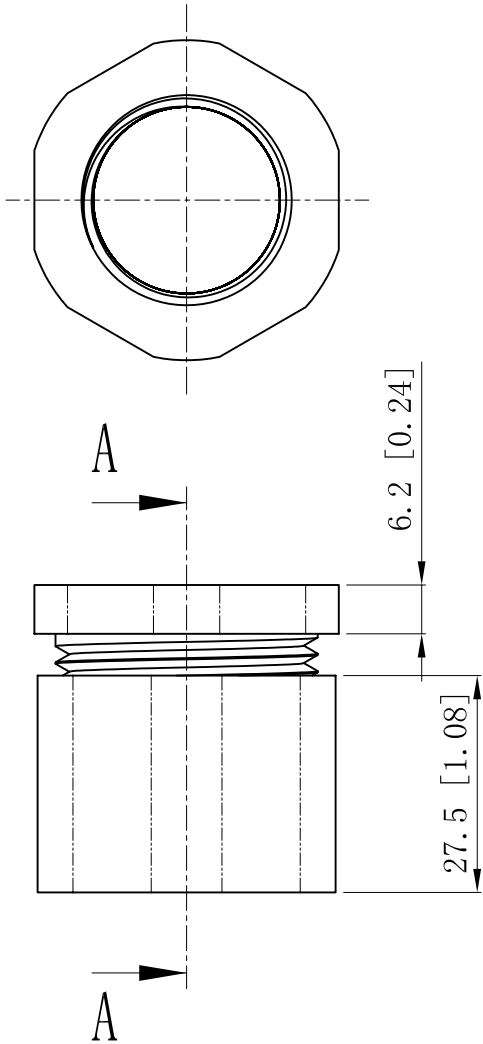
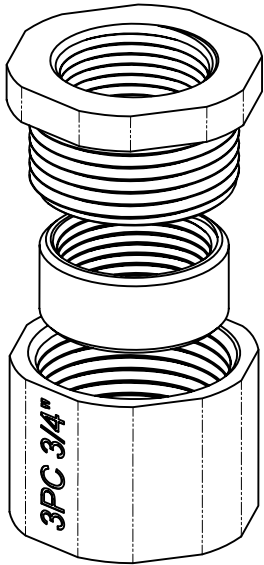


SIDES	BOTTOM
Material:malleable casting,Finish:Zinc plated	



CUTAWAY VIEW A-A

DESCRIPTION
TRADE REFERENCE TERMS

This data sheet is for reference only .GARVIN INDUSTRIES reserves the right to make changes to the design without prior notice.

STANDARD PACKING	<div>GARVIN INDUSTRIES</div>		
25 PCS	TITLE		
	THREE-PIECE COUPLING		
	SIZE	DWG NO.	REV
	A4	3PC75	
DATA SHEET			