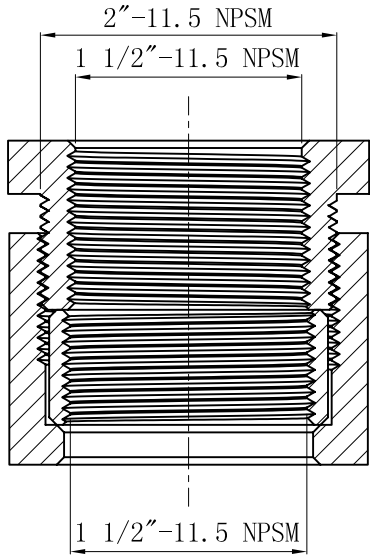
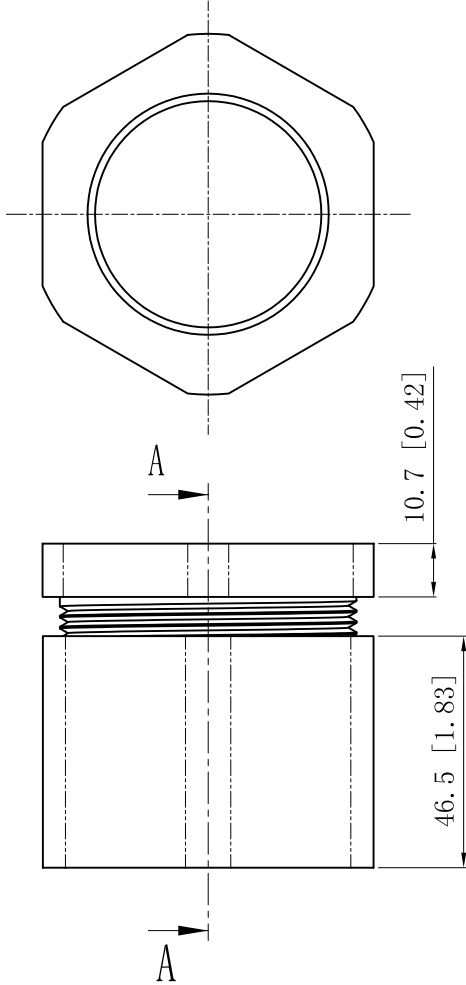
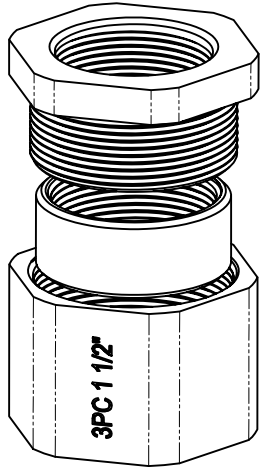


SIDES	BOTTOM
Material:malleable casting,Finish:Zinc plated	



CUTAWAY VIEW A-A

This data sheet is for reference only .GARVIN INDUSTRIES reserves the right to make changes to the design without prior notice.

DESCRIPTION
TRADE REFERENCE TERMS

STANDARD PACKING
10 PCS

<b>GARVIN INDUSTRIES</b>		
TITLE THREE-PIECE COUPLING		
SIZE A4	DWG NO. 3PC150	REV
DATA SHEET		