

COOPER LIGHTING - METALUX®

DESCRIPTION

The floating appearance of the Softside Cloud complements any décor with a non-glaring illumination. The low profile of the frameless diffuser allows the fixture to blend in with its surroundings. The Softside Cloud is an ideal choice for a variety of commercial applications.

| | | |
|-------------|--|------|
| Catalog # | | Type |
| Project | | |
| Comments | | Date |
| Prepared by | | |

SPECIFICATION FEATURES

A... Construction

Housing is manufactured with die formed cold rolled steel. Ends are formed for added strength. Ballast cover is removable without tools.

B... Electrical*

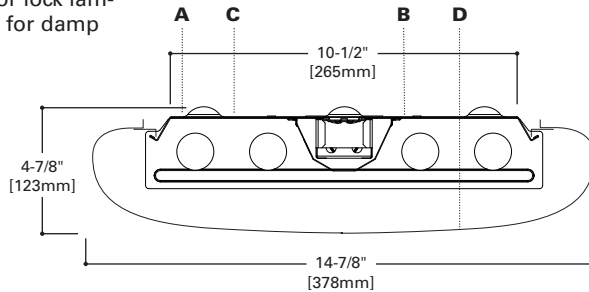
Universal Instant Start Commercial Grade Ballast. CBM/ETL Class "P" Listed. UL/cUL listed. Rotor lock lampholders. Suitable for damp locations.

C... Finish

Multistage pre-paint ensures maximum bonding and rust prevention.

D... Shielding

Utilizes a trademark Tuff'R'Puff commercial grade acrylic lens that is formulated to protect against lens breakage and 'yellowing' discoloration. Snap fit for ease of service and relamping.



WSC SERIES

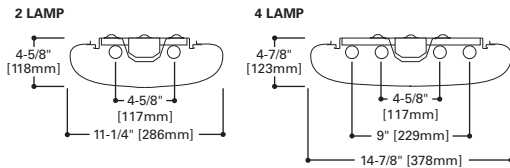
232

432

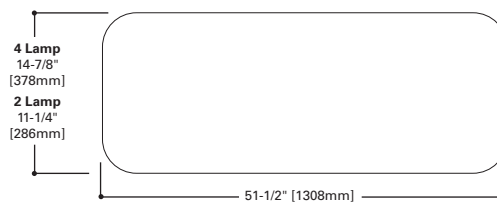
1' x 4', 1-1/2' x 4'
2 or 4 T8 Lamps

Modular Fluorescent
Softside Cloud

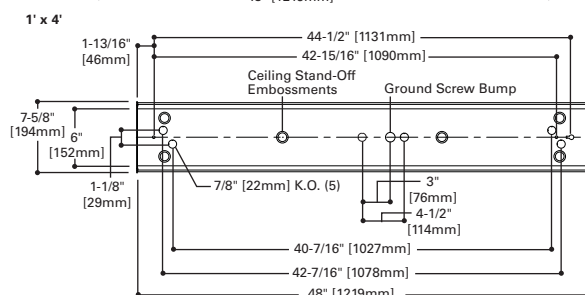
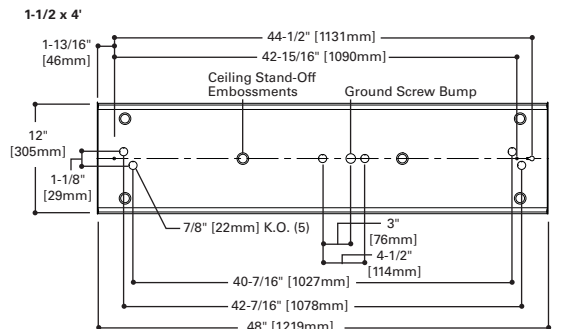
LAMP CONFIGURATIONS



LENS



MOUNTING DATA



ENERGY DATA

Input Watts:

EB Ballast & STD Lamps

232 (54)

432 (110)

Luminaire Efficacy Rating

LER = FL64

Catalog Number: WSC-232

Yearly Cost of 1000 lumens,
3000 hrs at .08 KWH = \$3.28

**Reference the lamp/ballast data in the Technical Section for specific lamp/ballast requirements.

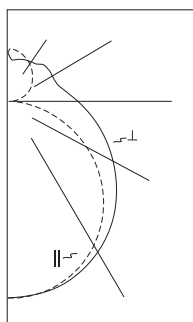
LAMPS CONTAIN MERCURY. DISPOSE ACCORDING TO LOCAL, STATE OR FEDERAL LAWS

LINEAR DISCONNECT

Safe and convenient means of disconnecting power.



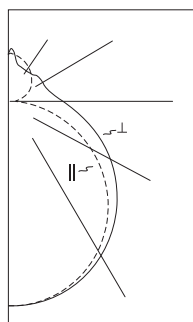
PHOTOMETRICS



WSC-232
 Electronic Ballast
 (2) F32T8 Lamps
 2800 Lumens each
 Spacing criterion:
 (II) 1.3 x mounting
 height, (L) 1.3 x
 mounting height
 Efficiency 70.5%
 Test Report:
 P20017
 LER = FL64
 Yearly Cost of 1000
 lumens, 3000 hrs at
 .08 KWH = \$3.28

Candlepower

| Angle | Along II | 45° | Across ⊥ |
|-------|----------|-----|----------|
| 0 | 812 | 812 | 812 |
| 5 | 811 | 811 | 809 |
| 10 | 802 | 804 | 804 |
| 15 | 787 | 791 | 794 |
| 20 | 764 | 772 | 778 |
| 25 | 735 | 747 | 756 |
| 30 | 700 | 717 | 730 |
| 35 | 658 | 682 | 700 |
| 40 | 611 | 642 | 665 |
| 45 | 559 | 598 | 628 |
| 50 | 501 | 551 | 587 |
| 55 | 440 | 501 | 545 |
| 60 | 375 | 449 | 504 |
| 65 | 308 | 399 | 464 |
| 70 | 240 | 350 | 425 |
| 75 | 174 | 306 | 387 |
| 80 | 111 | 265 | 352 |
| 85 | 58 | 229 | 320 |
| 90 | 22 | 199 | 290 |



WSC-432
 Electronic Ballast
 (2) F32T8 Lamps
 2800 Lumens each
 Spacing criterion:
 (II) 1.3 x mounting
 height, (L) 1.3 x
 mounting height
 Efficiency 61.6%
 Test Report:
 P20021
 LER = FL55
 Yearly Cost of 1000
 lumens, 3000 hrs at
 .08 KWH = \$3.83

Candlepower

| Angle | Along II | 45° | Across ⊥ |
|-------|----------|------|----------|
| 0 | 1544 | 1544 | 1544 |
| 5 | 1542 | 1541 | 1543 |
| 10 | 1525 | 1528 | 1531 |
| 15 | 1496 | 1502 | 1510 |
| 20 | 1453 | 1465 | 1475 |
| 25 | 1399 | 1415 | 1429 |
| 30 | 1333 | 1355 | 1373 |
| 35 | 1254 | 1286 | 1309 |
| 40 | 1166 | 1207 | 1237 |
| 45 | 1069 | 1121 | 1159 |
| 50 | 962 | 1028 | 1075 |
| 55 | 848 | 929 | 988 |
| 60 | 728 | 828 | 898 |
| 65 | 604 | 725 | 807 |
| 70 | 479 | 624 | 715 |
| 75 | 355 | 526 | 626 |
| 80 | 238 | 435 | 544 |
| 85 | 134 | 358 | 473 |
| 90 | 61 | 299 | 416 |

Coefficients of Utilization

| rc | Effective floor cavity reflectance | | | | | | | | | | | | | | | | | | |
|-----|------------------------------------|----|----|----|-----|----|----|----|-----|----|----|----|-----|----|----|----|----|----|----|
| | 80% | | | | 70% | | | | 50% | | | | 20% | | | | | | |
| rw | 70 | 50 | 30 | 10 | 70 | 50 | 30 | 10 | 50 | 30 | 10 | 0 | 50 | 30 | 10 | 0 | | | |
| RCR | 0 | 79 | 79 | 79 | 79 | 75 | 75 | 75 | 75 | 68 | 68 | 68 | 61 | 61 | 61 | 55 | 55 | 55 | 52 |
| 1 | 71 | 67 | 63 | 60 | 67 | 63 | 60 | 58 | 57 | 55 | 52 | 51 | 49 | 47 | 46 | 44 | 43 | 40 | 40 |
| 2 | 64 | 58 | 52 | 48 | 60 | 55 | 50 | 46 | 49 | 45 | 42 | 44 | 41 | 38 | 39 | 37 | 35 | 32 | 32 |
| 3 | 58 | 50 | 44 | 39 | 55 | 48 | 42 | 38 | 43 | 38 | 35 | 38 | 35 | 32 | 34 | 31 | 29 | 27 | 27 |
| 4 | 53 | 44 | 38 | 33 | 50 | 42 | 36 | 32 | 38 | 33 | 29 | 34 | 30 | 27 | 30 | 27 | 24 | 22 | 22 |
| 5 | 48 | 39 | 33 | 28 | 46 | 37 | 31 | 27 | 34 | 29 | 25 | 30 | 26 | 23 | 27 | 24 | 21 | 19 | 19 |
| 6 | 44 | 35 | 29 | 24 | 42 | 33 | 27 | 23 | 30 | 25 | 22 | 27 | 23 | 20 | 25 | 21 | 18 | 16 | 16 |
| 7 | 41 | 32 | 25 | 21 | 39 | 30 | 24 | 20 | 27 | 22 | 19 | 25 | 21 | 18 | 22 | 19 | 16 | 14 | 14 |
| 8 | 38 | 29 | 23 | 19 | 36 | 27 | 22 | 18 | 25 | 20 | 17 | 23 | 19 | 16 | 20 | 17 | 14 | 13 | 13 |
| 9 | 36 | 26 | 20 | 17 | 34 | 25 | 20 | 16 | 23 | 18 | 15 | 21 | 17 | 14 | 19 | 15 | 13 | 11 | 11 |
| 10 | 33 | 24 | 19 | 15 | 31 | 23 | 18 | 14 | 21 | 17 | 13 | 19 | 15 | 13 | 17 | 14 | 12 | 10 | 10 |

Coefficients of Utilization

| rc | Effective floor cavity reflectance | | | | | | | | | | | | | | | | | | |
|-----|------------------------------------|----|----|----|-----|----|----|----|-----|----|----|----|-----|----|----|----|----|----|----|
| | 80% | | | | 70% | | | | 50% | | | | 20% | | | | | | |
| rw | 70 | 50 | 30 | 10 | 70 | 50 | 30 | 10 | 50 | 30 | 10 | 0 | 50 | 30 | 10 | 0 | | | |
| RCR | 0 | 70 | 70 | 70 | 70 | 67 | 67 | 67 | 61 | 61 | 61 | 55 | 55 | 55 | 50 | 50 | 50 | 48 | 48 |
| 1 | 63 | 59 | 56 | 54 | 59 | 56 | 54 | 51 | 51 | 49 | 47 | 46 | 45 | 43 | 42 | 41 | 40 | 37 | 37 |
| 2 | 57 | 51 | 46 | 43 | 54 | 49 | 45 | 41 | 44 | 41 | 38 | 40 | 37 | 35 | 36 | 34 | 32 | 30 | 30 |
| 3 | 51 | 44 | 39 | 35 | 48 | 42 | 38 | 34 | 39 | 35 | 31 | 35 | 32 | 29 | 32 | 29 | 27 | 25 | 25 |
| 4 | 47 | 39 | 34 | 29 | 44 | 37 | 32 | 28 | 34 | 30 | 26 | 31 | 27 | 25 | 28 | 25 | 23 | 21 | 21 |
| 5 | 43 | 35 | 29 | 25 | 41 | 33 | 28 | 24 | 30 | 26 | 23 | 28 | 24 | 21 | 25 | 22 | 20 | 18 | 18 |
| 6 | 39 | 31 | 26 | 22 | 37 | 30 | 25 | 21 | 27 | 23 | 20 | 25 | 21 | 18 | 23 | 20 | 17 | 16 | 16 |
| 7 | 36 | 28 | 23 | 19 | 35 | 27 | 22 | 18 | 25 | 20 | 17 | 23 | 19 | 16 | 21 | 18 | 15 | 14 | 14 |
| 8 | 34 | 26 | 20 | 17 | 32 | 25 | 20 | 16 | 23 | 18 | 15 | 21 | 17 | 14 | 19 | 16 | 13 | 12 | 12 |
| 9 | 32 | 23 | 18 | 15 | 30 | 22 | 18 | 14 | 21 | 17 | 14 | 19 | 15 | 13 | 17 | 14 | 12 | 11 | 11 |
| 10 | 30 | 21 | 17 | 13 | 28 | 21 | 16 | 13 | 19 | 15 | 12 | 18 | 14 | 12 | 16 | 13 | 11 | 10 | 10 |

Zonal Lumen Summary

| Zone | Lumens | %Lamp | %Fixture |
|-------|--------|-------|----------|
| 0-30 | 645 | 11.5 | 16.3 |
| 0-40 | 1071 | 19.1 | 27.1 |
| 0-60 | 1976 | 35.3 | 50.1 |
| 0-90 | 2908 | 51.9 | 73.7 |
| 0-180 | 3947 | 70.5 | 100.0 |

Luminaire Data

| Angle in Deg | Average 0-Deg cd/sm | Average 45-Deg cd/sm | Average 90-Deg cd/sm |
|--------------|---------------------|----------------------|----------------------|
| 45 | 1885 | 1769 | 1654 |
| 55 | 1769 | 1687 | 1579 |
| 65 | 1593 | 1617 | 1547 |
| 75 | 1317 | 1619 | 1575 |
| 85 | 867 | 1825 | 1738 |

Zonal Lumen Summary

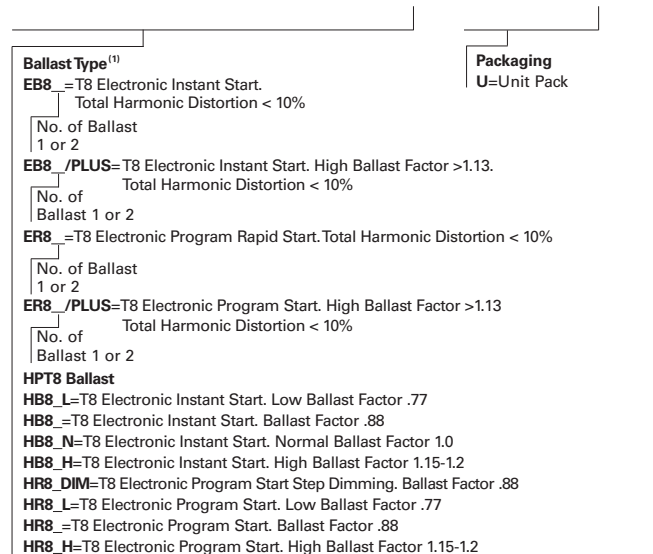
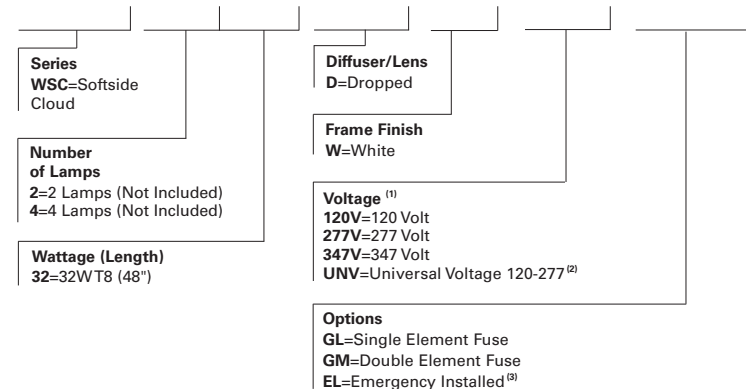
| Zone | Lumens | %Lamp | %Fixture |
|-------|--------|-------|----------|
| 0-30 | 1225 | 10.9 | 17.7 |
| 0-40 | 2029 | 18.1 | 29.4 |
| 0-60 | 3719 | 33.2 | 53.9 |
| 0-90 | 5334 | 47.6 | 77.3 |
| 0-180 | 6902 | 61.6 | 100.0 |

Luminaire Data

| Angle in Deg | Average 0-Deg cd/sm | Average 45-Deg cd/sm | Average 90-Deg cd/sm |
|--------------|---------------------|----------------------|----------------------|
| 45 | 2789 | 2664 | 2529 |
| 55 | 2636 | 2545 | 2419 |
| 65 | 2414 | 2431 | 2331 |
| 75 | 2075 | 2366 | 2289 |
| 85 | 1543 | 2564 | 2458 |

ORDERING INFORMATION

SAMPLE NUMBER: WSC-232-D-W-UNV-EB81-U



NOTES: ⁽¹⁾ Products also available in non-US voltages and frequencies for international markets. 120V must be specified with a residential ballast. ⁽²⁾ Not available when specifying emergencies, voltage must be specific. ⁽³⁾ A low profile battery pack is required for installation with standard ballast cover (consult Cooper Lighting).

For complete product data, reference the Fluorescent Specification binder. Specifications & dimensions subject to change without notice. Consult your Cooper Lighting Representative for availability and ordering information.

SHIPPING INFORMATION

| Catalog No. | Wt. |
|-------------|---------|
| WSC-232 | 13 lbs. |
| WSC-432 | 17 lbs. |

