

Champ® Pro PFM Series 25L and 50L LED Floodlights

UL/cUL Listed
NEMA 4X
IP66

2L

The Champ® Pro PFM LED Family

PFM LED Series Floodlights are designed to provide full-spectrum, crisp, white light. Two versions of the Champ Pro PFM LED are available, providing ideal solutions for a wide range of applications.

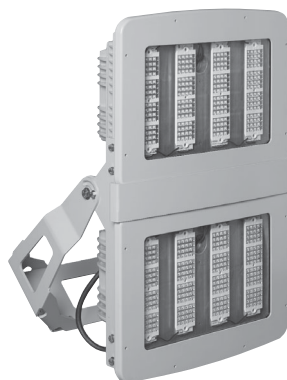
PFM Model	Equivalent HID Lamp	Energy Savings
PFM25L	750W MH	
PFM50L	1500W MH / 1000W HPS	Up to 65%!

Applications:

- High lumen output for installation in high mounting heights
- Locations requiring continuous and consistent light levels
- Areas requiring frequent on-and-off of lights
- Where extremely corrosive, wet, dusty, hot and/or cold conditions exist; indoors or outdoors
- NEMA 4X, marine, wet locations, and hose-down environments
- Indoor and outdoor area lighting in plants, buildings, and parking areas
- Manufacturing plants; heavy industrial, chemical, petrochemical or pharmaceutical facilities; platforms; loading docks; outdoor mounted general area lighting
- Ball mills, stackers and reclaimers, concentrators, smelters, mine roadways, outdoor processing areas, truck service shops, shovels, and drag lines

Certifications and Compliances:

- UL1598
- UL1598A
- cUL
- NEMA 4X; IP66
- DesignLights Consortium® approved for select models (refer to Ordering Information for details)
- UL approved up to 40°C ambient



PFM50L Model



PFM25L Model

Standard Materials:

- Housing – copper-free aluminum with Corro-free™ epoxy powder coat
- Lens – heat- and impact-resistant glass
- Yoke mount (standard) – copper-free aluminum with Corro-free™ epoxy powder coat
- Gaskets – silicone
- External hardware – stainless steel
- Factory-sealed, no external seals required

LED System:

- High brightness light emitting diodes (LEDs)
- Color temperature: 5000K (CRI 67)
- Advanced heat sink design ensures LED does not exceed manufacturer's temperature ratings across all specified ambient conditions
- LM-79, LM-80 reports available upon request

Electrical Ratings:

	PFM25L	PFM50L
Voltage Range, VAC	120-277V 50 / 60 Hz	
	277-480V 50 / 60 Hz	
Voltage Range, VDC	127-250V	
Input Power (Nom.)	263	531
Input Amps (Max.)	2.6	5.2
Power Factor	>0.90	

Options:

Description	Suffix
Two conduit/cable glands of like thread installed	S886
Diffused glass lens	S891
Polycarbonate lens.....	S903

Accessories:

Description	Cat. # (Sold Separately)
Bolt-on visor (sold separately).....	DSV1
Bolt-on wire guard (sold separately).....	P61
Floodlight slipfitter (sold separately).....	SFA6*
Slipfitter wall mount adapter (sold separately).....	SWB6*

*Available with PFM25L model only.

Drivers:

PFM Model	25L, 50L
/UNV1	90-305 VAC, 50 / 60 Hz; 127-250 VDC
/UNV34	277-480 VAC Model

Ordering Information:

25L Series†*

PFM25LCY/UNV1 76

NOTE: Available in cool color temperature only. For 277-480 VAC option, replace /UNV1 with /UNV34.

†DesignLights Consortium® approved model at 120-277V.

*PFM25L is DLC approved with a 5 year limited warranty. Refer to page 2 of the D-0413 authorized distributor price book for Eaton's Crouse-Hinds standard terms and conditions.

50L Series

PFM50LCY/UNV1 76

2L Champ® Pro PFM Series 25L and 50L LED Floodlights

UL/cUL Listed
NEMA 4X
IP66

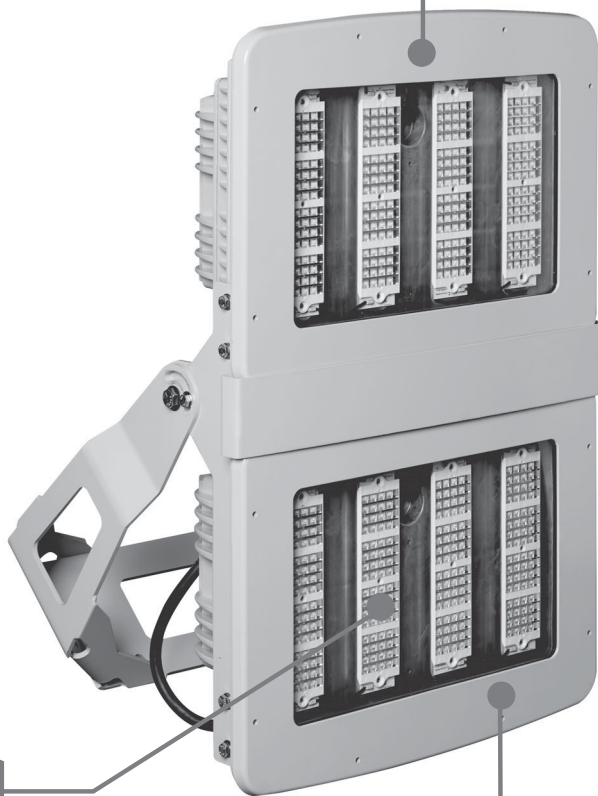
Safe, reliable heat transfer

The heat sink was designed to perform in high ambient temperatures up to +40°C and as low as -25°C. The thick walls of the castings make for a tough, rugged housing that keeps the internal driver and LED temperatures down, allowing them to perform flawlessly, and protects them from damage. Separated driver and LED housing allows dust to shed from fixture.



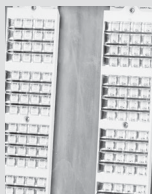
High efficiency and lumen output

High efficiency drivers and LEDs provide 100 LPW for reliable low cost operation in industrial environments. Components were chosen to give industry-leading light output from an LED flood. Replaceable drivers and LEDs for ease of maintenance and “no lights out” feature.



Versatile design

Can be used for outdoor or indoor applications, and for a wide range of mounting heights depending on model and light level requirement. Optics were specifically designed to give the familiar and industry-accepted NEMA 7x6 beam light pattern.



Optional equipment (sold separately)

Optional visor offered to control light spill.
Optional wire guard offered to protect lens from damage.
Other options available - consult part numbering guide.

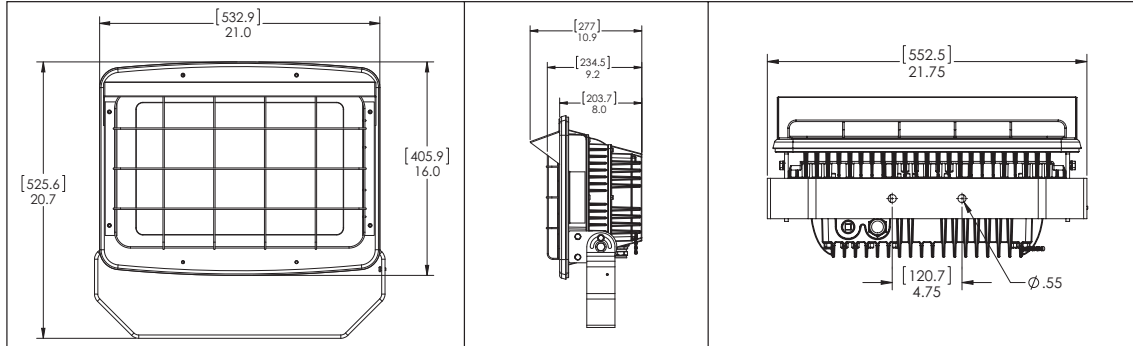
2L

Champ® Pro PFM Series 25L and 50L LED Floodlights

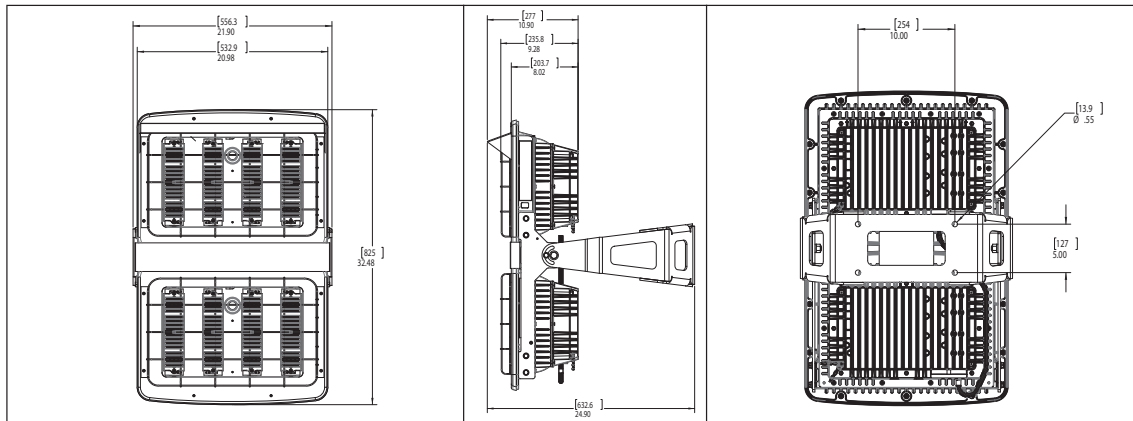
UL/cUL Listed
NEMA 4X
IP66

2L

Dimensions:

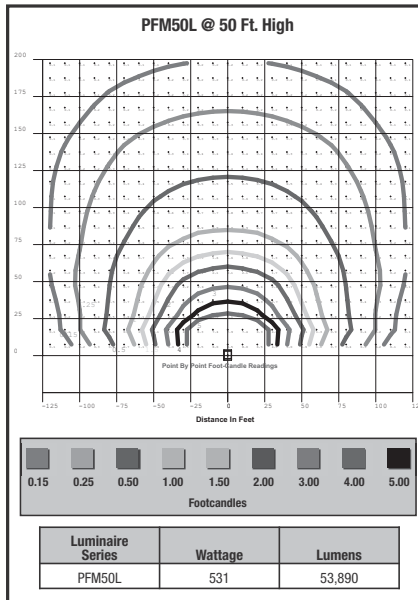
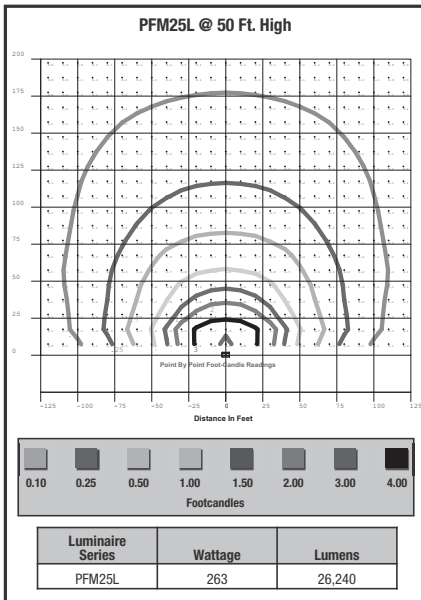


PFM25L Model



PFM50L Model

Photometric Data:



Weights:

PFM Model	Lbs.
PFM25L	52.00
PFM50L	106.00

2L