

Condulet® Cable Outlet Boxes

GRUE Series

Cl. I, Div. 1 & 2, Groups B, C, D NEMA 3, 4
 Cl. II, Div. 1, Groups E, F, G
 Cl. II, Div. 2, Groups F, G
 Cl. III

3F

Applications:

The GRUE hazardous outlet box is intended for use within hazardous areas to:

- Terminate cable connectors
- Interconnect lengths of conduit
- Protect conductors in threaded rigid conduit
- Act as pull and splice boxes
- Change conduit direction
- Provide access to conductors for maintenance and future system changes

Features:

- Five threaded hub locations; includes three close-up plugs
- Tapered threaded hubs to provide ground continuity
- Green ground screw
- Smooth, rounded internal bushing in each hub protects conductor installation
- External threaded body and jar style cover provides additional wiring room
- Cover threads are 16 pitch
- Cast ears on cover to permit easy removal and tightening
- Elevated mounting feet, enabling hubs to accept cable connector termination and removal when surface mounted
- No stand-offs required for mounting feet when installing larger potted barrier glands
- Neoprene o-ring standard to meet NEMA 4 requirements
- Copper-free aluminum body and cover provide resistance to corrosive atmospheres
- Surface cover furnished with box
- Sealing cover available with 3/4" hub

Certifications and Compliances:

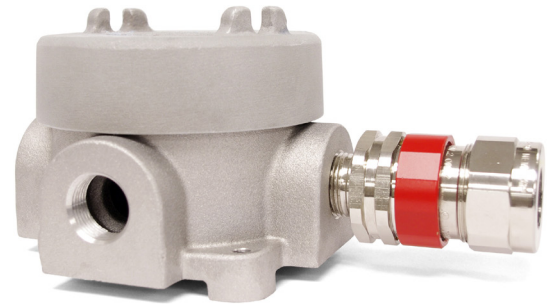
- NEC/CEC
 - Class I, Divisions 1 and 2, Groups B, C, D
 - Class II, Division 1, Groups E, F, G
 - Class II, Division 2, Groups F, G
 - Class III
- UL Standard: 1203
- ANSI Standard: C33.27
- CSA Standard: C22.2 No. 30
- NEMA 3, 4

Options:

Description	Suffix
To order assembled with sealing cover	SC‡
1 row, 4 terminal blocks	TB14*
1 row, 6 terminal blocks	TB16*
1 row, 8 terminal blocks	TB18*
1 row, 4 terminal blocks	DIN14†
1 row, 6 terminal blocks	DIN16†
1 row, 8 terminal blocks	DIN18†

Replacement Parts:

5" diameter sealing cover	GRUE092
5" diameter blank replacement cover	GRUE09



Standard Material:

- Body and cover – copper-free aluminum

Standard Finish:

- Aluminum – natural

Size Ranges:

- Hub – 1/2" to 1"
- Cover opening – 5" diameter

Ordering Information:

Hub Size	Cat. #
1/2"	GRUE19
3/4"	GRUE29
1"	GRUE39

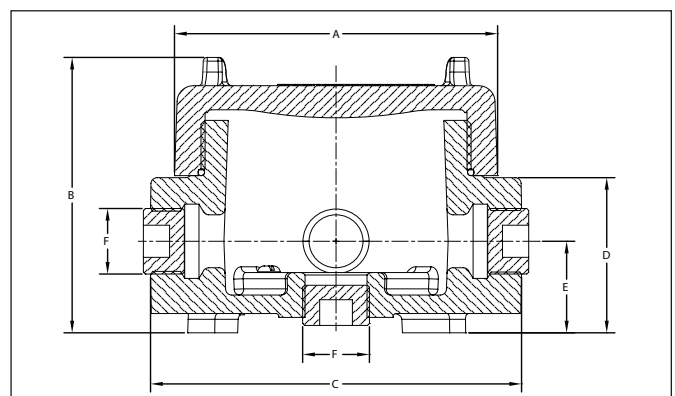
Flat Cover:

Cover Opening Dia.	Cat. #
5	GRUE09

Sealing Cover:

Cover Opening Dia.	Cat. #
5	GRUE092

Dimensions In Inches:



A	B	C	D	E	F
4-15/16	4-9/32	5-21/32	2-13/32	1-7/16	1/2" NPT
4-15/16	4-9/32	5-21/32	2-13/32	1-7/16	3/4" NPT
4-15/16	4-9/32	5-21/32	2-13/32	1-1/4	1" NPT

‡Sealing cover cannot be used with TB* or DIN* options.

*Products provide a 30 amp, 300V Phoenix G5/4 or G5/6 terminal block for wire size #10 AWG, directly mounted to a mounting strap.

†Products provide a 24 amp, 250V Phoenix MBK5 type terminal block for wire size #24 to #12 AWG mounted on a DIN rail.