

# 5C AFU Mine Signal Switches

NEMA 3  
Raintight  
Wet Locations

600 VAC

## Applications:

- AFU mine signal switches are used:
- For signalling circuits or remote control of magnetic motor starters
  - In non-hazardous areas of mines or process industry facilities where a rugged enclosure is needed for protection from falling ore and other material or dripping water
  - Mounted on walls or in shaft ways and actuated by pulling line or cable attached to the loop at the bottom

## Features:

- Sturdy raintight enclosure with heavy mounting lugs
- Wires enter enclosure through clearance holes in the underside
- Switches are actuated by a spring-loaded plunger which returns to the normal position when the operating force is removed
- Units are furnished with heavy duty motor control push buttons. Several of these may be interconnected electrically for remote control of a magnetic motor starter from more than one location

## Certifications and Compliances:

- NEMA: 3

## Standard Materials:

- Enclosure – *Feraloy*® iron alloy
- Plunger – steel
- Loop – bronze

## Standard Finishes:

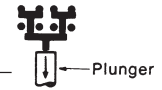
- *Feraloy* – electrogalvanized and aluminum acrylic paint
- Steel – electrogalvanized
- Bronze – natural



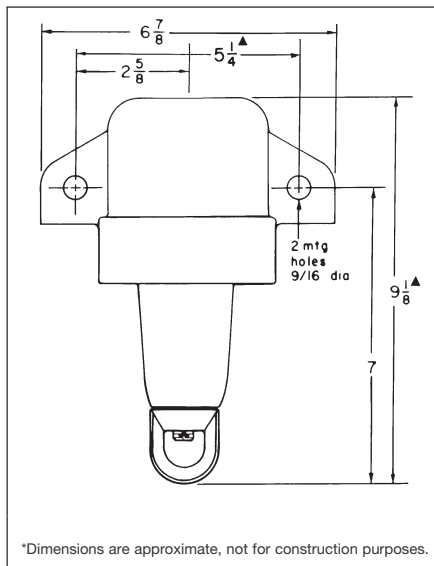
AFU mine signal switch with pushbutton switch (cover removed)

## Ordering Information

Maximum Wt. of Line or Cable Without Actuating Switch (lbs.)	Total Operating Force Required (lbs.)	With Pushbutton Heavy Duty 600 VAC Max. Cat. #
25	50	AFU254
15	25	AFU154



## Dimensions In Inches\*:



5C