

TYPES YBA-A

BREAK-AWAY™ HYLUG™

Copper and Aluminum
Compression Terminals

UL Listed 90° C,
600 Volts to 35 kV

The Break-Away line of Copper and Aluminum HYLUG™ terminals are designed to provide maximum field flexibility by allowing the installer (using the break-away feature) to easily convert a two-hole terminal into a one-hole terminal to suit the application.

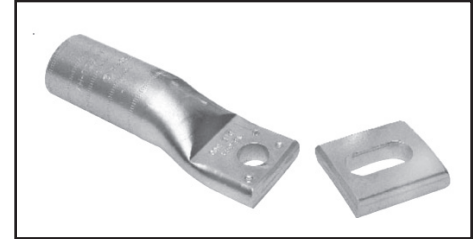
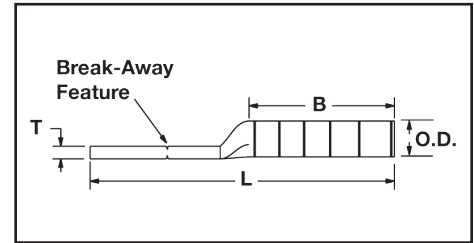
The Break-Away HYLUG™ line of terminals encompasses a wide range of features that offers the installer the flexibility to meet the requirements of challenging projects.

Features & Benefits

- Break-Away feature allows for field modification of the terminal from a two-hole design to a one-hole design while retaining UL Listing and CSA Certification



- Field modification of the terminal does not require specialized tooling or training
- Stud size is 1/2" on the first stud as well as the slotted second stud
- Slotted second stud provides built in flexibility for the terminal to conform to various bus bar dimensions. With the slotted second stud the terminal can be used on two-hole spacing ranging from 1.75" down to 1.00" for 1/2" stud size
- Narrow tongue design allows for the terminal to fit into tight spaces
- Accommodates a wide range of conductor combinations (AWG, Compact, DLO, Flex and Metric)
- Break-Away HYLUG™ line of terminals



can be installed with standard BURNDY® tooling such as PAT750XT-18V and U-Dies

- Terminals are range taking when installed with Y644 or PAT644 tooling platforms



AL9CU



Aluminum Conductor

Catalog Number	Conductor Size (Concentric and Compact)	Dimensions						Installation Tooling (# of crimps)						
		Stud Hole Spacing	Stud Hole Size	Tongue Width	B	T	L	Dieless	MD6, MD7, MD7-34R platforms OUR840**	Y500CTHS, PAT60018V, PATMD6 platform	Y35, Y39, Y750, *Y46, PAT750, *PAT46 platforms	Color Code	Die Index	
YBA25A	1/0	1" to 1.75"	1/2"	1.03"	1.05"	0.17"	4.59"	MY29 (MY29 platform tools can only be used on Code Conductor), PAT644 & Y644 platforms (1), 4-POINT® Y81K, PAT81K, Y4PC, PAT4PC platforms (2)	W241 (2) X241 (4)	W241 (2)	U25ART (1)	Tan	296	
YBA26A	2/0				1.17"	0.20"	4.78"		—	—	U26ART (2)	Olive	297	
YBA27A	3/0			1.04"	1.31"	0.26"	5.02"		—	—	U27ART (2)	Ruby	467	
YBA28A	4/0			1.17"	1.39"	0.30"	5.19"		W660 (4) X660 (8)	W660 (4)	U28ART (2)	White	298	
YBA29A	250 kcmil			1.26"	1.45"	0.33"	5.28"	PAT644 & Y644 platforms (1), 4-POINT® Y81K, PAT81K, Y4PC, PAT4PC platforms (2)	—	—	U29ART (2)	Red	324	
YBA30A	300 kcmil			1.38"	1.53"	0.36"	5.64"		—	—	U30ART (2)	Blue	470	
YBA31A	350 kcmil			1.52"	1.85"	0.39"	6.07"	PAT644 & Y644 platforms (1), 4-POINT® Y81K, PAT81K, Y4PC, PAT4PC platforms (4)	—	—	U31ART (2)	Brown	299	
YBA32A	400 kcmil								—	—	U32ART (4)	Green	472	
YBA34A	500 kcmil			1.62"	2.34"	0.46"	6.80"		—	—	U34ART (4)	Pink	300	
YBA36A	600 kcmil								—	—	U36ART (4)	Black	473	
YBA39A	700 & 750 kcmil			1.31"	2.47"	0.52"	7.09"		—	—	U39ART-2 (2)	Yellow	936	
YBA39A	700 & 750 kcmil			1.62"	2.46"	0.43"	7.07"		—	—	U39ART-2 (2)	Yellow	936	
YBA42A	900 kcmil AL 600 kcmil CU			1.62"	2.46"	0.43"	7.07"	Y644MBH (2) Y644HSXT (2) PAT644XT -18V (2)	—	—	U42ART (4) [▲]	Gray	303	
YBA44A	1000 kcmil			1.65"	2.74"	0.55"	7.76"	Y644MBH (1)	—	—	P44ART [†] (4)	Brown	302	

† Can only be crimped with PAT46 or Y46 platform tools using the P44ART die.

* Y46 and PAT46 platforms require PUADP-1 adaptor to use U dies

** OUR840 can use X-style dies only.

† U die for 900 AL only