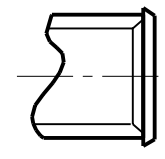
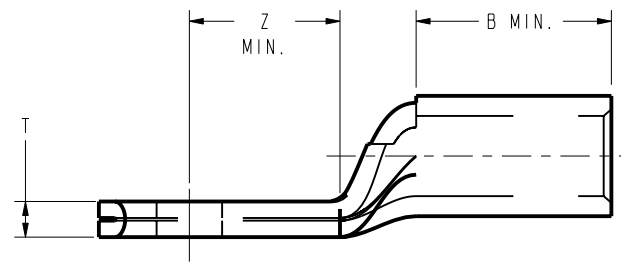
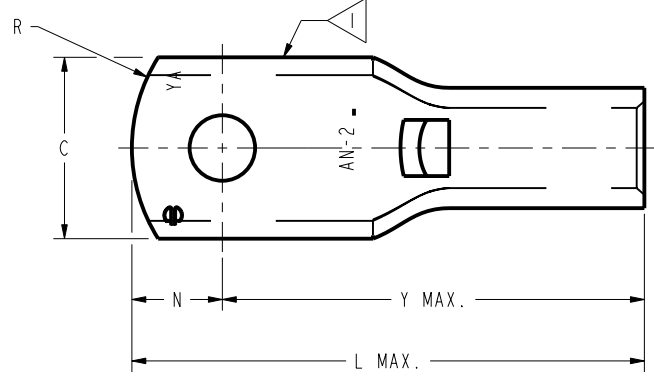


DRAWING NO. SD034764		7		6		5		4		3		2		1											
COPPER AIRCRAFT CABLE MIL-W-5036	MS20659 DASH NO.	STUD SIZE	CATALOG NUMBER	C ±.020	N ±.010	Z MIN	Y MAX	L MAX.	T ±.015	B MIN	R REF	TOOL INDEX NUMBER	REVISION	DATE	DESCRIPTION	ECO	BY	CHK.							
AN-8	----	6	YAV8C-L15	.407	.203	.278	.942	1.150	.069	.38	.408	.69	38	A	4/1/2009 12:00:00 PM	REDRAWN IN PRO/E	17301	IA	BSK						
	140	8	YAV8C-L14																						
	----	10	YAV8C-L22																						
	107	10	YAV8C-L																						
	----	10-5MM	YAV8C-L31	.455	.228	.322	.986	1.219	.065	.38															
	141	1/4	YAV8C-L1																						
	108	5/16	YAV8C-L2																						
	129	3/8	YAV8C-L3	.568	.284	.344	1.008	1.297	.053	.69															
	----	3/8	YAV8C-L26																						
	142	3/8-10MM	YAV8C-L32																						
	142	1/2	YAV8C-L4	.832±.03	.500	.621	1.285	1.790	.038	.75															
	----	5/8	YAV8C-L39																						
12	YAV8C-L86	.407	.203								.260	.925	1.133	.069	.38										
AN-6	130	10	YAV6C-L1	.480	.240	.288	1.062	1.307	.069	.38	.470	.69	39												
	----	10-5MM	YAV6C-L12																	.500	.250	.339	1.113	1.368	.065
	109	1/4	YAV6C-L																	.480	.240	.288	1.062	1.307	.069
	131	5/16	YAV6C-L4	.600	.300	.351	1.125	1.430	.058	.69															
	110	3/8	YAV6C-L2																	.480	1.254	1.559			
	----	3/8	YAV6C-L22																	.687	.437	.453	1.227	1.669	.053
	143	3/8-10MM	YAV6C-L26	.600	.300	.351	1.125	1.430	.058	.69															
143	1/2	YAV6C-L10	.770/.710	.375	.488	1.262	1.642	.058	.69																
AN-4	144	10	YAV4C-L3	.547	.250	.277	1.113	1.368	.081	.38	.470	.69	40												
	----	10-5MM	YAV4CL-21																	.275	.277	1.113	1.393		
	111	1/4	YAV4C-L																	.250	.345	1.181	1.461		
	----	1/4	YAV4C-L30	.275	.277	1.113	1.393	.069	.69																
	----	1/4	YAV4C-L31																						
	132	5/16	YAV4C-L4	.625	.313	.330	1.166	1.484	.062	.69															
	112	3/8	YAV4C-L2																	.480	1.316	1.634			
	----	3/8	YAV4C-L17																	.330	1.166	1.484			
	145	3/8-10MM	YAV4C-L22	.730	.375	.465	1.301	1.681	.062	.69															
	145	1/2	YAV4C-L5																						

REV	DATE	DESCRIPTION	ECO	BY	CHK.
A	4/1/2009 12:00:00 PM	REDRAWN IN PRO/E	17301	IA	BSK



6 BELLED VIEW

- NOTES:
- 1 DUE TO METHODS OF MANUFACTURING, SERRATIONS APPEAR ON TONGUE.
  2. MATERIAL: COPPER TUBING
  3. FINISH: TIN PLATED 5
  4. ALL ITEMS ARE LISTED BY UNDERWRITERS LABS PER CONTROL NUMBER 670-B, FILE NUMBER E9498, WHITE CARD.
  - 5 ADD "-NK" SUFFIX FOR NICKEL PLATING.
  - 6 ADD "B" SUFFIX FOR BELLED BARREL. BELLED VERSIONS OF THESE HYLUGS™ DONT'T CONFORM TO THE MS20659 DASH NO.

CAT.NO. YAV6C-L10B  
SUPERSEDES: SAI6635

TO ORDER BURNDY® PRODUCTS CALL		HYLUG™	
UNITED STATES 1-800-346-4175 (LONDONDERRY, NH)		ITEM NO: N/A	CAT. NO: YAVL (SEE TABLE)
CANADA: 1-800-361-6975 (QUEBEC) 1-800-387-6487 (ALL OTHER PROVINCES)		DRAWN BY: ESK 02-02-73	CHECKER: TB 06-01-77
FOR PRODUCT INFO: <a href="http://www.burndy.com">http://www.burndy.com</a>		DSN APPVL: TB 06-01-77	MFG APPVL: -- --
		QA APPVL: -- --	MKT APPVL: -- --
		PROD FAM: PROD./SMALL COMPRE.	DRAWING NO: SD034764
		PROJECT #: --	SIZE: D
		DOCUMENT TYPE: Sales	SHEET 1 OF 3
		REL LEVEL: Released	SCALE: 3:1
		<b>BURNDY</b>	

REV: PE0200