

DRAWING NO.
10001062

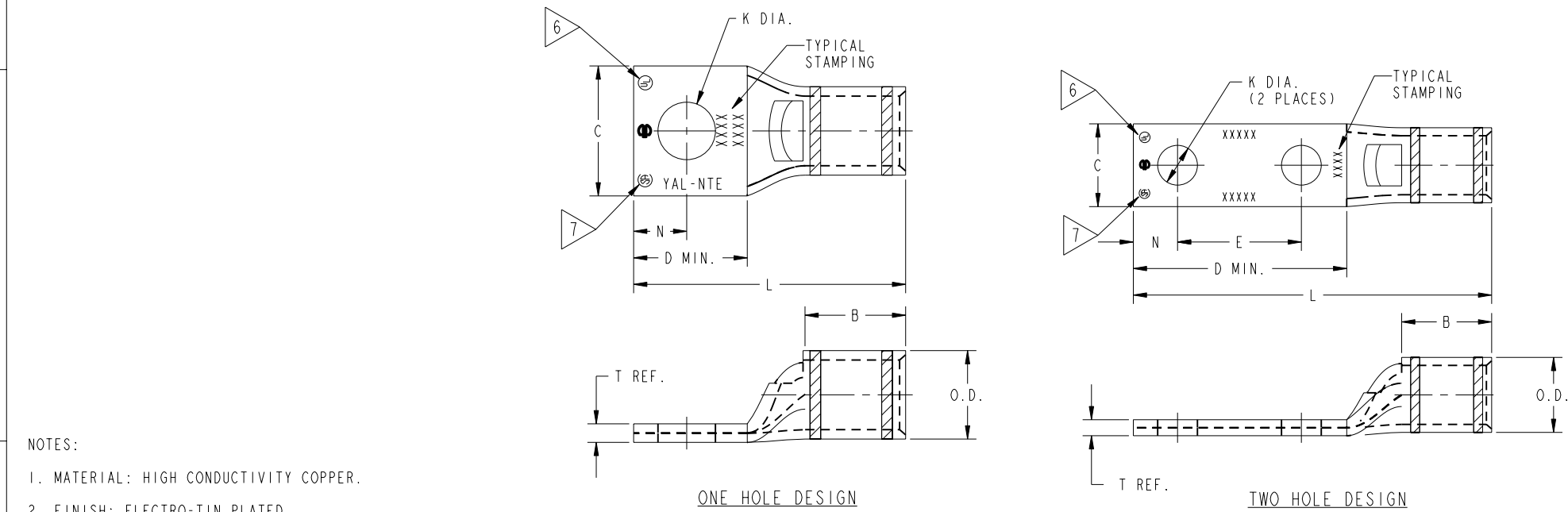
| CATALOG NUMBER | MAX. STRANDED COPPER CONDUCTOR ACCOMMODATED | | STUD SIZE | METRIC STUD SIZE | NUMBER OF HOLES | DIMENSIONS | | | | | | | | |
|-----------------|---|------------------------|-----------|------------------|-----------------|------------|-----------|-----------|-----------|----------|------------|----------|-----------|---------|
| | CODE (AWG) | METRIC SIZE (CLASS 2) | | | | B | C MAX. | D MIN. | E | K DIA. | L | N | O.D. | T REF. |
| YA30L24NI00T38E | 300 kcmil | 150mm ² STR | 3/8 | --- | 1 | 1.03 [26] | 1.00 [25] | .85 [22] | --- | .41 [10] | 2.44 [62] | .41 [10] | .81 [21] | .16 [4] |
| YA342LNN119T12E | 500 kcmil | 240mm ² STR | 1/2 | M12 | 2 | 1.27 [32] | 1.19 [30] | 3.05 [77] | 1.75 [44] | .56 [14] | 5.06 [129] | .63 [16] | 1.05 [27] | .22 [6] |
| YA342LNN131T12E | 500 kcmil | 240mm ² STR | 1/2 | M12 | 2 | 1.27 [32] | 1.31 [33] | 3.05 [77] | 1.75 [44] | .56 [14] | 5.06 [129] | .63 [16] | 1.05 [27] | .22 [6] |
| YA362LNN114T12E | 600 kcmil | 300mm ² STR | 1/2 | M12 | 2 | 1.32 [35] | 1.14 [29] | 3.05 [77] | 1.75 [44] | .56 [14] | 5.23 [133] | .63 [16] | 1.18 [30] | .26 [7] |
| YA392LNN131T12E | 750 kcmil | 375mm ² STR | 1/2 | M12 | 2 | 1.42 [36] | 1.31 [33] | 3.05 [77] | 1.75 [44] | .56 [14] | 5.37 [137] | .63 [16] | 1.30 [33] | .27 [7] |

| REV | DATE | DESCRIPTION | ECO | BY | C'H'K. |
|-----|------------------------|-----------------------|-------|----|--------|
| M | 10/31/2011 00:00:00 AM | UPDATED AS PER MARKUP | 25813 | AD | MA |

TOLERANCE BLOCK

| CONNECTOR SIZE | TOLERANCES | | | | | |
|----------------|------------|------|--------|------|------|------|
| | B | E | K DIA. | L | N | O.D. |
| -8C THRU -25 | ±.06 | ±.02 | ±.02 | ±.09 | ±.03 | ±.01 |
| -26 THRU -34 | ±.08 | ±.02 | ±.02 | ±.12 | ±.03 | ±.01 |
| -35 AND UP | ±.09 | ±.02 | ±.02 | ±.15 | ±.03 | ±.01 |

| INSTALLATION TOOLING (# CRIMPS) | | | | | | | | | | |
|------------------------------------|------------|-----------|---------------|----------------------|-------------------------|-------------------------|-------------------------|-----------------------|-------------------------|---------|
| CATALOG NO. | COLOR CODE | DIE INDEX | HYDRAULIC | | | | | | WIRE STRIP LENGTH | |
| | | | DIELESS Y644M | DIELESS 4 POINT TOOL | Y35, Y39, Y750, PAT750 | Y46 PAT46 | Y45 | Y48B | | Y60BHU |
| YA30L24NI00T38E | WHITE | 17 298 | ONE (1) | SEE TABLE | U30RT (2) U28ART (2) | U30RT (2) U28ART (2) | U30RT (2) U28ART (2) | C30R (1) C28AR (1) | L30RT (1) L28ART (1) | 1-1/16" |
| YA342LNN119T12E YA342LNN131T12E | BROWN | 20 299 | ONE (1) | | U34RT (2) U31ART (1) | U34RT (2) U31ART (1) | U34RT (2) U31ART (1) | C34R (1) C31AR (1) | L34RT (1) L31ART (1) | 1-5/16" |
| YA362LNN114T12E | GREEN | 22 472 | ONE (1) | | U36RT (2) U32ART (2) | U36RT (2) U32ART (2) | U36RT (2) U32ART (2) | C36R (1) C32AR (1) | L36RT (1) L32ART (1) | 1-7/16" |
| YA392LNN131T12E | BLACK | 24 | ONE (1) | | U39RT (2) P39RT (2) | U39RT (2) P39RT (2) | U39RT (2) S39RT (2) | C39R (1) C36AR (1) | L39RT (1) L36ART (1) | 1-1/2" |



- NOTES:
- MATERIAL: HIGH CONDUCTIVITY COPPER.
 - FINISH: ELECTRO-TIN PLATED.
 - CATALOG # PT6515 ADAPTOR IS REQUIRED TO USE "U" DIES IN Y45 SERIES TOOLS.
 - CATALOG # PUADP-1 ADAPTOR IS REQUIRED TO USE "U" DIES IN Y46 SERIES TOOLS.
 - DIMENSIONS IN BRACKETS [] ARE IN MILLIMETERS ROUNDED OFF TO THE NEAREST MILLIMETER, UNLESS OTHERWISE NOTED, AND ARE FOR REFERENCE ONLY.
 - CONNECTORS ARE UL LISTED.
 - CONNECTORS ARE CSA CERTIFIED.
 - "X", "W-RT", "W-VT", "U", & "L" DIE SETS ARE COLOR CODED. "C" DIES ARE NOT COLOR CODED.
 - THE FOLLOWING CONNECTORS ARE RANGE TAKING WHEN CRIMPED ONTO COPPER CODE CONDUCTOR USING THE Y644M FAMILY OF TOOLS.

- 4 PT. STYLE LOADING REFERS TO THE FOLLOWING DIELESS TOOLS: (PAT81KFT18V, Y81KFT, Y81KFTMBH, PAT4PC83418V, Y4PC834, Y4PC834MBH)
- REFER TO TABLE FOR CONNECTOR RANGE DATA FOR 4 PT. TOOL.

COPPER HYLUG™ & HYLINK™ CONNECTORS
TYPES YA, YA-L, YAB, YS, YS-L, YST, YS-T, YSP-T

| - CATALOG NO. - | | STANDARD WIRE SIZE | EXPANDED WIRE RANGE |
|-----------------|----------|--------------------|---------------------|
| TERMINAL* | SPLICE** | | |
| YA6C- | YS6C- | #6 AWG | #6 AWG |
| YA5C- | YS5C- | #5 AWG | #5-#6 AWG |
| YA4C- | YS4C- | #4 AWG | #4-#6 AWG |
| YA3C- | YS3C- | #3 AWG | #1-#6 AWG |
| YA2C- | YS2C- | #2 AWG | #2-#1 AWG |
| YA1C- | YS1C- | #1 AWG | #1-#6 AWG |
| YA25- | YS25- | 1/0 AWG | 1/0-#6 AWG |
| YA26- | YS26- | 2/0 AWG | 2/0-#4 AWG |
| YA27- | YS27- | 3/0 AWG | 3/0-#2 AWG |
| YA28- | YS28- | 4/0 AWG | 4/0-#1 AWG |
| YA29- | YS29- | 250 kcmil | 250 kcmil-1/0 AWG |
| YA30- | YS30- | 300 kcmil | 300 kcmil-2/0 AWG |
| YA31- | YS31- | 350 kcmil | 350 kcmil-3/0 AWG |
| YA32- | YS32- | 400 kcmil | 400 kcmil-4/0 AWG |
| YA34- | YS34- | 500 kcmil | 500 kcmil-4/0 AWG |
| YA36- | YS36- | 600 kcmil | 600-250 kcmil |
| YA39- | YS39- | 750 kcmil | 750-400 kcmil |
| YA40- | YS40- | 800 kcmil | 800-500 kcmil |
| YA44- | YS44- | 1000 kcmil | 1000-750 kcmil |

* 1 CRIMP
** 1 CRIMP PER SIDE

REFERENCE: SD213874
SD213749

| | | | |
|---|--|-------------------------------|---------------------------------|
| TO ORDER BURNDY® PRODUCTS CALL | | HYLUG™ COPPER OEM EQUIPMENT | |
| UNITED STATES 1-800-346-4175 (LONDONDERRY, NH) | | ITEM NO: N/A | CAT. NO: YA-L-NT-E (TABLE) |
| CANADA: 1-800-361-6975 (QUEBEC) 1-800-387-6487 (ALL OTHER PROVINCES) | | DRAWN BY: P.LAPONIUS 02/13/02 | CHECKER: G.ZAHLMAN 03/19/02 |
| FOR PRODUCT INFO: http://www.burndy.com | | DSN APPVL: G.ZAHLMAN 03/19/02 | MFG APPVL: N/A |
| | | QA APPVL: J.BRODEUR 03/19/02 | MKT APPVL: R.ROBICHEAU 03/19/02 |
| | | PROD FAM: CM&R COMPRESSION | DRAWING NO: 10001062 |
| | | PROJECT #: -- | SCALE: 1:000 |
| | | DOCUMENT TYPE: Sales | SHEET 1 OF 4 |
| | | REL LEVEL: Released | REV: M |

REV: PE0200

DRAWING NO.
10001062

| REV | DATE | DESCRIPTION | ECO | BY | C'H'K. |
|-----|------------------------|-----------------------|-------|----|--------|
| M | 10/31/2011 00:00:00 AM | UPDATED AS PER MARKUP | 25813 | AD | MA |

| CATALOG NUMBER | STRANDED COPPER CONDUCTOR ACCOMMODATED | | STUD SIZE | METRIC STUD SIZE | DIMENSIONS | | | | | | | |
|----------------|--|-------------------------------|-----------|------------------|------------|----------|---------|-----------|---------|----------|---------|---------|
| | CODE (AWG) | METRIC SIZE (CLASS 2) | | | B | C MAX. | K DIA. | L | N | O.D. | T REF. | Z MIN. |
| YA25LN50T14E | 1/0 AWG | ---- | 1/4 | M6 | .88 [22] | .50 [13] | .27 [7] | 1.84 [47] | .25 [6] | .51 [13] | .12 [3] | .33 [8] |
| YA25LN64T516E | | | 5/16 | ---- | .88 [22] | .64 [16] | .33 [8] | 1.96 [50] | .34 [9] | | | .36 [9] |
| YA26LN50T14E | 2/0 AWG | 70mm ² STR [11] | 1/4 | M6 | .94 [24] | .50 [13] | .27 [7] | 1.94 [49] | .25 [6] | .56 [14] | | .33 [8] |
| YA30LN98T516E | 300 kcmil | 150mm ² STR [16.2] | 5/16 | ---- | 1.03 [26] | .98 [25] | .33 [8] | 2.31 [59] | .34 [9] | .81 [21] | .16 [4] | .36 [9] |

TOLERANCE BLOCK

| CONNECTOR SIZE | TOLERANCES | | | | |
|----------------|------------|--------|------|------|------|
| | B | K DIA. | L | N | O.D. |
| -8C THRU -25 | ±.06 | ±.02 | ±.09 | ±.03 | ±.01 |
| -26 THRU -34 | ±.08 | ±.02 | ±.12 | ±.03 | ±.01 |
| -35 AND UP | ±.09 | ±.02 | ±.15 | ±.03 | ±.01 |

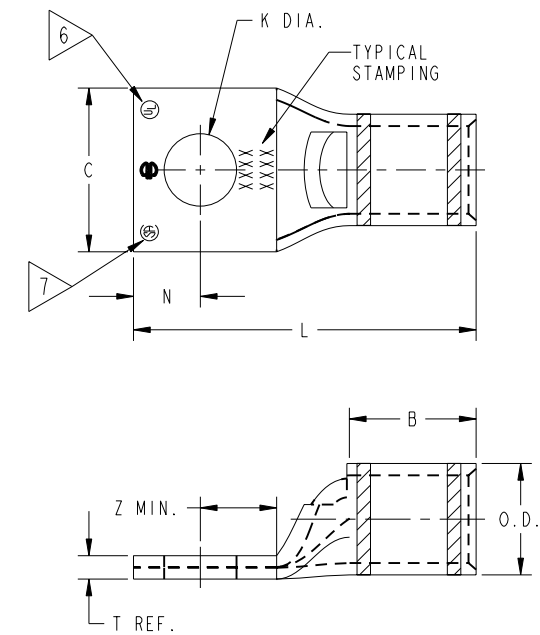
INSTALLATION TOOLING (# CRIMPS)

| CATALOG NO. | COLOR CODE | DIE INFORMATION | | HYDRAULIC | | | | | MECHANICAL | | | HYDRAULIC | DIELESS (# CRIMPS) | WIRE STRIP LENGTH | | |
|-------------------------------|------------|-----------------|---------------|---------------|----------------------|------------------------|-----------------------|-----------------------|---------------------|----------|----------|----------------------|----------------------|----------------------|---|---------------|
| | | DIE INDEX | TYPE | DIELESS Y644M | DIELESS 4 POINT TOOL | Y35, Y39, Y750, PAT750 | Y46 PAT46 | Y45 | Y48B | Y60BHU | OUR840 | MD6 MD7 | | | MD6--R2 MD7-34R | PATMD6 PAT600 |
| YA25LN50T14E YA25LN64T516E | PINK | 12 348 | PINK DIE SET | ONE (1) | SEE TABLE | U25RT(1) U2CABT(1) | U25RT(1) U2CABT(1) | U25RT(1) U2CABT(1) | ---- | ---- | X25RT(2) | W25RT(2) W25VT(2) | W25RT(2) W25VT(2) | W25RT(2) W25VT(2) | MECHANICAL: MY29-3 (1) MY29-11 (1) HYDRAULIC: BAT644M (1) | 15/16" |
| YA26LN50T14E | BLACK | 13 | BLACK DIE SET | | | U26RT(1) | U26RT(1) | U26RT(1) | ---- | ---- | X26RT(1) | W26RT(2) W26VT(2) | W26RT(2) W26VT(2) | W26RT(2) W26VT(2) | | 1.00" |
| YA30LN98T516E | WHITE | 17 298 | WHITE DIE SET | | | U30RT(2) U28ART(2) | U30RT(2) U28ART(2) | U30RT(2) U28ART(2) | C30R(2) C28AR(2) | L30RT(1) | ---- | ---- | W30VT(2) | W30VT(2) | | 1-1/8" |

COPPER HYLUG™ & HYLINK™ CONNECTORS
TYPES YA, YA-L, YAB, YS, YS-L, YST, YS-T, YSP-T

| CATALOG NO. | | STANDARD WIRE SIZE | EXPANDED WIRE RANGE |
|----------------------------------|----------------------------------|--|--|
| TERMINAL* | SPLICE** | | |
| YA6C- YA5C- YA4C- YA3C- | YS6C- YS5C- YS4C- YS3C- | #6 AWG #5 AWG #4 AWG #3 AWG | #6 AWG #5-#6 AWG #4-#6 AWG #1-#6 AWG |
| YA2C- YA1C- YA25- YA26- | YS2C- YS1C- YS25- YS26- | #2 AWG #1 AWG 1/0 AWG 2/0 AWG | #2-#1 AWG #1-#6 AWG 1/0-#6 AWG 2/0-#4 AWG |
| YA27- YA28- YA29- YA30- | YS27- YS28- YS29- YS30- | 3/0 AWG 4/0 AWG 250 kcmil 300 kcmil | 3/0-#2 AWG 4/0-#1 AWG 250 kcmil-1/0 AWG 300 kcmil-2/0 AWG |
| YA31- YA32- YA34- YA36- | YS31- YS32- YS34- YS36- | 350 kcmil 400 kcmil 500 kcmil 600 kcmil | 350 kcmil-3/0 AWG 400 kcmil-4/0 AWG 500 kcmil-4/0 AWG 600-250 kcmil |
| YA39- YA40- YA44- | YS39- YS40- YS44- | 750 kcmil 800 kcmil 1000 kcmil | 750-400 kcmil 800-500 kcmil 1000-750 kcmil |

* 1 CRIMP
** 1 CRIMP PER SIDE



- NOTES:
- MATERIAL: HIGH CONDUCTIVITY COPPER.
 - FINISH: ELECTRO-TIN PLATED.
 - CATALOG # PT6515 ADAPTOR IS REQUIRED TO USE "U" DIES IN Y45 SERIES TOOLS.
 - CATALOG # PUADP-1 ADAPTOR IS REQUIRED TO USE "U" DIES IN Y46 SERIES TOOLS.
 - DIMENSIONS IN BRACKETS [] ARE IN MILLIMETERS ROUNDED OFF TO THE NEAREST MILLIMETER, UNLESS OTHERWISE NOTED, AND ARE FOR REFERENCE ONLY.
 - CONNECTORS ARE UL LISTED.
 - CONNECTORS ARE CSA CERTIFIED.
 - "X", "W-RT", "W-VT", "U", & "L" DIE SETS ARE COLOR CODED. "C" DIES ARE NOT COLOR CODED.
 - THE FOLLOWING CONNECTORS ARE RANGE TAKING WHEN CRIMPED ONTO COPPER CODE CONDUCTOR USING THE Y644M FAMILY OF TOOLS.
 - 4 PT. STYLE LOADING REFERS TO THE FOLLOWING DIELESS TOOLS: (PAT81KFT18V, Y81KFT, Y81KFTMBH, PAT4PC83418V, Y4PC834, Y4PC834MBH)
 - REFER TO TABLE FOR CONNECTOR RANGE DATA FOR 4 PT. TOOL.

REF: SD213874

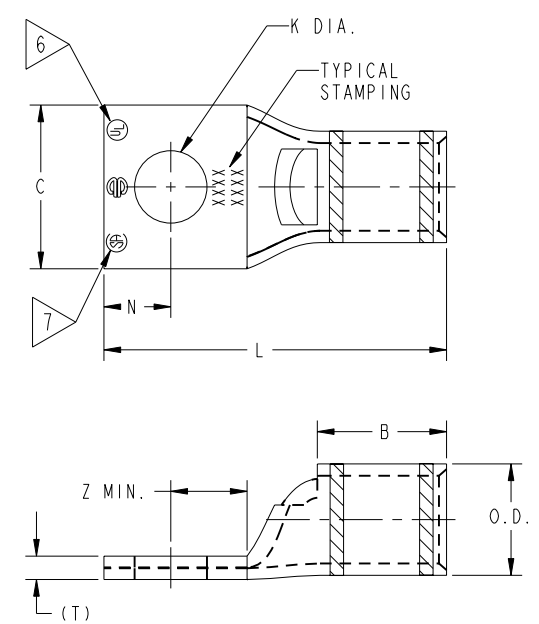
| | | |
|--|-----------------------------|----------------------|
| <p>TO ORDER BURNDY® PRODUCTS CALL</p> <p>UNITED STATES 1-800-346-4175 (LONDONDERRY, NH)</p> <p>CANADA: 1-800-361-6975 (QUEBEC) 1-800-387-6487 (ALL OTHER PROVINCES)</p> <p>FOR PRODUCT INFO: http://www.burndy.com</p> | HYLUG™ COPPER OEM EQUIPMENT | |
| | ITEM NO: | N/A |
| | CAT. NO: | YA-L-NT-E (TABLE) |
| | DRAWN BY: | P. LAPONIUS 02/13/02 |
| | CHECKER: | G. ZAHLMAN 03/19/02 |
| DSN APPVL: | G. ZAHLMAN 03/19/02 | |
| MFG APPVL: | N/A | |
| QA APPVL: | J. BRODEUR 03/19/02 | |
| MKT APPVL: | R. ROBICHEAU 03/19/02 | |
| PROD FAM: | CM&R COMPRESSION | |
| PROJECT #: | --- | |
| DOCUMENT TYPE: | Sales | |
| REL LEVEL: | Released | |
| DRAWING NO | 10001062 | |
| REV | M | |

REV: PE0200

| CATALOG NUMBER | STRANDED COPPER CONDUCTOR ACCOMMODATED | | STUD SIZE | METRIC STUD SIZE | DIMENSIONS | | | | | | | |
|----------------|--|------------------------|-----------|------------------|------------|-----------|----------|-----------|----------|-----------|---------|----------|
| | CODE (AWG) | METRIC SIZE (CLASS 2) | | | B | C MAX. | K DIA. | L | N | O.D. | T REF. | Z MIN. |
| YA34L6N119T12E | 500 kcmil | 240mm ² STR | 1/2 | M12 | 1.27 [32] | 1.19 [30] | .53 [13] | 3.31 [84] | .63 [16] | 1.06 [27] | .23 [6] | .64 [16] |
| YA34L6N131T12E | 500 kcmil | 240mm ² STR | | | 1.27 [32] | 1.31 [33] | .53 [13] | 3.31 [84] | .63 [16] | 1.06 [27] | .23 [6] | .64 [16] |
| YA39L6N131T12E | 750 kcmil | 375mm ² STR | | | 1.42 [36] | 1.31 [33] | .53 [13] | 3.61 [92] | .63 [16] | 1.30 [33] | .27 [7] | .64 [16] |

| CONNECTOR SIZE | TOLERANCES | | | | |
|----------------|------------|--------|------|------|------|
| | B | K DIA. | L | N | O.D. |
| -8C THRU -25 | ±.06 | ±.02 | ±.09 | ±.03 | ±.01 |
| -26 THRU -34 | ±.08 | ±.02 | ±.12 | ±.03 | ±.01 |
| -35 AND UP | ±.09 | ±.02 | ±.15 | ±.03 | ±.01 |

| INSTALLATION TOOLING (# CRIMPS) | | | | | | | | | | | | | | | | |
|---------------------------------|------------|-----------------|---------------|---------------|----------------------|------------------------|-----------|-----------|------------|-----------|--------|-----------|--------------------|-------------------|---------------------------------------|------------------------|
| CATALOG NO. | COLOR CODE | DIE INFORMATION | | HYDRAULIC | | | | | MECHANICAL | | | HYDRAULIC | DIELESS (# CRIMPS) | WIRE STRIP LENGTH | | |
| | | DIE INDEX | TYPE | DIELESS Y644M | DIELESS 4 POINT TOOL | Y35, Y39, Y750, PAT750 | Y46 PAT46 | Y45 | Y48B | Y60BHU | OUR840 | MD6 MD7 | | | MD6--R2 MD7-34R | PATMD6 PAT600 |
| YA34L6N119T12E | BROWN | 20 | BROWN DIE SET | ONE (1) | SEE TABLE | U34RT(2) | U34RT(2) | U34RT(2) | C34R(1) | L34RT(1) | ---- | ---- | W34RT(2) | W34VT(2) | MECHANICAL: MY29-3 (1) MY29-11 (1) | 1-5/16" |
| YA34L6N131T12E | | 299 | | | | U31ART(1) | U31ART(2) | U31ART(1) | C34AR(1) | | | | | | | |
| YA39L6N131T12E | 24 | BLACK DIE SET | | | | U39RT(2) | U39RT(2) | U39RT(2) | C36AR(1) | L36ART(1) | ---- | ---- | ---- | ---- | | HYDRAULIC: BAT644M (1) |



COPPER HYLUG™ & HYLINK™ CONNECTORS
TYPES YA, YA-L, YAB, YS, YS-L, YST, YS-T, YSP-T

| - CATALOG NO. - | | STANDARD WIRE SIZE | EXPANDED WIRE RANGE |
|-----------------|----------|--------------------|---------------------|
| TERMINAL* | SPLICE** | | |
| YA6C- | YS6C- | #6 AWG | #6 AWG |
| YA5C- | YS5C- | #5 AWG | #5-#6 AWG |
| YA4C- | YS4C- | #4 AWG | #4-#6 AWG |
| YA3C- | YS3C- | #3 AWG | #1-#6 AWG |
| YA2C- | YS2C- | #2 AWG | #2-#1 AWG |
| YA1C- | YS1C- | #1 AWG | #1-#6 AWG |
| YA25- | YS25- | 1/0 AWG | 1/0-#6 AWG |
| YA26- | YS26- | 2/0 AWG | 2/0-#4 AWG |
| YA27- | YS27- | 3/0 AWG | 3/0-#2 AWG |
| YA28- | YS28- | 4/0 AWG | 4/0-#1 AWG |
| YA29- | YS29- | 250 kcmil | 250 kcmil-1/0 AWG |
| YA30- | YS30- | 300 kcmil | 300 kcmil-2/0 AWG |
| YA31- | YS31- | 350 kcmil | 350 kcmil-3/0 AWG |
| YA32- | YS32- | 400 kcmil | 400 kcmil-4/0 AWG |
| YA34- | YS34- | 500 kcmil | 500 kcmil-4/0 AWG |
| YA36- | YS36- | 600 kcmil | 600-250 kcmil |
| YA39- | YS39- | 750 kcmil | 750-400 kcmil |
| YA40- | YS40- | 800 kcmil | 800-500 kcmil |
| YA44- | YS44- | 1000 kcmil | 1000-750 kcmil |

* 1 CRIMP
** 1 CRIMP PER SIDE

REF: SD213749

- NOTES:
- MATERIAL: HIGH CONDUCTIVITY COPPER.
 - FINISH: ELECTRO-TIN PLATED.
 - CATALOG # PT6515 ADAPTOR IS REQUIRED TO USE "U" DIES IN Y45 SERIES TOOLS.
 - CATALOG # PUADP-1 ADAPTOR IS REQUIRED TO USE "U" DIES IN Y46 SERIES TOOLS.
 - DIMENSIONS IN BRACKETS [] ARE IN MILLIMETERS ROUNDED OFF TO THE NEAREST MILLIMETER, UNLESS OTHERWISE NOTED, AND ARE FOR REFERENCE ONLY.
 - CONNECTORS ARE UL LISTED.
 - CONNECTORS ARE CSA CERTIFIED.
 - "X", "W-RT", "W-VT", "U", & "L" DIE SETS ARE COLOR CODED. "C" DIES ARE NOT COLOR CODED.
 - THE FOLLOWING CONNECTORS ARE RANGE TAKING WHEN CRIMPED ONTO COPPER CONDUCTOR USING THE Y644M FAMILY OF TOOLS.
 - 4 PT. STYLE LOADING REFERS TO THE FOLLOWING DIELESS TOOLS: (PAT81KFT18V, Y81KFT, Y81KFTMBH, PAT4PC83418V, Y4PC834, Y4PC834MBH)
 - REFER TO TABLE FOR CONNECTOR RANGE DATA FOR 4 PT. TOOL.

| | | |
|--|-----------------------------|--------------------|
| TO ORDER BURNDY® PRODUCTS CALL UNITED STATES 1-800-346-4175 (LONDONDERRY, NH) CANADA: 1-800-361-6975 (QUEBEC) 1-800-387-6487 (ALL OTHER PROVINCES) FOR PRODUCT INFO: http://www.burndy.com | HYLUG™ COPPER OEM EQUIPMENT | |
| | ITEM NO: | N/A |
| | CAT. NO: | YA-L-NT-E (TABLE) |
| | DRAWN BY: | D.BOSTVERT 4/26/02 |
| | CHECKER: | P.LAPONIUS 4/26/02 |
| DSN APPVL: | G.ZAHLMAN 4/25/02 | |
| MFG APPVL: | N/A -- | |
| QA APPVL: | C.ACKERMAN 4/25/02 | |
| MKT APPVL: | R.ROBICHEAU 4/25/02 | |
| PROD FAM: | CM&R COMPRESSION | |
| PROJECT #: | --- | |
| DOCUMENT TYPE: | Sales | |
| REL LEVEL: | Released | |
| SCALE: | 1:000 | |
| DRAWING NO: | 10001062 | |
| REV: | M | |

REV: PE0200

DRAWING NO.
10001062

7

6

5

4

3

2

1

| REV | DATE | DESCRIPTION | ECO | BY | C'H'K. |
|-----|------------------------|-----------------------|-------|----|--------|
| M | 10/31/2011 00:00:00 AM | UPDATED AS PER MARKUP | 25813 | AD | MA |

| COPPER CONDUCTOR (CODE & COMPACT) | | | | | | | |
|-----------------------------------|----------------|-----------------|--------|-----------|-------------|--------|-----------|
| CONDUCTOR | | STANDARD BARREL | | | LONG BARREL | | |
| WIRE SIZE | EXPANDED RANGE | TERMINAL | SPLICE | # CRIMPS* | TERMINAL | SPLICE | # CRIMPS* |
| #8 AWG | #8 AWG | YA8CL- | YS8CL- | 1 | YA8C- | YS8C- | 1 |
| #6 AWG | #6 AWG | YA6CL- | YS6CL- | 1 | YA6C- | YS6C- | 1 |
| #4 AWG | #6-#4 | YA4CL- | YS4CL- | 1 | YA4C- | YS4C- | 1 |
| #2 AWG | #6-#2 | YA2CL- | YS2CL- | 1 | YA2C- | YS2C- | 2 |
| #1 AWG | #6-#1 | YA1CL- | YS1CL- | 1 | YA1C- | YS1C- | 2 |
| 1/0 AWG | #6-1/0 | YA25L- | YS25L- | 1 | YA25- | YS25- | 2 |
| 2/0 AWG | #4-2/0 | YA26L- | YS26L- | 1 | YA26- | YS26- | 2 |
| 3/0 AWG | #2-3/0 | YA27L- | YS27L- | 2 | YA27- | YS27- | 2 |
| 4/0 AWG | #1-4/0 | YA28L- | YS28L- | 2 | YA28- | YS28- | 2 |
| 250 KCMIL | 1/0-250 | YA29L- | YS29L- | 2 | YA29- | YS29- | 2 |
| 300 KCMIL | 2/0-300 | YA30L- | YS30L- | 2 | YA30- | YS30- | 3 |
| 350 KCMIL | 3/0-350 | YA31L- | YS31L- | 2 | YA31- | YS31- | 3 |
| 400 KCMIL | 4/0-400 | YA32L- | YS32L- | 2 | YA32- | YS32- | 3 |
| 500 KCMIL | 4/0-500 | YA34L- | YS34L- | 2 | YA34- | YS34- | 4 |
| 600 KCMIL | 250-600 | YA36L- | YS36L- | 2 | YA36- | YS36- | 4 |
| 700 KCMIL | 350-700 | YA38L- | YS38L- | 3 | YA38- | YS38- | 4 |
| 750 KCMIL | 400-750 | YA39L- | YS39L- | 3 | YA39- | YS39- | 4 |
| 800 KCMIL | 500-800 | YA40L- | YS40L- | 3 | YA40- | YS40- | 4 |
| 1000 KCMIL | 750-1000 | YA44L- | YS44L- | 3 | YA44- | YS44- | 4 |

* SAME NUMBER OF RECOMMENDED CRIMPS FOR BOTH STANDARD AND EXPANDED WIRE RANGES

A

REV: PE0200

8

7

6

5

4

3

2

1

| | | | |
|---|--|--------------------------------|--|
| TO ORDER BURNDY® PRODUCTS CALL | | HYLUG™ COPPER OEM EQUIPMENT | |
| UNITED STATES | | ITEM NO: N/A | |
| 1-800-346-4175 (LONDONDERRY, NH) | | CAT. NO: YA-L-NT-E (TABLE) | |
| CANADA: | | DRAWN BY: D.BOSTVERT 4/26/02 | |
| 1-800-361-6975 (QUEBEC) | | CHECKER: P.LAPONIUS 4/26/02 | |
| 1-800-387-6487 (ALL OTHER PROVINCES) | | DSN APPVL: G.ZAHLMAN 4/25/02 | |
| FOR PRODUCT INFO: http://www.burndy.com | | MFG APPVL: N/A -- | |
| | | QA APPVL: C.ACKERMAN 4/25/02 | |
| | | MKT APPVL: R.ROBICHEAU 4/25/02 | |
| | | SCALE: 1:000 | |
| | | PROJ #: -- | |
| | | SIZE: D | |
| | | DRAWING NO: 10001062 | |
| | | REV: M | |
| | | SHEET 4 OF 4 | |

A