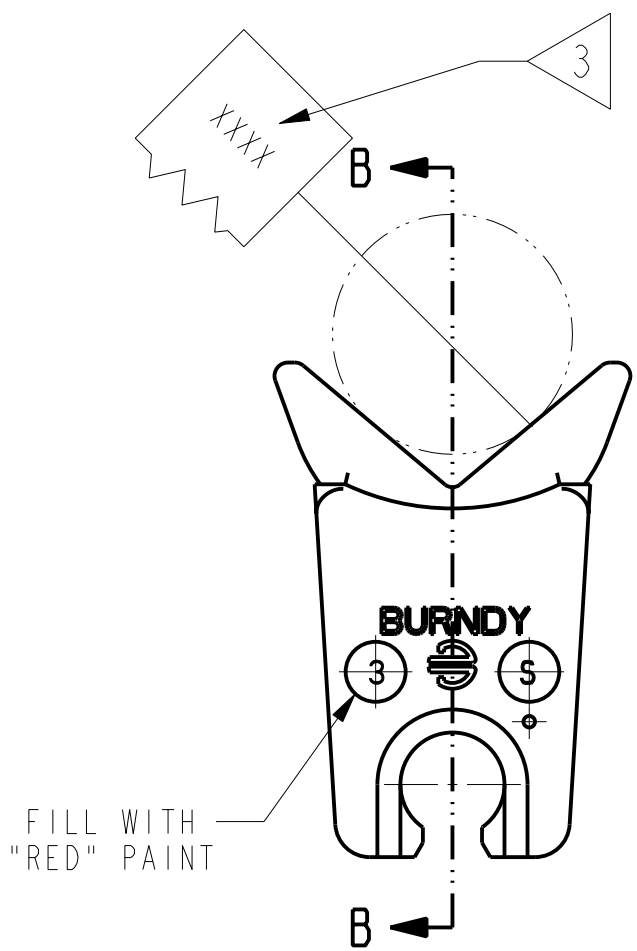
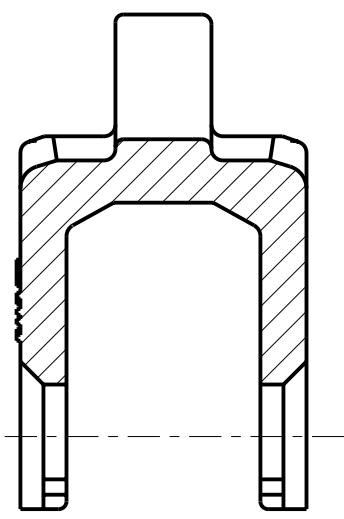


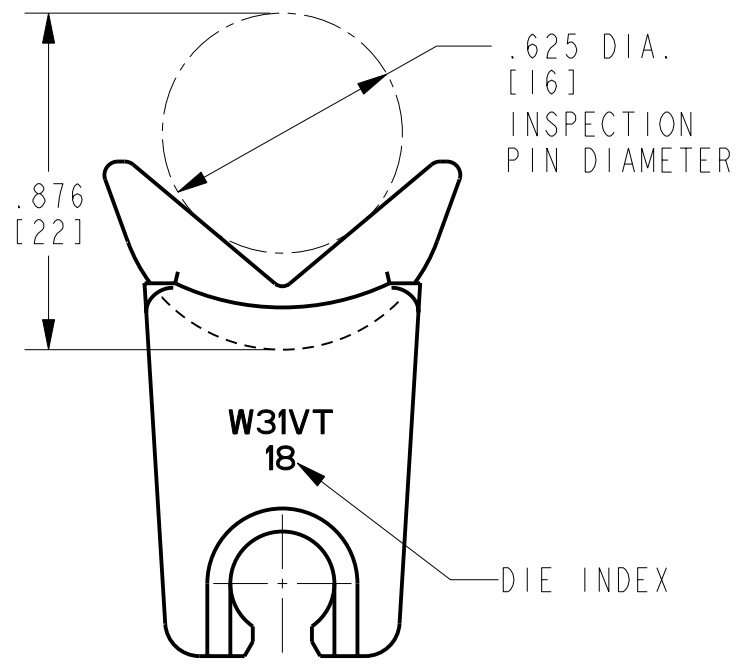
REV.	DATE	DESCRIPTION	ECO	BY	C'H'K.
A	6/12/2009 12:00:00 AM	NEW SALES DRAWING RELEASE	18247	MR	JG



FILL WITH "RED" PAINT



SECTION B-B



NOTES:

- DIMENSIONS IN BRACKETS [] ARE IN MILLIMETERS ROUNDED OFF TO THE NEAREST MILLIMETER, UNLESS OTHERWISE NOTED, AND ARE FOR REFERENCE ONLY.
- MATERIAL: STAINLESS STEEL
- INDEX NUMBER TO BE REVERSED STAMPED OR ENGRAVED IN THE CRIMPING GROOVE. LOCATE THE BURNDY SYMBOL ON THE OPPOSITE SIDE OF THE CRIMPING GROOVE.
- CATALOG NUMBER CONSIST OF TWO DIE HALVES.

TO ORDER BURNDY® PRODUCTS CALL
 UNITED STATES:
 1-800-346-4175 (LONDONDERRY, NH)
 CANADA:
 1-800-361-6975 (QUEBEC)
 1-800-387-6487 (ALL OTHER PROVINCES)
 FOR PRODUCT INFO: <http://www.burndy.com>

W-DIES		SCALE: 2:1
ITEM NO: --		
CAT. NO: W31VT		
DRAWN BY: M RAJASEKAR	6/12/2009	
CHECKER: R RICK	7/13/2009	
DSN APPVL: R RICK	7/13/2009	
MFG APPVL: S HOPPS	8/11/2009	
QA APPVL: A CHARLES	7/15/2009	
MKT APPVL: P ROBERT	7/09/2009	
PROD FAM: TOOLS_MECHANICAL		
PROJECT #: --	SIZE	DRAWING NO
DOCUMENT TYPE: Sales	B	10102376
REL LEVEL: Released		SHEET 1 OF 1

REV: PE0200