

### SMALL HYDENT TABLE OF CONTENTS

<b>General Information</b> .....	<b>B-2, B-3</b>	<b>Types TP-Z &amp; BA-EZ</b> .....	<b>B-33</b>
<b>MIL. SPEC. Equivalent Tables</b> .....	<b>B-4</b>	<b>Types TP-LF &amp; BA-EL</b> .....	<b>B-34</b>
Types <b>T &amp; YAD</b> .....	<b>B-5</b>	Type <b>Q-F</b> .....	<b>B-35</b>
Types <b>TP &amp; BA</b> .....	<b>B-6</b>	Type <b>QP-F</b> .....	<b>B-35</b>
Types <b>TN &amp; YAES</b> .....	<b>B-7, B-8</b>	Type <b>QN-F</b> .....	<b>B-36</b>
Type <b>YAE-G BOX</b> .....	<b>B-9</b>	Type <b>Q-M</b> .....	<b>B-36</b>
Types <b>YAE-N BOX &amp; YAE-N</b> .....	<b>B-10</b>	Type <b>QP-M</b> .....	<b>B-37</b>
Type <b>YAES-K</b> .....	<b>B-11, B-12</b>	Type <b>QN-M</b> .....	<b>B-37</b>
Types <b>YAV BOX &amp; YAV</b> .....	<b>B-13, B-14</b>	Types <b>PGP &amp; PGN</b> .....	<b>B-38</b>
Types <b>YAV-L BOX &amp; YAV-L</b> .....	<b>B-15, B-16</b>	Types <b>FQN-F &amp; FQN-M</b> .....	<b>B-39</b>
Types <b>YAV-H BOX &amp; YAV-H</b> .....	<b>B-17</b>	Type <b>FL</b> .....	<b>B-40</b>
Type <b>YBM</b> .....	<b>B-18</b>	<b>Uninsulated Splices</b> .....	<b>B-41</b>
Types <b>YAEV &amp; YAEV-L</b> .....	<b>B-19, B-20</b>	Types <b>YSV, YSV-H &amp; YSV-L</b> .....	<b>B-41</b>
Type <b>YAEV-H</b> .....	<b>B-21, B-22</b>	Type <b>YSV-L</b> .....	<b>B-42</b>
Types <b>YAV-R &amp; YAV-RS</b> .....	<b>B-23</b>	Type <b>YSM</b> .....	<b>B-43</b>
Type <b>YAEV-RS</b> .....	<b>B-24</b>	Types <b>YSES-K</b> .....	<b>B-44</b>
Type <b>YAEV-RH</b> .....	<b>B-25</b>	Types <b>SP &amp; BS</b> .....	<b>B-45</b>
Types <b>T-F &amp; YAD-F</b> .....	<b>B-26</b>	<b>Insulated Splices</b> .....	<b>B-46</b>
Types <b>YAV-T-F BOX &amp; YAV-T-F</b> .....	<b>B-27</b>	Types <b>SN, YSE-HN</b> .....	<b>B-46</b>
Types <b>YAV-H-F BOX, YAV-H-F</b> & <b>YAV-Z</b> .....	<b>B-28</b>	Types <b>SNM, YSE BOX, YSES,</b> <b>YSE-H BOX, YSE &amp; YSE-H</b> .....	<b>B-47</b>
Types <b>TN-F &amp; YAES-F</b> .....	<b>B-29</b>	Types <b>YSV &amp; YRV-L</b> .....	<b>B-48</b>
Types <b>YAE-N-F BOX &amp; YAE-N-F</b> .....	<b>B-30</b>	Types <b>YQE &amp; RK</b> .....	<b>B-49</b>
Types <b>TP-F &amp; BA-EF</b> .....	<b>B-31</b>	Type <b>TS</b> .....	<b>B-50</b>
Types <b>YAE-Z BOX &amp; YAE-Z</b> .....	<b>B-32</b>		

### Performance

The terminals and splices in this catalog are approved, per MIL-T-7928 and/or UL 486, where indicated. Table 1 shows the performance requirements for terminals used in military and commercial equipment. The voltage drops listed are maximum allowable values taken at currents well above rated current for the wires. Tensile values assure that the wires will not become separated from the terminals under reasonably expected stresses. UL tensile values are chosen to reflect the severest expected duty. MIL Specification tensile values apply only to crimp terminations and reflect minimum values that are obtained in good crimp joints. Actual performance of Burndy terminals exceeds the requirements of Table 1. Typical values are shown in Figs. 1-5. For High Temperature application BURNDY YAV series with nickel plating "-NK" suffix provide for continuous operation to 650° F and 750° F intermittent service.

Table 1

PERFORMANCE REQUIREMENTS - TERMINALS FOR COPPER WIRE					
WIRE SIZE	PER MIL-T-7928			PER UL 486	
	TEST CURRENT (Amps)	MAX. VOLTAGE DROP (Mv.)	MIN. TENSILE STRENGTH (Lbs.)	MIN. TENSILE STRENGTH (Lbs.)	TEST CURRENT FOR MAX. 50° C RISE (Amps)
26	3	8	7	—	—
24	4.5	8	10	—	—
22	9	7	15	8	—
20	11	6	19	13	—
18	16	5	38	20	—
16	22	7	50	30	—
14	32	6	70	50	15
12	41	5	110	70	20
10	55	5	150	80	30
8	73	5	225	90	50
6	101	5	300	100	65
4	135	5	400	140	85
2	181	5	550	180	115
1	211	5	650	200	130
0	245	5	700	250	150
00	283	5	750	300	175
000	320	5	825	350	200
0000	380	5	875	450	230

Fig 1. Tensile strength of YAD HYLUG™ after axial rotation stresses.

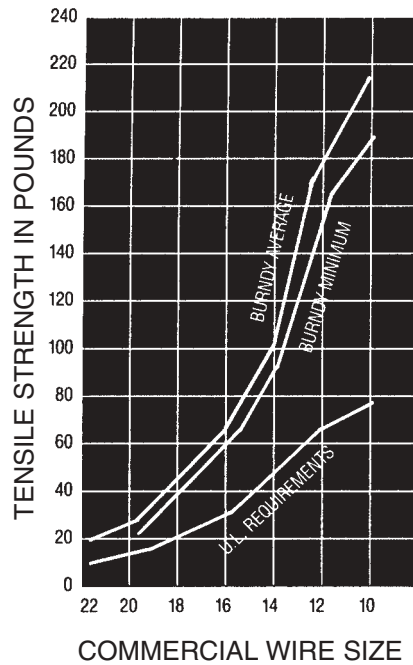
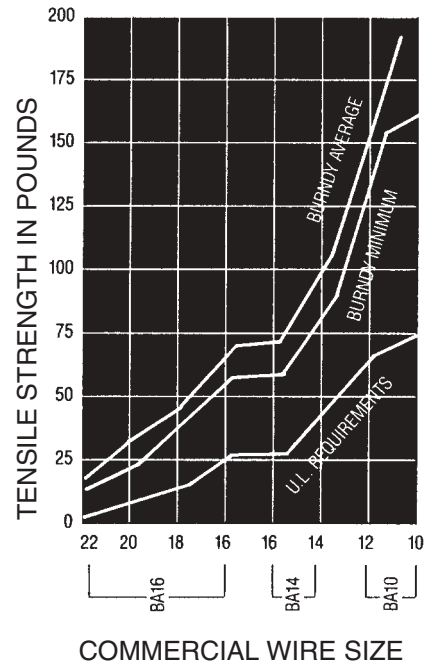
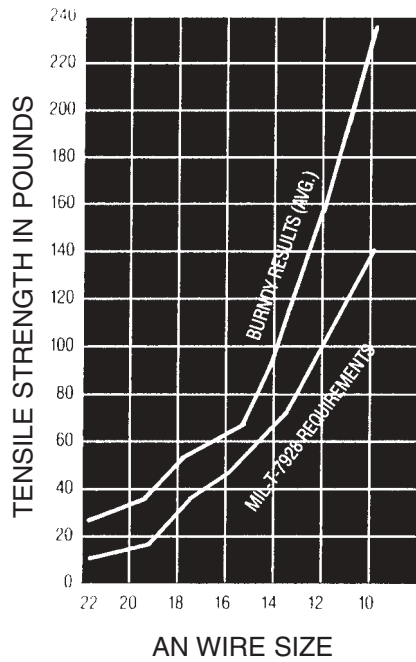


Fig 2. Tensile strength of BA VINYLUG™ after axial rotation stresses.

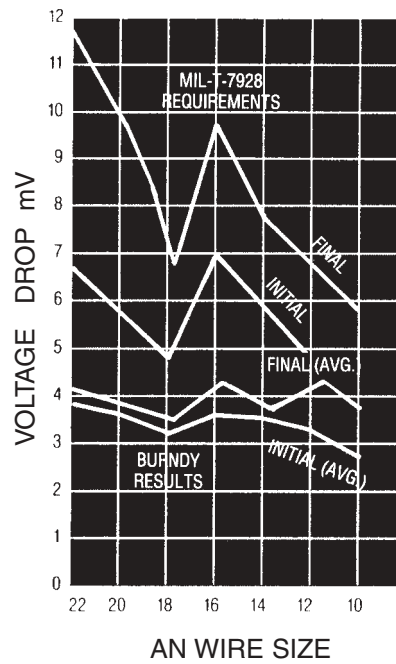


## GENERAL INFORMATION (Continued)

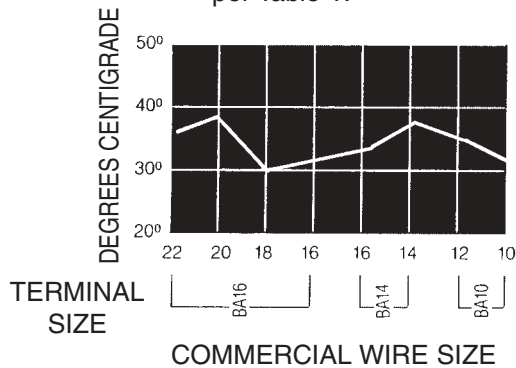
**Fig 3.** Tensile strength of YAES INSULUG™ after vibration.



**Fig 5.** Voltage drops of YAES at currents per Table 1 after vibration.



**Fig 4.** Temperature rise of BA VINYLUG™ at currents per Table 1.





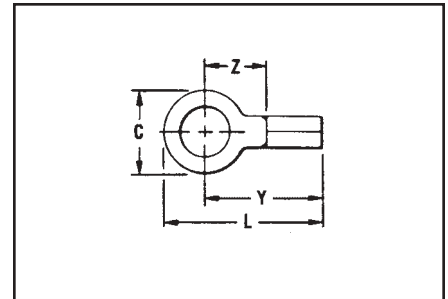
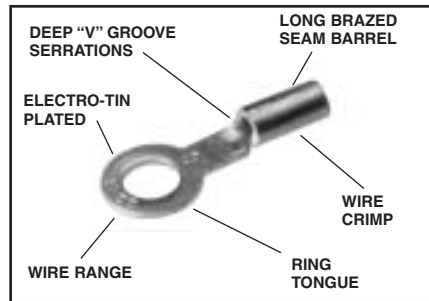
### TYPES T AND YAD

#### HYLUG™

#### UNINSULATED COMPRESSION TERMINAL, RING TONGUE

The Type T uninsulated terminals are constructed of pure electrolytic copper. Designed with a long brazed seam barrel, standard neck, deep V groove inner serrations and electro-tin plated. The terminals are ideal for control wiring and other standard duty applications.

The ring tongue provides a secure termination under the screw head that cannot be removed without the complete removal of the screw. Two or more terminals can easily be stacked on a common stud.



B-5

#### Features and Benefits

- Constructed of pure electrolytic copper.
  - ◇ Provides maximum conductivity, low resistance and ductility for excellent crimp forming properties.
- Long brazed seam barrel and deep V groove inner serrations.
  - ◇ Provides optimum conductivity reliability and holding power after crimping.
- Electro-tin plated.
  - ◇ Provides durable long-lasting corrosion resistance.
- Wire range is clearly marked on terminal.
  - ◇ Provides easy identification.
- Inspection hole.
  - ◇ Provides an easy visual check of wire insertion.
- Long neck terminal.
  - ◇ Permits easy bending and stacking of several terminals on a common stud.

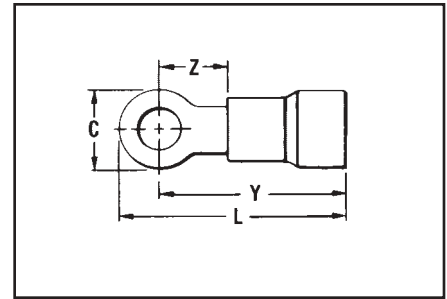
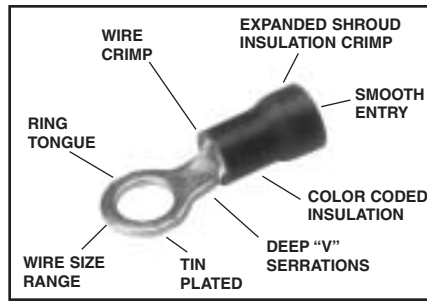
CATALOG NUMBER	WIRE RANGE	STUD SIZE	DIMENSIONS				BULK CATALOG NUMBER*	INSTALLATION TOOLING	TAPE MOUNTED CATALOG NO. 2000/Reel	INSTALLATION TOOLING	WIRE STRIP LENGTH
			C	L MAX.	Y MAX.	Z MIN.					
T18-4	22-18	3, 4	.25	.65	.53	.24	YAD18-4	NON-RATCHET: Y10D, Y10-22 RATCHET: MR8G98, Y8MRB-1, MR20	YAD18-4M	TFM WITH DFM6D1 DIE	9/32"
T18-6		4-6	.25	.65	.53	.24	YAD18-6M				
T18-8		6-8	.31	.77	.61	.33	YAD18-8M				
T18-10		8-10	.31	.77	.61	.33	YAD18-10M				
T18-14		1/4	.45	.96	.73	.44	YAD18-14M				
T18-516		5/16	.45	.96	.73	.44	YAD18-516M				
T18-38		3/8	.53	1.05	.78	.49	YAD18-38M				
T14-4	20-14	3, 4	.25	.67	.55	.26	YAD14-4	NON-RATCHET: Y10D, Y10-22 RATCHET: MR8G98, Y8MRB-1, MR20	YAD14-4M	TFM WITH DFM5D1 DIE	9/32"
T14-6		4-6	.25	.67	.55	.26	YAD14-6M				
T14-8		6-8	.31	.77	.61	.33	YAD14-8M				
T14-10		8-10	.31	.77	.61	.33	YAD14-10M				
T14-14		1/4	.45	.96	.73	.44	YAD14-14M				
T14-516		5/16	.45	.96	.73	.44	YAD14-516M				
T14-38		3/8	.53	1.05	.78	.49	YAD14-38M				
T10-6	12-10*	4-6	.37	.83	.64	.29	YAD10-6	NON-RATCHET: Y10D, Y10-22 RATCHET: MR8G98, Y8MRB-1, MR20	•YAD10-6M	TFM WITH DFM4D1 DIE	11/32"
T10-8		6-8	.37	.83	.64	.29	YAD10-8		•YAD10-8M		
T10-10		8-10	.37	.83	.64	.29	YAD10-10		•YAD10-10M		
T10-14		1/4	.46	.97	.74	.39	YAD10-14		•YAD10-14M		
T10-516		5/16	.53	1.02	.76	.41	YAD10-516		•YAD10-516M		
T10-38		3/8	.58	1.08	.79	.44	YAD10-38		•YAD10-38M		

\* NOTE: UL Listed for 14-10 when installed with MR8G98 and Y8MRB-1 tools only.  
• 1000 pcs/reel.

### TYPES TP AND BA

#### VINYLU<sup>TM</sup>

TERMINAL -  
POLYVINYLCHLORIDE  
INSULATED, RING TONGUE  
600 VOLTS MAX. 105° C MAX.



#### Features and Benefits

- Expanded insulation support accepts standard and large wire diameters.
  - ◇ Lowers inventory requirements, permits greater flexibility and provides insulation support.
- Funnel entry.
  - ◇ Easy wire insertion.
- Manufactured of pure electrolytic copper.
  - ◇ Provides maximum conductivity, low resistance and ductility for excellent crimp forming properties.
- Deep V groove serrations in the inner barrel.
  - ◇ Provides added holding strength and better conductivity.
- Electro-tin plated.
  - ◇ Provides durable long-lasting corrosion resistance.



CATALOG NUMBER	WIRE RANGE	STUD SIZE	DIMENSIONS				BULK CATALOG NUMBER	INSTALLATION TOOLING	TAPE MOUNTED CATALOG NO. 2000/Reel	INSTALLATION TOOLING	WIRE STRIP LENGTH
			C	L	Y	Z					
TP16-4	22-16 MAX. INSUL. DIA. ACCOM.: .145 COLOR CODE: RED	3-4	.22	.71	.61	.17	BA16E4	PLIER TYPE: Y10-22, Y10D OR RATCHET TOOL MR8-89-1 MR8-G96 MR15	BA16E4M	TFM WITH DFM3D-1 DIE	13/64"
TP16-6		4-6	.25	.74	.62	.18	BA16E6		BA16E6M		
TP16-8		6-8	.31	.85	.70	.26	BA16E8		BA16E8M		
TP16-10		8-10	.31	.85	.70	.26	BA16E10		BA16E10M		
TP16-14		12,1/4	.40	.99	.79	.36	BA16E14		BA16E14M		
TP16-38		3/8	.53	1.15	.88	.45	BA16E38		BA16E38M		
TP14-4	16-14 MAX. INSUL. DIA. ACCOM.: .180 COLOR CODE: BLUE	3-4	.22	.71	.61	.17	BA14E4	PLIER TYPE: Y10-22, Y10D OR RATCHET TOOL MR8-89-1 MR8-G96 MR15	BA14E4M	TFM WITH DFM2D-1 DIE	13/64"
TP14-6		4-6	.25	.74	.62	.18	BA14E6		BA14E6M		
TP14-8		6-8	.31	.85	.70	.26	BA14E8		BA14E8M		
TP14-10		8-10	.31	.85	.70	.26	BA14E10		BA14E10M		
TP14-14		12,1/4	.40	.99	.79	.36	BA14E14		BA14E14M		
TP14-516		5/16	.53	1.15	.88	.45	BA14E516		BA14E516M		
TP14-38	3/8	.53	1.15	.88	.45	BA14E38	BA14E38M				
TP10-6	12-10 MAX. INSUL. DIA. ACCOM.: .260 COLOR CODE: YELLOW	4-6	.31	.91	.75	.20	BA10E6	PLIER TYPE: Y10-22, Y10D OR RATCHET: MR8-89-1, MR15	* BA10E6M	TFM WITH DFM1D5 DIE	19/64"
TP10-8		6-8	.36	1.00	.81	.26	BA10E8		* BA10E8M		
TP10-10		8-10	.36	1.00	.81	.26	BA10E10		* BA10E10M		
TP10-14		12,1/4	.53	1.22	.95	.40	BA10E14		* BA10E14M		
TP10-38		3/8	.53	1.27	1.00	.45	BA10E38		* BA10E38M		

\* 1000/Reel

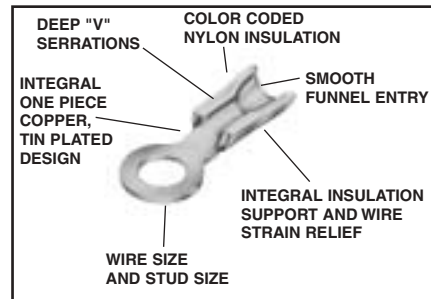
## TYPES TN AND YAES

### INSULUG™

TERMINAL -  
NYLON INSULATED,  
RING-TONGUE

300 VOLTS MAX. 105°C MAX.

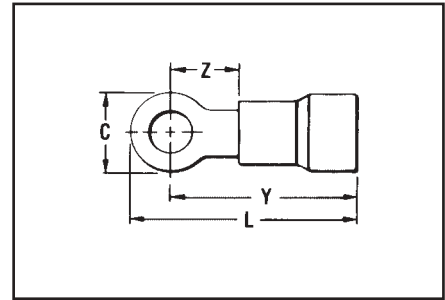
INSULUG™ type TN Nylon-insulated terminals are designed for heavy duty industrial, utility and military power and control-circuit applications for wire sizes 26 AWG through 10 AWG. They offer high dielectric strength and stability in oily conditions and meet military CLASS 1 and CLASS 2 requirements per MS25036 and the requirements of military specifications MIL-T-7928 (ASG).



### Features and Benefits

- An integral one-piece copper barrel /insulation grip and wire strain relief design.
  - ◇ Provides improved physical strength characteristics over a multi-piece design.
- Manufactured of pure electrolytic copper.
  - ◇ Provides maximum conductivity, low resistance and ductility for excellent crimp forming properties.
- Brazed seam.
  - ◇ Provides a stronger barrel design to minimize any possible splitting and eliminates folding.
- Deep inner barrel serrations.
  - ◇ Provides excellent electrical conductivity and pullout strength values.
- Smooth funnel entry.
  - ◇ Easy wire insertion.
- The insulation is locked in place.
  - ◇ Will not twist off, thereby maintains proper dielectric values.
- Electro-tin plated.
  - ◇ Provides durable long-lasting resistance to corrosion.
- Color-coded and clearly marked.
  - ◇ Provides quick, easy wire size identification.
- Ring Tongue.
  - ◇ Provides a secure termination under the screw head that can not be removed without complete removal of the screw.
- Two or more terminals may be stacked on a common stud easily.
  - ◇ Provides flexibility and versatility.

## TYPES TN AND YAES (Continued)



B-8

CATALOG NUMBER	WIRE RANGE	STUD SIZE	MIL. STD. MS25036-	DIMENSIONS				BULK CAT. NO.	INSTALLATION TOOLING	WIRE STRIP LENGTH
				C	LMAX	YMAX	ZMAX			
TN18-4	22-18 MAX. INSUL. DIA. ACCOM: .120 COLOR CODE: RED	3-4	-148	.23	.76	.64	.20	YAES18N48	NON-RATCHET Y10D Y1022	7/32"
TN18-6		4-6	-102	.25	.87	.74	.29	YAES18N1		
TN18-8		6-8	-149	.31	.91	.76	.29	YAES18N49		
TN18-10		8-10	-103	.31	.91	.76	.29	YAES18N3		
TN18-14		12, 1/4	-150	.46	1.09	.87	.41	YAES18N50		
TN18-516		5/16	-104	.46	1.09	.87	.41	YAES18N4		
TN18-38		3/8	-105	.53	1.17	.91	.45	YAES18N5		
TN14-4	16-14 MAX. INSUL. DIA. ACCOM: .153 COLOR CODE BLUE	3-4	-152	.25	.79	.67	.24	YAE14N52	RATCHET: MR8-83	7/32"
TN14-6		4-6	-106	.25	.79	.67	.24	YAES14N6		
TN14-8		6-8	-153	.31	.89	.74	.31	YAES14N53		
TN14-10		8-10	-108	.31	.89	.74	.31	YAES14N8		
TN14-14		12, 1/4	-154	.45	1.08	.86	.43	YAES14N54		
TN14-516		5/16	-109	.45	1.08	.86	.43	YAES14N9		
TN14-38		3/8	-110	.53	1.16	.90	.47	YAES14N10		
TN10-6	12-10 MAX. INSUL. DIA. ACCOM: .210 COLOR CODE: YELLOW	4-6	-111	.37	1.12	.94	.26	YAES10N11	RATCHET: MR8-83	11/32"
TN10-8		6-8	-156	.37	1.12	.94	.26	YAES10N56		
TN10-10		8-10	-112	.37	1.12	.94	.26	YAES10N12		
TN10-14		12, 1/4	-157	.53	1.32	1.06	.37	YAES10N57		
TN10-516		5/16	-113	.53	1.32	1.06	.37	YAES10N13		
TN10-38		3/8	-114	.58	1.34	1.05	.40	YAES10N14		

▲ Class 1 and class 2. Meets the requirement of military specification MIL-T-7928 (ASG)

\* Use on #10 or #12 Str. Cu only.

\*\* Meets requirements for Class 2 installation. For use as a Class 1 connector, use tool conforming to MS25037, Class 1.



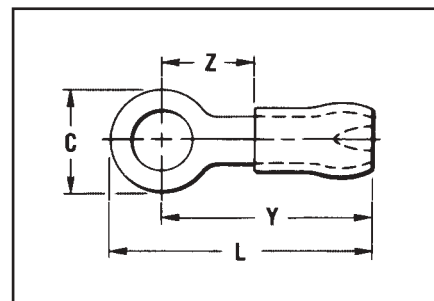
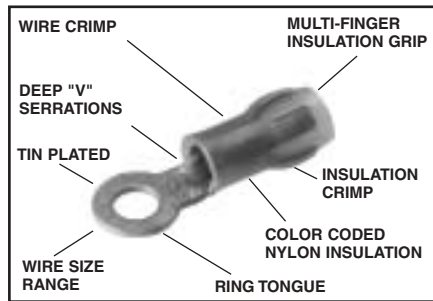
### TYPE YAE-G BOX

#### INSULUG™

TERMINAL -  
 NYLON INSULATED,  
 RING-TONGUE  
 MULTI-FINGER  
 INSULATION GRIP

300 VOLTS MAX. 105° C MAX.

INSULUG™ Type YAE-N nylon insulated terminals are designed with a multi-finger insulation grip for paper, EPR and other elastic or hard to grip insulations. The metal fingers firmly grip the insulation providing superior holding characteristics, cable support and strain relief. Type YAE-N terminals are rated 105°C and meet military standard MS25036 class 2 and MIL-T-7928 (ASG) requirements.



B-9

#### Features and Benefits

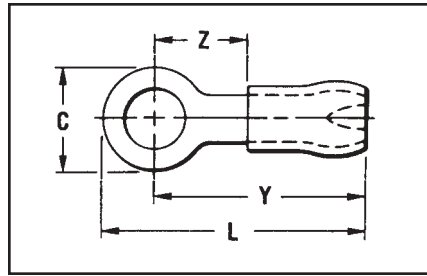
- Multi-finger insulation grip.
  - ◇ Provides superior insulation holding characteristics, especially on EPR and other elastic-type insulations.
- Brazed seam.
  - ◇ Provides stronger more durable termination.
- Manufactured of pure electrolytic copper.
  - ◇ Provides maximum conductivity, low resistance and ductility for excellent crimp forming properties.
- Deep V groove, inner barrel serrations.
  - ◇ Provide optimum conductivity, reliability, and holding power.
- Smooth funnel entry.
  - ◇ Easy wire insertion.



CATALOG NUMBER	WIRE RANGE	STUD SIZE	MIL. STD.** MS25036	DIMENSIONS				BULK CATALOG NUMBER	INSTALLATION TOOLING	TAPE MOUNTED CATALOG NO. 2000/Reel	INSTALLATION TOOLING	WIRE STRIP LENGTH
				C	L MAX	Y MAX	Z MAX					
YAE22G18 BOX•	26-20 Max. Insul. Dia. Accom.: .098 Color Code: Amber	1.2	-148	.15	.70	.62	.22	YAE22G18•	M8ND with N14HET-25V1 die	YAE22G18M•	TFM with DFM11D1 die	5/32"
YAE22G12 BOX•		1.2	-	.25	.75	.62	.22	YAE22G12•		YAE22G12M•		
YAE22G16 BOX•		3.4	-144	.18	.75	.62	.22	YAE22G16•		YAE22G16M•		
YAE22G13 BOX•		4-6	-145	.25	.75	.62	.22	YAE22G13•		YAE22G13M•		
YAE22G14 BOX•		6-8	-146	.32	.83	.67	.27	YAE22G14•		YAE22G14M•		
YAE22G15 BOX•		8-10	-147	.32	.83	.67	.27	YAE22G15•		YAE22G15M•		

• Not UL recognized  
 \* 1000/Reel  
 \*\* Class 2

## TYPES YAE-N BOX AND YAE (Continued)



### INSULUG™

B-10

CATALOG NUMBER	WIRE RANGE	STUD SIZE	MIL STD.** MS25036	DIMENSIONS				BULK CATALOG NUMBER	INSTALLATION TOOLING	TAPE MOUNTED CATALOG NO. 2000/REEL	INSTALLATION TOOLING	WIRE STRIP LENGTH
				C	L MAX.	Y MAX.	Z MIN.					
YAE18N29 BOX	22-16 † Max. Insul. Dia. Accom.: .125 Color Code: Red	1-2	—	.14	.75	.68	.19	YAE18N29	MR8-33T-1 (no extra dies required) M8ND with one of following dies: N14HET-25V1 N10ET-9 N14HET-15  or Y10D Y10-22	YAE18N29M	TFM with DFM10D1 die	3/16"
YAE18N27 BOX		2	—	.19	.77	.66	.19	YAE18N27		YAE18N27M		
YAE18N7 BOX		4	—	.25	.80	.68	.19	YAE18-N7		YAE18-N7M		
YAE18N17 BOX		4	-148	.25	.80	.68	.19	YAE18N17		YAE18N17M		
YAE18N26 BOX		4	—	.23	.78	.68	.19	YAE18N26		YAE18N26M		
YAE18N21 BOX		4-6	-102	.25	.89	.77	.28	YAE18N21		YAE18N21M		
YAE18N25 BOX		4-6	—	.22	.79	.68	.19	YAE18N25		YAE18N25M		
YAE18G43 BOX		4-6	—	.25	.90	.68	.19	YAE18G43		YAE18G43M		
YAE18N24 BOX		6-8	—	.28	.92	.77	.28	YAE18N24		YAE18N24M		
YAE18N1 BOX		6-8	-149	.31	.92	.77	.28	YAE18N1		YAE18N1M		
YAE18N BOX		8-10	-103	.31	.92	.77	.28	YAE18N		YAE18NM		
YAE18N2 BOX	12, 1/4	-150	.45	1.11	.88	.40	YAE18N2	YAE18N2M				
YAE18N3 BOX	5/16	-104	.45	1.11	.88	.40	YAE18N3	YAE18N3M	TFM with DFM9D1 die	3/16"		
YAE14N43 BOX	16-14	4-6	-106	.25	.82	.69	.20	YAE14N43			YAE14N43M	
YAE14N1 BOX	6-8	-153	.31	.92	.75	.28	YAE14N1	YAE14N1M				
YAE14N BOX	8-10	-108	.31	.92	.75	.28	YAE14N	YAE14NM				
YAE14N2 BOX	Accom.: .156	1/4	-154	.45	1.11	.88	.40	YAE14N2			YAE14N2M	
YAE14N3 BOX	Color Code: Blue	5/16	-109	.45	1.11	.88	.40	YAE14N3			YAE14N3M	
YAE14N4 BOX	3/8	-110	.53	1.19	.93	.44	YAE14N4	YAE14N4M				
YAE12N7 BOX	14-12	10	—	.31	1.06	.93	.29	YAE12N7			YAE12N7M	
YAE12N9 BOX	6-8	—	.31	1.06	.90	.28	YAE12N9	YAE12N9M				
YAE12N1 BOX	6-8	—	.31	1.06	.90	.28	YAE12N1	YAE12N1M				
YAE12N BOX	Accom.: .180	8-10	—	.31	1.06	.90	.28	YAE12N			YAE12NM	
YAE12N2 BOX	Color Code: Green	1/4	—	.46	1.25	1.02	.40	YAE12N2	YAE12N2M			
YAE10N5 BOX	12-10 Max. Insul. Dia. Accom.: .209 Color Code: Yellow	4-6	-111	.38	1.15	.96	.28	YAE10N5	* YAE10N5M	TFM with DFM7D1 die	3/8"	
YAE10N11 BOX		6-8	-156	.38	1.17	.98	.30	YAE10N11	* YAE10N11M			
YAE10N BOX		8-10	-112	.38	1.15	.96	.28	YAE10N	* YAE10NM			
YAE10N3 BOX		1/4	-157	.54	1.39	1.12	.44	YAE10N3	* YAE10N3M			
YAE10N2		5/16	-113	.54	1.39	1.12	.44	YAE10N2	* YAE10N2M			
YAE10N4		3/8	-114	.54	1.39	1.12	.44	YAE10N4	* YAE10N4M			

\* 1000/Reel

\*\* Class 2

† Use Y10D or Y10-22 only when crimping #16 AWG.

## TYPE YAES-K

### INSULUG™

### NUCLEAR TERMINALS AND SPLICES

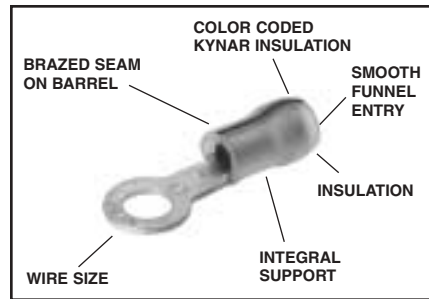
RADIATION RESISTANT  
INSULATED TERMINALS,  
RING TONGUE

POLYVINYLIDENE (PVF<sub>2</sub>)  
INSULATED

200 MEGARADS, -60°  
THROUGH 150° C, 600 VOLTS

The type YAES-K, radiation resistant KYNAR® insulated terminals are designed and have been tested to meet the requirements for class 1E critical circuits as set by the Nuclear Regulatory Commission (NRC). Additional testing for compatibility under loss of coolant accident (LOCA) conditions with cross-link polyethylene (XLP) and HYPALON® insulations was completed successfully. Compatibility with ethylene propylene rubber (EPR) insulation was determined by analysis. Each terminal is manufactured of pure electrolytic copper per QQ-C 576 and bright tin-plated per MIL-T-10727 and meets or exceeds MIL-T-7928 using stranded copper AWG wire. The KYNAR® insulation offers 200 megarad radiation resistance.

The Type YAES-K radiation resistant KYNAR® - insulated terminals are suitable for class 1E critical circuits and non-critical nuclear associated applications.



### Features and Benefits

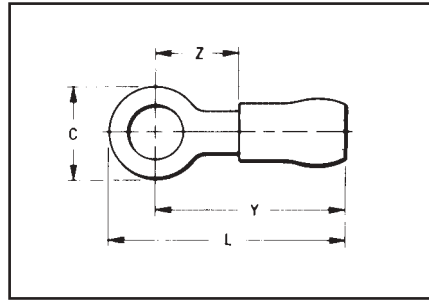
- KYNAR® insulation.
  - ◇ Provides 200 megarad radiation resistance plus successfully tested for insulation compatibility.
- An integral one-piece copper barrel/insulation grip and wire strain relief design.
  - ◇ Provides improved physical strength characteristics over a multi-piece design.
- The KYNAR® insulation is locked in place.
  - ◇ The insulation will not move or twist off, thereby maintains proper dielectric values.
- Manufactured from pure electrolytic copper.
  - ◇ Provides maximum conductivity, low resistance and ductility for excellent crimp forming properties.
- Bright tin-plated per MIL-T-10727.
  - ◇ Provides durable long-lasting resistance to corrosion.
- Deep inner barrel serrations.
  - ◇ Provides excellent electrical conductivity and tensile strength values.
- Brazed seam.
  - ◇ Provides a stronger barrel design to minimize any possible splitting and eliminates folding.
- Smooth funnel entry.
  - ◇ Easy wire insertion.
- Color coded terminals.
  - ◇ Provides easy wire size identification and inspection.
- Coded raised dots in the die area of the connection after compression.
  - ◇ Provides visual identification that the correct tool and die were used for proper installation.
- Inspection hole.
  - ◇ Permits visual check for proper wire insertion.
- Ring tongue design.
  - ◇ Provides a secure termination under screw head that cannot be removed without the complete removal of the screw.
- Multiple terminals may be stacked on a common stud easily.
  - ◇ Provides flexibility and versatility.

KYNAR - is a registered trademark of the Pennwalt Corp. for Polyvinylidene Fluoride (PVF<sub>2</sub>)

HYPALON - Is a registered trademark of the E.I. DuPont deNemours & Co., Inc.

## TYPE YAES-K (Continued)

### INSULUG™



B-12

CATALOG NUMBER	WIRE RANGE	STUD SIZE	DIMENSIONS				INSTALLATION TOOLING	WIRE STRIP LENGTH
			C	L MAX.	Y MAX.	Z MIN.		
YAES18K48	22-18 AWG str. MAX. INSUL. DIA. ACCOM.: .120 STOCK THICKNESS .032 COLOR CODE: RED	4	.23	.76	.64	.20	RATCHET TOOL: MR10G6 CRIMP MARK: (1) SMALL DOT RED GROOVE  CALIBRATION GAUGE: PG-373-1	7/32"
YAES18K-1		6	.23	.76	.64	.20		
YAES18K-2		6	.25	.87	.74	.29		
YAES18K-49		8	.31	.91	.76	.29		
YAES18K-3		10	.31	.91	.76	.29		
YAES18K-50		1/4	.46	1.09	.86	.41		
YAES18K-4		5/16	.46	1.09	.86	.41		
YAES18K-5		3/8	.53	1.18	.91	.45		
YAES14K-52	16-14 AWG str. MAX. INSUL. DIA. ACCOM.: .153 STOCK THICKNESS .032 COLOR CODE: BLUE	4	.25	.77	.65	.22	RATCHET TOOL: MR10G6 CRIMP MARK: (2) SMALL DOTS BLUE GROOVE  CALIBRATION GAUGE: PG-371-1	7/32"
YAES14K-6		6	.25	.77	.65	.22		
YAES14K-7		6	.31	.91	.76	.29		
YAES14K-53		8	.31	.91	.76	.29		
YAES14K-8		10	.31	.91	.76	.29		
YAES14K-54		1/4	.46	1.09	.86	.41		
YAES14K-9		5/16	.46	1.09	.86	.41		
YAES14K-10		3/8	.53	1.18	.91	.45		
YAES10K-11	12-10 AWG str. MAX. INSUL. DIA. ACCOM.: .210 STOCK THICKNESS .040 COLOR CODE: YELLOW	6	.38	1.12	.94	.26	RATCHET TOOL: MR10G6 CRIMP MARK: (1) LARGE DOT YELLOW GROOVE  CALIBRATION GAUGE: PG-372-1	3/8"
YAES10K-11T1		6	.31	1.09	.94	.26		
YAES10K-56		8	.38	1.12	.94	.26		
YAES10K-12		10	.38	1.12	.94	.26		
YAES10K-57		1/4	.53	1.32	1.06	.37		
YAES10K-13		5/16	.53	1.32	1.06	.37		
YAES10K-14		3/8	.58	1.34	1.05	.40		
YAES10K-58		1/2	.72	1.41	1.06	.45		

## TYPES YAV BOX AND YAV

### HYLUG™

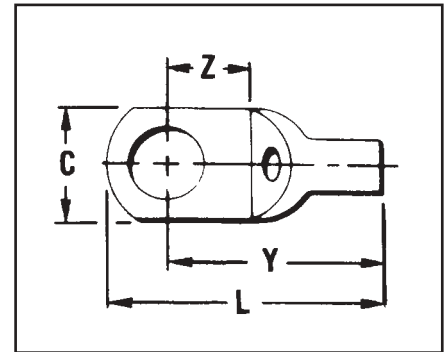
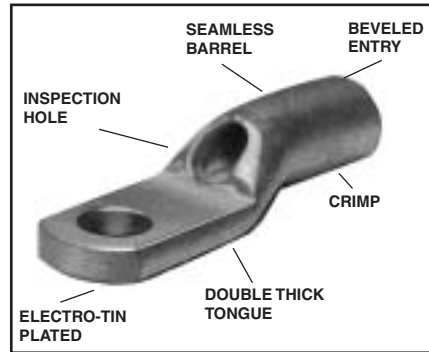
SEAMLESS UNINSULATED COMPRESSION HEAVY DUTY RING TONGUE TERMINAL

#22-10 STRANDED AND SOLID COPPER

HYLUG™ type YAV is a seamless, heavy duty uninsulated compression ring tongue terminal manufactured from pure electrolytic copper tubing and is for use on copper commercial (code) cable, type AN aircraft cable and extra flexible conductors. Because of its seamless design, the YAV HYLUG™ also accommodates solid conductors.

The seamless tubing produces a double thick tongue and a strong connector for demanding applications that require high reliability. Applications include industrials, hospitals, electric utilities, aircraft, shipboard and marine, computers, steel mills, mining equipment and other equipment that is subject to vibration or requiring dependable electrical performance.

The YAV-HYLUG™ terminals meet the requirements of MIL-T-7928 (ASG).



(See table on following page for specifications)

### Features and Benefits

- Manufactured from seamless pure electrolytic copper tubing.
  - ◇ Provides maximum conductivity, low resistance and excellent ductility for crimping.
- Seamless tubular crimp barrel design.
  - ◇ No seams to split resulting in a very high quality electrical connection. Also can be used on solid conductor.
- Double thick tongue.
  - ◇ Provides a very strong terminal tongue.
- Produced from tubular copper.
  - ◇ Extra copper material assures the compression connector will operate cooler than the conductors it connects.
- Internally bevelled barrel.
  - ◇ Provides easy cable entry, especially for flexible conductors.
- Inspection hole.
  - ◇ Provides easy visual check for proper conductor insertion.
- Electro-tin plated.
  - ◇ Provides long lasting durable corrosion resistance.
- Nickel plating available, add "NK" suffix."
  - ◇ Nickel plated Hylugs™ provide high temperature applications up to 650° F continuous service and 750° F intermittent service.

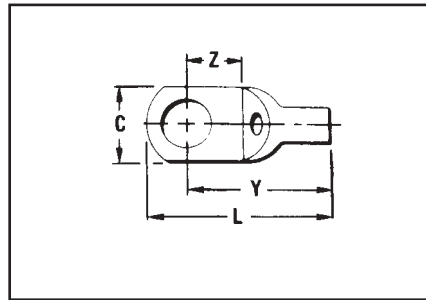


## TYPES YAV BOX AND YAV

### HYLUG™

B-14

SEAMLESS UNINSULATED  
COMPRESSION HEAVY DUTY  
RING TONGUE TERMINAL



CATALOG NUMBER	WIRE RANGE	STUD SIZE	DIMENSIONS				BULK CAT. NO.	INSTALLATION TOOLING	WIRE STRIP LENGTH
			C	L MAX.	Y MAX.	Z MIN.			
YAV18-T4 BOX	22-18 STR. AND SOL.	3,4	.19	.62	.54	.16	YAV18-T4	NON-RATCHET: Y10D, Y10-22 RATCHET: MR8G98, MR8-9Q Y8MRB-1, MR20	9/32"
YAV18-L33 BOX		4-6	.25	.67	.55	.18	YAV18-L33		
YAV18-T5 BOX		4-6	.31	.76	.61	.24	YAV18-T5		
YAV18-T1 BOX		6-8	.31	.76	.61	.24	YAV18-T1		
YAV18 BOX		8-10	.31	.76	.61	.24	YAV18		
YAV14-L33 BOX	20-14 STR.	4-6	.25	.71	.59	.18	YAV14-L33	NON-RATCHET: Y10D, Y10-22 RATCHET: MR8G98 MR8-9Q Y8MRB-1, MR20	9/32"
YAV14-T5 BOX		4-6	.31	.79	.64	.24	YAV14-T5		
YAV14-T1 BOX		6-8	.31	.79	.64	.24	YAV14-T1		
YAV14-L36 BOX	20-12 SOL.	8-10	.29	.74	.59	.18	YAV14-L36		
YAV14 BOX		8-10	.31	.79	.64	.24	YAV14		
YAV14-T2 BOX		1/4	.42	.99	.75	.32	YAV14-T2		
YAV14-T3 BOX	5/16	.44	.99	.75	.32	YAV14-T3			
YAV12-G2 BOX	14-12 STR.	8-10	.30	.82	.67	.24	YAV12-G2	Y10D, Y8MRB-1 M8ND w/N14HT	9/32"
YAV12-G3 BOX ■		1/4	.36	1.00	.76	.34	YAV12-G3		
YAV10-T7 BOX ■	†14 STR. 12-10 STR. AND SOL.	4-6	.30	.93	.78	.24	YAV10-T7	NON-RATCHET: Y10D, Y10-22 RATCHET: MR8G98 MR8-9Q Y8MRB-1, MR20	7/16"
YAV10-T11 BOX		6-8	.38	.97	.79	.26	YAV10-T11		
YAV10-L36 BOX		8-10	.29	.86	.71	.23	YAV10-L36		
YAV10 BOX		8-10	.38	.97	.79	.26	YAV10		
YAV10-T3 BOX		1/4	.47	1.10	.87	.32	YAV10-T3		
YAV10-T2 BOX		5/16	.53	1.13	.87	.31	YAV10-T2		
YAV10-T4 BOX		3/8	.56	1.18	.90	.35	YAV10-T4		
YAV9C-L36 BOX	10-9 STR.	8-10	.31	.97	.83	.15	YAV9C-L36	RATCHET: MR8-9Q, Y8MRB-1	7/16"
YAV9C-T9 BOX		1/4	.44	1.19	.95	.31	YAV9C-T9		
YAV9C-T4 BOX		5/16	.52	1.27	1.02	.36	—		

• Available in (90°) right angle design.

\* Use #10 groove

■ Use #14 groove

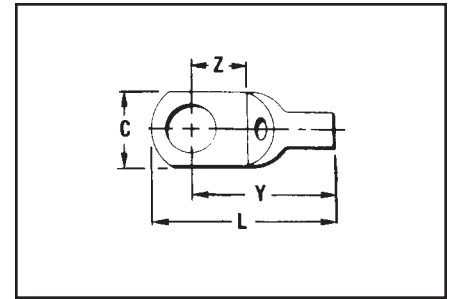
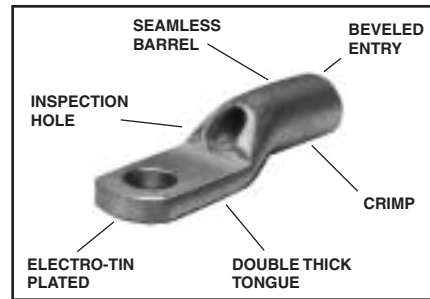
† UL listed for 14 Str. to #10 Sol. & Str'D when installed with MR8G98 and Y8MRB-1 tools only.

## TYPES YAV-L BOX AND YAV-L

### HYLUG™

LARGE SIZE UNINSULATED COMPRESSION TERMINALS  
SEAMLESS UNINSULATED COMPRESSION RING  
TONGUE TERMINAL

#8-4/0 STR. COPPER



B-15



HYLUG™ Type YAV is a seamless, heavy duty uninsulated compression terminal manufactured from electrolytic copper and is for use on Type AN aircraft cable, extra flexible conductors and commercial (code) conductors. The seamless tubing produces a double thick tongue and seamless barrel design provides a

strong connector for demanding applications requiring high reliability.

Applications include aircraft, industrials, hospitals, electric utilities, marine, computers, and other equipment subject to vibration or requiring dependable electrical performance.

The YAV HYLUG™ terminals meet the requirements of MIL-T-7928 and are listed per MS20659 for use with copper aircraft cable per MIL-W-5086

The benefits of YAV-L connectors are the same as YAV connectors for stranded conductors.

CATALOG NUMBER	WIRE RANGE	STUD SIZE	MS20659 DASH NO.†	DIMENSIONS (INCH)				BULK CAT. NO.	INSTALLATION TOOLING				WIRE STRIP LENGTH
				C	L MA-X.	Y MA-X.	Z MIN.		HYTOOL	DIE INDEX	HYPRESS		
											Y29B Y29NC	Y35, Y39, Y750 ▲	
—	8 AIRCRAFT AN 8 FLEX	6-8	-140	.41	1.15	.94	.28	<b>YAV8C-L14•</b>	NON-RATCHET: Y10MV MY29-11 RATCHET: MR4C MR8-9Q Y8MR8-1 M8ND W/ N8CT DIE SET	38	DV8L-1 NEST Y29PL INDENTOR (1) CRIMP	UV8L NEST Y34PL INDENTOR (1) CRIMP	1/2"
YAV8C-L BOX		8-10	-107	.41	1.15	.94	.28	<b>YAV8C-L•</b>					
YAV8C-L1 BOX		1/4	-141	.46	1.22	.99	.32	<b>YAV8C-L1•</b>					
YAV8C-L2 BOX		5/16	-108	.57	1.30	1.01	.34	<b>YAV8C-L2</b>					
YAV8C-L3 BOX		3/8	-129	.57	1.30	1.01	.34	<b>YAV8C-L3•</b>					
YAV8C-L4 BOX		1/2	-142	.73	1.52	1.14	.48	<b>YAV8C-L4•</b>					
YAV6C-L1 BOX	5 & 6 AIRCRAFT AN 5 & 6 FLEX	8-10	-130	.48	1.31	1.06	.29	<b>YAV6C-L1•</b>	NON-RATCHET: MY28 MY29-11 RATCHET: MR4C	39	DV6L NEST Y29PL INDENTOR (1) CRIMP	UV6L NEST Y34PLA INDENTOR (1) CRIMP	1/2"
YAV6C-L BOX		1/4	-109	.48	1.31	1.06	.29	<b>YAV6C-L•</b>					
YAV6C-L4 BOX		5/16	-131	.60	1.43	1.13	.35	<b>YAV6C-L4•</b>					
YAV6C-L2 BOX		3/8	-110	.60	1.43	1.13	.35	<b>YAV6C-L2•</b>					
YAV6C-L10 BOX		1/2	-143	.73	1.64	1.26	.49	<b>YAV6C-L10</b>					
YAV4C-L3 BOX	4 AIRCRAFT AN 4 FLEX	8-10	-144	.55	1.37	1.11	.28	<b>YAV4C-L3•</b>	NON-RATCHET: MY28 MY29-11 RATCHET: MR4C	40	DV4L NEST Y29PL INDENTOR (1) CRIMP	UV4L NEST Y34PLA INDENTOR (1) CRIMP	1/2"
YAV4C-L BOX		1/4	-111	.55	1.37	1.11	.28	<b>YAV4C-L</b>					
YAV4C-L4 BOX		5/16	-132	.63	1.48	1.17	.33	<b>YAV4C-L4•</b>					
YAV4C-L2 BOX		3/8	-112	.63	1.48	1.17	.33	<b>YAV4C-L2•</b>					
YAV4C-L5 BOX		1/2	-145	.73	1.68	1.30	.47	<b>YAV4C-L5</b>					
—	2 AIRCRAFT AN 2 FLEX	8-10	-146	.69	1.72	1.37	.35	<b>YAV2C-L3</b>	NON-RATCHET MY28 MY29-11	41	DV2L NEST Y29PL INDENTOR (1) CRIMP	UV2L NEST Y34PLA INDENTOR (1) CRIMP	5/8"
YAV2C-L1 BOX		1/4	-113	.69	1.72	1.37	.35	<b>YAV2C-L1•</b>					
YAV2C-L2 BOX		5/16	-147	.69	1.72	1.37	.35	<b>YAV2C-L2•</b>					
YAV2C-L BOX		3/8	-114	.69	1.72	1.37	.35	<b>YAV2C-L•</b>					
YAV2C-L4 BOX		1/2	-133	.77	1.89	1.49	.46	<b>YAV2C-L4</b>					

† Class 1.  
• Available in (90°) right angle design. Suffix "RS" REPLACES SUFFIX "L".  
▲ Use Y35P3 INDENTOR ADAPTER with Y35 and Y39 Tool.

■ Bench Mount Adapter - Cat. BMY-BCH-MT is available for Type "MY" HYTOOLS™. Add "NK" suffix for nickel plated Hylugs™ for high temperature applications up to 650° F continuous service and 750° intermittent service.

## TYPES YAV-L BOX AND YAV-L (Continued)

### HYLUG™

B-16

CATALOG NUMBER	WIRE RANGE	STUD SIZE	MS20659 DASH NO.†	DIMENSIONS (INCH)				BULK CAT. NO.	INSTALLATION TOOLING				WIRE STRIP LENGTH
				C	L MA-X.	Y MA-X.	Z MIN.		HYTOOL	DIE INDEX	HYPRESS		
											Y29B Y29NC	Y35, Y39, Y750 ▲	
—		8-10	—	.76	1.67	1.32	.25	YAV1C-L6					
YAV1C-L1 BOX	1 AIRCRAFT AN 1 FLEX	1/4	-115	.76	1.84	1.45	.38	YAV1C-L1•	NON- RATCHET MY28 MY29-11	42	DV1L NEST Y29PL INDENTOR (1) CRIMP	UV1L NEST Y34PLA INDENTOR (1) CRIMP	5/8"
YAV1C-L2 BOX		5/16	-149	.76	1.84	1.45	.38	YAV1C-L2•					
YAV1C-L BOX		3/8	-116	.76	1.84	1.45	.38	YAV1C-L					
YAV1C-L3 BOX		1/2	-134	.86	1.97	1.54	.46	YAV1C-L3					
YAV25-L1 BOX	1/0 AIRCRAFT AN 1/0 FLEX	1/4	-117	.83	2.01	1.61	.43	YAV25-L1		43	DV25L NEST Y29PR INDENTOR (1) CRIMP	UV25L NEST Y34PA INDENTOR (1) CRIMP	11/16"
YAV25-L2 BOX		5/16	-151	.83	2.01	1.61	.43	YAV25-L2					
YAV25-L BOX		3/8	-118	.83	2.01	1.61	.43	YAV25-L•					
YAV25-L3 BOX		1/2	-135	.88	2.09	1.64	.46	YAV25-L3•					
YAV25-L4 BOX	5/8	—	.88	2.31	1.80	.62	YAV25-L4						
YAV26-L1 BOX	2/0 AIRCRAFT AN 2/0 FLEX	1/4	-153	.93	2.32	1.85	.48	YAV26-L1		44	DV26L NEST Y29PL INDENTOR (1) CRIMP	UV26L NEST Y34PA INDENTOR (1) CRIMP	13/16"
YAV26-L2 BOX		5/16	-119	.93	2.32	1.85	.48	YAV26-L2					
YAV26-L BOX		3/8	-120	.93	2.32	1.85	.48	YAV26-L•					
YAV26-L3 BOX		1/2	-136	.93	2.32	1.85	.48	YAV26-L3•					
YAV26-L12 BOX	5/8	—	.93	2.52	1.99	.62	YAV26-L12						
YAV27-L BOX	3/0 AIRCRAFT AN 3/0 FLEX	3/8	-121	1.03	2.45	1.93	.52	YAV27-L•		45	—	UV27L NEST Y34PA INDENTOR (1) CRIMP	13/16"
YAV27-L1 BOX		1/2	-122	1.03	2.45	1.93	.52	YAV27-L1					
YAV27-L15 BOX		5/8	—	1.03	2.60	2.04	.62	YAV27-L15					
YAV28-L BOX	4/0 AIRCRAFT AN 4/0 FLEX	3/8	-123	1.12	2.72	2.16	.60	YAV28-L	46	—	UV28L NEST Y34PA INDENTOR (1) CRIMP	7/8"	
YAV28-L12 BOX		1/2	-124	1.12	2.72	2.16	.60	YAV28-L12					
YAV28-L13 BOX		5/8	-159	1.12	2.72	2.16	.60	YAV28-L13					
YAV28-L14 BOX		3/4	-160	1.23	2.95	2.33	.78	YAV28-L14					

† Class 1.

- Available in (90°) right angle design. Suffix "RS" replaces suffix "L".
- ▲ Use Y35P3 INDENTOR ADAPTER with Y35 and Y39 Tool.

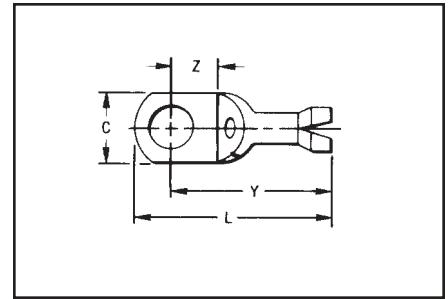
■ Bench Mount Adapter - Cat. BMY-BCH-MT is available for Type "MY" HYTOOLS™. Add "NK" suffix for nickel plated Hylugs™ for high temperature applications up to 650° F continuous service and 750° intermittent service.



## TYPES YAV-H BOX AND YAV-H

### HYLUG™

#### SEAMLESS UNINSULATED COMPRESSION RING TONGUE TERMINAL WITH SHROUD



B-17

The type YAV-H HYLUG™ is a seamless heavy duty uninsulated compression ring tongue terminal with a shroud for an insulation grip and cable support. They are manufactured from pure electrolytic copper tubing for use on copper commercial (code) cable, Type AN aircraft cable and extra flexible conductors.

The seamless design produces a double thick tongue and the seamless barrel provides a strong highly reliable connection.

Meets the requirements of MIL-T-7928. The benefits of the Type YAV apply to the YAV-H HYLUG™.

#### Features and Benefits

- Shroud/insulation grip cable support and strain relief.
- ◊ Protects the wire against breaking under vibration or flexing conditions.



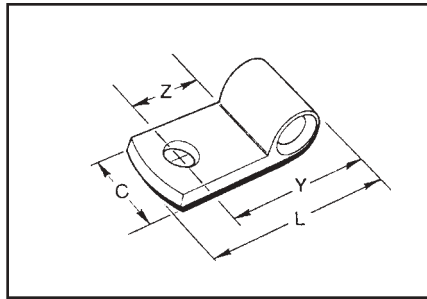
CATALOG NUMBER	WIRE RANGE	STUD SIZE	MAX. INSUL. DIA. ACCOM.	DIMENSIONS				BULK CAT. NO.	INSTALL. TOOLING	DIES	WIRE STRIP LENGTH
				C	L MAX	Y MAX	Z MIN				
YAV18-H1 BOX	22-18	6-8	.120"	.31	.91	.76	.24	YAV18-H1	PLIER: Y10D*, Y10-22*	M8ND, WITH N14HT, N14HT-5 DIE	9/32"
YAV18-H BOX		8-10		.31	.91	.76	.24	YAV18-H			9/32"
YAV14-H1 BOX	20-14	6-8	.150"	.31	.95	.80	.24	YAV14-H1		RATCHET: MR8-G98, MR8-9Q, Y8MRB-1*, MR20*, M8ND	M8ND WITH N10HT DIE
YAV14-H BOX		8-10		.31	.95	.80	.24	YAV14-H			
YAV14-H2 BOX		1/4		.42	1.14	.90	.32	YAV14-H2			
YAV10-H25 BOX	12-10	6-8	.192"	.31	1.04	.90	.24	YAV10-H25			
YAV10-H BOX		8-10		.38	.109	.91	.24	YAV10-H			
YAV10-H3 BOX		1/4		.47	1.22	.99	.32	YAV10-H3			

\* For conductor crimp only.

## TYPE YBM

### HYLUG™

#### FLAG-TYPE RING-TONGUE TERMINALS



B-18

Made of pure electrolytic copper for maximum conductivity and ductility. Seamless extrusion tin plated to resist corrosion.

WIRE RANGE	STUD SIZE	CATALOG* NUMBER	DIMENSIONS IN INCHES				HYTOOL	INSTALLATION TOOLING		WIRE STRIP LENGTH
			C	Z MIN.	Y MAX.	L MAX.		HYPRESS Y29NC & Y29B		
								NEST	INDENTOR	
8	8-10	YBM8C	0.44	0.34	0.77	1.01	MY28	DV8B	Y29PBL-4	7/16"
	1/4	YBM8C-T2	0.50	0.37	0.80	1.07				1/2"
	3/8	YBM8CT4	0.62	0.52	0.83	1.35				9/16"
6	8-10	YBM6C-L9	0.50	0.37	0.85	1.09		DV6BL	Y29PBL-4	1/2"
	1/4	YBM6C-L	0.50	0.37	0.85	1.12				9/16"
	5/16	YBM6C-L2	0.56	0.43	0.91	1.21				5/8"
4	8-10	YBM4C-L4	0.50	0.37	0.99	1.18		DV4BL	Y29PBL	1/2"
	1/4	YBM4C-L	0.50	0.37	0.94	1.21				9/16"
	5/16	YBM4C-L1	0.56	0.43	1.00	1.30				5/8"
2	1/4	YBM2C-L1	0.62	0.37	1.01	1.29		DV2BL	Y29PL	5/8"
	5/16	YBM2C-L2	0.62	0.43	1.07	1.38				1"
	3/8	YBM2C-L	0.62	0.37	1.01	1.35				5/8"
1	1/2	YBM1C-L3	0.88	0.71	1.29	1.74	DV1BL	Y29PR	3/4"	
	3/8	YBM1C-L	0.62	0.50	1.19	1.53			13/16"	
1/0	1/4	YBM25-L1	0.69	0.52	1.19	1.83	DV25BL-1	Y29PR	3/4"	
	5/16	YBM25-L2	0.69	0.46	1.25	1.56			3/4"	
	3/8	YBM25-L	0.69	0.58	1.26	1.59			3/4"	
2/0	3/8	YBM26-L	0.81	0.51	1.37	1.72	DV28L		13/16"	

\* Lead Plated available, contact factory.

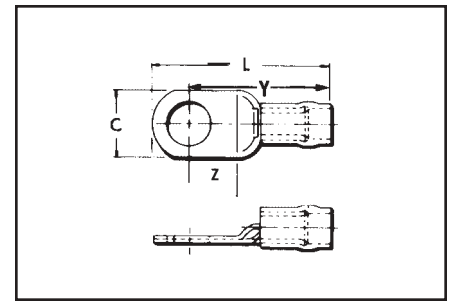
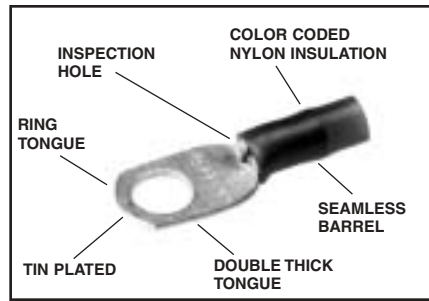
### TYPES YAEV AND YAEV-L

#### INSULUG™

#### TERMINAL - NYLON INSULATED - RING-TONGUE

300 VOLTS MAX. 105° C MAX.

The INSULUG™ type YAEV is designed for very demanding high vibration applications encountered in aircraft and aboard ships as well as motor lead applications in hospitals, industrials and generating plants. The nylon insulated seamless, electrolytic copper barrel with double thick tongue provides an extra strong insulated connection. The terminal is rated 105°C and meets MIL-T-7928 requirements.



#### Features and Benefits

- Double thick tongue.
  - ◇ Provides maximum reliability and electrical capacity plus an extra strong terminal tongue.
- Manufactured from one-piece pure electrolytic copper.
  - ◇ Provides high conductivity, low resistance with no seams to split plus ductility for excellent crimp forming properties.
- Electro-tin plated.
  - ◇ Provides long-lasting corrosion resistance.
- Nylon insulation is locked in place.
  - ◇ Insulation will not move or twist off.
- 300 volt nylon insulation.
  - ◇ High dielectric strength and stability in demanding oily environmental conditions.
- Color Coded.
  - ◇ Provides quick, easy wire size connector selection.

CATALOG NUMBER	WIRE RANGE AWG AN AIRCRAFT	STUD SIZE	MS25036-* DASH NO.	DIMENSIONS				BULK CATALOG NUMBER	INSTALLATION TOOLING	WIRE STRIP LENGTH
				C	Z MIN.	Y MAX.	L MAX.			
YAEV18 BOX	22-18 MAX. INSUL. DIA. ACCOM.: .125 COLOR CODE: RED	8-10	—	.31	.24	.77	.91	YAEV18	RATCHET: MR8D94	1/4"
YAEV14 BOX	18-14 MAX. INSUL. DIA. ACCOM.: .154 COLOR CODE: BLUE	8-10	—	.31	.24	.88	.94	YAEV14	RATCHET: MR18 MR8D94	1/4"
YAEV10-T7 BOX	12-10 MAX. INSUL. DIA. ACCOM.: .209 COLOR CODE: YELLOW	4-6	—	.30	.24	.95	1.09	YAEV10-T7	RATCHET: MR8D94 MR8-33-T1 M8ND WITH N10ET-9 DIE MR18* MR4 10M	5/16"
YAEV10-T11 BOX		6-8	—	.37	.26	.97	1.14	YAEV10-T11		
YAEV10 BOX		8-10	—	.37	.26	.97	1.14	YAEV10		
YAEV10-L36BOX		8-10	—	.30	.18	.89	1.04	YAEV10-L36		
YAEV10-T3 BOX		1/4	—	.47	.38	1.12	1.30	YAEV10-T3		
YAEV10-T2 BOX		5/16	—	.53	.31	1.12	1.30	YAEV10-T2		
YAEV10-T4 BOX		3/8	—	.56	.35	1.12	1.35	YAEV10-T4		

\* No. 10 Str. Cu. only.

## TYPES YAEV AND YAEV-L

(Continued)

### INSULUG™

B-20

CATALOG NUMBER	WIRE RANGE	STUD SIZE †	MS25036 DASH NO.	DIMENSIONS				BULK CATALOG NUMBER	INSTALLATION TOOLING	HYPRESS Y29NC		WIRE STRIP LENGTH
				C	Z MIN.	Y MAX.	L MAX.			NEST	INDENTOR	
YAEV8C-L14 BOX	8 STR. MAX. INSUL. DIA ACCOM.: .258 COLOR CODE: RED	6-8	—	.41	.28	1.20	1.40	YAEV8C-L14	RATCHET: M8ND, WITH N8CET-2DIE NON-RATCHET: MY28-6* HYDRAULIC: Y35, Y39 WITH U8CET DIE SET	DEV8L	Y29PLE-1 Y29PLE-1	7/16"
YAEV8C-L BOX		8-10	-115	.41	.28	1.20	1.40	YAEV8C-L				
YAEV8C-L1 BOX		1/4	-116	.46	.33	1.24	1.47	YAEV8-L1				
YAEV8C-L2 BOX		5/16	-177	.57	.35	1.28	1.55	YAEV8C-L2				
YAEV8C-L3 BOX		3/8	-118	.57	.35	1.39	1.55	YAEV8C-L3				
YAEV8C-L4 BOX		1/2	—	.73	.47	1.39	1.75	YAEV8C-L4				
—	6 STR. MAX. INSUL. DIA. ACCOM.: .313 COLOR CODE: BLUE	8-10	-119**	.48	.29	1.33	1.56	YAEV6C-L1**	RATCHET: NON-RATCHET: MY28-6* HYDRAULIC: Y35, Y39 WITH U6CET DIE SET	DEV6L	Y29PLE-1 Y29PLE-1	1/2"
—		1/4	-120**	.48	.29	1.33	1.56	YAEV6C-L**				
—		5/16	-121**	.60	.36	1.39	1.68	YAEV6C-L4**				
—		3/8	-122**	.60	.36	1.39	1.68	YAEV6C-L2**				
—		1/2	—	.73	.47	1.53	1.91	YAEV6C-L10				
—	4 STR. MAX. INSUL. DIA ACCOM.: .374 COLOR CODE: YELLOW	8-10	—	.55	.28	1.40	1.62	YAEV4C-L3	NON-RATCHET: MY28-6* HYDRAULIC: Y35, Y39 WITH U4CET DIE SET	DEV4L	Y29PLE-1 Y29PLE-1	1/2"
—		1/4	-123	.55	.28	1.37	1.62	YAEV4C-L				
—		5/16	-124	.63	.34	1.43	1.74	YAEV4C-L4				
—		3/8	-125	.63	.34	1.43	1.74	YAEV4C-L2				
—		1/2	—	.73	.47	1.56	1.92	YAEV4C-L5				
—	2 STR. MAX. INSUL. DIA ACCOM.: .459 COLOR CODE : RED	10	—	.69	.35	1.72	2.03	YAEV2C-L3	NON-RATCHET: MY28-6* HYDRAULIC: Y35, Y39 WITH U2CET DIE SET	DEV2L	Y29PLE Y29PLE	5/8"
—		1/4	-126	.69	.35	1.61	2.03	YAEV2C-L1				
—		5/16	—	.69	.35	1.68	2.03	YAEV2C-L2				
—		3/8	-127	.69	.35	1.69	2.03	YAEV2C-L				
—		1/2	-128	.77	.47	1.80	2.16	YAEV2C-L4				
—	1 STR. MAX INSUL. DIA. ACCOM.: .516 COLOR CODE: WHITE	1/4	-129	.76	.38	1.63	2.14	YAEV1C-L1	NON-RATCHET: MY28-6* HYDRAULIC: Y35, Y39 WITH U1CET DIE SET	DV26L	Y29PLE Y29PLE	5/8"
—		5/16	—	.76	.38	1.71	2.14	YAEV1C-L2				
—		3/8	-130	.76	.38	1.72	2.14	YAEV1C-L				
—		1/2	-131	.86	.47	1.86	2.27	YAEV1C-L3				
—	1/0 STR. MAX. INSUL. DIA. ACCOM.: .564 COLOR CODE: BLUE	1/4	-132	.83	.43	1.97	2.40	YAEV25-L1	NON-RATCHET: MY28-6* HYDRAULIC: Y35, Y39 WITH U25ET DIE SET	DEV25L	Y29PLE Y29PLE	11/16"
—		5/16	—	.83	.43	1.97	2.40	YAEV25-L2				
—		3/8	-133	.83	.43	1.97	2.40	YAEV25-L				
—		1/2	-134	.88	.47	2.02	2.46	YAEV25-L3				
—		5/8	—	.88	.63	2.17	2.67	YAEV25-L4				
—	2/0 STR. MAX. INSUL. DIA. ACCOM.: .628 COLOR CODE: YELLOW	1/4	—	.93	.49	2.19	2.72	YAEV26-L1	NON-RATCHET: MY28-6* HYDRAULIC: Y35, Y39 WITH U26ET DIE SET	DEV26L	Y29PLE Y29PLE	13/16"
—		5/16	-135	.93	.49	2.19	2.72	YAEV26-L2				
—		3/8	-136	.93	.49	2.19	2.72	YAEV26-L				
—		1/2	-137	.93	.49	2.27	2.72	YAEV26-L3				
—		5/8	—	.93	.63	2.43	2.72	YAEV26-L12				

† Additional terminal stud sizes available.

\* BMY, BNCH-MT bench mount adapter available.

\*\* NOTE: Add suffix "M" to cat. number to conform to MS25036 - standard for these items only (example: YAE6C-L1M).

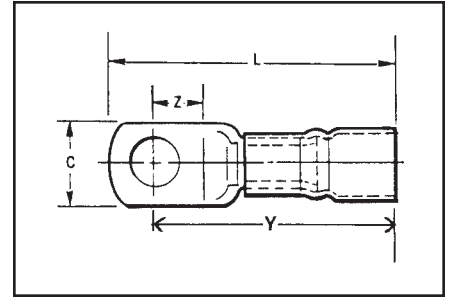
See above. Contact Burndy for UL listed products.

## TYPE YAEV-H

### INSULUG™

#### RING-TONGUE TERMINALS

#### NYLON-INSULATED FOR EXPANDED INSULATION



B-21

Designed to accommodate larger conductor insulation diameters. Made of one piece tin plated pure electrolytic seamless copper tubing for maximum conductivity and ductility. Color-coded insulating sleeves are locked into position. Inspection hole permits visual check of wire insertion. Meets requirements of MIL-T-7928

BULK CATALOG NUMBER	WIRE RANGE	STUD SIZE	C	Z MIN.	Y MAX	L MAX	INSTALLATION TOOLING			WIRE STRIP LENGTH
							HYTOOL HYPRESS	Y29NC		
								NEST	INDENTOR	
YAEV8C-H14	8 MAX. INSUL. DIA.: .30" SLEEVE COLOR: RED	6-8	.41	.25	1.32	1.54	M8ND WITH N8CET-2 DIE	DEV8L	Y29PLE-1	7/16"
YAEV8C-H		8-10	.41	.25	1.34	1.54				
YAEV8C-H1		1/4	.46	.28	1.37	1.61				
YAEV8C-H2		5/16	.57	.33	1.39	1.68				
YAEV8C-H3		3/8	.57	.33	1.39	1.68				
YAEV8C-H4		1/2	.73	.47	1.52	1.91				
YAEV6C-H1	6 MAX. INSUL. DIA.: .38" SLEEVE COLOR: BLUE	8-10	.48	.28	1.48	1.73	MY28-6* WITH U6CET DIE SET	DEV6L	Y29PLE-1	1/2"
YAEV6C-H		1/4	.48	.28	1.48	1.73				
YAEV6C-H4		5/16	.60	.33	1.54	1.85				
YAEV6C-H2		3/8	.60	.34	1.54	1.85				
YAEV6C-H10		1/2	.73	.47	1.68	2.06				
YAEV4C-H3		4 MAX. INSUL. DIA.: .44" SLEEVE COLOR: YELLOW	8-10	.55	.28	1.60				
YAEV4C-H	1/4		.55	.28	1.60	1.87				
YAEV4C-H4	5/16		.62	.34	1.66	1.98				
YAEV4C-H2	3/8		.62	.34	1.66	1.98				
YAEV4C-H5	1/2		.73	.47	1.79	2.18				
YAEV2C-H3	2 MAX. INSUL. DIA.: .52" SLEEVE COLOR: RED	8-10	.69	.35	1.98	2.34	MY28-6* Y35, Y39 WITH U2CET DIE	DEV2L	Y29PLE	5/8"
YAEV2C-H1		1/4	.69	.35	1.98	2.34				
YAEV2C-H2		5/16	.69	.35	1.98	2.34				
YAEV2C-H		3/8	.69	.35	1.98	2.34				
YAEV2C-H4		1/2	.77	.47	2.10	2.49				
YAEV1C-H1		1 MAX. INSUL. DIA.: .58" SLEEVE COLOR: WHITE	1/4	.76	.38	2.10				
YAEV1C-H2	5/16		.76	.38	2.10	2.49				
YAEV1C-H	3/8		.76	.38	2.10	2.49				
YAEV1C-H3	1/2		.86	.47	2.10	2.62				

\* BMY BNCH-MT bench mount adapter available.

## TYPE YAEV-H (Continued)

B-22

BULK CATALOG NUMBER	WIRE RANGE	STUD SIZE	C	Z MIN.	Y MAX	L MAX	INSTALLATION TOOLING			WIRE STRIP LENGTH
							HYTOOL HYPRESS	Y29NC		
								NEST	INDENTOR	
YAEV25-H1	1/0 MAX. INSUL. DIA.: .66" SLEEVE COLOR: BLUE	1/4	.83	.43	2.39	2.82	MY28-6*	DEV25L	Y29PLE	11/16"
YAEV25-H2		5/16	.83	.43	2.39	2.82				
YAEV25-H		3/8	.83	.43	2.39	2.82	Y35, Y39 WITH U25ET DIE SET			
YAEV25-H3		1/2	.88	.47	2.43	2.88				
YAEV25-H4		5/8	.88	.62	2.59	3.10				
YAEV26-H1	2/0 MAX. INSUL. DIA.: .73" SLEEVE COLOR: YELLOW	1/4	.94	.48	2.65	3.13	MY28-6*	DEV26L	Y29PLE	13/16"
YAEV26-H2		5/16	.94	.48	2.65	3.13				
YAEV26-H		3/8	.94	.48	2.65	3.13	Y35, Y39 WITH U26ET DIE SET			
YAEV26-H3		1/2	.94	.48	2.65	3.13				
YAEV26-H12		5/8	.94	.62	2.70	3.33				

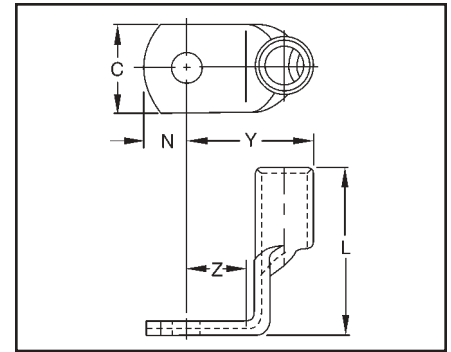
\* BMY BNCH-MT bench mount adapter available.

## TYPES YAV-R, YAV-RS

### HYLUG™

#### HEAVY DUTY RIGHT-ANGLE TERMINALS

Factory formed right angle HYLUG™ connectors made of seamless pure copper tubing. These rugged terminals withstand the most severe applications. Inspection hole in barrel permits visual check of wire insertion. Tin plated to resist corrosion. Meets requirements of MIL-T-7928.



B-23

CATALOG NUMBER	WIRE RANGE	STUD SIZE	DIMENSIONS					INSTALLATION TOOLING	WIRE STRIP LENGTH
			C	L MAX	Y MAX	Z MIN	N		
YAV18-R	22-18	8-10	.31	.35	.54	.25	.16	NON-RATCHET: Y10D RATCHET: Y8MRB-1 MR20 MR8-G98 MR8-9Q	1/4
YAV14-RL33	20-14	4-6	.25	.37	.45	.21	.12		
YAV14-R		8-10	.31	.38	.57	.25	.16		
YAV10-R	12-10	8-10	.38	.55	.58	.25	.19	5/16	
YAV10-R3 BOX		1/4	.47	.57	.60	.28	.23		

BULK CATALOG NUMBER	WIRE	STUD	DIMENSIONS IN INCHES					INSTALLATION TOOLING		WIRE STRIP LENGTH	
			C	L MAX.	Y MAX.	Z MIN.	N	HYTOOL	HYPRESS Y29NC		
									NEST		INDENTOR
YAV8C-RS	8	8-10	.41	1.00	.75	.25	.20	MY28 MY29-11	DV8L-1*	Y29PL	7/16"
YAV8C-RS1		1/4	.41	1.00	.79	.28	.20				
YAV8C-RS3		3/8	.56	1.00	.85	.34	.20				
YAV6C-RS1	6	8-10	.50	1.02	.81	.28	.25	MY28 MY29-11	DV6L	Y29PL	1/2"
YAV6C-RS		1/4	.50	1.02	.81	.28	.25				
YAV6C-RS4		5/16	.59	1.02	.89	.34	.31				
YAV6C-RS2		3/8	.59	1.02	.89	.34	.31				
YAV4C-RS3	4	8-10	.53	1.04	.87	.28	.25	MY28 MY29-11	DV4L	Y29PL	1/2"
YAV4C-RS		1/4	.53	1.04	.87	.28	.25				
YAV4C-RS4		5/16	.62	1.04	.95	.34	.31				
YAV4C-RS2	2	3/8	.62	1.04	.95	.34	.31	MY28 MY29-11	DV2L	Y29PL	5/8"
YAV2C-RS1		1/4	1.27	1.05	.34	.33	.33				
YAV2C-RS2		5/16	.68	1.27	1.05	.34	.33				
YAV2C-RS	1	3/8	.68	1.27	1.05	.34	.33	MY28 MY29-11	DV1L	Y29PL	5/8"
YAV1C-RS1		1/4	.73	1.35	1.15	.34	.33				
YAV1C-RS2		5/16	.73	1.35	1.15	.34	.33				
YAV25-RS	1/0	3/8	.82	1.51	1.29	.43	.39	MY28 MY29-11	DV25L	Y29PR	11/16"
YAV25-RS3		1/2	.88	1.51	1.32	.47	.44				
YAV26-RS	2/0	3/8	.92	1.63	1.40	.47	.39	MY28 MY29-11	DV26L	Y29PR	13/16"
YAV26-RS3		1/2	.92	1.63	1.40	.47	.39				
YAV27-RS	3/0	3/8	1.02	1.65	1.54	.47	.48	—	—	—	7/8"
YAV28-RS	4/0	3/8	1.13	1.80	1.54	.47	.48	—	—	—	7/8"

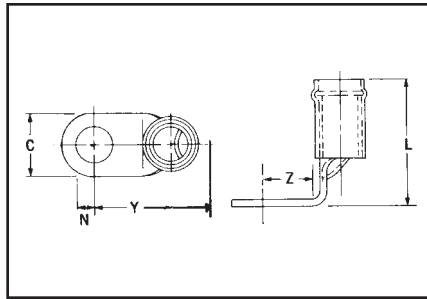
\* For aircraft applications (Flexible Cable) use die DV8L-1

## TYPES YAEV-RS

### INSULUG™

#### RIGHT-ANGLE TERMINALS

#### NYLON-INSULATED



B-24

Factory formed right angle INSULUG™ connectors made of seamless pure copper tubing. These rugged terminals withstand the most severe applications. Inspection hole in barrel permits visual check of wire insertion. Meets requirements of MIL-T-7928.

CATALOG NUMBER	WIRE SIZE	STUD SIZE	N	C	Z MIN.	Y MAX.	L MAX.	INSTALLATION TOOLING			LENGTH	
								HYTOOL	HYPRESS Y29NC			
									NEST	INDENTOR		
YAEV8C-RS	8 MAX. INSUL. DIA.: .258" SLEEVE COLOR: RED	8-10	.20	.41	.25	.82	1.25	A	DEV8L	Y29PLE-1	7/16"	
YAEV8C-RS1		1/4	.25	.41	.28	.84	1.25					
YAEV6C-RS1	6 MAX. INSUL. DIA.: .313" SLEEVE COLOR: BLUE	8-10	.25	.50	.28	.88	1.28	B	DEV6L		Y29PLE	1/2"
YAEV6C-RS		1/4	.25	.50	.28	.88	1.20					
YAEV4C-RS	4 MAX. INSUL. DIA.: .374" SLEEVE COLOR: YELLOW	1/4	.25	.53	.28	.95	1.28	C	DEV4L			Y29PLE
YAEV4C-RS2		3/8	.31	.62	.34	1.02	1.28					
YAEV2C-RS1	2 MAX. INSUL. DIA.: .459" SLEEVE COLOR: RED	1/4	.33	.68	.34	1.13	1.62	D	DEV2L	Y29PLE	5/8"	
YAEV2C-RS		3/8	.33	.68	.34	1.13	1.62					
YAEV1C-RS2	1 MAX. INSUL. DIA.: .516" SLEEVE COLOR: WHITE	5/16	.33	.73	.34	1.22	1.65	E	DEV26L		Y29PLE	5/8"
YAEV1C-RS		1/4	.33	.73	.34	1.22	1.65					
YAEV25-RS	1/0 MAX. INSUL. DIA.: .564" SLEEVE COLOR: BLUE	3/8	.39	.81	.43	1.46	1.88	F	DEV25L	Y29PLE		11/16"
YAEV26-RS	2/0 MAX. INSUL. DIA.: .628" SLEEVE COLOR: YELLOW	3/8	.39	.92	.47	1.48	2.06	G	DEV26		13/16"	

A	B	C	D	E	F	G
RATCHET: M8ND WITH N8CET-2 DIE NON-RATCHET: MY28-6†† HYDRAULIC: Y35, Y39 WITH U8 CET DIE SET	RATCHET: NON-RATCHET: MY28-6†† HYDRAULIC: Y35, Y39 WITH U6CET DIE SET	NON-RATCHET: MY28-6†† HYDRAULIC: Y35, Y39 WITH U4CET DIE SET	NON-RATCHET: MY28-6†† HYDRAULIC: Y35, Y39 WITH U2CET DIE SET	NON-RATCHET: MY28-6†† HYDRAULIC: Y35, Y39 WITH U1CET DIE SET	NON-RATCHET: MY28-6†† HYDRAULIC: Y35, Y39 WITH U25ET DIE SET	NON-RATCHET: MY28-6†† HYDRAULIC: Y35, Y39 WITH U26ET DIE SET

†† BMY BNCH-MT bench mount adapter available.

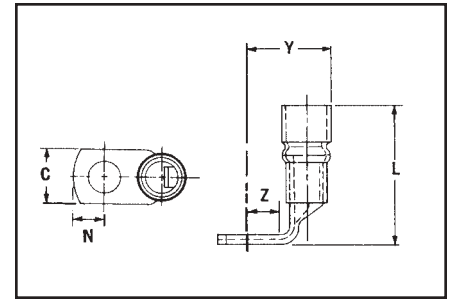


## TYPE YAEV-RH

### INSULUG™

RIGHT-ANGLE TERMINALS,  
NYLON-INSULATED

DESIGNED TO  
ACCOMMODATE  
LARGER CONDUCTOR  
INSULATION DIAMETERS



B-25

Factory formed right angle INSULUG™ connectors made of seamless pure copper tubing. These rugged terminals withstand the most severe applications. Inspection hole in barrel permits visual check of wire insertion. Tin plated to resist corrosion. Meets requirements of MIL-T-7928.

CATALOG NUMBER	WIRE SIZE	STUD SIZE	N	C	Z	Y	L	INSTALLATION TOOLING			LENGTH
								HYTOOL	HYPRESS Y29NC		
									NEST	INDENTOR	
YAEV8C-RH	8 MAX. INSUL. DIA.: .30" SLEEVE COLOR: RED	8-10	.20	.41	.25	.87	1.38	A	DEV8L	Y29PLE-1	7/16"
YAEV8C-RH1		1/4	.25	.41	.28	.90	1.38				
YAEV6C-RH1	6 MAX. INSUL. DIA.: .38" SLEEVE COLOR: BLUE	8-10	.25	.50	.28	.97	1.43	B	DEV6L		1/2"
YAEV6C-RH		1/4	.25	.50	.28	.97	1.43				
YAEV4C-RH	4 MAX. INSUL. DIA.: .44" SLEEVE COLOR: YELLOW	1/4	.25	.53	.28	1.04	1.53	C	DEV4L		1/2"
YAEV4C-RH2		3/8	.31	.62	.34	1.11	1.53				
YAEV2C-RH1	2 MAX. INSUL. DIA.: .52" SLEEVE COLOR: WHITE	1/4	.33	.67	.34	1.22	1.88	D	DEV2L	Y29PLE	5/8"
YAEV2C-RH		3/8	.33	.67	.34	1.22	1.88				
YAEV1C-RH2	1 MAX., INSUL. DIA.: .52" SLEEVE COLOR: WHITE	5/16	.33	.73	.34	1.32	1.99	E	DV26L		5/8"
YAEV1C-RH		1/4	.33	.73	.34	1.32	1.99				
YAEV25-RH	1/0 MAX. INSUL. DIA.: .66" SLEEVE COLOR: BLUE	3/8	.39	.81	.43	1.50	2.29	F	DEV25L		11/16"
YAEV26-RH	2/0 MAX. INSUL. DIA.: .73" SLEEVE COLOR: YELLOW	3/8	.39	.92	.47	1.60	2.42	G	DEV26L		13/16"

CONSULT FACTORY FOR AVAILABILITY

A	B	C	D	E	F	G
RATCHET: M8ND WITH N8CET-2 DIE NON-RATCHET: MY28-6†† HYDRAULIC: Y35, Y39 WITH U8 CET DIE SET	RATCHET: NON-RATCHET: MY28-6†† HYDRAULIC: Y35, Y39 WITH U6CET DIE SET	NON-RATCHET: MY28-6†† HYDRAULIC: Y35, Y39 WITH U4CET DIE SET	NON-RATCHET: MY28-6†† HYDRAULIC: Y35, Y39 WITH U2CET DIE SET	NON-RATCHET: MY28-6†† HYDRAULIC: Y35, Y39 WITH U1CET DIE SET	NON-RATCHET: MY28-6†† HYDRAULIC: Y35, Y39 WITH U25ET DIE SET	NON-RATCHET: MY28-6†† HYDRAULIC: Y35, Y39 WITH U26ET DIE SET

†† BMY BNCH-MT bench mount adapter available.

## TYPES T-F AND YAD-F

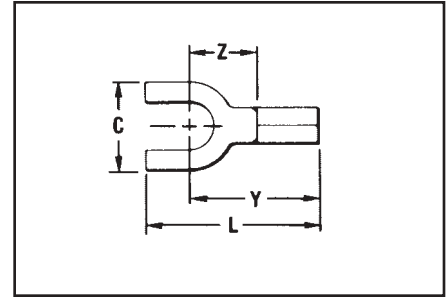
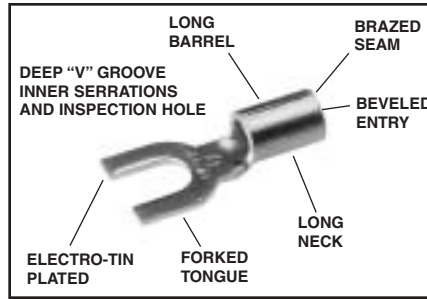
### HYLUG™

#### UNINSULATED COMPRESSION TERMINAL, FORK TONGUE

B-26

Type T-F is constructed in the same manner as the type "T" and employs a fork tongue.

The fork permits rapid installation of the terminal under a screw head without completely removing the screw. Two or more terminals may be stacked easily on a common stud.

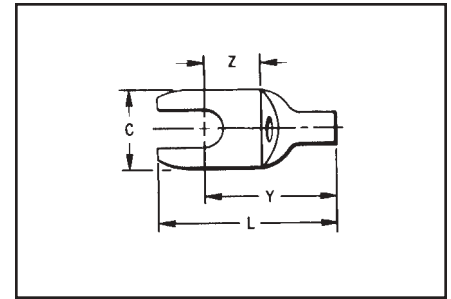
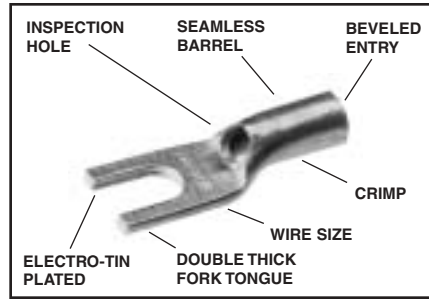


CATALOG NUMBER	WIRE RANGE	STUD SIZE	DIMENSIONS				BULK CAT. NO.	INSTALLATION TOOLING	WIRE STRIP LENGTH
			C	L MAX.	Y MAX.	Z MIN.			
T18-6F	22-18	4-6	.28	.68	.55	.25	YAD18-6F	NON-RATCHET: Y10D, Y10-22 RATCHET: MR8G9, Y8MRB-1 MR20	9/32"
T18-8F		6-8	.31	.74	.57	.27	YAD18-8F		
T18-10F		8-10	.37	.74	.58	.29	YAD18-10F		
T18-14F			.47	.92	.69	.39	YAD18-14F		
T14-6F	20-14	4-6	.28	.68	.55	.25	YAD14-6F	NON-RATCHET: Y10D, Y10-22 RATCHET: MR8G98, Y8MRB-1 MR20	9/32"
T14-8F		6-8	.31	.74	.57	.27	YAD14-8F		
T14-10F		8-10	.37	.74	.58	.29	YAD14-10F		
T14-14F			.47	.92	.69	.39	YAD14-14F		
T10-6F	12-10	4-6	.28	.74	.61	.25	YAD10-6F	NON-RATCHET: Y10D, Y10-22 RATCHET: MRG98, Y8MRB-1 MR20	11/32"
T10-8F		6-8	.31	.80	.63	.27	YAD10-8F		
T10-10F		8-10	.41	.87	.68	.32	YAD10-10F		
T10-14F			.50	1.00	.75	.39	YAD10-14F		

### TYPES YAV-T-F BOX AND YAV-T-F

#### HYLUG™

#### SEAMLESS UNINSULATED COMPRESSION FORK TONGUE TERMINAL



B-27

The type YAV-T-F HYLUG™ is a seamless heavy duty uninsulated compression fork-tongue terminal manufactured from electrolytic copper for use on copper commercial (code) cable, Type AN aircraft cable and extra flexible conductors.

The seamless design produces a double thick tongue and the seamless barrel provides a strong highly reliable connection.

All the benefits of the Type YAV apply for the same wire sizes.

#### Features and Benefits

- Fork tongue.
  - ◇ Allows installation of compression terminal under screw head without complete removal of the screw.



CATALOG NUMBER	WIRE RANGE	STUD SIZE	DIMENSIONS				BULK CAT. NO.	INSTALLATION TOOLING	WIRE STRIP LENGTH
			C	L MAX.	Y MAX.	Z MIN.			
YAV18-T19F BOX	22-18	4-6	.31	.80	.55	.25	YAV18-T19F	NON RATCHET: Y10D, Y10-22	9/32"
YAV18-T21F BOX		8-10	.37	.80	.55	.25	YAV18-T21F		
YAV14-T32F BOX	20-14	4-6	.31	.80	.57	.25	YAV14-T32F	RATCHET: MR8-G98, MR8-9Q, MR20, Y8MRB-1	9/32"
YAV14-T34F BOX		8-10	.37	.82	.60	.26	YAV14-T34F		
YAV10-T21F BOX	12-10	8-10	.38	.91	.69	.26	YAV10-T21F		7/16"
YAV10-T23F BOX		1/4"	.47	1.00	.75	.34	YAV10T23F		

## TYPE YAV-H-F BOX, YAV-H-F AND YAV-Z

### HYLUG™

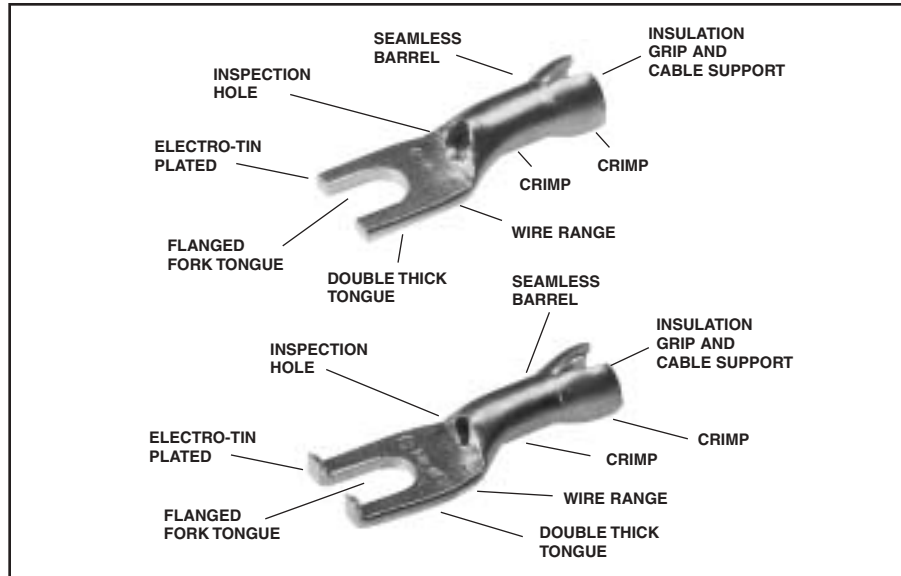
B-28

### UNINSULATED COMPRESSION TERMINAL FORK TONGUE WITH SHROUD SEAMLESS

The type "YAV-H-F" HYLUG™ is a seamless heavy duty uninsulated compression fork tongue terminal with a shroud for an insulation grip and cable support. Manufactured from electrolytic copper tubing for use on copper commercial (code) cable, Type "AN" aircraft and extra flexible conductors.

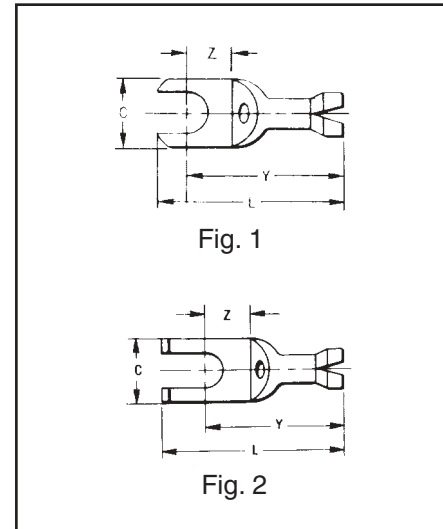
The seamless tubing produces a double thick tongue while the seamless barrel design provides a very strong connector for very demanding applications that require highly reliable connections.

In addition to the benefits described for the YAV box series of connectors the YAVH-F Box and YAV-Z terminals provide the following benefits.



### Features and Benefits

- Fork tongue.
  - ◇ Allows installation of compression terminal under screw head without complete removal of the screw thereby lowering installation costs.
- Flanged fork tongue.
  - ◇ Allows installation of compression terminal under screw head without complete removal of the screw plus aids in maintaining the terminal on the stud should the screw loosen slightly.



CATALOG NUMBER	FIG.	WIRE RANGE	STUD SIZE	MAX. INSUL. DIA. ACOM.	DIMENSIONS				BULK CAT. NO.	INSTALLATION TOOLING	WIRE STRIP LENGTH
					C	L MAX.	Y MAX.	Z MIN.			
YAV18-H6F BOX	1	22-18	4-6	.120	.25	.89	.80	.19	YAV18-H6F	PLIER Y10D*, Y14MV, Y10-22* RATCHET: MR8-G98 MR8-9Q, Y8MRB-1*, MR20, AND M8ND WITH N14HT-5 DIE	1/4"
YAV18-H19F BOX	1		4-6	.120	.30	.97	.75	.21	YAV18-H19F		
YAV18-H21F BOX	1		8-10	.120	.37	.97	.76	.22	YAV18-H21F		
YAV14-Z5 BOX	2	20-14	4-6	.150	.31	.89	.69	.13	YAV14-Z5		
YAV14-H32F BOX	1		4-6	.150	.30	.96	.78	.23	YAV14-H32F		
YAV14-H56F BOX	1		6-8	.150	.30	.96	.78	.23	YAV14-H56F		
YAV14-H34F BOX	1		8-10	.150	.37	.96	.78	.23	YAV14-H34F		
YAV14-HF BOX	1		8-10	.150	.31	.96	.78	.23	YAV14-HF		
YAV14-Z6 BOX	2		8-10	.150	.37	1.04	.78	.21	YAV14-Z6		
YAV10-HF BOX	1		12-10	8-10	.192	.38	1.07	.92	.24		

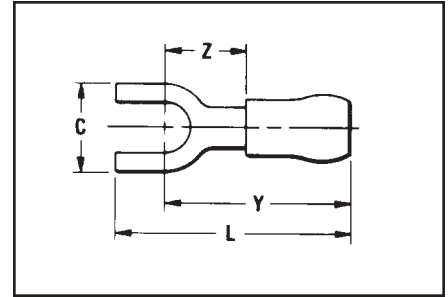
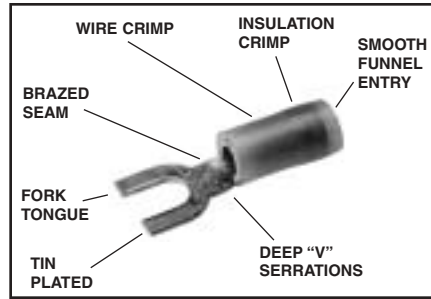
\* Crimps conductor crimp only.

## TYPES TN-F AND YAES-F

### INSULUG™

TERMINAL - NYLON  
INSULATED, FORK TONGUE

300 VOLTS MAX. 105° C MAX



B-29

The type TN-F, nylon insulated fork tongue terminal has the same high quality as the TN. It is designed to meet the heavy-duty requirements of industrial and utility applications.

Used on both power and control circuits for wire sizes #26 AWG through #10 AWG. The TN-F provides high dielectric strength and stability in oily conditions.

The TN-F is identical to the TN with the addition of a fork tongue which allows installation without complete removal of its supporting screw.

### Features and Benefits

- Fork tongue.
  - ◊ Provides faster and easier installation by permitting insertion under the screw head without completely removing it.



CATALOG NUMBERS	WIRE RANGE	STUD SIZES	DIMENSIONS				BULK CAT. NO.	INSTALLATION TOOLING	WIRE STRIP LENGTH
			C	L MAX.	Y MAX.	Z MIN.			
TN20-2F*	26-20 MAX. INSUL. DIA. ACCOM.: .098 COLOR CODE: AMBER	1-2	.18	.73	.65	.24	—	M8ND WITH N14HET-25V1 DIE SET	3/16"
TN20-6F*		4-6	.28	.80	.70	.28	—		
TN18-6F	22-18 MAX. INSUL. DIA. ACCOM.: .120 COLOR CODE: RED	4-6	.28	.79	.65	.24	YAES18N1F	NON-RATCHET: Y10D Y10-22	7/32"
TN18-8F		6-8	.31	.84	.67	.26	YAES18N49F		
TN18-10F		8-10	.37	.84	.68	.27	YAES18N3F		
TN18-14F			.47	1.03	.79	.38	YAES18N50F		
TN14-6F	16-14 MAX. INSUL. DIA. ACCOM.: .153 COLOR CODE: BLUE	4-6	.28	.79	.65	.24	YAES14N6F		7/32"
TN14-8F		6-8	.31	.84	.67	.26	YAES14N53F		
TN14-10F		8-10	.37	.84	.68	.27	YAES14N8F		
TN14-14F			.47	1.03	.79	.38	YAES14N54F		
TN10-6F	12-10 MAX. INSUL. DIA. ACCOM.: .209 COLOR CODE: YELLOW	4-6	.28	.96	.82	.24	YAES10N11F	RATCHET: MR8-83** MR18	11/32"
TN10-8F		6-8	.31	1.01	.84	.26	YAES10N56F		
TN10-10F		8-10	.41	1.09	.89	.31	YAES10N12F		
TN10-14F			.50	1.21	.96	.38	YAES10N57F		

\* These sizes not UL listed.

\*\* Or other tool conforming to military specification MS25037 or MS90413

## TYPES YAE-N-F BOX AND YAE-N-F

### INSULUG™

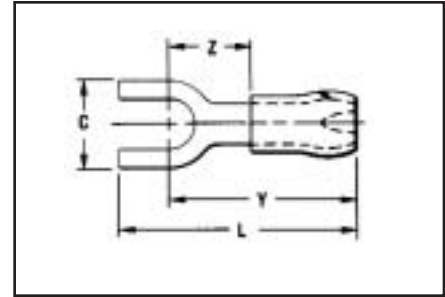
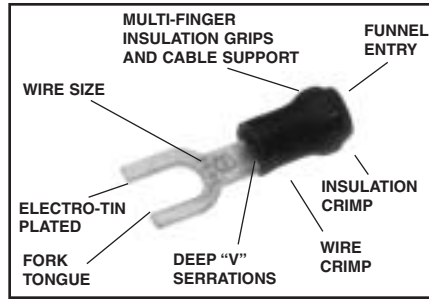
B-30

Terminal — Nylon Insulated, Fork Tongue

Multi-Finger Insulation Grip

300 Volts Max. 105° C Max.

INSULUG™ type YAE-N-F nylon insulated terminals are designed with a Multi-Finger Insulation grip, are rated 105° C and are supplied with a fork tongue for easy terminal insertion and removal.



### Features and Benefits

- Fork tongue.
  - ◇ Permits rapid easy installation of the terminal under the screw head without complete removal of the screw.



CATALOG NUMBER	WIRE RANGE	STUD SIZE	DIMENSIONS				BULK CATALOG NUMBER	INSTALLATION TOOLING	TAPE MOUNTED CATALOG NO. 2000/Reel	INSTALLATION TOOLING	WIRE STRIP LENGTH
			C	L MAX.	Y MAX.	Z MIN.					
YAE22N65F BOX•	24 - 20 Max. Insul. Dia.: .098"	1 - 2	.18	.73	.65	.24	YAE22N65F•	Ratchet: M8ND	YAE22N65FN•	TFM with DFM11D1 Die	5/32"
YAE22N66F BOX•	Sleeve Color: Amber	4 - 6	.28	.80	.70	.28	YAE22N66F•	N14HET25V1 Die	YAE22N66FM•	TFM with DFM10D1 Die	3/16"
YAE18N60F BOX	22 - 16 Max. Insul. Dia.: .125" Sleeve Color: Red	4	.21	.92	.73	.24	YAE18N60F	Non-Ratchet: Y10D or Ratchet: MR8-33T-1, M8ND With one of the following Dies: N14HET-25V1, N10ET-9, N14HET-15	YAE18G60FM	TFM with DFM10D1 Die	3/16"
YAE18G43F BOX		4 - 6	.25	.78	.68	.19	YAE18G43F		YAE18G43FM		
YAE18N56F BOX		4 - 6	.28	.83	.76	.23	YAE18N56F		YAE18N56FM		
YAE18N57F BOX		6 - 8	.31	.96	.78	.29	YAE18N57F		YAE18N57FM		
YAE14N76F BOX	16 - 14 Max. Insul. Dia.: .156" Sleeve Color: Blue	4 - 6	.28	.87	.76	.26	YAE14N76F	Non-Ratchet: Y10D or Y10-22 or Ratchet: MR8-33T1	YAE14N76FM	TFM with DFM9D1 Die	3/16"
YAE14N77F BOX		6 - 8	.31	.96	.78	.29	YAE14N77F		YAE14N77FM		
YAE14N78F BOX		8 - 10	.36	1.01	.83	.34	YAE14N78F		YAE14N78FM		

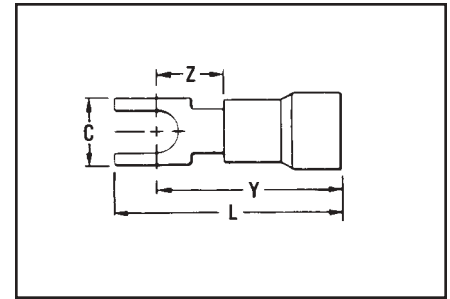
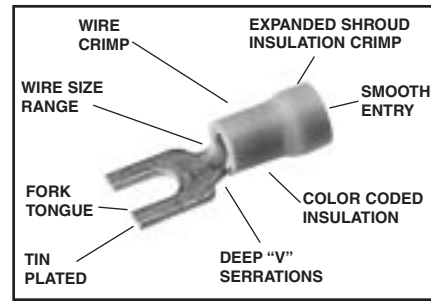
• Not UL recognized.

## TYPES TP-F AND BA-EF

### VINYLU<sup>TM</sup>

TERMINAL -  
POLYVINYLCHLORIDE  
INSULATED, FORK TONGUE

600 VOLTS MAX. 105° C MAX



B-31

### Features and Benefits

The Type TP-F is a fork tongue variation of the TP design and makes installation easier.

- Fork tongue design.
  - ◊ Faster installation-screw needs only to be loosened for termination.



CATALOG NUMBER	WIRE RANGE	STUD SIZE	DIMENSIONS				BULK CATALOG NUMBER •	INSTALLATION TOOLING	TAPE MOUNTED CATALOG NO. 2000/Reel	INSTALLATION TOOLING	WIRE STRIP LENGTH
			C	L MAX	Y MAX	Z MIN					
TP16-2F	22-16 MAX. INSUL. DIA. ACCOM.: .145 COLOR CODE: RED	1-2	.17	.75	.66	.23	BA16EF2	PLIER TYPE: Y10-22	BA16EF2M	TFM WITH DFM3D-1 DIE	13/64"
TP16-6F		4-6	.28	.80	.66	.23	BA16EF6		BA16EF6M		
TP16-8F		6-8	.31	.86	.69	.26	BA16EF8		BA16EF8M		
TP16-10F		8-10	.41	.95	.75	.31	BA16EF10		BA16EF10M		
TP14-2F	16-14 MAX. INSUL. DIA. ACCOM.: .180 COLOR CODE: BLUE	1-2	.17	.75	.66	.23	BA14EF2	RATCHET TOOL: MR8-89-1 MR15	BA14EF2M	TFM WITH DFM2D-1 DIE	13/64"
TP14-6F		4-6	.28	.80	.66	.23	BA14EF6		BA14EF6M		
TP14-8F		6-8	.31	.86	.69	.26	BA14EF8		BA14EF8M		
TP14-10F		8-10	.41	.95	.75	.31	BA14EF10		BA14EF10M		
TP10-6F	12-10 MAX. INSUL. DIA. ACCOM.: .260 COLOR CODE: YELLOW	4-6	.28	.95	.81	.26	BA10EF6		* BA10EF6M	TFM WITH DFM1D5 DIE	19/64"
TP10-8F		6-8	.31	.98	.81	.26	BA10EF8		* BA10EF8M		
TP10-10F		8-10	.41	1.07	.87	.31	BA10EF10		* BA10EF10M		

• UL and CSA listed with MR-8-89-1 and MR15.  
\* 1000/Reel.

## TYPES YAE-Z BOX AND YAE-Z

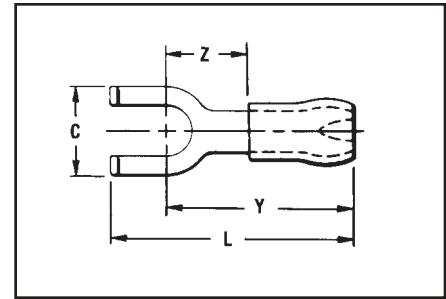
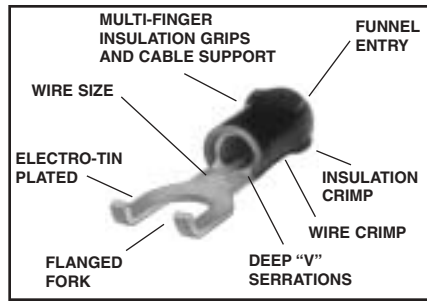
### INSULUG™

TERMINAL -  
NYLON INSULATED,  
FLANGED FORK

MULTI-FINGER  
INSULATION GRIP

300 VOLTS MAX. 105° C MAX

INSULUG™ type YAE-Z is identical to type YAE-N and employs a flanged fork tongue for faster installation while maintaining security if supporting screw becomes loose.



### Features and Benefits

- Flanged fork.
  - ◇ Permits rapid, easy installation of the terminal under the screw head without complete removal of the screw. Additionally, it may not be removed with only a slight loosening of the screw.



CATALOG NUMBER	WIRE RANGE	STUD SIZE	DIMENSIONS				BULK CATALOG NUMBER	INSTALLATION TOOLING	TAPE MOUNTED CATALOG NO. 2000/Reel	INSTALLATION TOOLING	WIRE STRIP LENGTH
			C	Z MAX	Y MAX	L MAX					
YAE22Z1 BOX	26-20 MAX. INSUL. DIA.: .098" SLEEVE COLOR: AMBER	1-2	.18	.24	.65	.75	YAE22Z1	M8ND WITH N14HET-25V1 DIE Y10D, Y10-22	YAE22Z1M	TFM WITH DFM11D1 DIE	5/32"
YAE22Z2 BOX		4-6	.28	.28	.70	.83	YAE22Z2		YAE22Z2M		
YAE22Z3 BOX		6-8	.31	.30	.72	.92	YAE22Z3		YAE22Z3M		
YAE18Z1 BOX	22-16 MAX. INSUL. DIA. ACCOM.: (125) COLOR CODE: RED	1-2	.18	.22	.73	.83	YAE18Z1	MR8-33T-1 M8ND WITH ONE OF THE FOLLOWING DIES N14HET-15 N10HET-9 Y10D, Y10-22	YAE18Z1M	TFM WITH DFM10D1 DIE	3/16"
YAE18Z2 BOX		4-6	.28	.26	.76	1.00	YAE18Z2		YAE18Z2M		
YAE18Z3 BOX		6-8	.31	.29	.78	1.00	YAE18Z3		YAE18Z3M		
YAE18Z4 BOX		8-10	.36	.34	.83	1.08	YAE18Z4		YAE18Z4M		
YAE14Z2 BOX	16-14 MAX. INSUL. DIA. ACCOM.: (156) COLOR CODE: BLUE	4-6	.28	.26	.76	.90	YAE14Z2		YAE14Z2M	TFM WITH DFM9D1 DIE	3/16"
YAE14Z3 BOX		6-8	.31	.29	.78	1.00	YAE14Z3		YAE14Z3M		
YAE14Z4 BOX		8-10	.36	.34	.83	1.08	YAE14Z4		YAE14Z4M		
YAE12Z2 BOX	14-12 MAX. INSUL. DIA. ACCOM.: (180) COLOR CODE: GREEN	4-6	.28	.27	.90	1.04	YAE12Z2	MR833T-1 M8ND WITH N12HET-1 Y10D, Y10-22	YAE12Z2M	TFM WITH DFM7D1 DIE	21/64"
YAE12Z3 BOX		6-8	.31	.32	.96	1.16	YAE12Z3		YAE12Z3M		
YAE12Z4 BOX		8-10	.36	.35	1.00	1.23	YAE12Z4		YAE12Z4M		

• Not UL recognized.



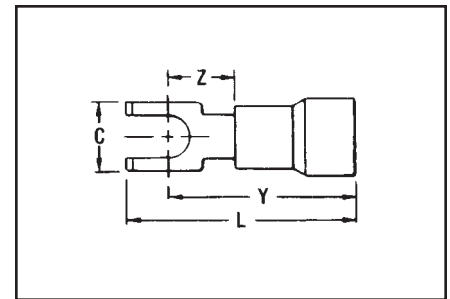
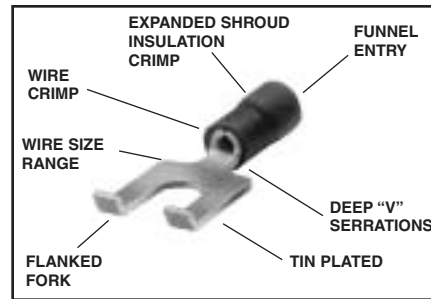
## TYPES TP-Z AND BA-EZ

### VINYLUG™

TERMINAL -  
POLYVINYLCHLORIDE  
INSULATED, FLANGED  
FORK TONGUE

600 VOLTS MAX. 105° C MAX

VINYLUG™ Type TP-Z is a variation of the Type TP and employs a flanged fork tongue for fast installation and security.



### Features and Benefits

- Flange fork tongue design.
  - ◊ Allows fast installation—screw only has to be loosened for termination.
- The flanges on the end of the fork terminal aid in preventing a slightly loose terminal from becoming fully disconnected from the screw.
  - ◊ Flanges make re-securing a loose terminal easier.

CATALOG NUMBER	WIRE RANGE	STU SIZE	DIMENSIONS				BULK CATALOG NUMBER	INSTALLATION TOOLING	TAPE MOUNTED CATALOG NO. 2000/Reel	INSTALLATION TOOLING	WIRE STRIP LENGTH
			C	L MAX	Y MAX	Z MIN					
TP16-2Z	22-16 MAX. INSUL. DIA. ACCOM.: .145 COLOR CODE: RED	1-2	.17	.78	.66	.23	BA16EZ2	PLIER TYPE: Y10-22  RATCHET TOOL: MR8-89-1 MR15	BA16EZ2M	TFM WITH DFM3D-1 DIE	13/64"
TP16-6Z		4-6	.28	.83	.66	.23	BA16EZ6		BA16EZ6M		
TP16-8Z		6-8	.31	.88	.69	.26	BA16EZ8		BA16EZ8M		
TP16-10Z		8-10	.41	.96	.75	.31	BA16EZ10		BA16EZ10M		
TP14-2Z	16-14 MAX. INSUL. DIA. ACCOM.: .180 COLOR CODE: BLUE	1-2	.17	.78	.66	.23	BA14EZ2		BA14EZ2M	TFM WITH DFM2D-1 DIE	13/64"
TP14-6Z		4-6	.28	.83	.66	.23	BA14EZ6		BA14EZ6M		
TP14-8Z		6-8	.31	.88	.69	.26	BA14EZ8		BA14EZ8M		
TP14-10Z		8-10	.41	.96	.75	.31	BA14EZ10		BA14EZ10M		
TP10-6Z	12-10 MAX. INSUL. DIA. ACCOM.: .260 COLOR CODE: YELLOW	4-6	.28	.99	.81	.26	BA10EZ6		* BA10EZ6M	TFM WITH DFM1D5 DIE	19/64"
TP10-8Z		6-8	.31	1.01	.81	.26	BA10EZ8		* BA10EZ8M		
TP10-10Z		8-10	.41	1.09	.81	.31	BA10EZ10	* BA10EZ10M			

\* 1000/Reel.

## TYPES TP-LF AND BA-EL

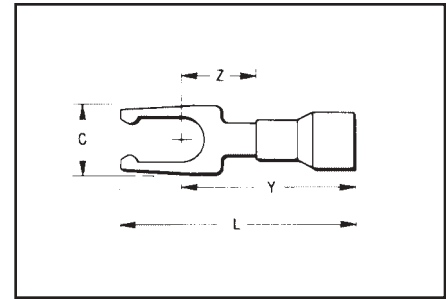
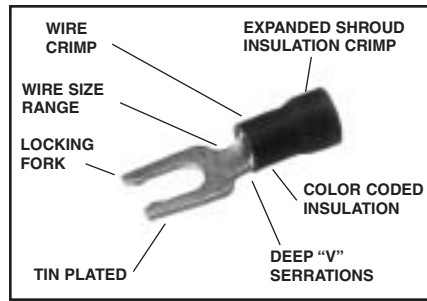
### VINYLU<sup>TM</sup>

B-34

TERMINAL -  
POLYVINYLCHLORIDE  
INSULATED,  
LOCKING FORK TONGUE

600 VOLTS MAX. 105° C MAX

Type TP-LF is a variation of the Type TP design and employs a locking fork tongue for fast installation and security.



### Features and Benefits

- Locking fork tongue design.
  - ◇ Allows fast installation—screw only has to be loosened for termination.
- Internal configuration of the fork.
  - ◇ Prevents the terminal from coming off the screw without applying a pulling force.
- Locking fork is made from a copper alloy.
  - ◇ Permits many installations while maintaining proper spring retention of forks.

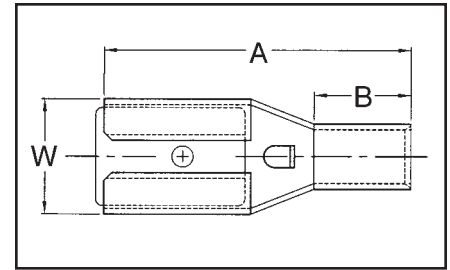
CATALOG NUMBER	WIRE RANGE	STUD SIZE	DIMENSIONS				BULK CATALOG NUMBER •	INSTALLATION TOOLING	TAPE MOUNTED CATALOG NO. 2000/Reel	INSTALLATION TOOLING	WIRE STRIP LENGTH	
			C	L MAX.	Y MAX.	Z MIN.						
TP16-6LF	22-16 MAX. INSUL.	4-6	.28	.80	.66	.23	BA16EL6	PLIER TYPE: Y10-22	BA16EL6M	TFM WITH DFM3D-1 DIE	13/64"	
TP16-8LF	DIA. ACCOM.: .145	6-8	.31	.86	.69	.26	BA16EL8		BA16EL8M			
TP16-10LF	COLOR CODE: Red	8-10	.41	.95	.75	.31	BA16EL10		BA16EL10M			
TP14-6LF	16-14 MAX. INSUL.	4-6	.28	.80	.66	.23	BA14EL6	RATCHET TOOL: MR8-89-1 MR15	BA14EL6M	TFM WITH DFM2D-1 DIE	13/64"	
TP14-8LF	DIA. ACCOM.: .180	6-8	.31	.86	.69	.26	BA14EL8		BA14EL8M			
TP14-10LF	COLOR CODE: Blue	8-10	.41	.95	.75	.31	BA14EL10		BA14EL10M			
TP10-6LF	12-10 MAX. INSUL.	4-6	.28	.95	.81	.26	BA10EL6	* BA10EL6M	TFM	WITH	19/64"	
TP10-8LF	DIA. ACCOM.: .260	6-8	.31	.98	.81	.26	BA10EL8					* BA10EL8M
TP10-10LF	COLOR CODE: Yellow	8-10	.41	1.07	.87	.31	BA10EL10					* BA10EL10M

• UL and CSA listed with MR8-89-1 and MR15.  
\* 1000/Reel.

### TYPE Q-F FINGRIP™

#### NON-INSULATED FEMALE QUICK DISCONNECTS

MATERIAL: TIN-PLATED BRASS



B-35



#### Features and Benefits

- Butted seam.
- Chamfered barrel opening.
  - ◊ Assures quick and easy wire insertion.
- Dimpled female socket detent.
  - ◊ Ensures firm grip.

### FEMALE BARE DISCONNECT TERMINAL

(Mates with Type Q-M male disconnects)

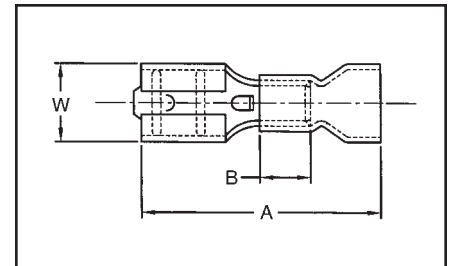
STANDARD CATALOG NO.	STD. PKG. QTY.	WIRE RANGE	NEMA TAB SIZE	DIMENSIONS			BULK CATALOG NO.	BULK QTY.	INSTALLATION TOOL*
				A	B	W			
Q18F18X02D	100	18-22	.187 × .020	0.58	0.17	0.23	Q18F18X02B	1000	MR20, Y10D
Q18F25X03D			.250 × .032	0.62	0.17	0.29	Q18F25X03B		
Q14F11X02D	100	14-16	.110 × .020	0.55	0.17	0.14	Q14F11X02B		
Q14F18X02D			.187 × .020	0.58	0.17	0.20	Q14F18X02B		
Q14F25X03D			.250 × .032	0.62	0.17	0.29	Q14F25X03B		
Q10F25X03D	50	10-12	.250 × .032	0.73	0.27	0.29	Q10F25X03B		

\* For UL listed applications consult BURNDY® factory.

### TYPE QP-F FINGRIP™

#### VINYL INSULATED FEMALE QUICK DISCONNECTS

MATERIAL: TIN-PLATED BRASS  
600 VOLTS MAX. 105° C MAX.



#### Features and Benefits

- Butted seam.
- Insulated connectors.
  - ◊ Eliminate the need for post installation insulation.
- Funnel entry barrel opening.
  - ◊ Assures quick and easy wire insertion.
- Dimpled female socket detent.
  - ◊ Ensures firm grip.

### FEMALE VINYL DISCONNECT TERMINAL

(Mates with Type QP-M male disconnects)

STANDARD CATALOG NO.	STD. PKG. QTY.	WIRE RANGE	NEMA TAB SIZE	DIMENSIONS			BULK CATALOG NO.	BULK PKG. QTY.	INSTALLATION TOOL*		
				A	B	W					
QP18F18X02D	100	18-22	.187 × .020	0.86	0.17	0.22	QP18F18X02B	1000	Y10D		
QP18F25X03D			.250 × .032	0.91	0.17	0.29	QP18F25X03B				
QP14F18X02D	100	14-16	.187 × .020	0.87	0.17	0.23	QP14F18X02B				
QP14F25X03D			.250 × .032	0.92	0.17	0.29	QP14F25X03B				
QP10F25X03D	50	10-12	.250 × .032	1.08	0.27	0.29	QP10F25X03B			500	

\* For UL listed applications consult BURNDY® factory.

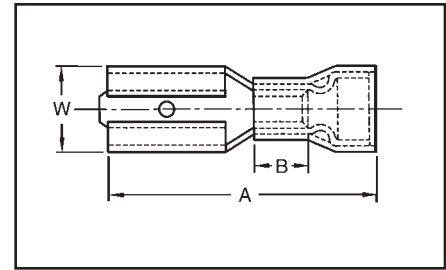


### TYPE QN-F FINGRIP™

#### NYLON INSULATED FEMALE QUICK DISCONNECTS

B-36

MATERIAL: TIN-PLATED  
BRASS  
300 VOLTS MAX. 105°C MAX.



#### Features and Benefits

- Sleeved barrel.
- Insulated connectors.
  - ◊ Eliminate the need for post installation insulation.
- Funnel entry barrel opening.
  - ◊ Assures quick and easy wire insertion.
- Dimpled female socket detent.
  - ◊ Ensures firm grip.



#### FEMALE NYLON DISCONNECT TERMINAL

(Mates with Type QN-M male disconnects)

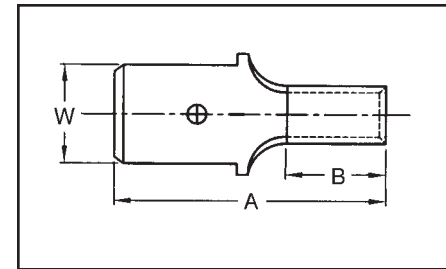
STANDARD CATALOG NO.	STD. PKG. QTY.	WIRE RANGE	NEMA TAB SIZE	DIMENSIONS			BULK CATALOG NO.	BULK PKG. QTY.	INSTALLATION TOOL*
				A	B	W			
QN18F18X02D	100	18-22	.187 × .020	0.86	0.17	0.22	QN18F18X02B	1000	Y10D
QN18F25X03D			.250 × .032	0.91	0.17	0.29	QN18F25X03B		
QN14F11X02D	100	14-16	.110 × .020	0.84	0.17	0.14	QN14F11X02B		
QN14F18X02D			.187 × .020	0.87	0.17	0.23	QN14F18X02B		
QN14F25X03D			.250 × .032	0.92	0.17	0.29	QN14F25X03B		
QN10F25X03D	50	10-12	.250 × .032	1.02	0.27	0.29	QN10F25X03B	500	

\* For UL listed applications consult BURNDY® factory.

### TYPE Q-M FINGRIP™

#### NON-INSULATED MALE QUICK DISCONNECTS

MATERIAL: TIN-PLATED  
BRASS



#### Features and Benefits

- Butted seam.
- Chamfered barrel opening.
  - ◊ Assures quick and easy wire insertion.
- Mates with dimpled female socket detent.
  - ◊ Ensures firm grip.



#### MALE BARE DISCONNECT TERMINAL

(Mates with Type Q-F female disconnects)

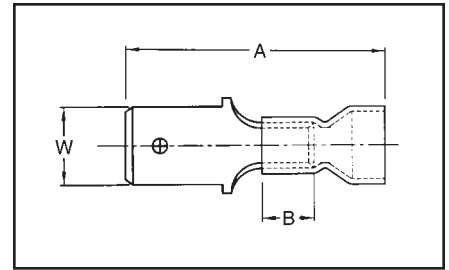
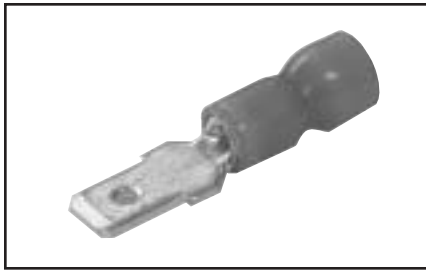
STANDARD CATALOG NO.	STD. PKG. QTY.	WIRE RANGE	NEMA TAB SIZE	DIMENSIONS			BULK CATALOG NO.	BULK PKG. QTY.	INSTALLATION TOOL*
				A	B	W			
Q18M18X02D	100	18-22	.187 × .020	0.55	0.17	0.19	Q18M18X02B	1000	MR20, Y10D
Q18M25X03D			.250 × .032	0.67	0.17	0.25	Q18M25X03B		
Q14M18X02D	100	14-16	.187 × .020	0.55	0.17	0.19	Q14M18X02B		
Q14M25X03D			.250 × .032	0.67	0.17	0.25	Q14M25X03B		

\* For UL listed applications consult BURNDY® factory.

### TYPE QP-M FINGRIP™

#### VINYL INSULATED MALE QUICK DISCONNECTS

MATERIAL: TIN-PLATED  
BRASS  
600 VOLTS MAX. 105° C MAX.



B-37

#### Features and Benefits

- Butted seam.
- Funnel entry barrel opening.
  - ◊ Assures quick and easy wire insertion.
- Mates with dimpled female socket detent.
  - ◊ Ensures firm grip.

#### MALE VINYL DISCONNECT TERMINAL

(Mates with Type QP-F female disconnects)

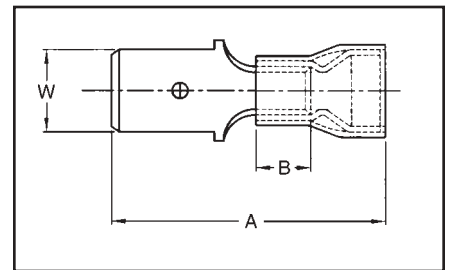
STANDARD CATALOG NO.	STD. PKG. QTY.	WIRE RANGE	NEMA TAB SIZE	DIMENSIONS			BULK CATALOG NO.	BULK PKG. QTY.	INSTALLATION TOOL*
				A	B	W			
QP18M18X02D	100	18-22	.187 × .020	0.83	0.17	0.19	QP18M18X02B	1000	Y10D
QP18M25X03D			.250 × .032	0.95	0.17	0.25	QP18M25X03B		
QP14M18X02D	100	14-16	.187 × .020	0.83	0.17	0.19	QP14M18X02B		
QP14M25X03D			.250 × .032	0.95	0.17	0.25	QP14M25X03B		
QP10M250D	50	10-12	.250 × .032	1.12	0.17	0.25	—	—	

\* For UL listed applications consult BURNDY® factory.

### TYPE QN-M FINGRIP™

#### NYLON INSULATED MALE QUICK DISCONNECTS

MATERIAL: TIN-PLATED  
BRASS  
300 VOLTS MAX. 105° C MAX.



#### Features and Benefits

- Sleeved barrel.
- Funnel entry barrel opening.
  - ◊ Assures quick and easy wire insertion.
- Mates with dimpled female socket detent.
  - ◊ Ensures firm grip.

#### MALE NYLON DISCONNECT TERMINAL

(Mates with Type QN-F female disconnects)

STANDARD CATALOG NO.	STD. PKG. QTY.	WIRE RANGE	NEMA TAB SIZE	DIMENSIONS			BULK CATALOG NO.	BULK PKG. QTY.	INSTALLATION TOOL*
				A	B	W			
QN18M18X02D	100	18-22	.187 × .020	0.82	0.17	0.19	QN18M18X02B	1000	Y10D
QN18M25X03D			.250 × .032	0.91	0.17	0.25	QN18M25X03B		
QN14M18X02D	100	14-16	.187 × .020	0.84	0.17	0.19	QN14M18X02B		
QN14M25X03D			.250 × .032	0.91	0.17	0.25	QN14M25X03B		
NQ10M250D	50	10-12	.250 × .032	1.12	0.17	0.25	—	—	

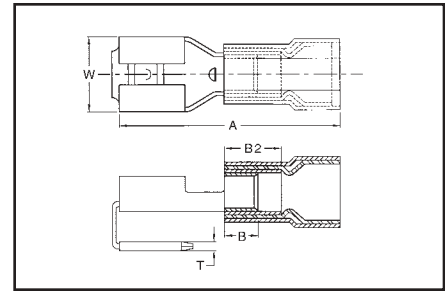
\* For UL listed applications consult BURNDY® factory.

### TYPES PGP, AND PGN FINGRIP™

#### MALE/FEMALE COMBINATION QUICK DISCONNECTS

B-38

MATERIAL: TIN-PLATED BRASS



#### Features and Benefits

- Sleeved barrel.
- Combination connector.
  - ◇ Allows for more than one connection to a circuit.
- Funnel entry barrel opening.
  - ◇ Assures quick and easy wire insertion.
- Dimpled female socket detent.
  - ◇ Ensures firm grip.



#### VINYL COMBINATION DISCONNECT TERMINAL

600 VOLTS MAX. 105° C MAX.

STANDARD CATALOG NO.	STD. PKG. QTY.	WIRE RANGE	NEMA TAB SIZE	DIMENSIONS			BULK CATALOG NO.	BULK PKG. QTY.	INSTALLATION TOOL*
				A	B	W			
PGP1825X03D	100	18-22	.250 × .032	0.91	0.17	0.30	PGP1825X03B	1000	Y10D
PGP1425X03D	100	14-16	.250 × .032	0.91	0.17	0.30	PGP1425X03B	1000	

#### NYLON COMBINATION DISCONNECT TERMINAL

300 VOLTS MAX. 105° C MAX.

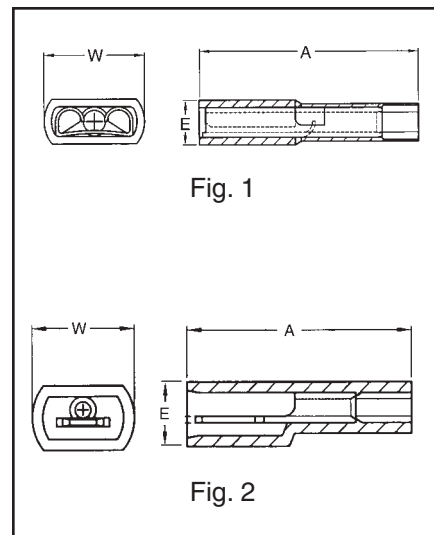
STANDARD CATALOG NO.	STD. PKG. QTY.	WIRE RANGE	NEMA TAB SIZE	DIMENSIONS			BULK CATALOG NO.	BULK PKG. QTY.	INSTALLATION TOOL*
				A	B	W			
PGN1825X03D	100	18-22	.250 × .032	0.90	0.17	0.30	PGN1825X03B	1000	Y10D
PGN1425X03D	100	14-16	.250 × .032	0.90	0.17	0.30	PGN1425X03B	1000	

\* For UL listed applications consult BURNDY® factory.

### TYPES FQN-F AND FQN-M FINGRIP™

#### NYLON FULLY INSULATED FEMALE AND MALE QUICK DISCONNECTS

MATERIAL: TIN-PLATED BRASS  
300 VOLTS MAX. 105° C MAX.



#### Features and Benefits

- Fully insulated connectors.
  - ◇ Eliminate the need for post installation insulation.
- Funnel entry barrel opening.
  - ◇ Assures quick and easy wire insertion.
- Dimpled female socket detent.
  - ◇ Ensures firm grip.

B-39

#### FULLY INSULATED FEMALE NYLON DISCONNECT TERMINAL (Fig. 1)

STANDARD CATALOG NO.	STD. PKG. QTY.	WIRE RANGE	NEMA TAB SIZE	DIMENSIONS		BULK CATALOG NO.	BULK PKG. QTY.	INSTALLATION TOOL*
				A	W			
FQN18F25X03D	50	18-22	.250 × .032	0.98	0.40	FQN18F25X03B	1000	Y10D
FQN14F25X03D	50	14-16	.250 × .032	0.96	0.40	FQN14F25X03B	1000	
FQN10F25X03D	25	10-12	.250 × .032	0.99	0.41	FQN10F25X03B	500	

#### FULLY INSULATED MALE NYLON DISCONNECT TERMINAL (Fig. 2)

STANDARD CATALOG NO.	STD. PKG. QTY.	WIRE RANGE	NEMA TAB SIZE	DIMENSIONS		BULK CATALOG NO.	BULK PKG. QTY.	INSTALLATION TOOL*
				A	W			
FQN18M25X03D	50	18-22	.250 × .032	1.05	0.48	FQN18M25X03B	1000	Y10D
FQN14M25X03D	50	14-16	.250 × .032	1.03	0.48	FQN14M25X03B	1000	
FQN10M25X03D	25	10-12	.250 × .032	1.03	0.48	FQN10M25X03B	500	

\* For UL listed applications consult BURNDY® factory.

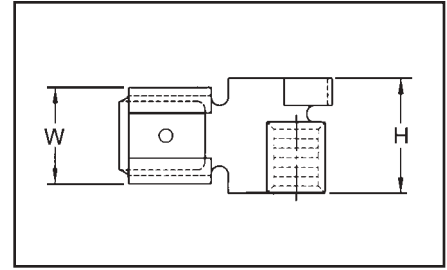
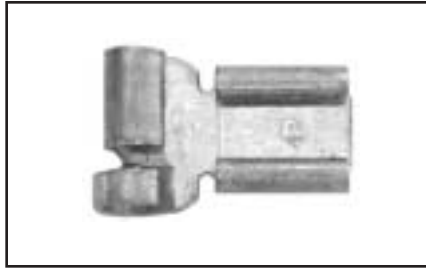
\*\* For Mylar tape reels consult BURNDY® factory.

## TYPE FL FINGRIP™

### FLAG-STYLE FEMALE QUICK DISCONNECT

MATERIAL: TIN-PLATED  
BRASS

B-40



#### Features and Benefits

- Dimpled female socket detent.
- ◇ Ensures firm grip.

### FEMALE BARE DISCONNECT TERMINAL

STANDARD CATALOG NO.	STD. PKG. QTY.	WIRE RANGE	NEMA TAB SIZE	DIMENSIONS			BULK CATALOG NO.	BULK PKG. QTY.	INSTALLATION TOOL
				A	B	W			
FL1825X03D	100	18-22	.250 × .032	0.67	0.17	0.25	FL1825X03B	1000	BH12
FL1425X03D	100	14-16	.250 × .032	0.67	0.17	0.25	FL1425X03B	1000	
FL1025X03D	50	10-12	.250 × .032	0.67	0.17	0.25	FL1025X03B	500	BH4A3



## UNINSULATED SPLICES

Burndy manufactures several designs of uninsulated butt splices. Each type is designed to meet specific application requirements and provide a high quality, electrical splice connection that is easily installed. The following features and benefits apply to all Burndy uninsulated splices.

### Features and Benefits

- Manufactured from seamless tubing.
  - ◇ A high quality design with no seams to split.
- Electrolytic copper.
  - ◇ Provides maximum conductivity, low resistance and ductility for excellent crimp forming properties.
- Electro-tin plated.
  - ◇ Provides durable long lasting resistance to corrosion.
- Positive center wire stops.
  - ◇ Provides proper depth of wire insertion.
- Marked with wire size.
  - ◇ Provides easy wire size identification.
- The HYLINK™ splice connectors have inspection holes.
  - ◇ Provides easy visual inspection for proper wire insertion.

B-41

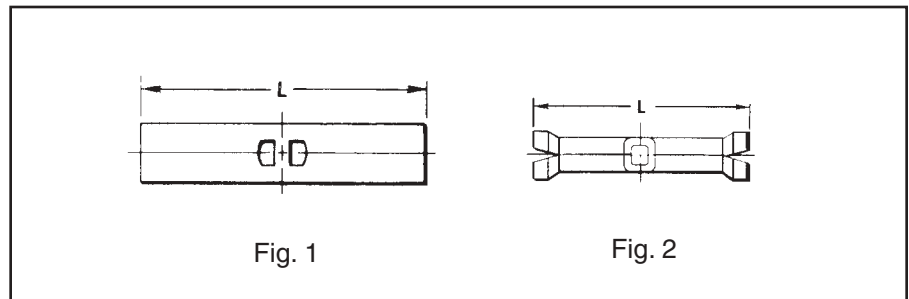
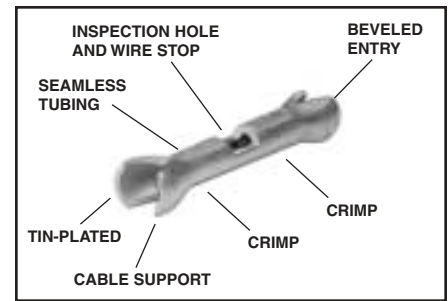
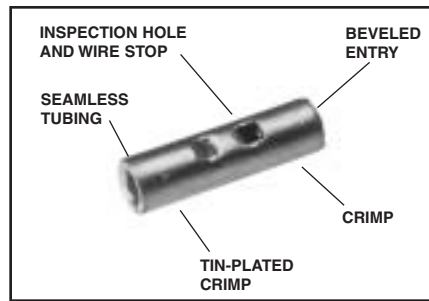
## TYPES YSV, YSV-H AND YSV-L

### HYLINK™

#### UNINSULATED BUTT SPLICE 600 VOLTS MAXIMUM

HYLINK™ type YSV seamless splice connector is used to splice stranded and solid copper conductors in virtually all heavy duty industrial and general purpose applications.

The type YSV-H HYLINK™ seamless splice connector has the added benefit of an insulation support and cable strain relief.



CATALOG NUMBER	WIRE RANGE CODE AWG. STR. AND SOL. AIRCRAFT-AN	FIG	DIMENSIONS		BULK CAT. NO.	INSTALLATION TOOLING HYTOOL	WIRE STRIP LENGTH
			L	MAX. DIA.			
YSV18 BOX	22-18	1	.62	--	YSV18	NON-RATCHET: Y10D, Y1022 RATCHET: MR20, Y8MRB-1, MR8-9Q*, MR8-G98	1/4"
YSV18-H BOX	str. & sol.	2	.89	.120	YSV18-H		1/4"
YSV14 BOX	20-14 str.	1	.64	--	YSV14		5/16"
YSV14-H BOX	20-12 sol.	2	.94	.150	YSV14-H		5/16"
YSV10 BOX	12-10	1	.75	--	YSV10		5/16"
YSV10-H BOX	str. & sol.	2	1.06	.192	YSV10-H		7/16"
YSV9C-L BOX	9 str.	1	.75	--	YSV9C-L	NON-RATCHET: MY28 MY29-3, MY29-11 RATCHET: Y8MRB-1† MR8-9Q*, Y2MR▲	5/16"
YSV8C-L BOX	8 str.	1	1.00	--	YSV8C-L		7/16"

\* Remove stop plate.  
 ▲ Y2MR for 8 str. only  
 † Use #10 groove  
 Use MR8 series tools for (-H) series.

## TYPE YSV-L

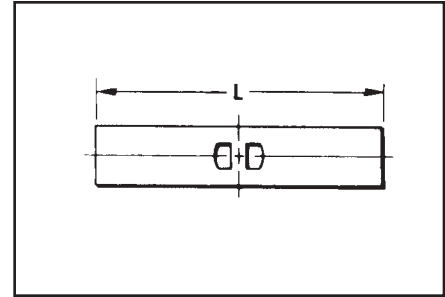
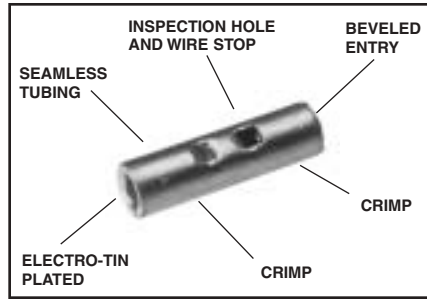
### HYLINK™

UNINSULATED BUTT SPLICE  
600 VOLTS MAXIMUM

B-42

#8 THROUGH 4/0 COPPER

HYLINK™ type YSV-L seamless splice connector is used to splice Type AN aircraft cables plus commercial stranded and solid AWG conductors. Suitable for aircraft, light duty industrial and general purpose applications.



CATALOG NUMBER	WIRE RANGE AIRCRAFT-AN" COMM'L-AWG. STR. & SOL.	DIMENSIONS L	BULK CAT. NO.	INSTALLATION TOOLING				Y34PAWIRE STRIP LENGTH
				RATCHET	HYTOOL **	HYPRESS• Y35, Y35BH, Y39, Y39BH		
						NEST	INDENTOR	
YSV8C-L BOX	8	1.00	YSV8C-L		TYPE AH AIRCRAFT CABLE MY28 ALL OTHERS MY29-3 MY29-11 1 CRIMP	UV8L-1	Y34PL	7/16"
YSV6C-L BOX	6	1.12	YSV6C-L	Y2MR, MR4C		UV6L	Y34PLA	1/2"
YSV4C-L BOX	4	1.12	YSV4C-L	Y2MR, MR4C		UV4L		5/8"
YSV2C-L BOX	2	1.41	YSV2C-L	Y2MR		UV2L		5/8"
YSV1C-L BOX	1	1.46	YSV1C-L	--		UV1L	5/8"	
YSV25-L BOX	1/0	1.53	YSV25-L	--		UV25L	Y34PA	11/16"
YSV26-L BOX	2/0	1.78	YSV26-L	--		UV26L		13/16"
YSV27-L BOX	3/0	1.81	YSV27-L	--		UV27L		13/16"
YSV28-L BOX	4/0	1.94	YSV28-L	--		UV28L		7/8"

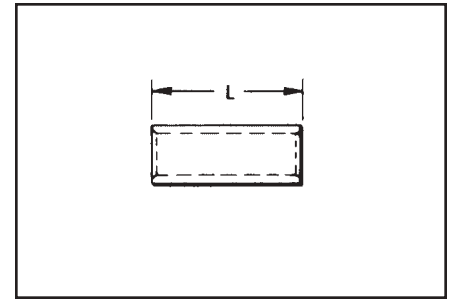
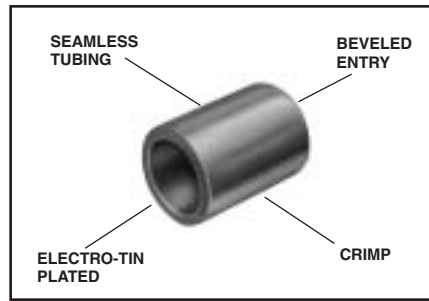
\* Remove stop plate  
 • Use Y35P3 Indentor Adaptor.  
 \*\* Bench Mount Adaptor - Cat. No. BMY-BCH-MT is available for Type MY HYTOOLS™.

### TYPE YSM

#### HYLINK™

#### UNINSULATED PARALLEL SPLICE

HYLINK™ type YSM seamless parallel splice connector permits wires to be laid parallel inside the connector and spliced together with Burndy's compression HYTOOL™. Each YSM connector accommodates a wide combination of round, square, and rectangular copper conductors that have a total combined circular mil area listed in the table below. The conductors to be spliced must physically fit within title splice without being forced.



B-43

CATALOG NUMBER	CIRCULAR MIL. RANGE		DIMENSIONS	INSTALLATION TOOLING				WRE STRIP LENGTH	
	MIN.	MAX.		RATCHET	MECHANICAL HYTOOL	HYPRESS Y35BH, Y39BH*			
			L			NEST	INDENTOR		
YSM18	300	1,909	.25	MR8-9Q*	—	—	—	5/16"	
YSM14	477	4,107	.25	MR8-9Q*	—	—	—	5/16"	
YSM10	4,107	10,380	.36	MR8-9Q*, MR4CQ	—	—	—	7/16"	
YSM8C	6,088	16,864	.41	MR4CQ Y2MR	MY29-11 OR MY28 (1) CRIMP	UV8L-1	—	1/2"	
YSM6C	10,380	26,813	.44			UV6L	—	1/2"	
YSM4C	26,813	42,613	.50	—		Y29PQ	9/16"		
YSM2C	42,613	66,832	.62	Y2MR		—	UV2L	11/16"	
YSM1C	66,832	81,807	.62	—		—	UV1L	11/16"	
YSM25	81,807	104,110	.69	—		—	UV25L	Y29PQ-6	3/4"
YSM26	104,110	133,650	.81	—		—	UV26L		7/8"
YSM27	133,650	167,332	.81	—		—	UV27L		7/8"
YSM28	167,332	211,954	.88	—		—	UV28L	—	15/16"

- \* Remove stop plate.
- Use Y35P indentor adapter, with Y35BH and Y39BH HYPRESSES.

Wire Size	Area Cir. Mils.	Solid Wire Dia. (In.)	Concentric Str. Max. Dia. (In.)	Flex. Bunch or Rope Lay Dia. (In Approx.)
30	100.5	.010003	.012	
29	126.7	.01126	-	
28	159.8	.01264	.015	
27	201.5	.01420	-	
26	254.1	.01594	.019	
25	320.4	.01790	-	
24	404.0	.02010	.024	
23	509.5	.02257	-	
22	642.4	.02535	.030	
21	810.1	.02845	-	
20	1022	.03196	.038	
19	1288	.03589	-	
18	1624	.04030	.0460	
17	2048	.04526	-	
16	2583	.05082	.0585	
15	3257	.05707	-	
14	4107	.06408	.0735	

Wire Size	Area Cir. Mils.	Solid Wire Dia. (In.)	Concentric Str. Max. Dia. (In.)	Flex. Bunch or Rope Lay Dia. (In Approx.)
13	5178	.07196	-	-
12	6530	.08081	.0931	.101
11	8234	.09074	-	-
10	10380	.1019	.117	.126
9	3090	.1144	.132	.146
8	16510	.1285	.148	.157-.162
7	20820	.1433	.166	.179-.196
6	26250	.1620	.186	.207-.215
5	33100	.1819	.209	.235-.240
4	41740	.2043	.235	.263-.269
3	52640	.2294	.264	.219-.305
2	66370	.2576	.297	.319-.337
1	83690	.2893	.333	.367-.376
1/0	105500	.3249	.374	.441-.423
2/0	133100	.3648	.420	.500-.508
3/0	167800	.4096	.472	.549-.576
4/0	211600	.4600	.530	.613-.645

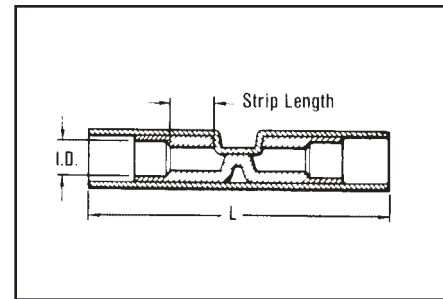
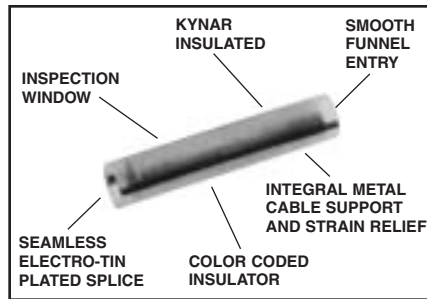
## TYPES YSES-K

### INSULINK™

RADIATION RESISTANT  
INSULATED BUTT SPLICE

POLYVINYLIDENE FLOURIDE  
(PVF<sub>2</sub>) INSULATED

200 MEGARADS - 60° C  
THROUGH 150° C, 600 VOLTS



The type YSES-K radiation resistant KYNAR® insulated splices are suitable for class 1E applications plus non critical nuclear associated applications. The splice is manufactured from pure electrolytic copper seamless tubing which eliminates potential splitting of seams. A color code stripe is used for wire size identification and a window is provided for inspection of proper wire insertion.

CATALOG NUMBER	WIRE RANGE	COLOR STRIPE	DIMENSIONS MAX. INSUL. DIA. ACCOM.	L MAX.	INSTALLATION TOOLING	WIRE STRIP LENGTH
YSES18K	22-18	RED	.112	1.00	RATCHET TOOL: MR10G8* RED GROOVE CALIBRATION GAUGE: PG-373-1 CRIMP ID. MARK: (1) SMALL DOT	3/16"
YSES14K	16-14	BLUE	.153	1.00	RATCHET TOOL: MR10G8* BLUE GROOVE CALIBRATION GAUGE: PG-371-1 CRIMP ID. MARK: (2) SMALL DOT	3/16"
YSES10K	12-10	YELLOW	.210	1.38	RATCHET TOOL: MR10G8* YELLOW GROOVE CALIBRATION GAUGE: PG-372-1 CRIMP ID. MARK: (1) LARGE DOT	7/16"

\* Remove terminal locator from tool when installing INSULINK™ splices.  
KYNAR® is the registered trademark for Pennwalt Corp. for Polyvinylidene Flouride (PVF<sub>2</sub>)

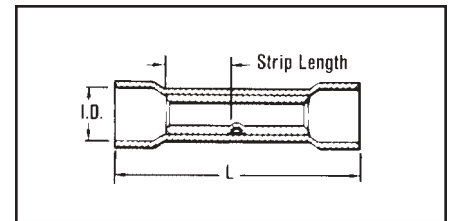
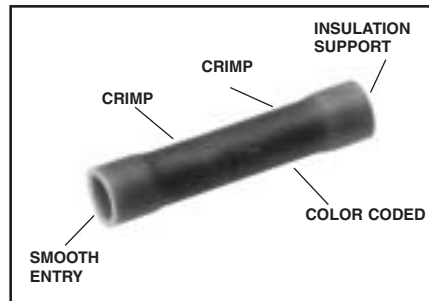
### TYPES SP AND BS

#### VINYLINK™

SPLICE,  
POLYVINYLCHLORIDE-  
INSULATED

600 VOLTS, 105° C

The type SP VINYLINK™ is a PVC insulated seamless butt splice. Type SP VINYLINK™ is designed to accommodate a broad range of 600 volt cables.



B-45

#### Features and Benefits

- Manufactured from seamless electrolytic copper tubing.
  - ◊ Provides maximum conductivity and tensile strength, in a high quality design with NO seams to split.
- Funnel entry.
  - ◊ Provides easy wire insertion.
- Electro-tin plated.
  - ◊ Provides durable long lasting resistance to corrosion.
- Expanded insulation support.
  - ◊ Lower inventory requirements.
- Red wire range of 22-16.
  - ◊ Lower inventory requirements.
- Vinyl insulator.
  - ◊ Economical means of providing high dielectric values and cable insulation support.

CATALOG NUMBER	WIRE RANGE	COLOR CODE	BULK CAT NO.	DIMENSION (INCHES)		INSTALLATION TOOLING	WIRE STRIP LENGTH
				L MAX. INSUL.	MAX. DIA.		
SP16	22-16	RED	BS16	1.00	.145	NON-RATCHET: Y10-22, Y10D RATCHET: MR8-9-1, MR15	1/4"
SP14	16-14	BLUE	BS14	1.00	.180		1/4"
SP10	12-10	YELLOW	BS10	1.23	.260		21/64"

### INSULATED SPLICES

BURNDY® manufactures several designs of insulated butt splices. Each type is designed to meet specific application requirements and provide a high quality electrically pre-insulated splice that is easily installed. The following features and benefits apply to all BURNDY® pre-insulated butt splices.

### Features and Benefits

- Manufactured from seamless tubing.
  - ◇ A high quality design with no seams to split.
- Pure electrolytic copper.
  - ◇ Provides maximum conductivity, low resistance and ductility for excellent crimp forming properties.
- Electro-tin plated.
  - ◇ Provides durable long-lasting resistance to corrosion.
- Positive center wire stops.
  - ◇ Provides for proper depth of wire insertion.
- Color-coded in red, blue and yellow.
  - ◇ Provides easy wire size identification.
- Transparent color-coded nylon insulation.
  - ◇ Provides easy visual inspection of wire insertion.

B-46

### TYPES SN AND YSE-HN

#### INSULINK™

BUTT SPLICE, NYLON-INSULATED

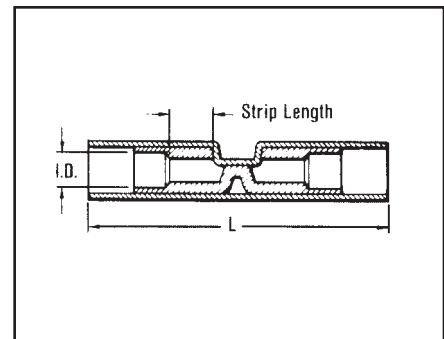
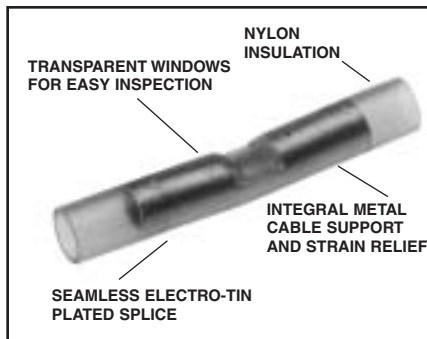
600 VOLTS MAXIMUM,  
105° C MAXIMUM

The type SN INSULINK™ is a high quality nylon-insulated butt splice designed to meet heavy duty application requirements.

Meets the functional requirements of MIL-T-7928 (ASG) and conforms to the requirements of NAS1388.



600 VOLTS, 105° C  
(1000 VOLTS, MAX. INSIDE SIGN OR FIXTURE)



### Features and Benefits

- Manufactured from one-piece tin-plated seamless copper tubing with an integral barrel/insulation grip.
  - ◇ Provides maximum tensile strength, plus excellent cable support and strain relief and eliminates failures due to vibration.
- Smooth funnel entry.
  - ◇ Provides easy wire insertion.
- Window and transparent color-coded nylon insulation.
  - ◇ Provides easy visual inspection for proper wire insertion.
- Window position locator for full cycle ratchet tool crimp.
  - ◇ Provides proper tool/connector alignment for correct crimp.
- Nylon insulation offers high dielectric strength and stability in oily environmental conditions.
  - ◇ Maintains a high quality connection in demanding applications.
- The nylon is locked into position.
  - ◇ The connector will not move.

CATALOG NUMBER	WIRE RANGE	COLOR CODE	BULK CAT NO.	DIMENSIONS		INSTALLATION TOOLING	WIRE STRIP LENGTH
				L MAX. INSUL.	MAX. DIA.		
SN18	22-18	RED	YSE18HN	1.25	.115	PLIER: Y10D RATCHET: MR8-85, MR18	15/64"
SN14	16-14	BLUE	YSE14HN	1.25	.150		7/32"
SN10	12-10	YELLOW	YSE10HN	1.64	.220		3/8"

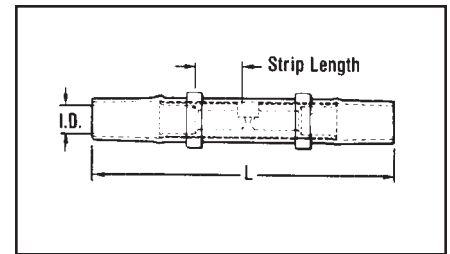
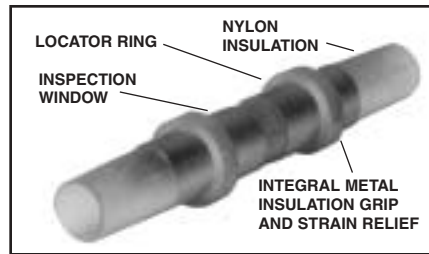
## TYPES SNM AND YSES

### INSULINK™

BUTT SPLICE, NYLON INSULATED

MS25181, CLASS 1 SPLICE  
300 VOLTS, 105° C

The type SNM INSULINK™ is a high quality nylon insulated butt splice designed to meet military MS25181, class 1 requirements.



B-47

### Features and Benefits

- Manufactured from tin plated, seamless copper tubing with an integral barrel/insulation grip.
  - ◇ Provides maximum tensile strength, plus excellent cable support and strain relief.
- Smooth funnel entry.
  - ◇ Provides easy wire insertion.
- Transparent nylon insulation.
  - ◇ Permits easy wire inspection.
- External ring locator.
  - ◇ Provides proper tool alignment for correct crimp.

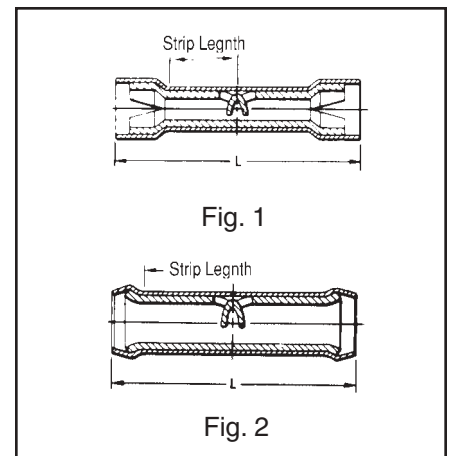
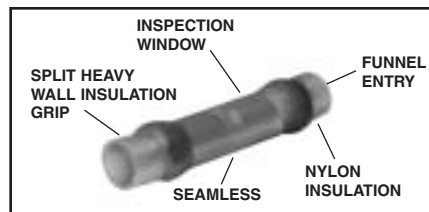
CATALOG NUMBER	WIRE RANGE	COLOR CODE	BULK CAT NO.	MS25181 DASH NO.	DIMENSIONS		INSTALLATION TOOLING	WIRE STRIP LENGTH
					L MAX.	MAX. DIA. INSUL.		
SNM18	22-18	RED	YSES18-1	-1	1.53	.120	PLIER Y 10D RATCHET: MR8-83 OR MR8-85 MS25037 TOOL	7/32"
SNM14	16-14	BLUE	YSES14-2	-2	1.53	.150		7/32"

## TYPES YSE BOX, YSE-H BOX, YSE, YSES AND YSE-H

### INSULINK™

600 VOLTS, 105° C

The types YSE and YSE-H INSULINKS™ are high quality nylon insulated butt splices designed for splicing aircraft and commercial flexible cables.



### Features and Benefits

- Manufactured from tin plated, seamless electrolytic copper tubing with integral barrel/insulation grip.
  - ◇ Provides maximum conductivity and tensile strength, plus excellent cable support and strain relief.
- Split heavy wall insulation grip.
  - ◇ Provides stronger insulation grip and strain relief.
- Smooth funnel entry.
  - ◇ Provides easy wire insertion.
- Transparent nylon insulation.
  - ◇ Permits easy wire inspection.



600 VOLTS 105°C

WIRE RANGE CATALOG NUMBER	FIG	WIRE CODE AWG. AIRCRAFT AN	COLOR CODE	BULK CAT NO.	DIMENSIONS		INSTALLATION TOOLING	WIRE STRIP LENGTH
					L MAX. INSUL.	MAX. DIA.		
YSE18H-BOX	1	22-18	RED	YSE18H	1.20	.115	Y10D RATCHET: MR8-33S-1	9/32"
YSE14H-BOX	1	16-14	BLUE	YSE14H	1.36	.150		11/32"
YSE10-BOX	2	12-10	YELLOW	YSE10	1.15	.209		23/64"

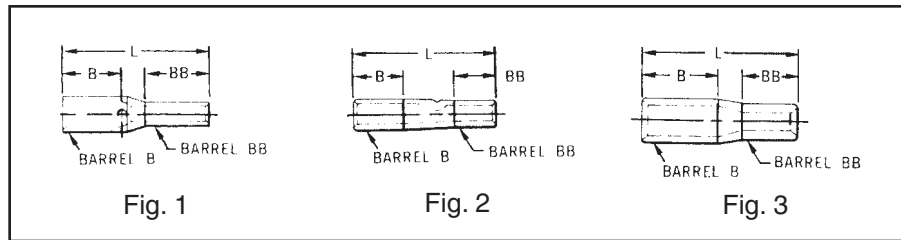
## TYPES YSV, YRV-L

### HYREDUCER™

#### REDUCER BUTT SPLICE

B-48

The HYREDUCER™ is a connector for splicing two different size wires. The larger conductor is inserted first and butts against the center of the connector where the smaller barrel begins. Constructed of pure electrolytic copper tubing for maximum conductivity, tin plated to resist corrosion, the HYREDUCER™ accommodates a wide range of cable sizes.



Dimensional information may be found in Table 1. Table 2 is a comprehensive tooling index for these connectors.

TABLE 1

BULK CATALOG NUMBER	TOTAL WIRE RANGE	FIG. NO.	B BARREL*		TOOL INDEX	BB BARREL*		TOOL INDEX	"L" MAX.
			WIRE SIZE	B DIM.		WIRE SIZE	BB DIM.		
YSV1418	22-14	1	20-14	.27	1	22-18	.27	2	.64
YSV1214-G1	16-12	2	12	.31	4	16-14	.27	1	.83
YSV1014-G2	20-10	2	12-10	.31	4	20-14	.27	1	.83
YRV8CV14-L	20-8	3	8	.44	5	20-14	.39	1	t
YRV8CV10-L	12-8	3	8	.44	5	12-10	.53	4	1.18
YRV6CV10-L	12-6	3	6	.50	6	12-10	.53	4	1.28
YRV6CV8C-L	8-6	3	6	.50	6	8	.53	5	1.21
YRV4CV6C-L	6-4	3	4	.50	7	6	.54	6	1.27
YRV2CV6C-L	6-2	3	2	.62	8	6	.51	6	1.63

\* B and BB dimensions are wire strip lengths.

TABLE 2 TOOL INDEX

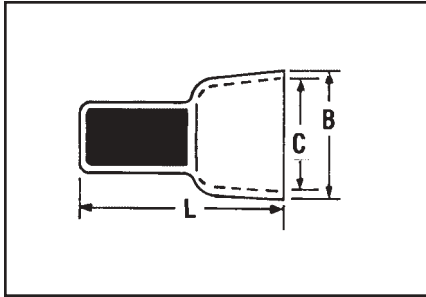
INDEX NUMBER	HAND TOOLS	TOOLS WITH DIES	
		Y29NC	
1	MR8G98 Y8MRB-1 MR8-9Q† MR20	-	
2	MR8G98 Y8MRB-1 MR8-9Q† MR20	-	
4	MR8G98 Y8MRB-1 MR8-9Q† MR20	-	
5	Y8MRB-1 MY28 MR4C Y2MR	NEST	INDENTOR
		DV8L-1*	Y29PL
6	MY28 Y2MR MR4C	DV6L	Y29PL
7	MY28 Y2MR MR4C	DV4L	Y19PL
8	Y2MR MY28	DV2L	Y29PL

\* For aircraft applications (flexible cables).



## BURCAP TYPES YQE, RK

### PIGTAIL SPLICE, NYLON-INSULATED



Rated at 600 volts for building wire and 1000 volts for fixtures and signs, the BURCAP is designed to splice a wide range of different cable sizes.

B-49

CATALOG NUMBER	WIRE COMBINATIONS	TOTAL AREA CIRCULAR MILS	DIMENSIONS IN INCHES			INSTALLATION TOOLS	WIRE STRIP LENGTH		
			L	B	C	DIE SET			
						M8ND Y8ND			
YQE-91†	1 #16 & 1 #18	4,205	.76	.30	.24	N150WT	5/16		
	2 #18	3,250							
*RK141-2	RK 141ABOX 100	500 5,180	.607 (16,4)	.311 (7,9)	.269 (8,6)				
	22 20 18 16 18 16 14 12								
	7							1	1
	6 1							2	1
*RK142-2	RK 142ABOX 100	2,400 13,100	.722 (18,3)	.440 (11,2)	.384 (9,8)				
	5 1 1							3	1
	4 2							1	1
	4 1 1							2	1
	3 2	3	1	1					
	3	2	1	1					
	3	1	2	1					
	2 3	1	1	1					
	2	2	2	1					
	2	1	3	1					
	1 4	2	2	1					
	1	2		2					
	1		1	1					
	4		2	1					
	3 1	3	1						
	2 2	4	1						
	2	1	1	2					
	1 2	2	2						
	1	1	3	2					
	3		2						
	2	1	3						
			3						
	5								

NOTE: \* Convenience Package. For Box quantity, order RK141ABOX100 and RK142ABOX100 respectively.

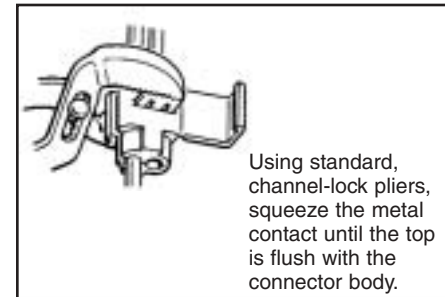
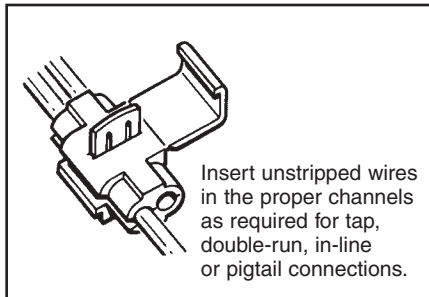
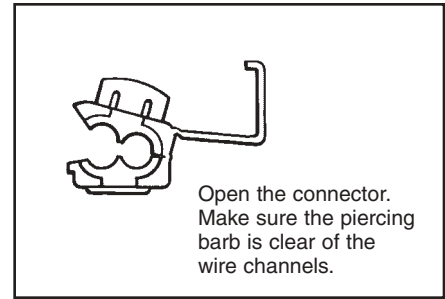
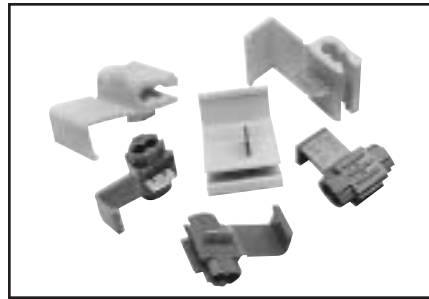
† This item is UL Listed

## TYPE TS QIKTAP™

### SELF-TAPPING INSULATION DISPLACEMENT CONNECTORS (IDC)

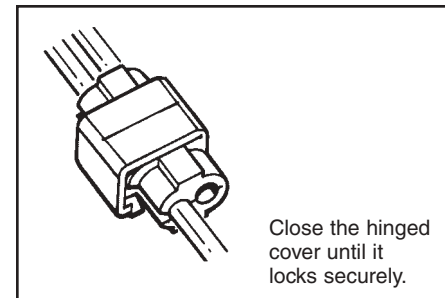
B-50

The QIKTAP™ Connector offers a quick and easy way to make tap-splices, in-line splices, pass-through connections and pigtail splices.



### Features and Benefits

- Connector Housing is made of polypropylene 2029.
  - ◇ Rated at 94V2 flame retardancy.
- Color-Coded.
  - ◇ Ease of installation.
- Easy Installation—Use ordinary channel-lock pliers.
  - ◇ Quick, reliable, pre-insulated splices without stripping, twisting and/or soldering.



CATALOG NUMBER	CONDUCTOR SIZE RANGE	MAX. COND. INSULATION DIA.	COLOR CODE	BULK CAT.#
TS18D*	22-18 STR CU.	.140	RED	TS18B*
TS14D	16-14 STR.CU.	.140	BLUE	TS14B
TS10D	12-10 STR CU.	.190	YELLOW	TS10B

\* Not UL Listed