

4801GLI -- Industrial Grade Toggle Switch

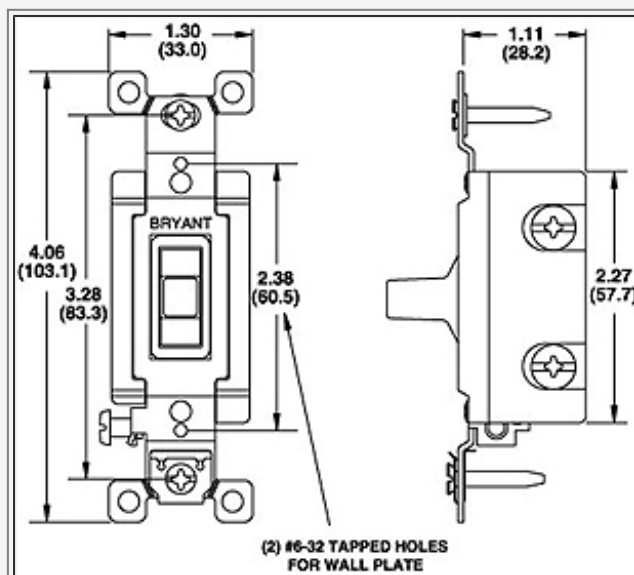


Single Pole, 15A, 120/277V AC, Back & Side Wired,
Glow Handle, Ivory

Product Specifications

Type	General Purpose AC
Grade	Industrial
Actuator	Toggle
Actuator Type	Glow Handle
Switch Contact Type	Single Pole
Amperage	15A
Amperage/Voltage Rating	120/277V AC
Packaging	Single
Color	Ivory
Wiring Style	Back & Side Wired
Termination Type	Combo Philips/Slotted/Robertson
Base Material	Thermoset.
Face Material	Thermoset, Color coded by voltage.
Toggle/Actuator Material	Nylon.
Terminals	High Performance Copper Alloy.
Mounting Yoke	Brass and Nickel Plated Steel.
Contacts	Silver Cadmium Oxide.
Movable Contact Arm	High Performance Copper Alloy.
Rocker	Thermoplastic Elastomer.
Ground Terminal	Brass and Nickel Plated Steel.
Terminal Screws	Brass.
Ground Screw	Brass (green).
Auto Ground Clip	Stainless Steel.
Dielectric Voltage	Withstands 1500V Minimum.
Max. Working Voltage	277V AC
Overload	Minimum 4.8 times rated current for 100 cycles.

Temp. Rise	30 deg. C maximum at rated current.
Max. Continuous Current	15A
Endurance	50,000 cycles min., tungsten filament lamp load (Fed. Spec) #WS896E.
Terminal Accomodation	#14 AWG min.- #10 AWG max.
Flammibility	UL 94 V2.
Operating Temperature	Maximum continuous 75 deg. C- Minimum -40 dec. C (w/o impact).
UL Certification	UL Listed, File E1464, Guide #WMUZ.
Federal Specification	Verified under Fed. Spec. #WS896E.
Standards	Complies with UL 20 and NEMA WD-1.
Catalog Page	Click here for catalog page
UPC Number	78178662349
Weight in LBs	0.1



BRYANT®