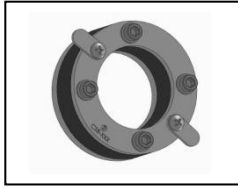


CSB-200 through CSB-400 Installation Instructions



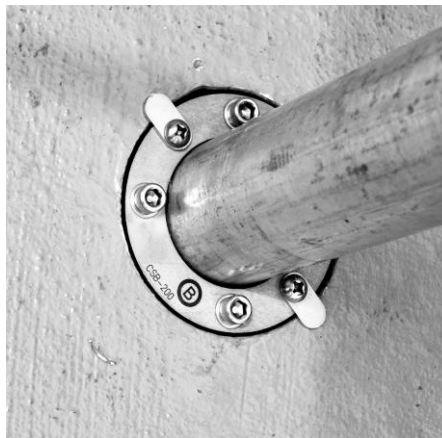
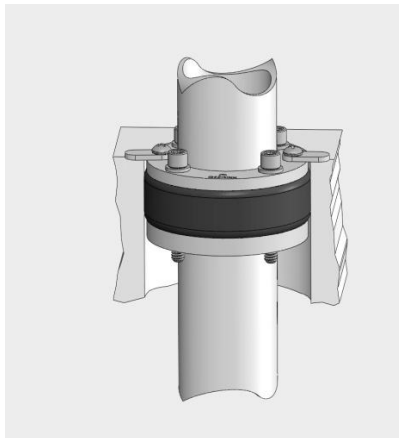
Bridgeport Fittings Conduit Sealing Bushing (CSB) product line: CSB-200 through CSB-400 are designed to provide a corrosion resistant, watertight seal between Rigid Metallic Conduit and core drilled holes or penetrations in concrete foundations walls and floors.



Product	Diameter of core, or penetration
CSB-200	4 inch diameter cored concrete hole
CSB-250 CSB-300	5 inch diameter cored concrete hole
CSB-350 CSB-400	6 inch diameter cored concrete hole

Installation Instructions

1. Core drill concrete to dimension listed above.
2. Clean concrete surface along the entire length of the core. Concrete surface sealer may be necessary in aged or porous concrete.
3. Feed conduit through hole and slide CSB over the conduit until it rests firmly on the surface of the concrete. The stainless steel tabs are designed to keep the CSB level with the surface of the concrete during the installation process.
4. Incrementally tighten 5/16 stainless steel cap screws to a minimum of 100 inch lbs. by alternating the tightening sequence to insure that the CSB is not canted, or off-center. After the tightening sequence is complete, inspect the gap between the top plate and conduit. The gap should be even and consistent surrounding the conduit.
5. Swing tabs can be removed and grounding lugs can be installed using the ¼-20 tapped hole provided.



Specifications

Face plate, back plate, tabs, screws and washers - 304 Stainless Steel

Grommet-Duro 60 Neoprene rubber

Factory tested and **certified** to exceed 40 ft. of hydraulic pressure or 20 psi

Note: CSB should not be used in lieu of any NEC required support.